 **JLL** SEE A BRIGHTER WAY

For sublease

24 Hartwell Avenue

Lexington, MA

Office Suite

±12,788 SF Available

Property Overview

JLL is pleased to present a ±12,788 SF office sublease opportunity at 24 Hartwell Avenue in Lexington, MA. The property is located just 2 minutes from I-95, and 3 minutes from Route 3, allowing for easy access. The suite offers an open-concept office layout, while still providing a variety of private conference and office rooms, maximizing flexibility for tenants.



Leasing Details

Term: Thru April 30th, 2026

Available: Immediately

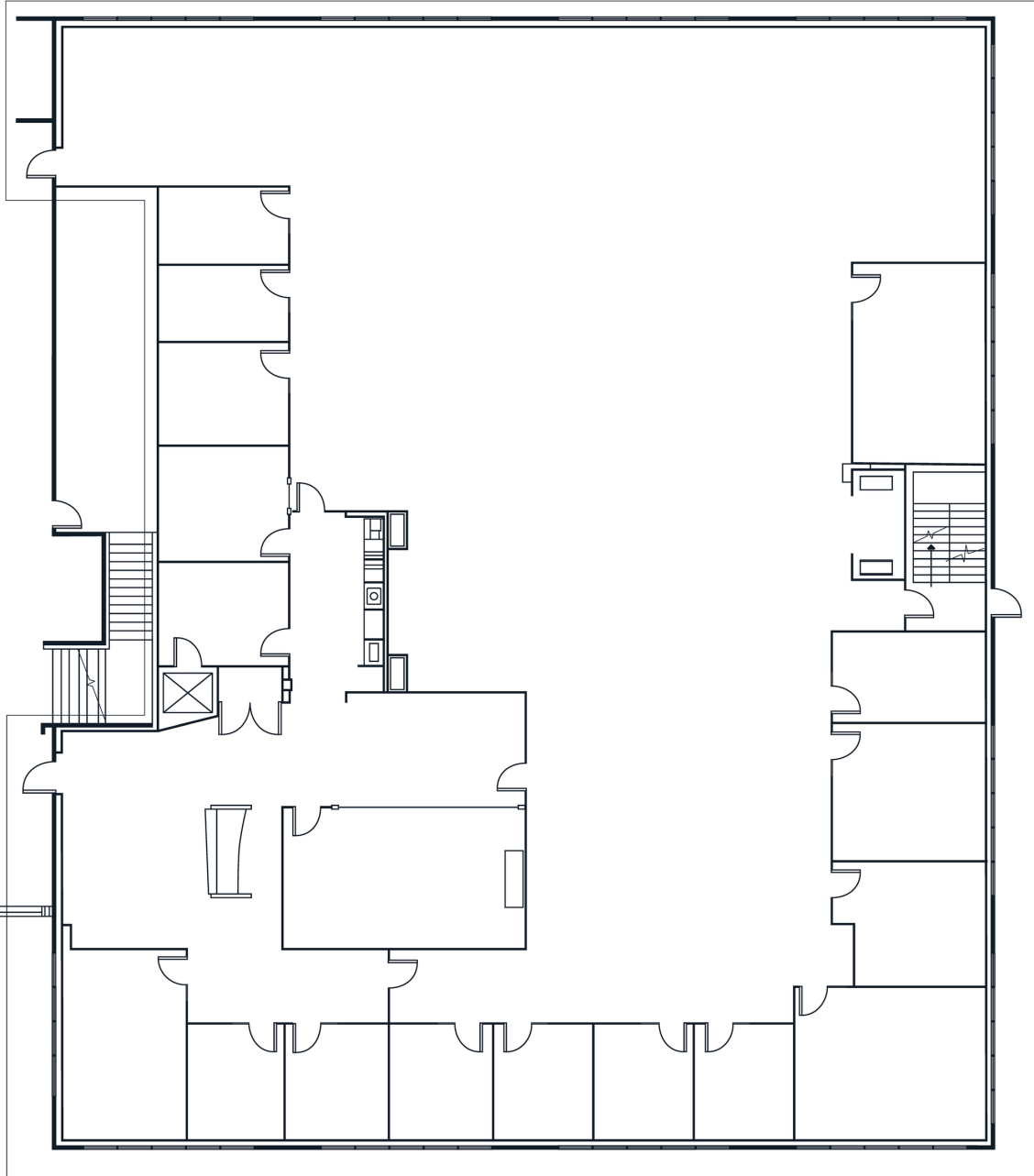
Details

Building Size	±129,200 SF
Available Suite	±12,788 SF
Floor	1
Term	Through 4/30/2026
Parking Ratio	3.50/1,000 SF

Amenity Highlights

- Kitchenette in Suite
- Fitness Center
- Food Court
- New Cafeteria & Lobby
- Outdoor Patio Seating
- Shuttle to Alewife

Floorplan



10

Private Offices



3

Large Conference
Rooms



2

Huddle Rooms



2

Phone Rooms

Highway Access



Jamey Lipscomb
Managing Director
James.Lipscomb@jll.com
+1 617 833 3777

jll.com

Hannah Kiernan
Associate
Hannah.Kiernan@jll.com
+1 617 531 4124