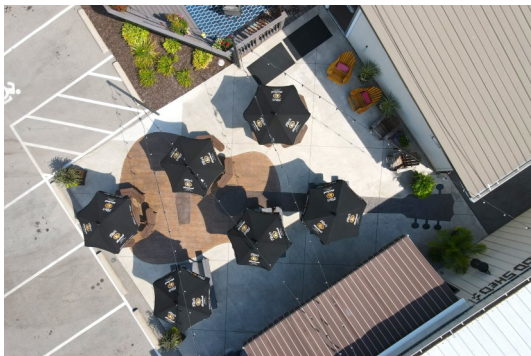


Rocky & Tara's Nut Haus

Outdoor Patio & Deck Seating

Rocky & Tara's Nut House boasts one of the coolest patios in Northeast Wisconsin! Their signature "Guitar Patio" features a guitar drawn into the patio concrete with outdoor plants and flowers and music themed décor setting the tone. Patrons can still enjoy the live music from the Outdoor Pavilion Bar while relaxing in the open atmosphere. Fully lit with overhead string lights and furnished with picnic tables and umbrellas this patio just can't be beat!



...Nestled between the main bar and the pavilion bar the "Guitar Patio" offers the perfect spot to gather with friends and enjoy an afternoon or evening chatting and listening to great music!

Just off the main bar is a deck that will definitely relax customers after a hard day of work!



The couches, firepit table and relaxing atmosphere puts patrons at ease and in a fully relaxed state! From perfect sunny afternoons, to early evenings and later nights, this deck is just perfect to enjoy all!