



550

WASHINGTON

exclusively leased by

BA BRADFORD
ALLEN

550 W. WASHINGTON BOULEVARD, CHICAGO, IL



550
WASHINGTON

REINTRODUCING 550 W. WASHINGTON

550 W. Washington, now under new debt-free ownership, is a premier commercial property in Chicago's West Loop, **offering modern, customizable office space with high ceilings, only 6 columns per floor, and ample natural light.** The building has controlled access with lobby turnstiles, manned security, and the ability to lock elevators off. Tenants enjoy existing amenities of on-site parking, fitness center, conference facility, and bike storage, with exciting additions coming soon. Conveniently located near the Kennedy Expressway, Ogilvie, and Union Station, it provides excellent accessibility. Large block of contiguous space available with signage opportunities, including naming rights, with a minimum SF lease.

BUILDING CLASS: A

LISTING SIZE: 372,597 SF

YEAR BUILT: 2000

YEARS RENOVATED: 2018 and 2025

STORIES: 16

TYPICAL FLOOR SIZE: 24,000 SF

ELEVATORS: 8



BA BRADFORD
ALLEN



550
WASHINGTON

A DESIRABLE DESTINATION FOR BUSINESSES



A refreshed fitness center, an expanded conference area, and the addition of a tenant lounge that can be combined with the conference area to accommodate larger gatherings will further elevate the workspace experience.

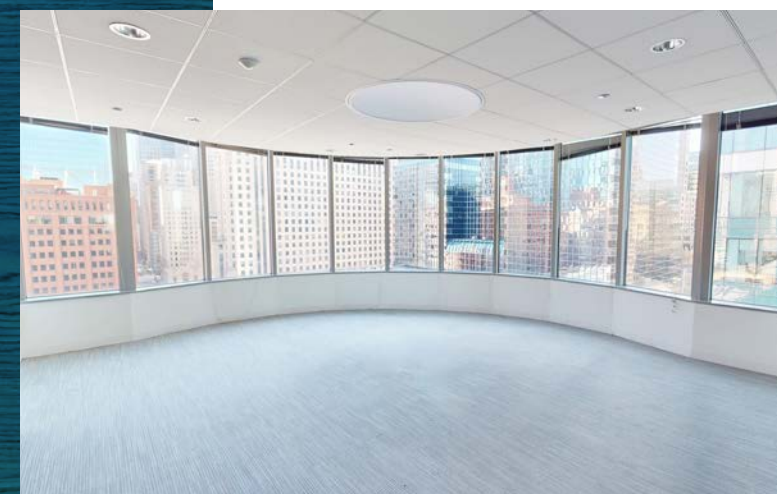
550
WASHINGTON

MODERN, VERSATILE
SPACES WITH HIGH
CEILINGS AND
CUSTOMIZABLE LAYOUTS



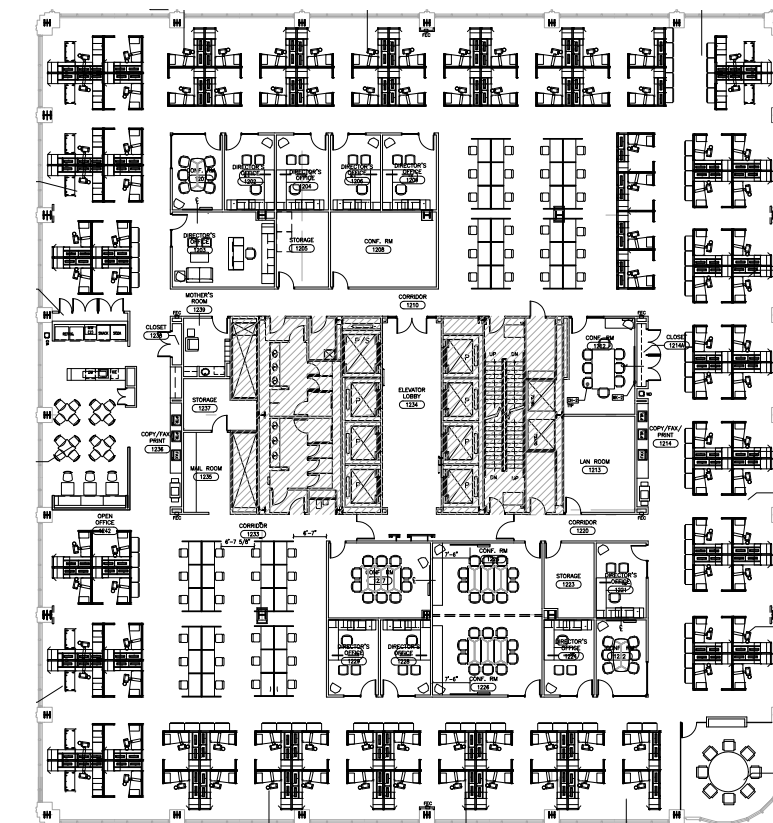
SUITE 1100

24,548 SF



SUITE 1200

24,548 SF





LOOP

PROXIMITY

550 W. Washington **offers prime access to both Chicago's Loop and Fulton Market**, with proximity to Ogilvie and Union Station for easy commuting. It's near CTA options, major highways, corporate hubs, and top dining in the West Loop. Ideal for business networking, client meetings, and enjoying the city's vibrant amenities.

550
WASHINGTON

550
WASHINGTON

BA
BRADFORD
ALLEN

550

WASHINGTON

WALKING DISTANCE TO TRANSPORTATION:

- CLINTON CTA STATION: 4 MIN
- WASHINGTON & WELLS CTA STATION: 9 MIN
- OGILVIE TRAIN STATION: 3 MIN
- UNION STATION: 8 MIN
- CTA BUS LINES 20, 56, 60, 124, 125, 157: WITHIN 1 BLOCK

DRIVING DISTANCE TO EXPRESSWAYS:

- KENNEDY EXPRESSWAY I-90/94: .5 MI
- EISENHOWER EXPRESSWAY I-290: 1 MI
- LAKE SHORE DRIVE US 41: 1.5 MI



550

WASHINGTON

exclusively leased by

BA BRADFORD
ALLEN

FOR MORE INFORMATION
OR TO ARRANGE A TOUR,
PLEASE CONTACT:

ANDY DEMOSS

312 994 5767

ademoss@bradfordallen.com

ALEX GORDON

312 994 5663

agordon@bradfordallen.com