



CLASS A INDUSTRIAL SPACE FOR LEASE

## Northlake Distribution Center

11830 N. Lakeridge Pkwy, Ashland, VA



### Contact Us:

#### HARRISON MCVEY, SIOR

VICE PRESIDENT

Mobile: 804.512.3243

[hmcvey@rangecommercial.com](mailto:hmcvey@rangecommercial.com)

#### MATT ANDERSON, SIOR

EXECUTIVE VICE PRESIDENT

Mobile: 804.240.8833

[manderson@rangecommercial.com](mailto:manderson@rangecommercial.com)

#### Range Commercial Partners

7200 Glen Forest Drive, Suite 100

Richmond, VA 23226

804.796.0500

[rangecommercial.com](http://rangecommercial.com)

### PROPERTY DETAILS

- 16,138 SF available
- 3 loading docks
- 32' clear
- 1,508 SF of existing office
- 300 amp, 480 volt, 3-phase electrical service
- 1 mile from I-95/Lewistown Rd (exit #89)

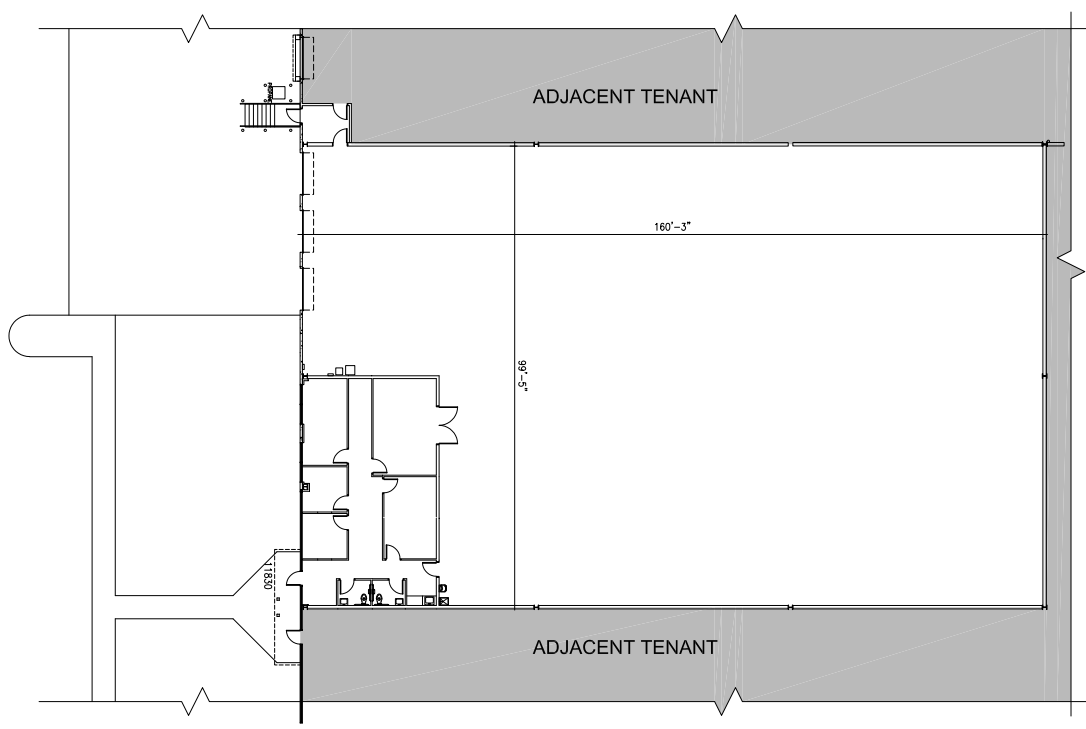
#### *Under new Ownership with Improvements Complete*

- New roof and paint
- Upgrade to parking and loading areas

Copyright © 2025 Range Commercial Partners. Information herein has been obtained from sources deemed reliable, however its accuracy cannot be guaranteed. This user is required to conduct their own due diligence and verification.

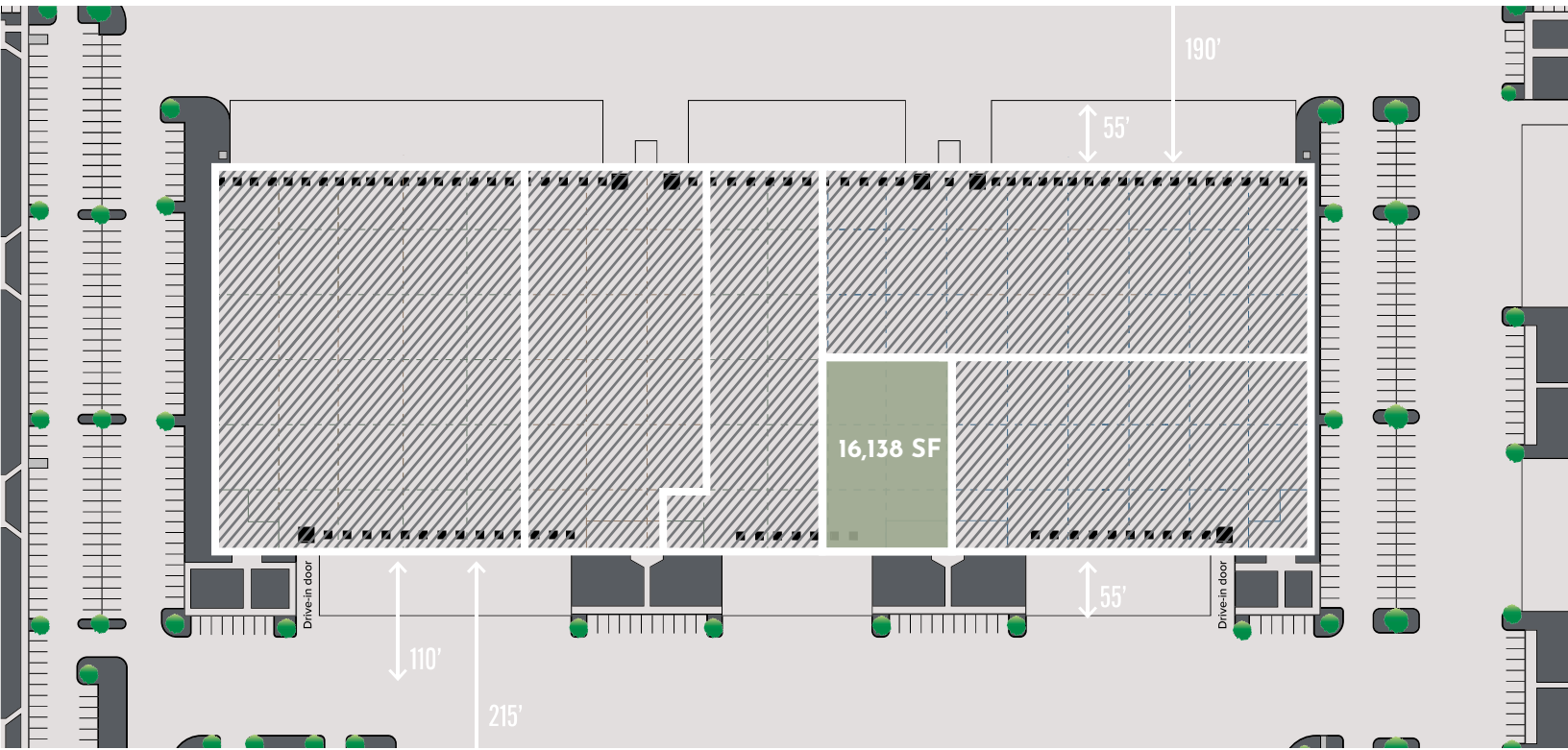
FOR LEASE | NORTHLAKE DISTRIBUTION CENTER

# FLOOR PLAN & AERIAL VIEW

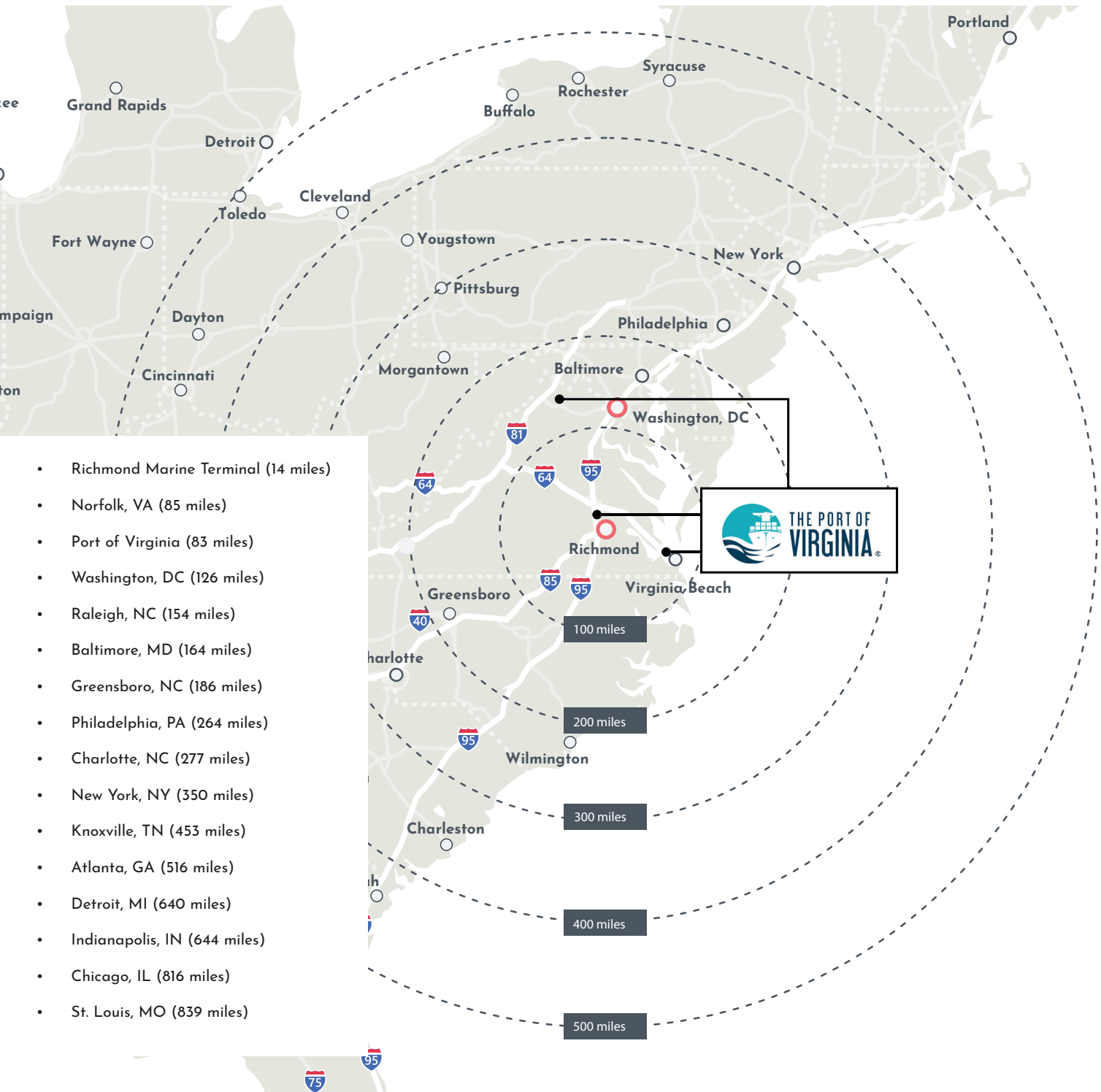


FOR LEASE | NORTHLAKE DISTRIBUTION CENTER

## FLOOR PLAN & AERIAL VIEW



## FOR LEASE | NORTHLAKE DISTRIBUTION CENTER



### Contact Us:

**HARRISON MCVEY, SIOR**

VICE PRESIDENT

Mobile: 804.512.3243

hmcvey@rangecommercial.com

**MATT ANDERSON, SIOR**

EXECUTIVE VICE PRESIDENT

Mobile: 804.240.8833

manderson@rangecommercial.com

**RANGECOMMERCIAL.COM**

