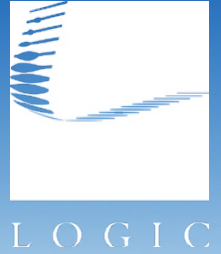


For Lease

# Cosair St. & Longley Ln.



[Click for a Virtual Tour](#) 

4655 Longley Ln.  
Suite 106  
Reno, NV 89502

**Michael Keating, SIOR**  
Partner  
775.386.9727  
mkeating@logicCRE.com  
S.0174942

**Michael Dorn**  
Vice President  
775.453.4436  
mdorn@logicCRE.com  
S.0189635

# Listing Snapshot



**\$1.20 PSF/Mo.**  
Lease Rate



**\$0.25 PSF NNN**  
Estimated NNN Expense



**± 10,402 SF**  
Available Square Footage



**021-860-01**  
Parcel Number (APN)

## Property Highlights

- ± 10,402 SF total flex space | ± 5,172 SF warehouse & ± 5,230 SF office
- Turnkey office build-out with five (5) private offices, reception, breakroom, two (2) restrooms & server room
- Conditioned lab/assembly area ideal for light manufacturing, R&D, or technical operations
- 400 AMP 120/208V, 3-phase power | one (1) grade-level door | 17' clear height
- Located in the heart of Reno's Airport Industrial Submarket with IC zoning
- 12'x14' door dimensions

## Demographics

	1-mile	3-mile	5-mile
2025 Population	6,510	71,650	165,232
2025 Average Household Income	\$95,675	\$109,589	\$124,072
2025 Total Households	2,757	30,419	72,407



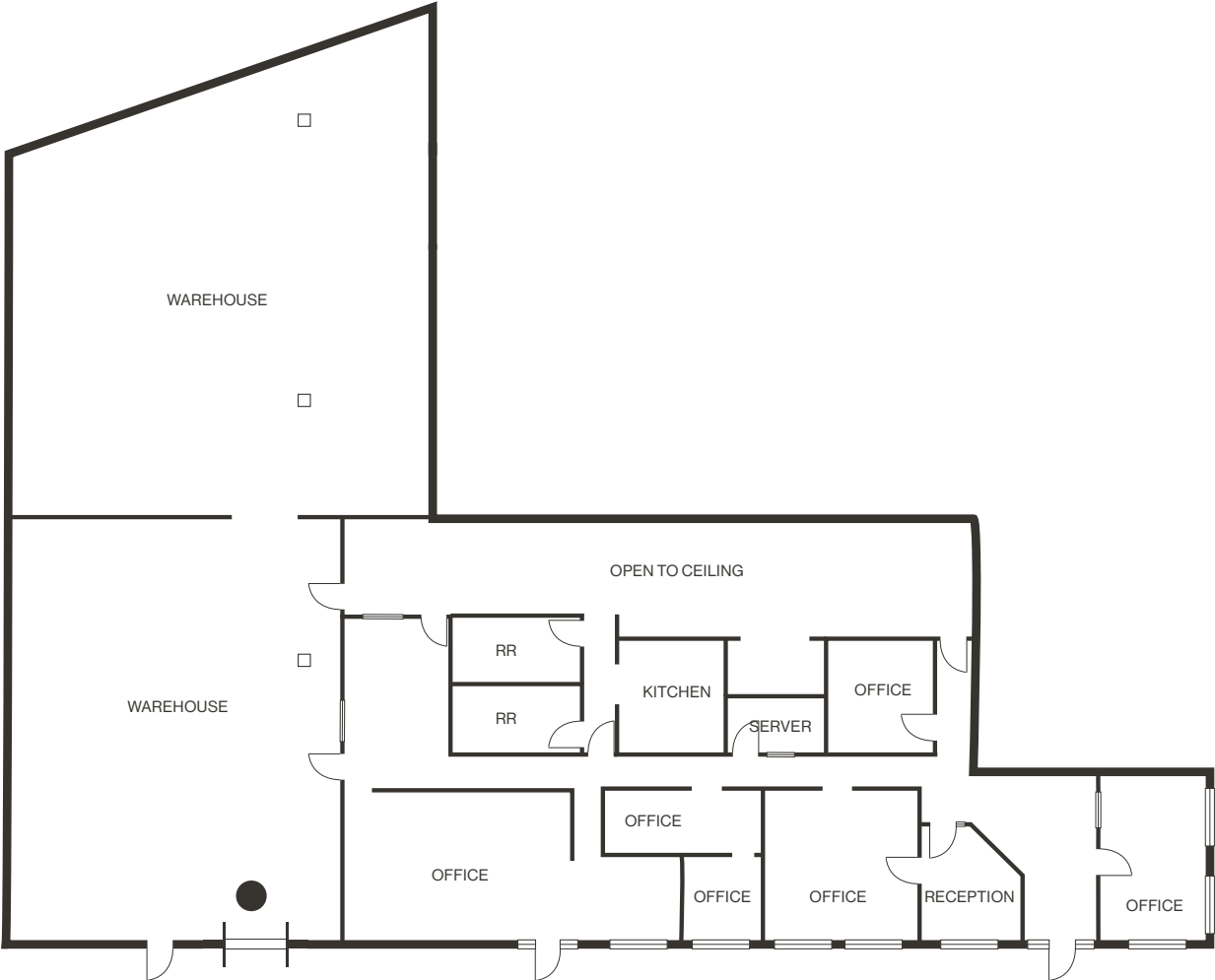


**SUBJECT**  
±10,402 SF

# Floor Plan

● Grade Level Door

[Click for a Virtual Tour](#) 



Property Photos



# LOGIC Commercial Real Estate

## Specializing in Brokerage and Receivership Services



Join our email list and  
connect with us on LinkedIn

The information herein was obtained from sources deemed reliable; however LOGIC Commercial Real Estate makes no guarantees, warranties or representation as to the completeness or accuracy thereof.

For inquiries please reach out to our team.

**Michael Keating, SIOR**  
Partner  
775.386.9727  
mkeating@logicCRE.com  
S.0174942

**Michael Dorn**  
Vice President  
775.453.4436  
mdorn@logicCRE.com  
S.0189635