




For Sublease

Oakbrook Center- East Tower

11770 US Highway 1

Palm Beach Gardens, FL 33408

 **JLL** SEE A BRIGHTER WAY

For Sublease



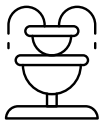
Suite Partial 3rd Floor & 603

Size (Divisible) Partial 3rd Floor- 7,100 RSF
Suite 603- 3,773 RSF

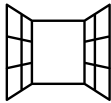
Asking Rate \$47.00 /SF Gross

Available Now

Expiration 2/28/30



Lush courtyard with serene fountains



Floor to ceiling windows



Flexible workspace



Intracoastal views from the 6th floor



Near luxury communities, retail, and entertainment



Partial 3rd Floor

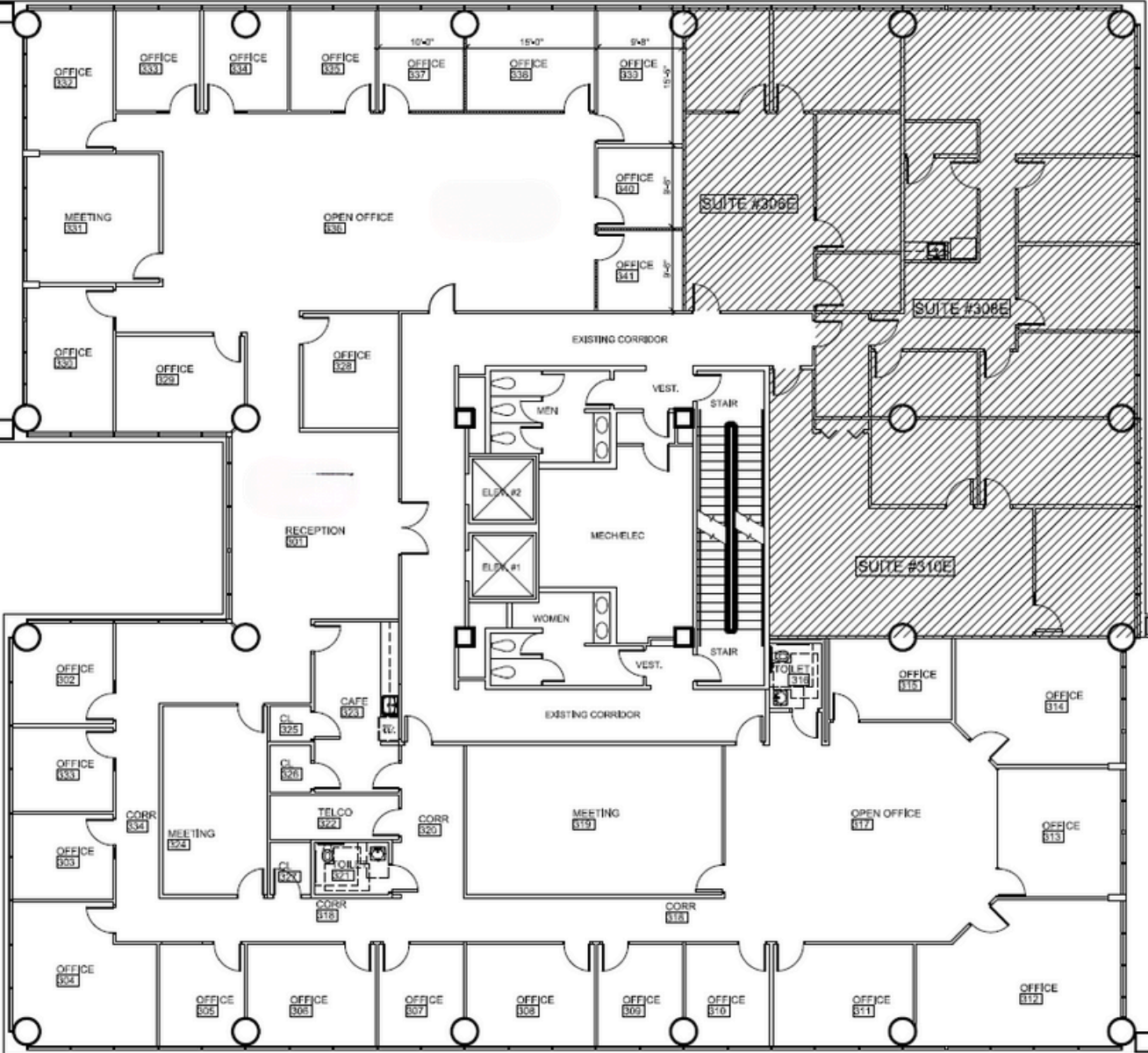
Photos



Suite 603

Photos

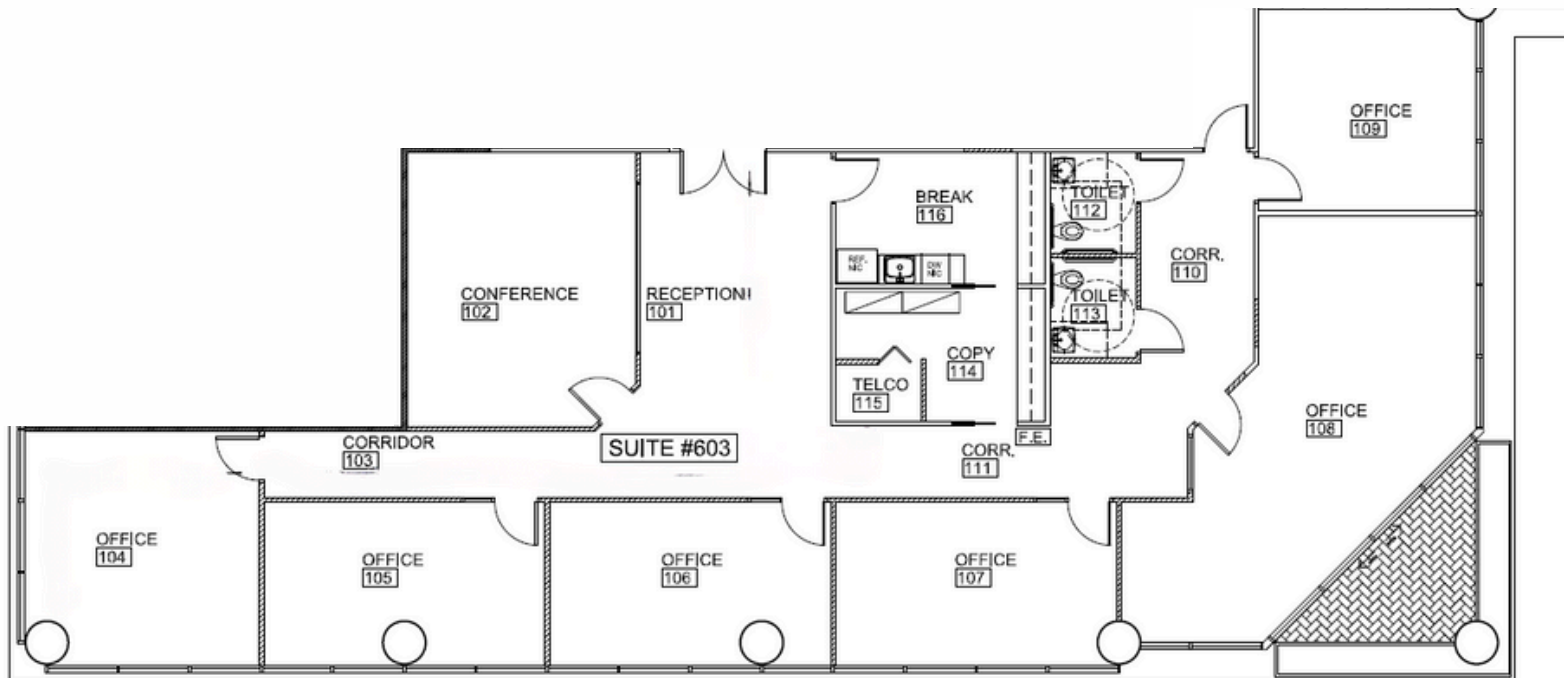




Kevin McCarthy
Senior Managing Director
kevin.mccarthy@jll.com
+1 561 292 2668

Kevin Probel
Senior Managing Director
kevin.probel@jll.com
+1 561 676 2131

6th Floor Plan



For more information please contact:

Kevin McCarthy
Senior Managing Director
kevin.mccarthy@jll.com
+1 561 292 2668

Kevin Probel
Senior Managing Director
kevin.probel@jll.com
+1 561 676 2131