

FOR SALE

Office | Lab | Manufacturing



1405 Mill Race Drive
Salem, VA

5,280 SF | .52 AC

\$670,000

This prime office | manufacturing | lab building is located in the Commonwealth Business Park off Mill Lane in Salem. The building is a combination of extremely well appointed office space (4 private offices, conference room and modular cube area) with lab | manufacturing space served by a dock height door for deliveries and shipping. Lab | Production area has 4 offices and large 'analytical' room that could be additional conference room. In addition the lab | production area has existing water lines and drains. Rear overhead door in addition to the dock height door. Two 200 amp panel boxes.

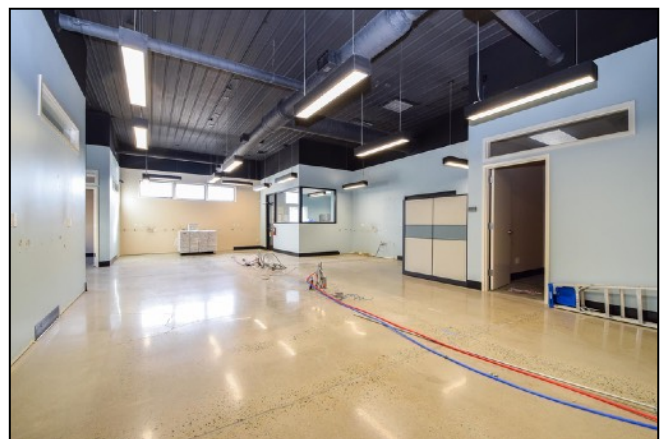
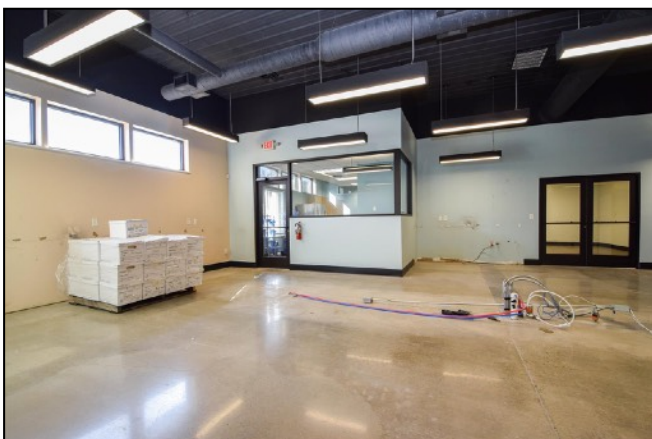
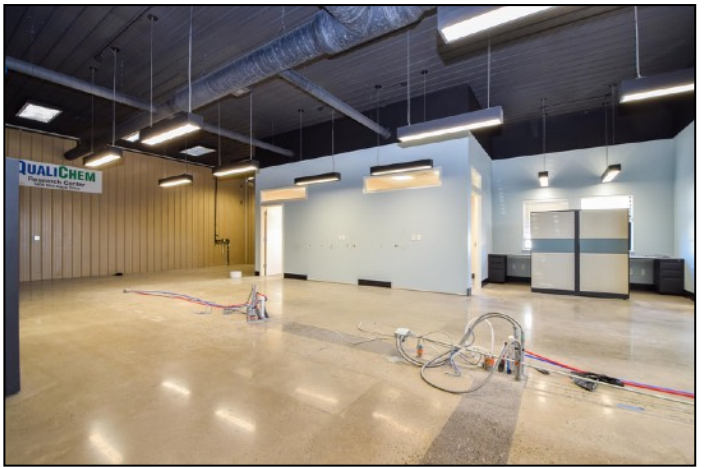


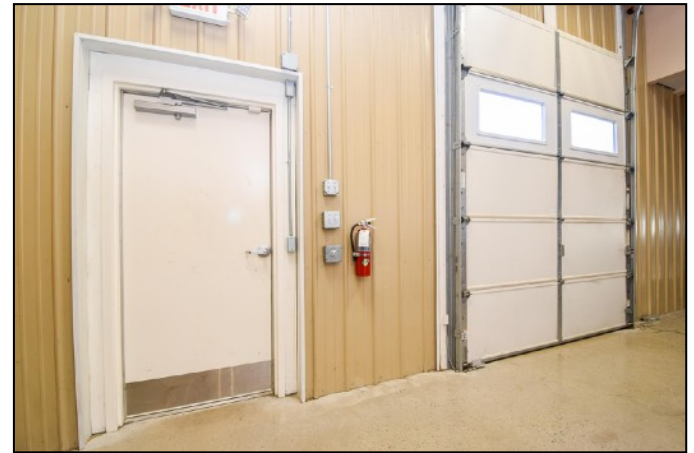
Henry Scholz
Cell: 540.353.0100
HScholz@mkbrealtors.com

Jason Varney
Cell: 540.793.4384
varneys1@cox.net

MKB, REALTORS
3801 Electric Road
Roanoke, Virginia 24018
Office: 540.989.4556
Licensed in the Commonwealth of Virginia
MKBcommercial.com





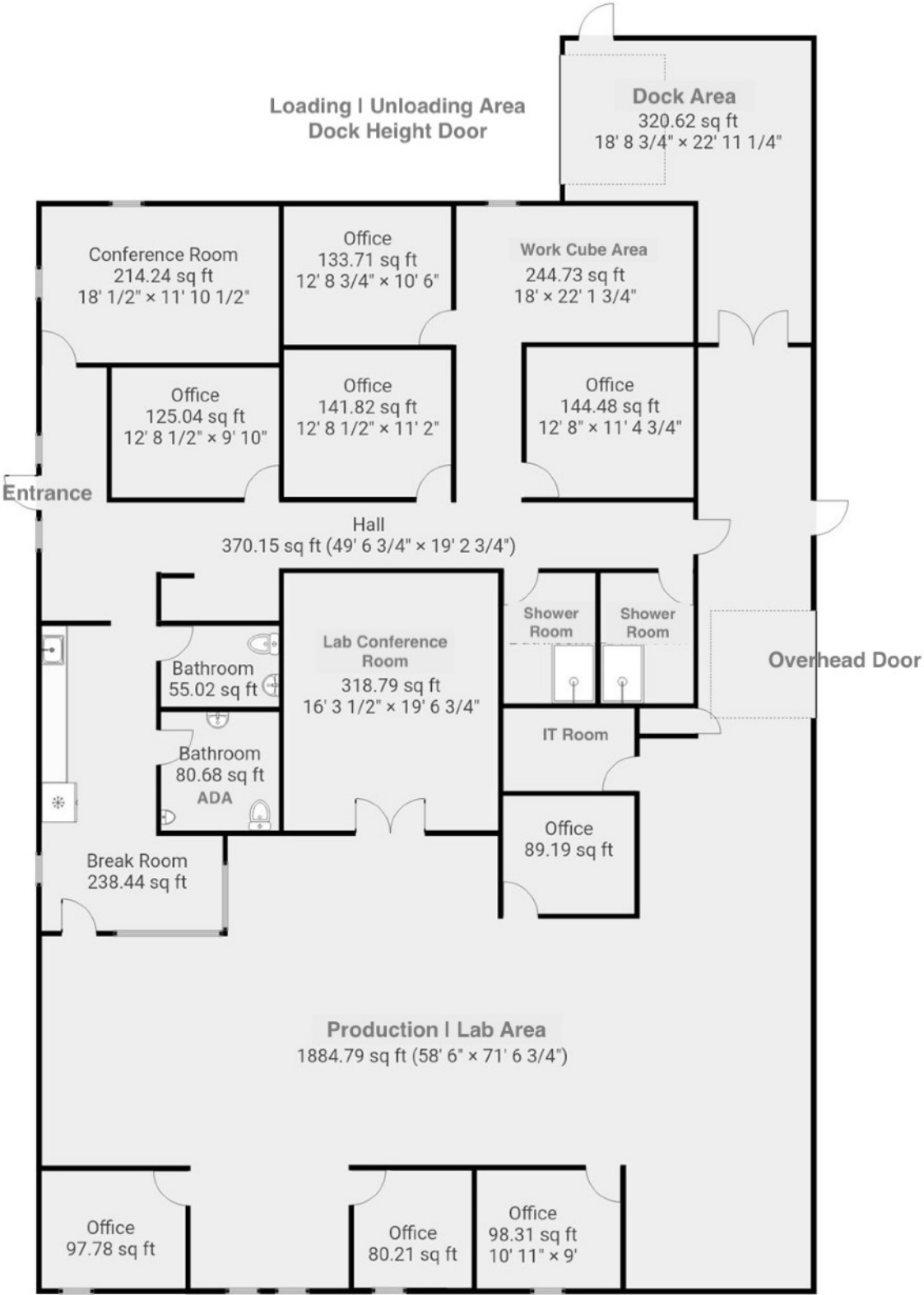


The BCD (Business Commerce District) zoning district encompasses a wide variety of uses and is for establishments engaged in the processing, manufacturing, compounding, assembly, packaging, treatment or fabrication of materials and products, from processed or previously manufactured materials.

Take the Virtual Tour with the link below

[VIRTUAL TOUR CLICK HERE](#)

Building Layout



THIS FLOORPLAN IS PROVIDED WITHOUT WARRANTY OF ANY KIND. SENSOPIA DISCLAIMS ANY WARRANTY INCLUDING, WITHOUT LIMITATION, SATISFACTORY QUALITY OR ACCURACY OF DIMENSIONS.