

**±1820 SF OFFICE PROPERTY FOR SALE**

**716**  
**19TH STREET**

SACRAMENTO, CA



**CBRE**



# PROPERTY FEATURES

Building Size	± 1,820 SF
Year Built	1962
Parking	8 stalls
Zoning	EC-40-PUD
Construction	Steel
HVAC	2 Packaged Units & Heat Pump



## HIGHLIGHTS



“Bite Sized” Opportunity



8 onsite, secured parking stalls



Freeway access to I-5 and I-80



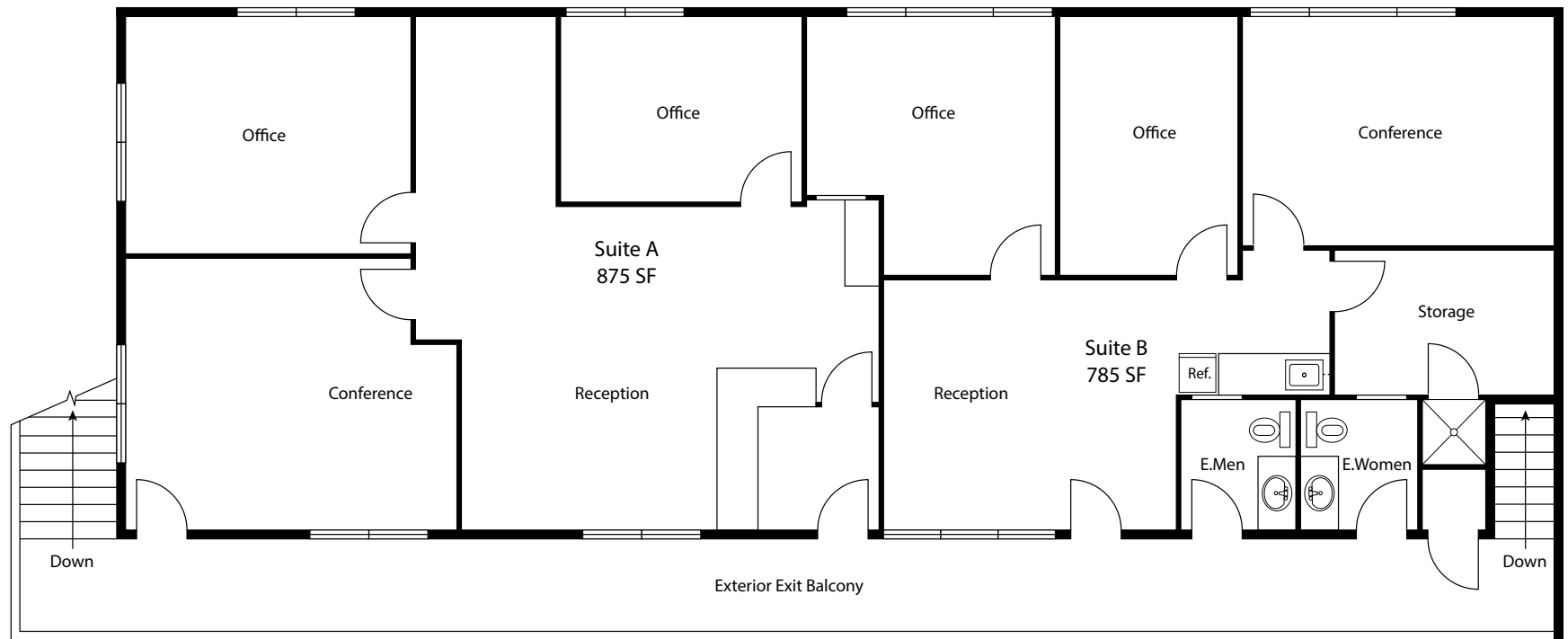
Central Midtown Location



Adjacent to Downtown Sacramento



Close proximity to restaurants, retail and professional amenities









716  
19TH STREET  
SACRAMENTO, CA

**TONY WHITTAKER**

Senior Vice President

+1 916 492 6914

[tony.whittaker@cbre.com](mailto:tony.whittaker@cbre.com)

Lic. 01780828

© 2025 CBRE, Inc. All rights reserved. This information has been obtained from sources believed reliable but has not been verified for accuracy or completeness. You should conduct a careful, independent investigation of the property and verify all information. Any reliance on this information is solely at your own risk. CBRE and the CBRE logo are service marks of CBRE, Inc. All other marks displayed on this document are the property of their respective owners, and the use of such logos does not imply any affiliation with or endorsement of CBRE. Photos herein are the property of their respective owners. Use of these images without the express written consent of the owner is prohibited. CMPM 716 19th Street\_BRO.Whittaker\_v02 09/02/25

**CBRE**