

331 N. Beverly Drive

Beverly Hills, CA 90210

OFFICE SUITES AVAILABLE IN THE
BEVERLY HILLS GOLDEN TRIANGLE (NEXT TO EREWHON)



COMMERCIAL
ASSET GROUP

ADAM FUNK
MANAGING DIRECTOR
310.666.0124
AFUNK@CAGRE.COM
LIC. 02129715

PROPERTY HIGHLIGHTS

RENTAL RATE

SUITE 8: \$1,985/MO

TERM

NEGOTIABLE

AVAILABILITY

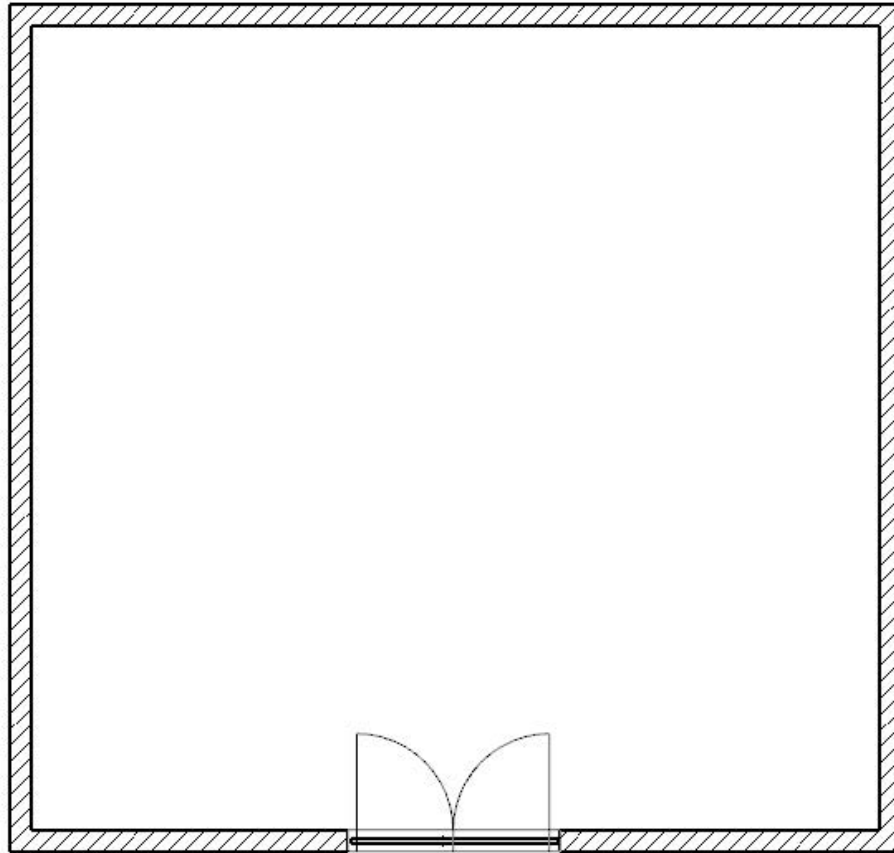
SUITE 8: IMMEDIATELY

PARKING

CITY LOT NEXT DOOR



SUITE 8



AERIAL





ADAM FUNK
MANAGING DIRECTOR
310.666.0124
AFUNK@CAGRE.COM
LIC. 02129715

COMMERCIAL ASSET GROUP
190 N. CANON DRIVE, STE 300
BEVERLY HILLS, CA 90210
P: 310.275.8222 F: 310.275.8223
CAGRE.COM LIC: 01876070



**COMMERCIAL
ASSET GROUP**

These materials are based on information and content provided by others, which we believe are accurate. No guarantee, warranty or representation is made by Commercial Asset Group, Inc. or its personnel. All interested parties must independently verify accuracy and completeness. As well, any projections, assumptions, opinion, or estimates are used for example only and do not represent the current or future performance of the identified property. Your tax, financial, legal and toxic substance advisors should conduct a careful investigation of the property and its suitability for your needs, including land use limitations. The property is subject to prior lease, sale, change in price, or withdrawal from the market without notice.