

Suburban Studio Apartments

2595 Georgetown Rd.

Cleveland, TN, 37311



This 102-unit property is located on the main exit from I-75 to downtown Cleveland Tennessee.

A total remodeling of 49 units with kitchenettes has just been fully completed.

All new furniture, beds, kitchen appliances, sinks,
49 of the units include Kitchenettes.

52 units are complete except for the kitchenettes.

Priced at \$5,250,000 (Cash at Closing \$4,500,000)



Property Details:

Building One –

- Lobby and offices
- Full-Service Restaurant - Seats 90
- Full-Service Commercial Kitchen
- Two Meeting Rooms on second floor with Service Bar
- Restaurant is Leased at \$96,000/per year including utility payments by lessee.

Building Two –

- 40 units are 12 X 25
- 10 units are 12 X 20
- Plus, one three-room apartment (52 total)
- All new electrical outlets, switches and LED lighting
- Second floor includes two – two-room apartments
- Upstairs apartments have a back door

Building Three –

- 49 all newly renovated units
- ALL ROOMS ARE KITCHETTES
- 9 units are 12 X 20 with connector doors
- 38 units are 12 X 25
- Plus, one unit is an up and downstairs apartment
- Plus, one unit is a vending/laundry room
- All new electrical outlets, switches and LED lighting

Other Building Details:

- Built in 1969 and **totally renovated in 2023**
- Masonry – non-combustible
- Roof is TPO replaced 2019 Building 2 and 3
- Roof is metal replaced 2019 on Building 1
- Property sits on 2.8 level acres
- Zoned commercial









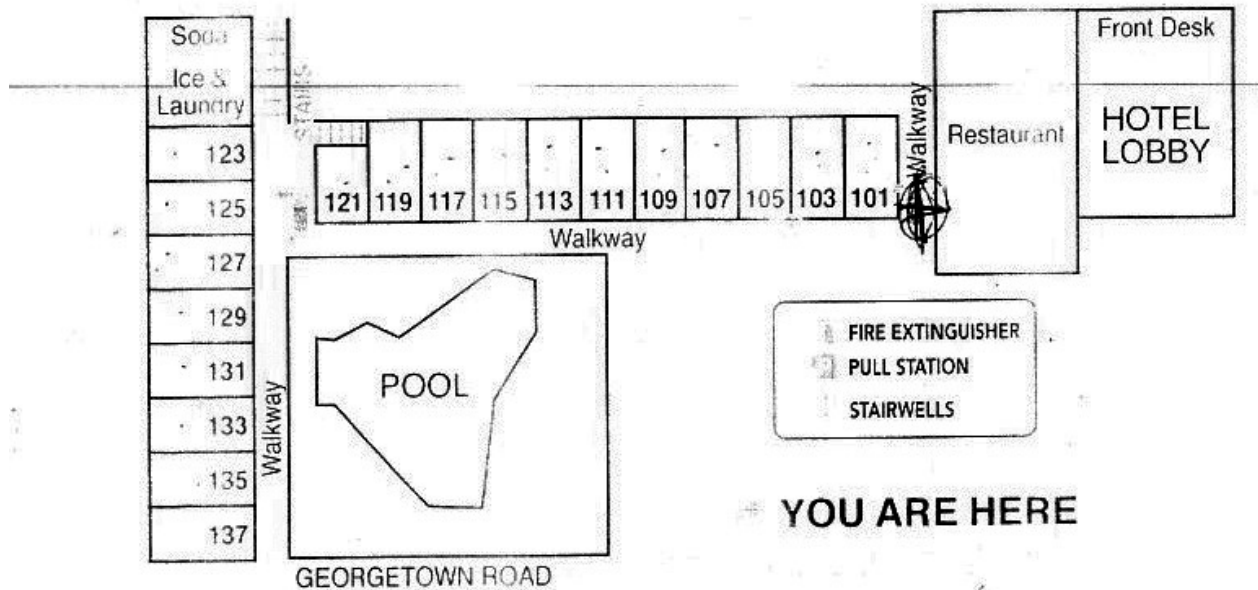








FIRST FLOOR



FOR FIRE *INSIDE* YOUR ROOM:

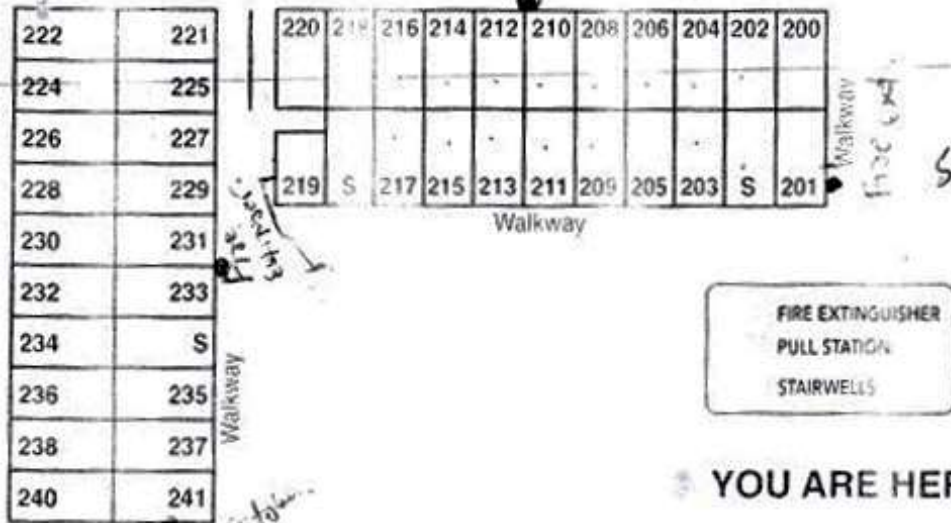
- A. CALL THE FIRE DEPARTMENT
 1. Tell them your exact location.
 2. Explain what is burning.
- B. CALL THE HOTEL OPERATOR
- C. ALERT OTHERS in the area and ACTIVATE FIRE ALARMS.
- D. WALK (do not run) TO NEAREST STAIRWELL EXIT.

Western Hotel Supply • Aberdeen, SD • 1-800-645-3856

FOR FIRE *OUTSIDE* YOUR ROOM:

- A. FEEL THE DOOR. IF HOT, DO NOT OPEN.
 1. CALL FIRE DEPARTMENT and hotel operator.
 2. Wedge damp towel along bottom of door.
 3. Stay near window until help arrives.
- B. IF DOOR IS NOT HOT: Open door cautiously (be ready to close door fast).
- C. WALK (do not run) TO NEAREST STAIRWELL EXIT.
- D. TAKE YOUR ROOM KEY/CARD.

SECOND FLOOR



FOR FIRE *INSIDE* YOUR ROOM:

A. CALL THE FIRE DEPARTMENT

1. Tell them your exact location.
2. Explain what is burning.

B. CALL THE HOTEL OPERATOR

C. ALERT OTHERS in the area and ACTIVATE FIRE ALARMS.

D. WALK (do not run) TO NEAREST STAIRWELL EXIT.

Winter Hotel Supply • Aberdeen, SD • 1-800-431-3966

FOR FIRE *OUTSIDE* YOUR ROOM:

A. FEEL THE DOOR. IF HOT, DO NOT OPEN

1. CALL FIRE DEPARTMENT and hotel operator.
2. Wedge damp towel along bottom of door.
3. Stay near window until help arrives.

B. IF DOOR IS NOT HOT: Open door cautiously (be ready to close door fast).

C. WALK (do not run) TO NEAREST STAIRWELL EXIT.

D. TAKE YOUR ROOM KEY/CARD.

THIRD FLOOR

322	323
324	325
326	327
328	329
330	331
332	333
334	335
336	337
338	339
340	341

320	318	316	314	312	310	308	306	304	302	300
321	319	317	315	313	311	309	Board Room			301

Walkway

Walkway

FIRE EXTINGUISHER
PULL STATION
STAIRWELLS

YOU ARE HERE

GEORGETOWN ROAD

FOR FIRE *INSIDE* YOUR ROOM:

- A. CALL THE FIRE DEPARTMENT
 1. Tell them your exact location.
 2. Explain what is burning.
- B. CALL THE HOTEL OPERATOR
- C. ALERT OTHERS in the area and ACTIVATE FIRE ALARMS.
- D. WALK (do not run) TO NEAREST STAIRWELL EXIT.

Union Photo Supply - Allentown, PA • 1-800-645-3856

FOR FIRE *OUTSIDE* YOUR ROOM:

- A. FEEL THE DOOR. IF HOT, DO NOT OPEN.
 1. CALL FIRE DEPARTMENT and hotel operator.
 2. Wedge damp towel along bottom of door.
 3. Stay near window until help arrives.
- B. IF DOOR IS NOT HOT: Open door cautiously (be ready to close door fast).
- C. WALK (do not run) TO NEAREST STAIRWELL EXIT.
- D. TAKE YOUR ROOM KEY/CARD.



Stephen Holmes

steve.holmes@usa.net

(423) 313-0901

RealtyXchange

6505 Lee Hwy

Chattanooga, TN 37421

www.realtyXchange.us

Suburban Studio Apartments

2595 Georgetown Rd.

Cleveland, TN, 37311



This 102-unit property is located on the main exit from I-75 to downtown Cleveland Tennessee.

A total remodeling of 49 units with kitchenettes has just been fully completed.

All new furniture, beds, kitchen appliances, sinks,
49 of the units include Kitchenettes.

52 units are complete except for the kitchenettes.

Priced at \$5,250,000 (Cash at Closing \$4,500,000)



Property Details:

Building One –

- Lobby and offices
- Full-Service Restaurant - Seats 90
- Full-Service Commercial Kitchen
- Two Meeting Rooms on second floor with Service Bar
- Restaurant is Leased at \$96,000/per year including utility payments by lessee.

Building Two –

- 40 units are 12 X 25
- 10 units are 12 X 20
- Plus, one three-room apartment (52 total)
- All new electrical outlets, switches and LED lighting
- Second floor includes two – two-room apartments
- Upstairs apartments have a back door

Building Three –

- 49 all newly renovated units
- ALL ROOMS ARE KITCHETTES
- 9 units are 12 X 20 with connector doors
- 38 units are 12 X 25
- Plus, one unit is an up and downstairs apartment
- Plus, one unit is a vending/laundry room
- All new electrical outlets, switches and LED lighting

Other Building Details:

- Built in 1969 and **totally renovated in 2023**
- Masonry – non-combustible
- Roof is TPO replaced 2019 Building 2 and 3
- Roof is metal replaced 2019 on Building 1
- Property sits on 2.8 level acres
- Zoned commercial









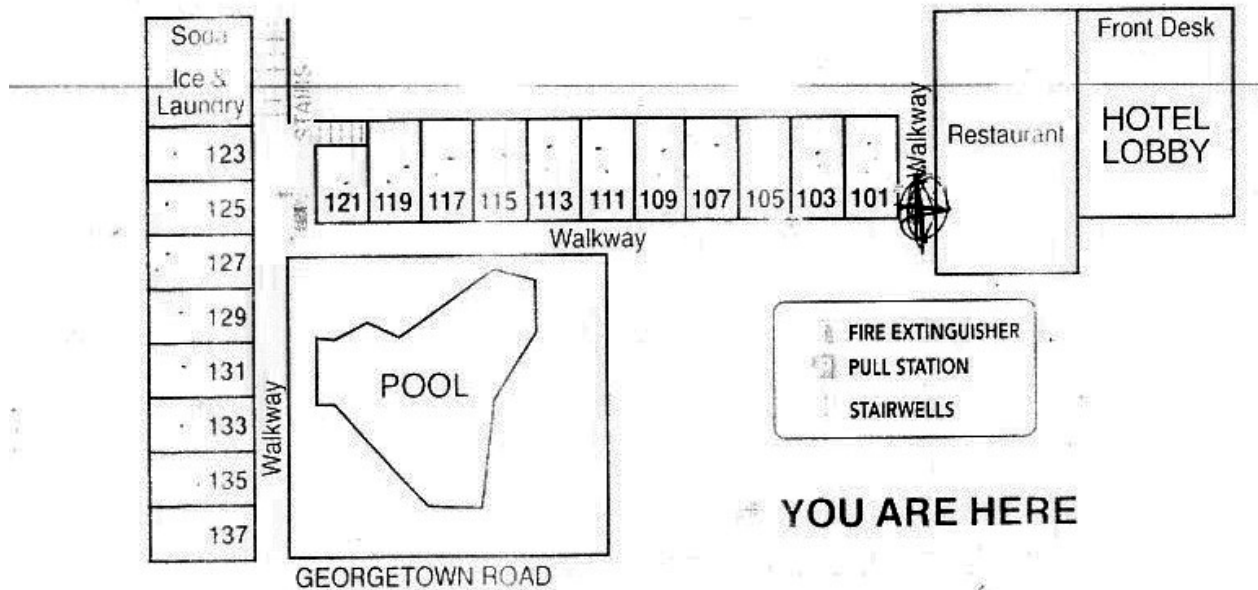








FIRST FLOOR



FOR FIRE *INSIDE* YOUR ROOM:

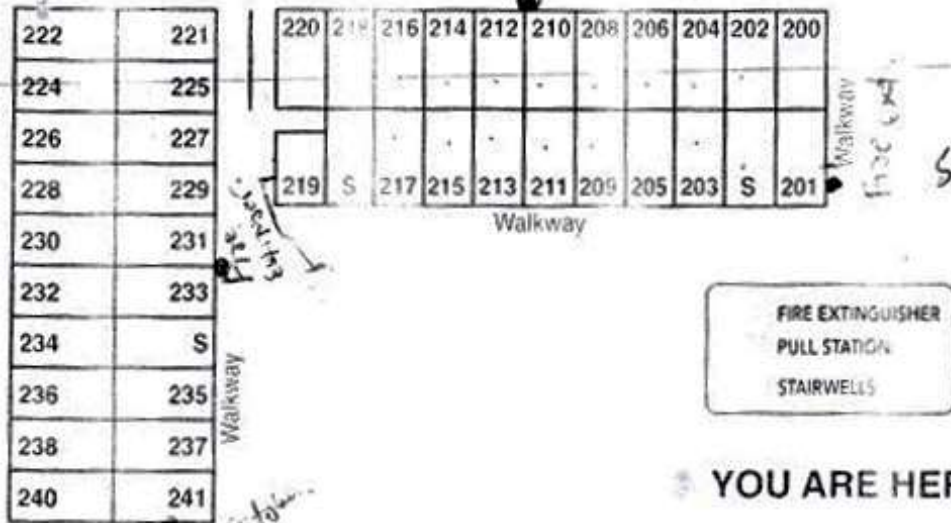
- CALL THE FIRE DEPARTMENT
 - Tell them your exact location.
 - Explain what is burning.
- CALL THE HOTEL OPERATOR
- ALERT OTHERS in the area and ACTIVATE FIRE ALARMS.
- WALK (do not run) TO NEAREST STAIRWELL EXIT.

Western Hotel Supply • Aberdeen, SD • 1-800-645-3856

FOR FIRE *OUTSIDE* YOUR ROOM:

- FEEL THE DOOR. IF HOT, DO NOT OPEN.
 - CALL FIRE DEPARTMENT and hotel operator.
 - Wedge damp towel along bottom of door.
 - Stay near window until help arrives.
- IF DOOR IS NOT HOT: Open door cautiously (be ready to close door fast).
- WALK (do not run) TO NEAREST STAIRWELL EXIT.
- TAKE YOUR ROOM KEY/CARD.

SECOND FLOOR



FOR FIRE *INSIDE* YOUR ROOM:

A. CALL THE FIRE DEPARTMENT

1. Tell them your exact location.
2. Explain what is burning.

B. CALL THE HOTEL OPERATOR

C. ALERT OTHERS in the area and ACTIVATE FIRE ALARMS.

D. WALK (do not run) TO NEAREST STAIRWELL EXIT.

Winter Hotel Supply • Aberdeen, SD • 1-800-431-3966

FOR FIRE *OUTSIDE* YOUR ROOM:

A. FEEL THE DOOR. IF HOT, DO NOT OPEN

1. CALL FIRE DEPARTMENT and hotel operator.
2. Wedge damp towel along bottom of door.
3. Stay near window until help arrives.

B. IF DOOR IS NOT HOT: Open door cautiously (be ready to close door fast).

C. WALK (do not run) TO NEAREST STAIRWELL EXIT.

D. TAKE YOUR ROOM KEY/CARD.

THIRD FLOOR

322	323
324	325
326	327
328	329
330	331
332	333
334	335
336	337
338	339
340	341

320	318	316	314	312	310	308	306	304	302	300
321	319	317	315	313	311	309	Board Room			301

Walkway

Walkway

FIRE EXTINGUISHER
PULL STATION
STAIRWELLS

YOU ARE HERE

GEORGETOWN ROAD

FOR FIRE *INSIDE* YOUR ROOM:

- A. CALL THE FIRE DEPARTMENT
 1. Tell them your exact location.
 2. Explain what is burning.
- B. CALL THE HOTEL OPERATOR
- C. ALERT OTHERS in the area and ACTIVATE FIRE ALARMS.
- D. WALK (do not run) TO NEAREST STAIRWELL EXIT.

Union Photo Supply - Allentown, PA • 1-800-645-3856

FOR FIRE *OUTSIDE* YOUR ROOM:

- A. FEEL THE DOOR. IF HOT, DO NOT OPEN.
 1. CALL FIRE DEPARTMENT and hotel operator.
 2. Wedge damp towel along bottom of door.
 3. Stay near window until help arrives.
- B. IF DOOR IS NOT HOT: Open door cautiously (be ready to close door fast).
- C. WALK (do not run) TO NEAREST STAIRWELL EXIT.
- D. TAKE YOUR ROOM KEY/CARD.



Stephen Holmes

steve.holmes@usa.net

(423) 313-0901

RealtyXchange

6505 Lee Hwy

Chattanooga, TN 37421

www.realtyXchange.us