

**SUBLEASE AVAILABLE**

# 9 CENTENNIAL DRIVE

Peabody, Massachusetts

OFFICE/FLEX/WAREHOUSE

**21,804 SF Available**



# 9 CENTENNIAL DRIVE

Peabody, Massachusetts



## SUBLEASE PREMISES SPECIFICATIONS

- AVAILABLE SF:** 21,804 SF
- TERM:** Through 10/31/2026
- USE:** Office/Flex/Warehouse
- CLEAR HEIGHT:** 12' - 14'
- LOADING:** Direct Access Tailboard Height
- PARKING:** Ample On-site Parking (>3/1,000 SF)

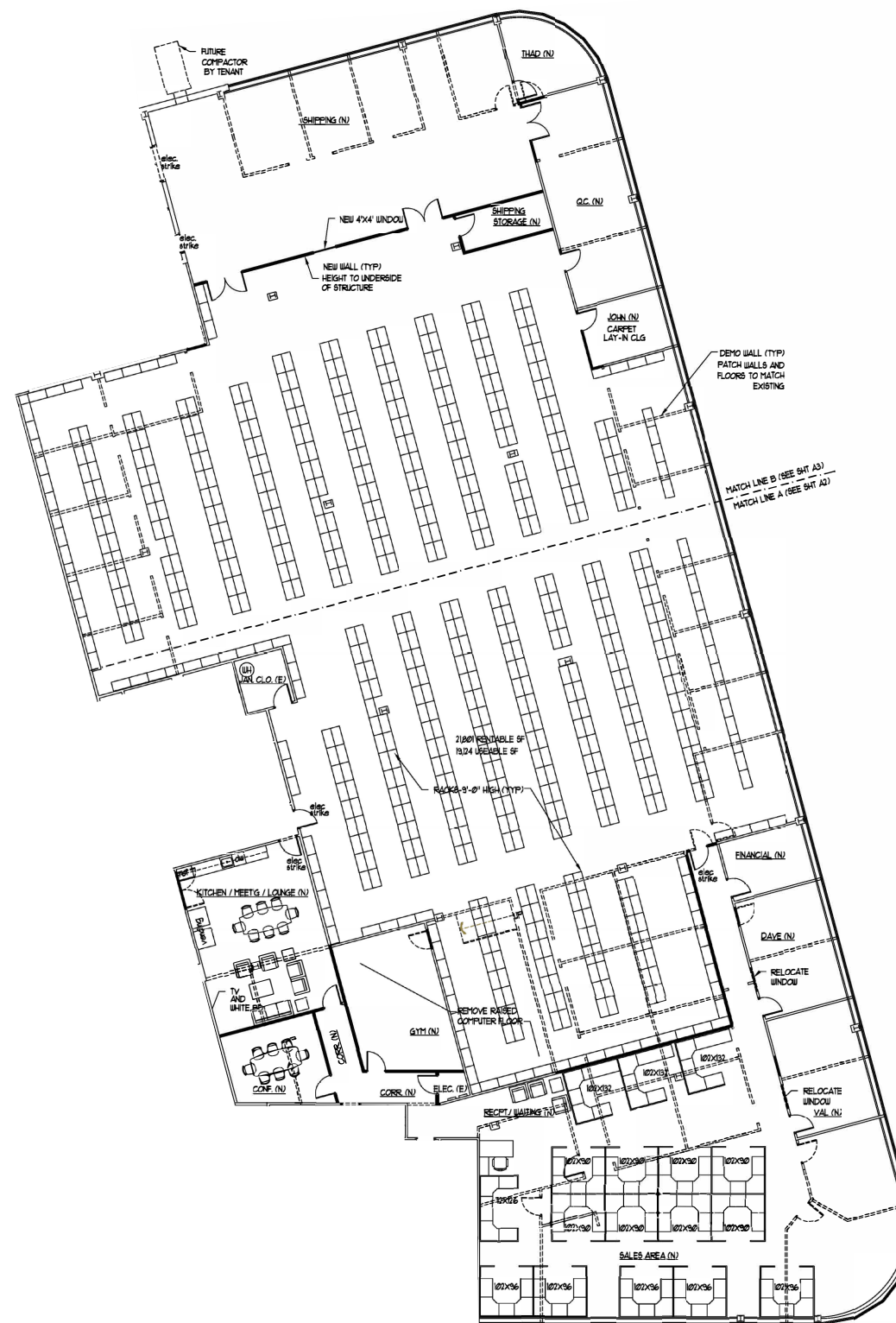


## BUILDING SPECIFICATIONS

- BUILDING SIZE:** 74,801 SF
- TYPE:** Flex/R&D
- LAND:** 5.13 Acres
- HVAC:** Full HVAC
- SPRINKLERS:** Wet System Throughout
- COLUMN SPACING:** 25' x 30'



## FLOOR PLAN



SUBLEASE AVAILABLE | OFFICE/FLEX/WAREHOUSE

# 9 CENTENNIAL DRIVE

Peabody, Massachusetts



**LIBERTY TREE MALL**

NORDSTROM  
**rack**

**Best Buy**

**KOHL'S**

**BUFFALO WILD WINGS**  
WIND, BEER, SPORTS

**Total Wine & MORE**

**Panera**

**HOME DEPOT**

**TARGET**

**TRADER JOE'S**

**MARKET BASKET**  
"MORE FOR YOUR DOLLAR"

**SONIC**

**SALEM COUNTRY CLUB**

**NORTHSHORE MALL**

NORDSTROM

**the Cheesecake Factory**

**macy's**

**Chick-fil-A**

**at&t**

**SEPHORA**

**EMERGENCY NERO**

**JCPenney**

**LOCAL SEA FOODS**  
RESTAURANT • OYSTERS BAR

**9 CENTENNIAL DRIVE**

**Boston Children's at Peabody**  
Until every child is well

**MARRIOTT BOSTON PEABODY**

**DISTANCE TO**

- DOWNTOWN BOSTON: 18.5 mi**
- LOGAN AIRPORT: 15.9 mi**
- ROUTE 1: 1.8 mi**
- I-95: < 0.5 mi**

← MARKET STREET, LYNNFIELD (<5 MILES)

## CONTACT US TO ARRANGE A TOUR

**CHRIS CURLEY**  
Executive Vice President  
617.457.3211  
ccurley@hunnemanre.com

**KEN OPPENHEIM**  
Executive Vice President  
617.457.3301  
koppenheim@hunnemanre.com

**MIKE ALLEN**  
Senior Vice President  
617.457.3276  
mallen@hunnemanre.com

**HUNNEMAN** It means more to us.

303 Congress Street, Boston, MA 02210 617.457.3400 [www.hunnemanre.com](http://www.hunnemanre.com)

©2025 Hunneman. All rights reserved. All information has been obtained from sources believed reliable but no warranty or representation is verified for accuracy or completeness. Caution and independent investigation of property and information should be verified. Reliance on this information is at your own risk.