



FOR LEASE

30,000 SF - 103,350 SF AVAILABLE

SPA Industrial Park

Key Features

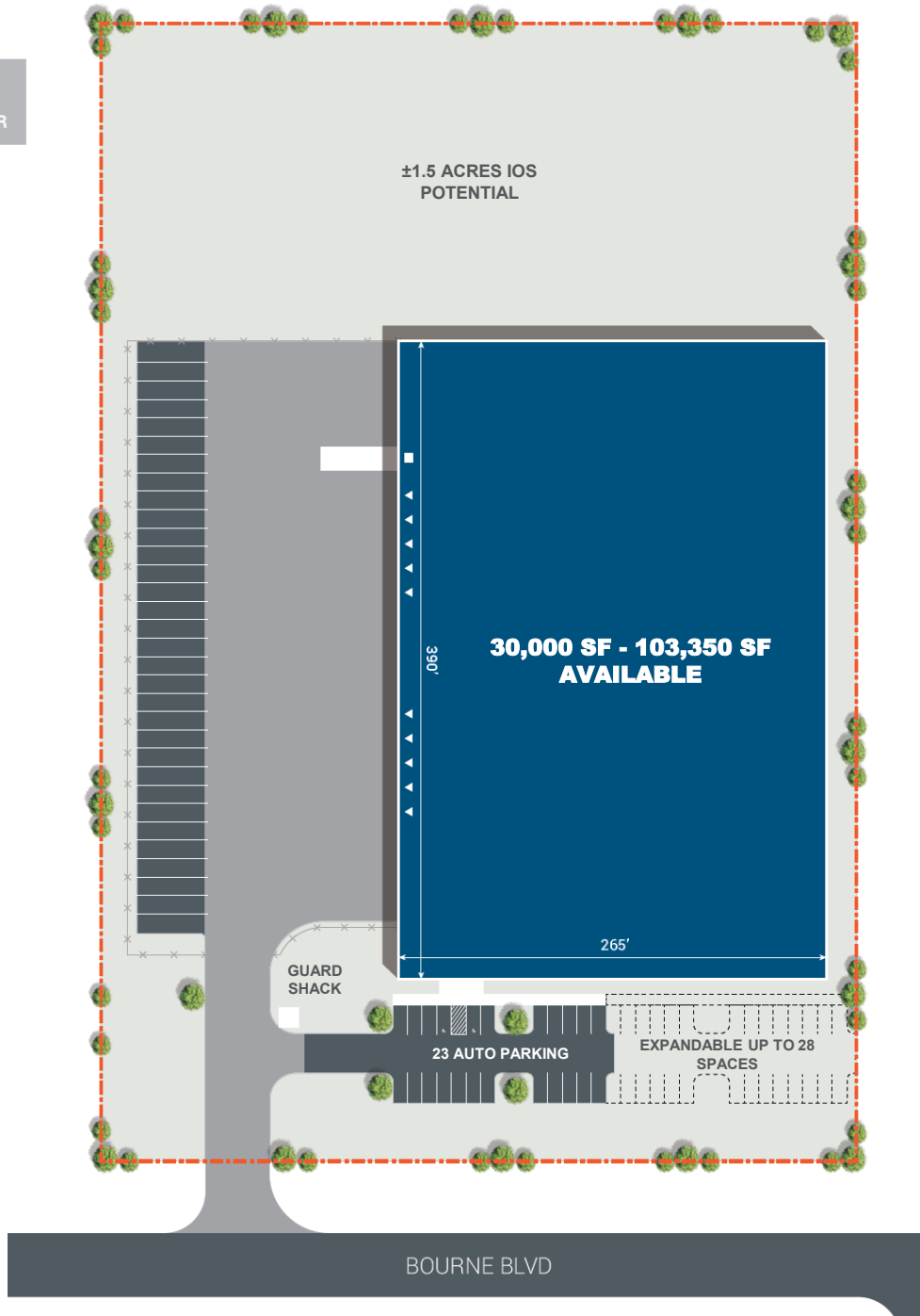
- 103,350 sf single load building, demisable down to 30,000 sf
- 25' clear height
- Fenced in truck court with guard shack
- Concrete lower-façade with metal upper
- ±1.5 acres IOS potential (south end of parcel)

Location Highlights

- ±9 miles to Port of Savannah
- Excellent access to Interstates 16 and 95
- Multiple direct access routes to the Georgia Ports Authority
- Located in SPA Industrial Park currently home to Kaman Industrial Technologies, FedEx, Gulfstream, and Pulte Homes, among others

Property Specs	
Total Space	103,350 SF
Office SF	±2,300 SF
Dock Doors	10
Drive-in Doors	1
Auto Parking	23
Clear Height	25'
Sprinklers	Wet
Power	400-amp with 277/480v
Construction	Concrete lower-façade with metal upper
Year Built	2000

- ▲ DOCK DOOR
- DRIVE-IN DOOR

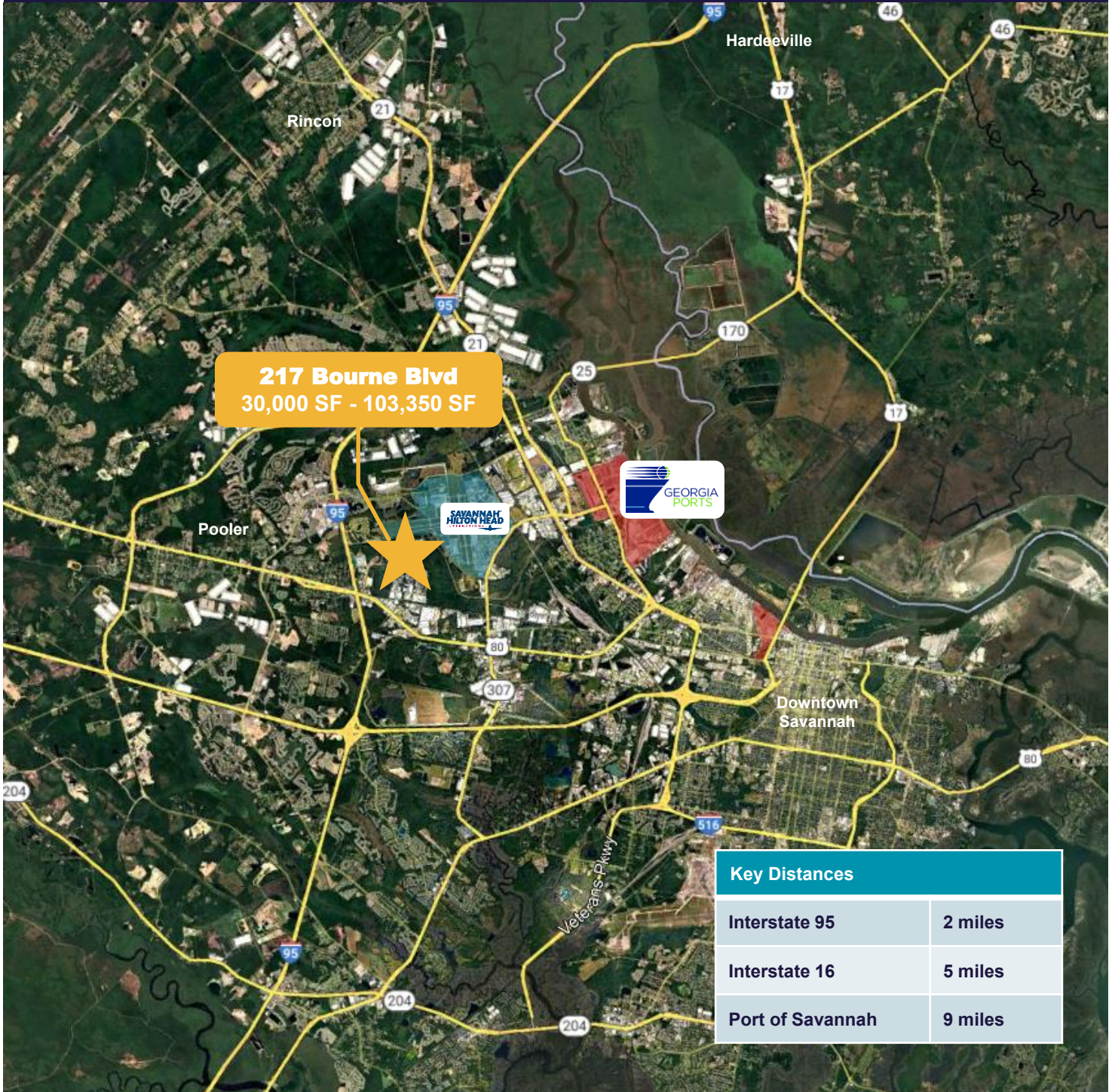


FOR MORE INFORMATION

Stephen Ezelle, SIOR
Partner
+1 912 441 3083
sezelle@gilbertezelle.com

820 Abercorn Street
Savannah, GA 31401
+1 912 236 8992
gilbertezelle.com

gilbertezelle.com



Key Distances	
Interstate 95	2 miles
Interstate 16	5 miles
Port of Savannah	9 miles

FOR MORE INFORMATION

Stephen Ezelle, SIOR
Partner
+1 912 441 3083
sezelle@gilbertezelle.com

820 Abercorn Street
Savannah, GA 31401
+1 912 236 8992
gilbertezelle.com

gilbertezelle.com