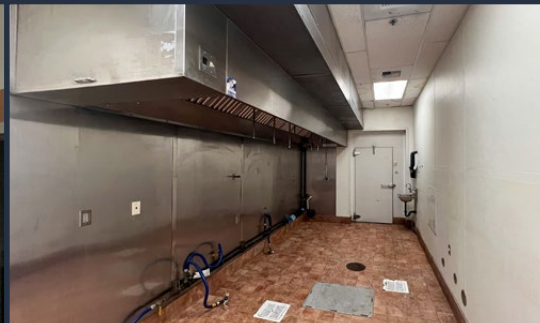


# FOR LEASE

**2,000 SF | \$2.00/SF/MO. MG**

## Kitchen/Retail Space Near Costco

63595 Hunnell Rd., Bend, OR 97703



### PROPERTY DETAILS

<b>Suite 100:</b>	2,000 SF
<b>Lease Rate:</b>	\$2.00/SF/Mo. MG
<b>Bldg. Size:</b>	30,000 SF
<b>Year Built:</b>	2006
<b>Zoning:</b>	General Commercial (CG)
<b>Parking:</b>	Ample parking available

### HIGHLIGHTS

- Great opportunity for commissary kitchen and food production
- 20' type 1 hood
- Walk in refrigerator and cooler available
- Floor drain, grease traps, and hand washing sinks included
- Convenient location on Bend's North end, close to Costco

**Luke Ross, Broker | Terry O'Neil, Broker**

600 SW Columbia St., Ste. 6100 | Bend, OR 97702

**541.383.2444** | [www.CompassCommercial.com](http://www.CompassCommercial.com)

**COMPASS**  
COMMERCIAL

**REAL  
ESTATE  
SERVICES**



# FOR LEASE

2,000 SF | \$2.00/SF/MO. MG

## Kitchen/Retail Space Near Costco

63595 Hunnell Rd., Bend, OR 97703

### DEMOGRAPHICS - 3-MILE RADIUS

#### POPULATION STATS

  
36,154

2025 Total  
Population

  
38,931

2030 Total  
Population

  
1.49%

2025-2030  
Population: Annual  
Growth Rate

  
40.9

2025 Median  
Age


#### 2025 BUSINESS STATS

  
1,587

Total  
Businesses

  
14,934

Total  
Employees

  
3.4%

Unemployment

  
60,301

Per Capita  
Income

#### 2025 HOUSING STATS

  
\$739,956

Median Home  
Value

  
14,395

Total  
Households (HH)

  
113,673

Median HH  
Income


  
15,356

Total Housing  
Units

#### 2025 EDUCATION STATS

  
3%

No High School  
Diploma

  
16%

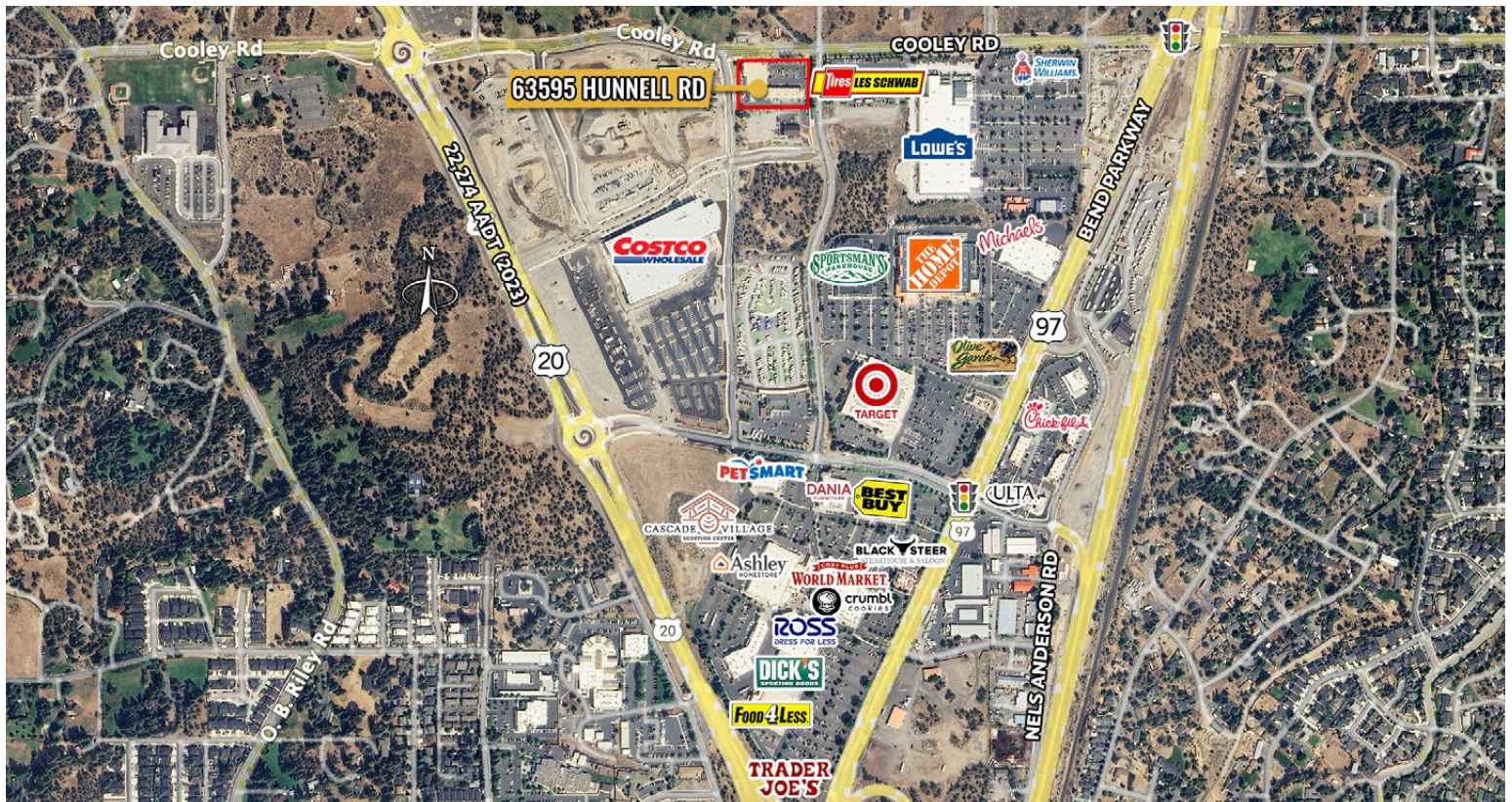
High School  
Graduate

  
28%

Some College

  
53%

Bachelor's/Grad  
/Prof Degree



Brokers are licensed in the state of Oregon. This information has been furnished from sources we deem reliable, but for which we assume no liability. This is an exclusive listing. The information contained herein is given in confidence with the understanding that all negotiations pertaining to this property be handled through Compass Commercial Real Estate Services. All measurements are approximate.



**Luke Ross**

Broker

Cell 541.480.6144

lross@compasscommercial.com



**Terry O'Neil**

Broker

Cell 541.408.1202

toneil@compasscommercial.com

**COMPASS**  
COMMERCIAL

**REAL  
ESTATE  
SERVICES**