

LaPlace Value-Add Shopping Center

405 Belle Terre Boulevard LaPlace, LA 70068

PROPERTY SUMMARY



Property Description

6,382 SF value-add retail center located in LaPlace, LA. The Property benefits from excellent visibility on Belle Terre Blvd, one of the primary thoroughfares in the market. Nearby retailers include Walmart, Home Depot, Winn-Dixie, Aldi, Harbor Freight, Chick-Fil-A, McDonald's, and more.

The center consists of 3 suites. Suite A (3,572 SF end-cap restaurant) is occupied by Fratelli's Italian Grille and Suite C is currently occupied by Carmouche Jewelers on an MTM basis. Suite B will be delivered vacant, a 1,365 SF inline suite, suitable for retail, medical, or office.

Excellent opportunity for value-add investor. Future potential to add drive-thru to end-cap restaurant. Great access with 2 points of ingress/egress on Belle Terre Blvd. 75 parking spaces (11.8 / 1,000 SF).

Bryant Butler
225.237.3343
bbutler@beaubox.com

Beau Box, SIOR
225.931.3200
bbox@beaubox.com

Broker of Record, Beau J. Box; Licensed by the Louisiana Real Estate Commission, Mississippi Real Estate Commission, Alabama Real Estate Commission and Florida Real Estate Commission, USA. This information has been secured from sources we believe to be reliable, but we make no representations or warranties, expressed or implied, as to the accuracy of the information. References to square footage or age are approximate. Buyer must verify the information and bears all risk for any inaccuracies. © Beau Box Commercial Real Estate. 5500 Bankers Avenue, Baton Rouge, LA 70808 | 225-237-3343. | November 19, 2025

Offering Summary

Sale Price:	\$1,088,000
Building Size:	6,382 SF
Lot Size:	1.4 Acres
Price (PSF):	\$170.48

Highlights:

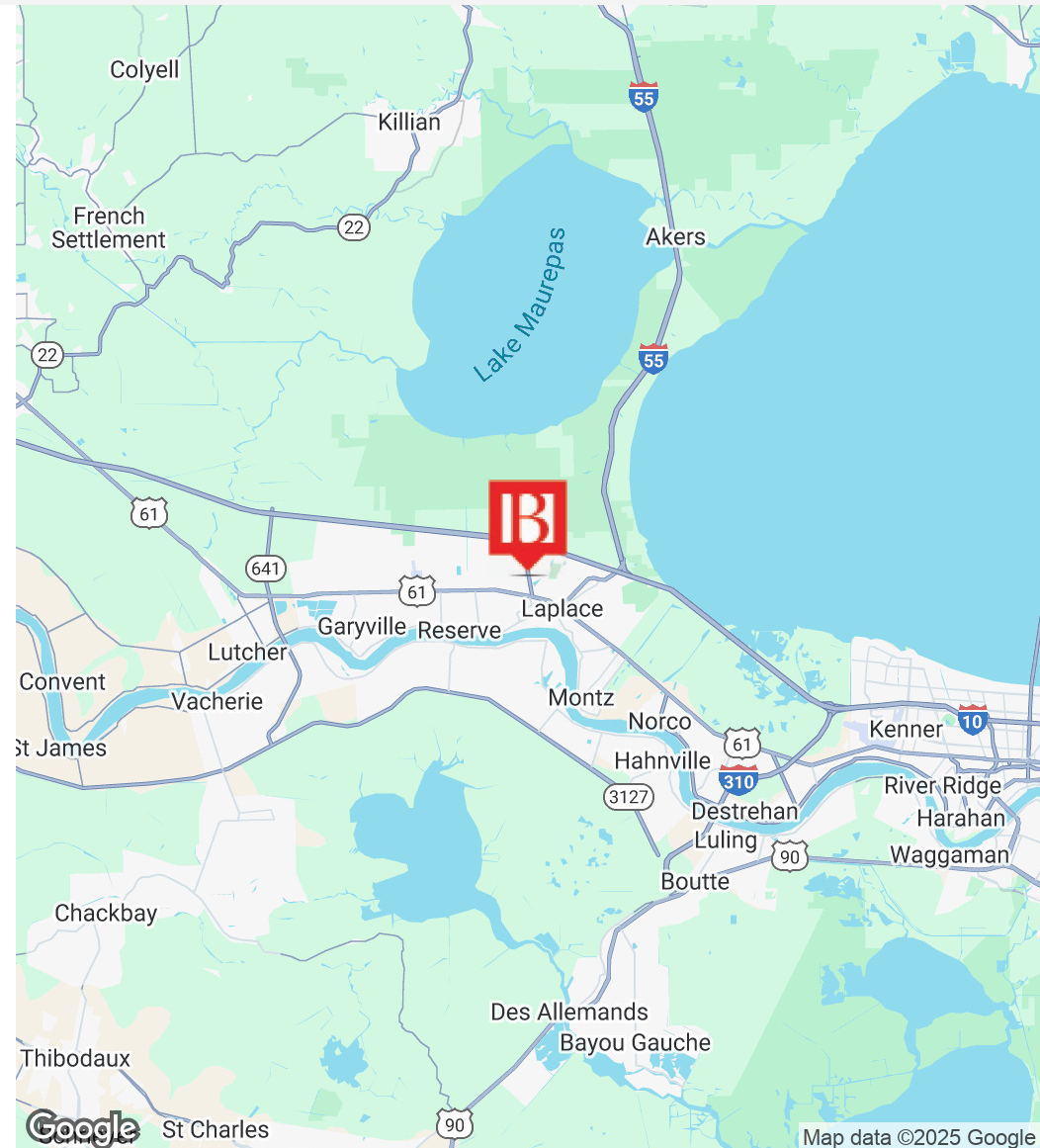
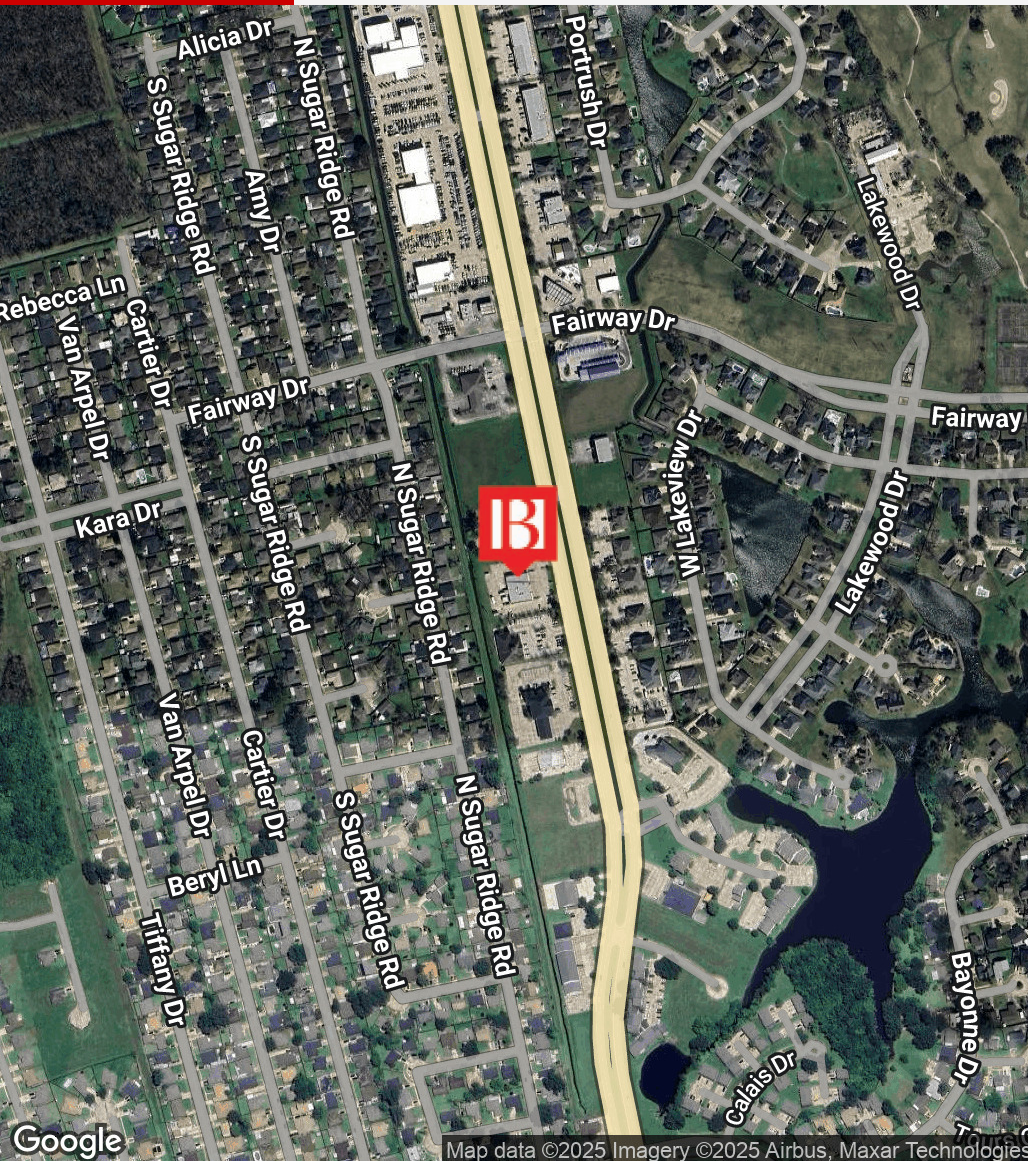
- Value-Add Retail Center - Limited Retail Investment Opportunities in River-Parishes Area
- Located Near Major Retail Corridor Serving the Trade Area
- Excellent Access from Belle Terre Blvd, I-10, and US-61



LaPlace Value-Add Shopping Center

405 Belle Terre Boulevard LaPlace, LA 70068

LOCATION MAP



Bryant Butler
225.237.3343
bbutler@beaubox.com

Beau Box, SIOR
225.931.3200
bbox@beaubox.com

Broker of Record, Beau J. Box; Licensed by the Louisiana Real Estate Commission, Mississippi Real Estate Commission, Alabama Real Estate Commission and Florida Real Estate Commission, USA. This information has been secured from sources we believe to be reliable, but we make no representations or warranties, expressed or implied, as to the accuracy of the information. References to square footage or age are approximate. Buyer must verify the information and bears all risk for any inaccuracies. © Beau Box Commercial Real Estate. 5500 Bankers Avenue, Baton Rouge, LA 70808 | 225-237-3343. | November 19, 2025



LaPlace Value-Add Shopping Center

405 Belle Terre Boulevard LaPlace, LA 70068

RETAILER MAP



Map data ©2025 Imagery ©2025 Airbus
Maxar Technologies

Bryant Butler
225.237.3343
bbutler@beaubox.com

Beau Box, SIOR
225.931.3200
bbox@beaubox.com

Broker of Record, Beau J. Box; Licensed by the Louisiana Real Estate Commission, Mississippi Real Estate Commission, Alabama Real Estate Commission and Florida Real Estate Commission, USA. This information has been secured from sources we believe to be reliable, but we make no representations or warranties, expressed or implied, as to the accuracy of the information. References to square footage or age are approximate. Buyer must verify the information and bears all risk for any inaccuracies. © Beau Box Commercial Real Estate. 5500 Bankers Avenue, Baton Rouge, LA 70808 | 225-237-3343. | November 19, 2025



LaPlace Value-Add Shopping Center

405 Belle Terre Boulevard LaPlace, LA 70068

SITE PHOTO



Bryant Butler
225.237.3343
bbutler@beaubox.com

Beau Box, SIOR
225.931.3200
bbox@beaubox.com

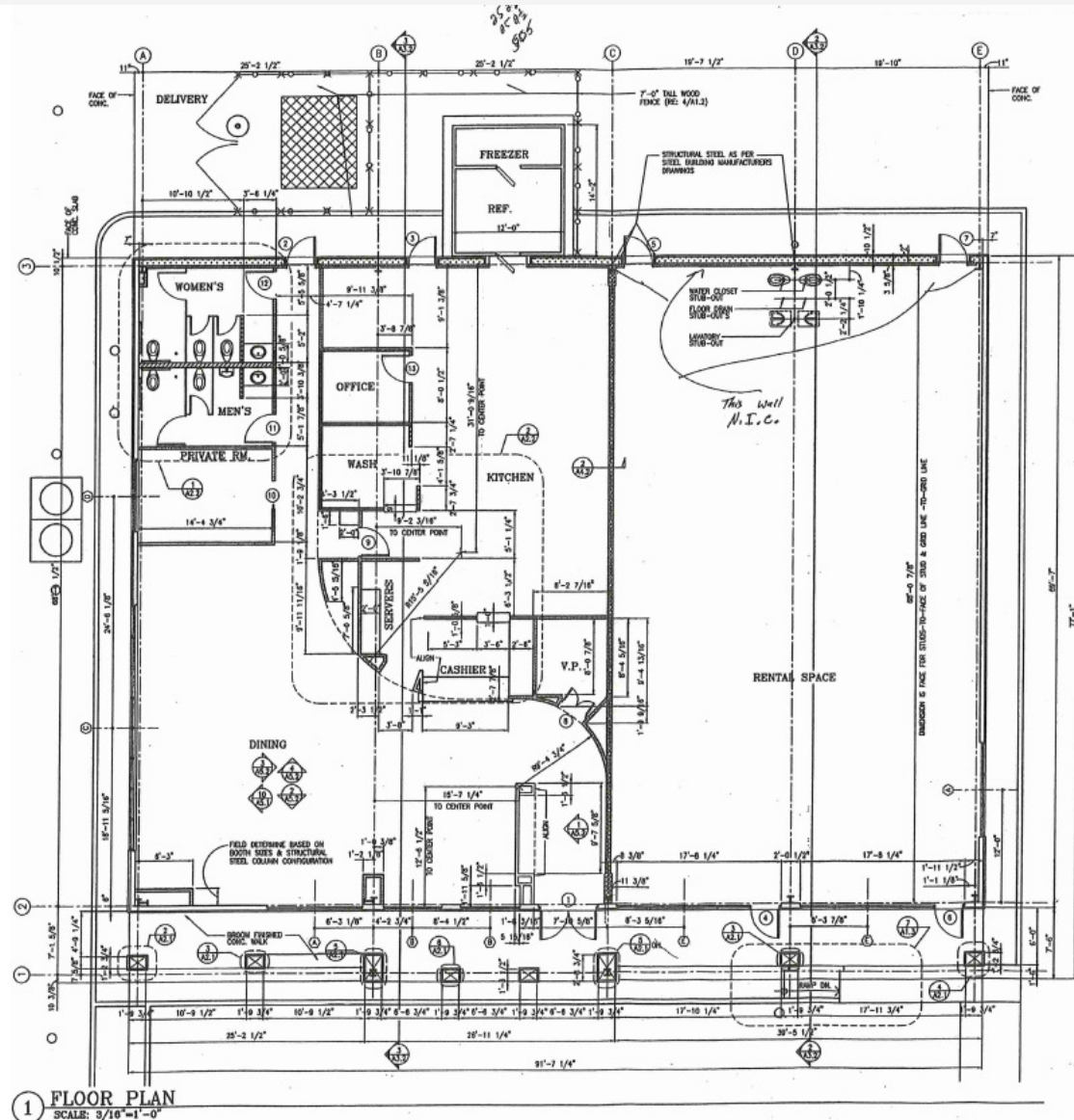
Broker of Record, Beau J. Box; Licensed by the Louisiana Real Estate Commission, Mississippi Real Estate Commission, Alabama Real Estate Commission and Florida Real Estate Commission, USA. This information has been secured from sources we believe to be reliable, but we make no representations or warranties, expressed or implied, as to the accuracy of the information. References to square footage or age are approximate. Buyer must verify the information and bears all risk for any inaccuracies. © Beau Box Commercial Real Estate. 5500 Bankers Avenue, Baton Rouge, LA 70808 | 225-237-3343. | November 19, 2025



LaPlace Value-Add Shopping Center

405 Belle Terre Boulevard LaPlace, LA 70068

FLOOR PLAN



Bryant Butler
225.237.3343
bbutler@beaubox.com

Beau Box, SIOR
225.931.3200
bbox@beaubox.com

Broker of Record, Beau J. Box; Licensed by the Louisiana Real Estate Commission, Mississippi Real Estate Commission, Alabama Real Estate Commission and Florida Real Estate Commission, USA. This information has been secured from sources we believe to be reliable, but we make no representations or warranties, expressed or implied, as to the accuracy of the information. References to square footage or age are approximate. Buyer must verify the information and bears all risk for any inaccuracies. © Beau Box Commercial Real Estate. 5500 Bankers Avenue, Baton Rouge, LA 70808 | 225-237-3343. | November 19, 2025



LaPlace Value-Add Shopping Center
405 Belle Terre Boulevard LaPlace, LA 70068

RENT ROLL

Suite	Tenant Name	Size SF	% Of Building	Escalation Dates	Price / SF / Year	Annual Rent	Lease Start	Lease End
A	Fratelli's of Laplace, LLC (dba Fratelli's)	3,572 SF	55.97%	10/1/2026 4/1/2027	\$10.08 \$12.09 \$15.45	\$36,000	10/1/2025	10/1/2027
B	Vacant (Inline Retail)	1,366 SF	21.40%	-	-	-	N/A	N/A
C	Carmouche Jewelers	1,444 SF	22.63%	-	\$15.79	\$22,800	MTM	MTM
Totals		6,382 SF	100%			\$58,800		

Bryant Butler
225.237.3343
bbutler@beaubox.com

Beau Box, SIOR
225.931.3200
bbox@beaubox.com

Broker of Record, Beau J. Box; Licensed by the Louisiana Real Estate Commission, Mississippi Real Estate Commission, Alabama Real Estate Commission and Florida Real Estate Commission, USA. This information has been secured from sources we believe to be reliable, but we make no representations or warranties, expressed or implied, as to the accuracy of the information. References to square footage or age are approximate. Buyer must verify the information and bears all risk for any inaccuracies. © Beau Box Commercial Real Estate. 5500 Bankers Avenue, Baton Rouge, LA 70808 | 225-237-3343. | November 19, 2025



LaPlace Value-Add Shopping Center

405 Belle Terre Boulevard LaPlace, LA 70068

SUITE A (RESTAURANT)



Bryant Butler
225.237.3343
bbutler@beaubox.com

Beau Box, SIOR
225.931.3200
bbox@beaubox.com

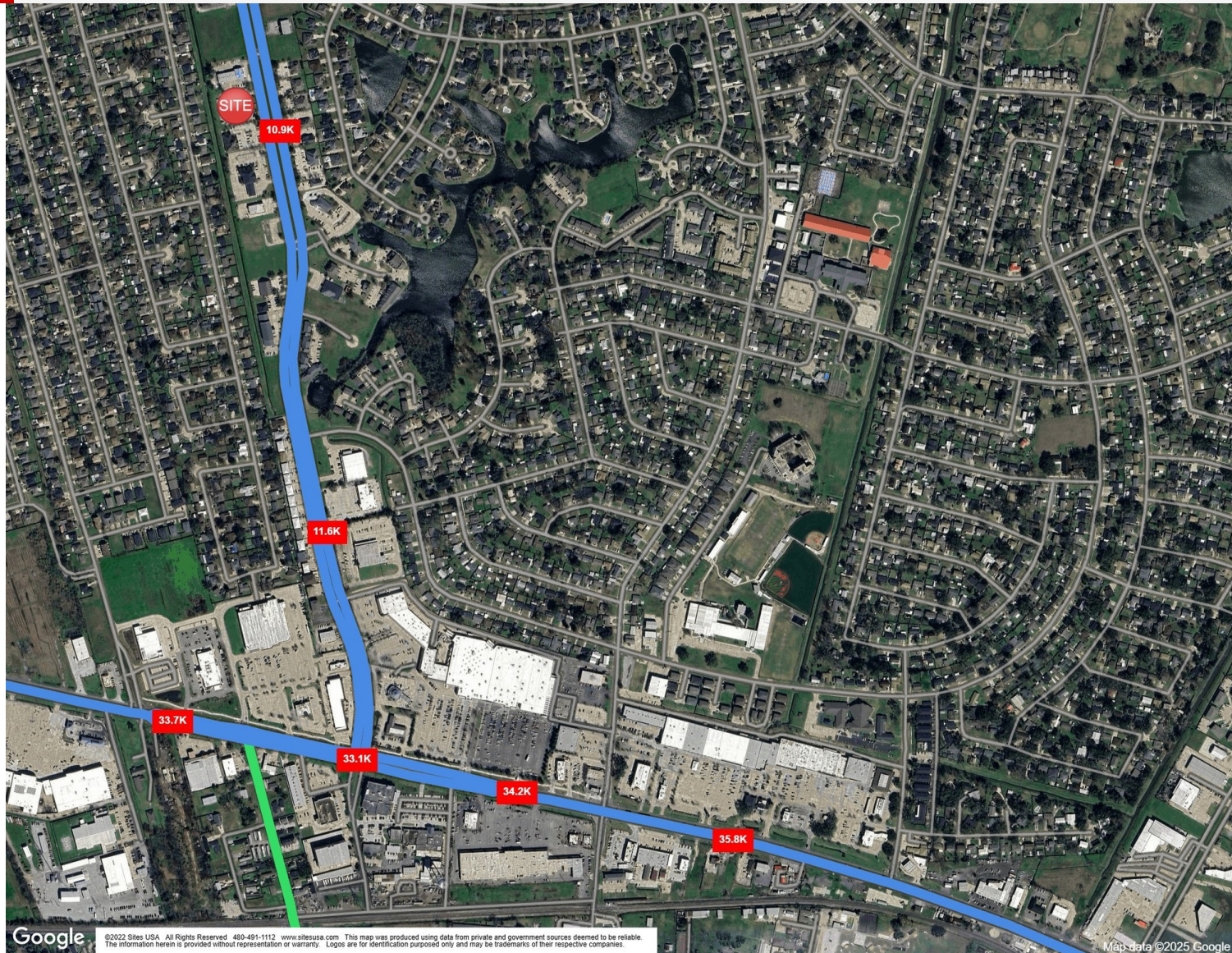
Broker of Record, Beau J. Box; Licensed by the Louisiana Real Estate Commission, Mississippi Real Estate Commission, Alabama Real Estate Commission and Florida Real Estate Commission, USA. This information has been secured from sources we believe to be reliable, but we make no representations or warranties, expressed or implied, as to the accuracy of the information. References to square footage or age are approximate. Buyer must verify the information and bears all risk for any inaccuracies. © Beau Box Commercial Real Estate. 5500 Bankers Avenue, Baton Rouge, LA 70808 | 225-237-3343. | November 19, 2025



LaPlace Value-Add Shopping Center

405 Belle Terre Boulevard LaPlace, LA 70068

TRAFFIC AERIAL



Bryant Butler
225.237.3343
bbutler@beaubox.com

Beau Box, SIOR
225.931.3200
bbox@beaubox.com

Broker of Record, Beau J. Box; Licensed by the Louisiana Real Estate Commission, Mississippi Real Estate Commission, Alabama Real Estate Commission and Florida Real Estate Commission, USA. This information has been secured from sources we believe to be reliable, but we make no representations or warranties, expressed or implied, as to the accuracy of the information. References to square footage or age are approximate. Buyer must verify the information and bears all risk for any inaccuracies. © Beau Box Commercial Real Estate. 5500 Bankers Avenue, Baton Rouge, LA 70808 | 225-237-3343. | November 19, 2025



LaPlace Value-Add Shopping Center

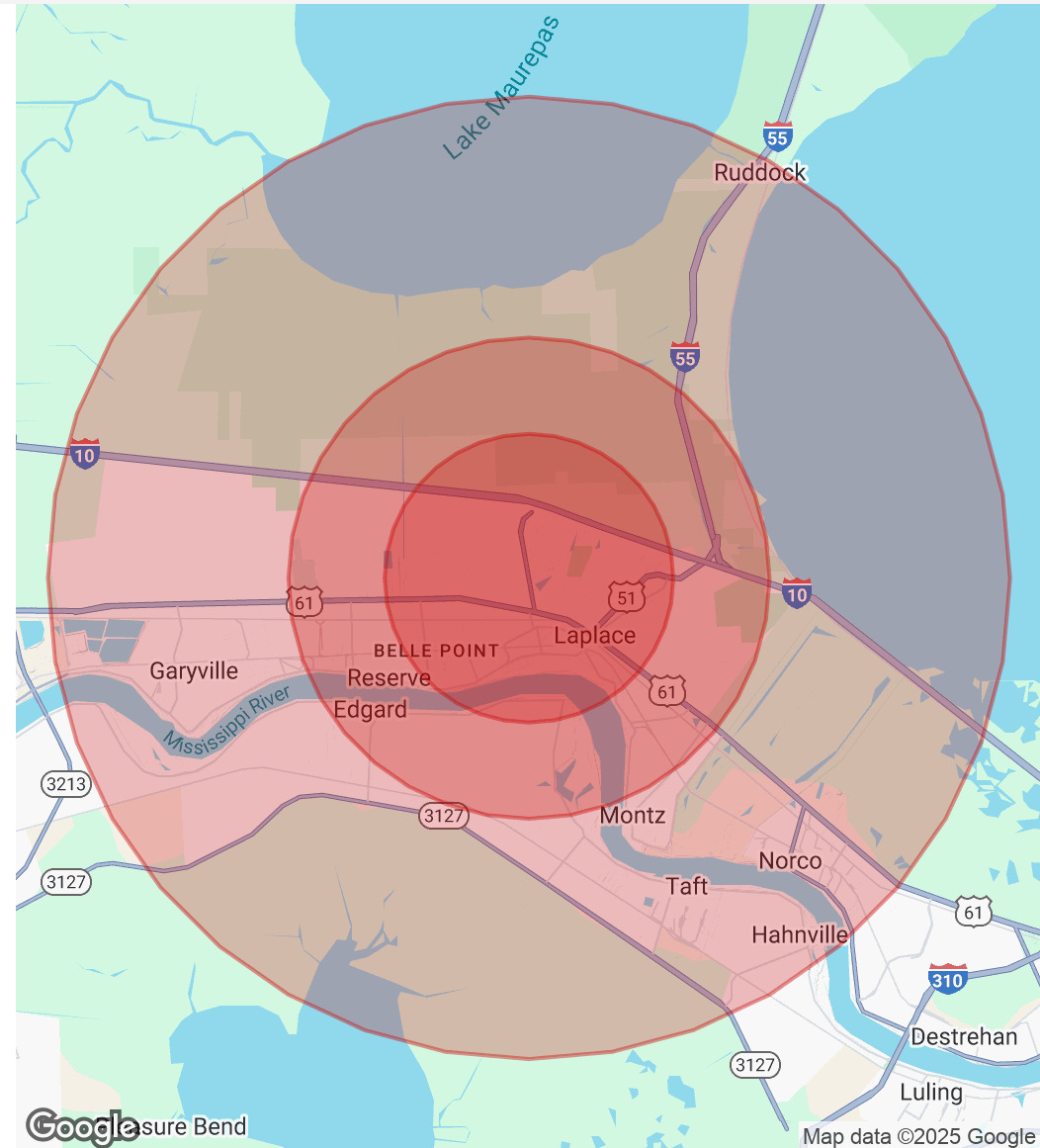
405 Belle Terre Boulevard LaPlace, LA 70068

DEMOGRAPHICS MAP & REPORT

Population	3 Miles	5 Miles	10 Miles
Total Population	28,778	36,662	47,947
Average Age	40	40	41
Average Age (Male)	38	39	40
Average Age (Female)	41	41	41

Households & Income	3 Miles	5 Miles	10 Miles
Total Households	10,665	13,752	17,979
# Of Persons Per HH	2.7	2.7	2.7
Average HH Income	\$94,513	\$94,901	\$98,052
Average House Value	\$232,389	\$232,763	\$239,514

Demographics data derived from AlphaMap



Bryant Butler
225.237.3343
bbutler@beaubox.com

Beau Box, SIOR
225.931.3200
bbox@beaubox.com

Broker of Record, Beau J. Box; Licensed by the Louisiana Real Estate Commission, Mississippi Real Estate Commission, Alabama Real Estate Commission and Florida Real Estate Commission, USA. This information has been secured from sources we believe to be reliable, but we make no representations or warranties, expressed or implied, as to the accuracy of the information. References to square footage or age are approximate. Buyer must verify the information and bears all risk for any inaccuracies. © Beau Box Commercial Real Estate. 5500 Bankers Avenue, Baton Rouge, LA 70808 | 225-237-3343. | November 19, 2025

