

936 FIFTH AVENUE

SOUTHEAST CORNER OF FIFTH AVENUE & EAST 75TH STREET

GROUND FLOOR PROFESSIONAL OFFICE FOR SALE

UPPER EAST SIDE, NEW YORK

STEPS FROM CENTRAL PARK



PROPERTY FEATURES

SIZE

Ground Floor, Unit 1CD: 650 SF

ENTRANCE

Street Entrance

CEILINGS

8 Feet 2 Inches

POSSESSION

Immediate

OCCUPANCY

Former Plastic Surgery Practice

BLOCK & LOT

01389-0069

ASKING PRICE

\$695,000

TAXES & MAINTENANCE

\$2,226 per month

FEATURES

- Private Street Entrance
- Located in a Prestigious Luxury Co-Op Building
- Just steps from Central Park

Exclusively Represented by:

THE DANA COMMERCIAL TEAM

AT DOUGLAS ELLIMAN REAL ESTATE

GARY DANA

212.692.6183

gdana@elliman.com

RICK DANA

212.692.6182

rdana@elliman.com

CHRIS DANA

212.455.4721

cdana@elliman.com

936 FIFTH AVENUE

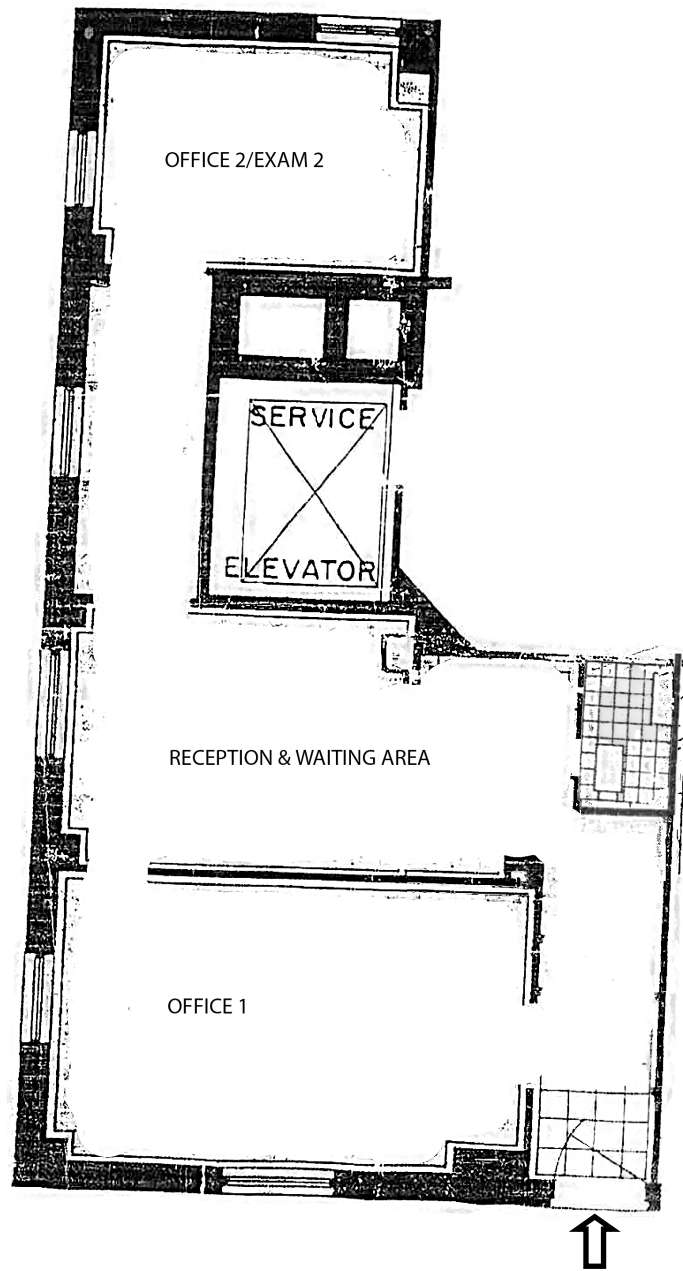
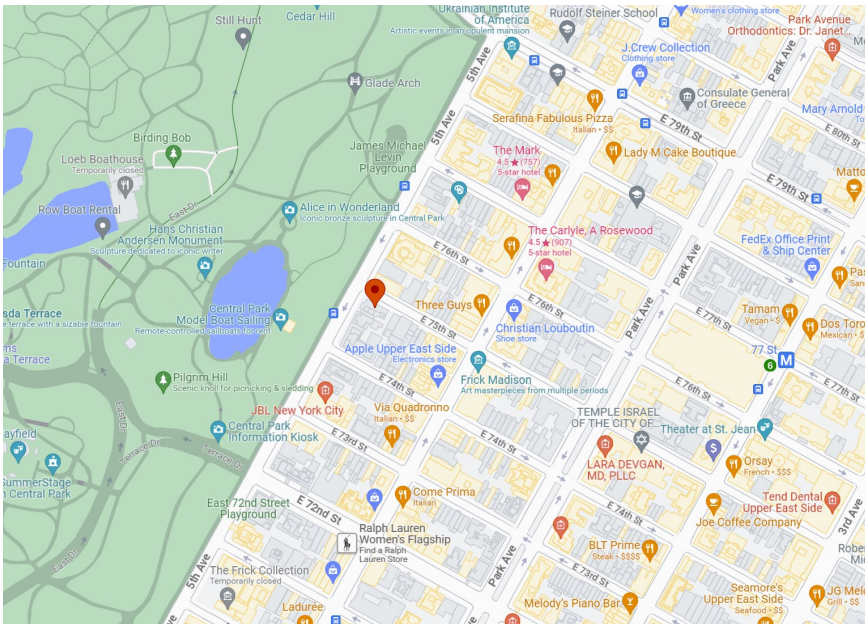
SOUTHEAST CORNER OF FIFTH AVENUE & EAST 75TH STREET



575 MADISON AVENUE, NY, NY 10022. 212.891.7000 © 2021 DOUGLAS ELLIMAN REAL ESTATE. ALL MATERIAL PRESENTED HEREIN IS INTENDED FOR INFORMATION PURPOSES ONLY. WHILE, THIS INFORMATION IS BELIEVED TO BE CORRECT, IT IS REPRESENTED SUBJECT TO ERRORS, OMISSIONS, CHANGES OR WITHDRAWAL WITHOUT NOTICE. ALL PROPERTY INFORMATION, INCLUDING, BUT NOT LIMITED TO SQUARE FOOTAGE, ROOM COUNT, NUMBER OF BEDROOMS AND THE SCHOOL DISTRICT IN PROPERTY LISTINGS SHOULD BE VERIFIED BY YOUR OWN ATTORNEY, ARCHITECT OR ZONING EXPERT. IF YOUR PROPERTY IS CURRENTLY LISTED WITH ANOTHER REAL ESTATE BROKER, PLEASE DISREGARD THIS OFFER. IT IS NOT OUR INTENTION TO SOLICIT THE OFFERINGS OF OTHER REAL ESTATE BROKERS. WE COOPERATE WITH THEM FULLY. EQUAL HOUSING OPPORTUNITY. 🏠



THE DANA COMMERCIAL TEAM
Douglas Elliman
REAL ESTATE EST. 1911



Exclusively Represented by:

THE DANA COMMERCIAL TEAM

AT DOUGLAS ELLIMAN REAL ESTATE

GARY DANA

212.692.6183

gdana@elliman.com

RICK DANA

212.692.6182

rdana@elliman.com

CHRIS DANA

212.455.4721

cdana@elliman.com

575 MADISON AVENUE, NY, NY 10022. 212.891.7000 © 2021 DOUGLAS ELLIMAN REAL ESTATE. ALL MATERIAL PRESENTED HEREIN IS INTENDED FOR INFORMATION PURPOSES ONLY. WHILE, THIS INFORMATION IS BELIEVED TO BE CORRECT, IT IS REPRESENTED SUBJECT TO ERRORS, OMISSIONS, CHANGES OR WITHDRAWAL WITHOUT NOTICE. ALL PROPERTY INFORMATION, INCLUDING, BUT NOT LIMITED TO SQUARE FOOTAGE, ROOM COUNT, NUMBER OF BEDROOMS AND THE SCHOOL DISTRICT IN PROPERTY LISTINGS SHOULD BE VERIFIED BY YOUR OWN ATTORNEY, ARCHITECT OR ZONING EXPERT. IF YOUR PROPERTY IS CURRENTLY LISTED WITH ANOTHER REAL ESTATE BROKER, PLEASE DISREGARD THIS OFFER. IT IS NOT OUR INTENTION TO SOLICIT THE OFFERINGS OF OTHER REAL ESTATE BROKERS. WE COOPERATE WITH THEM FULLY. EQUAL HOUSING OPPORTUNITY. 🏠



THE DANA COMMERCIAL TEAM
Douglas Elliman
REAL ESTATE

EST. 1911