



GROUND MATRIX



TOP FLOOR OFFICE

at

972

MISSION STREET

San Francisco, CA 94103



Presented By:

Jerry Adamson

707.570.7802

jerry@groundmatrix.com

CalDRE #01935945

FOR LEASE | OFFICE SPACE

Property Summary



PROPERTY DESCRIPTION

972 Mission is a five floor office, retail and flex building that attracts many types of Tenants. Each floor is highly creative with original wood floors, exposed concrete and natural light that flows in through the large windows. The entire Fifth Floor totals +/- 11,000 square feet and is available June 1, 2025, or potentially earlier.

LOCATION DESCRIPTION

The property is centrally located in the South of Market District. The building is in close proximity of many great restaurants, the Westfield Shopping Mall, Union Square, Market Street and public transportation. BART and the Fifth & Mission garage are only one block away.

Jerry Adamson

707.570.7802
jerry@groundmatrix.com
CalDRE #01935945

OFFERING SUMMARY

Availability:	06/01/2025 or earlier
5th Floor SQFT:	+/- 11,000 RSF
Lease Rate:	\$24/RSF/YEAR
Lease Type:	Industrial Gross

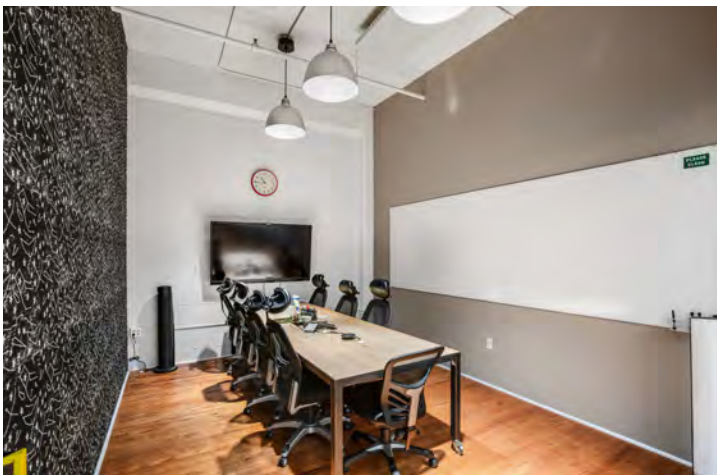
FOR LEASE | OFFICE SPACE



SPACE DESCRIPTION

Experience the ultimate creative workspace on the fully built-out fifth floor, designed in 2018 to inspire productivity and collaboration. The suite features original, beautifully refinished floors, high ceilings, and expansive windows that flood the space with natural light. Multiple exterior conference rooms offer private breakout areas for teams, while the spacious open kitchen provides a perfect spot for coffee, lunch, and informal meetings.

Enjoy competitive leasing rates and professional property management that accommodates your business needs, whether short, medium, or long term.



FIFTH FLOOR HIGHLIGHTS

- Highly creative tech/professional office space
- High ceilings with concrete structure
- Beautiful wood floors throughout the entire space
- Tons of natural light
- 4 Small meeting rooms/offices
- 5 Medium size conference rooms
- 1 Large conference room
- 1 All-Hands meeting room
- Open and modern kitchen with two dishwashers
- Bike Parking
- 2 multi-stall mens/womens restrooms, 1 gender-neutral restroom
- Mother's room
- Multiple Storage closets
- Full HVAC



Jerry Adamson

707.570.7802
jerry@groundmatrix.com
CalDRE #01935945

972

TOP FLOOR CREATIVE OFFICE
MISSION STREET
San Francisco, CA 94103



GROUND MATRIX

FOR LEASE | OFFICE SPACE

5th Floor Photos



Jerry Adamson

707.570.7802
jerry@groundmatrix.com
CalDRE #01935945

972

TOP FLOOR CREATIVE OFFICE
MISSION STREET
San Francisco, CA 94103



GROUND MATRIX

FOR LEASE | OFFICE SPACE

5th Floor Photos



Jerry Adamson

707.570.7802
jerry@groundmatrix.com
CalDRE #01935945

972

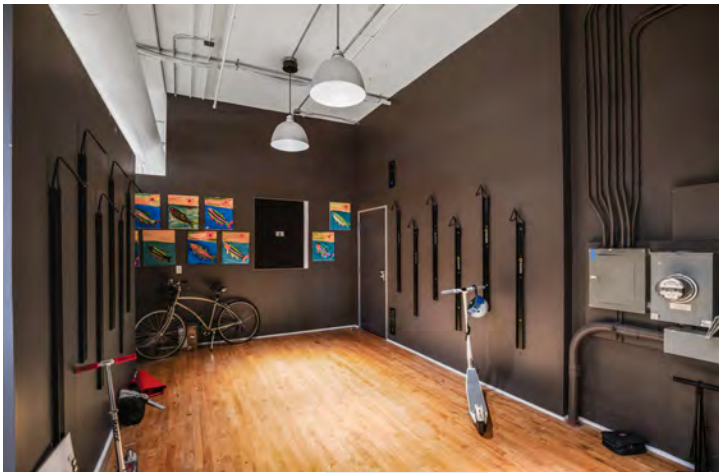
TOP FLOOR CREATIVE OFFICE
MISSION STREET
San Francisco, CA 94103



GROUND MATRIX

FOR LEASE | OFFICE SPACE

5th Floor Photos



Jerry Adamson

707.570.7802
jerry@groundmatrix.com
CalDRE #01935945

972

TOP FLOOR CREATIVE OFFICE
MISSION STREET
San Francisco, CA 94103

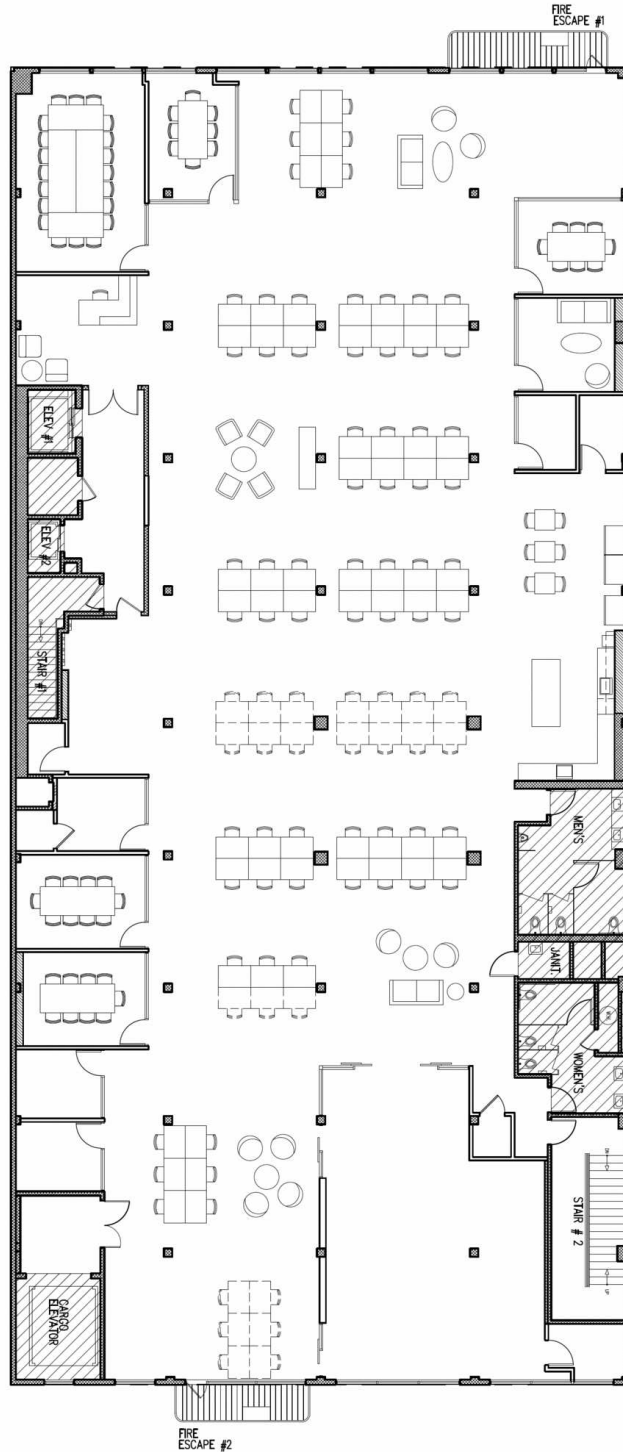


GROUND MATRIX

FOR LEASE | OFFICE SPACE

5th Floor Plans

NOT TO SCALE



Jerry Adamson

707.570.7802
jerry@groundmatrix.com
CalDRE #01935945



FOR LEASE | OFFICE SPACE

Hotel And Transit Map



Jerry Adamson
707.570.7802
jerry@groundmatrix.com
CalDRE #01935945



FOR LEASE | OFFICE SPACE

Bar, Restaurant, Retail Map



Jerry Adamson
707.570.7802
jerry@groundmatrix.com
CalDRE #01935945