



THE SPACE



FOR LEASE | CALL FOR PRICING

Semoran Crossings: End Cap Available with Great Visibility



DETAILS

Lease Rate: Call For Details
 Building Size: ±11,115 SF
 Available: End Cap - 2,000 SF
 Zoning: C-C
 Type: Retail
 Parking: 28 Spaces
 Signage: Pylon

HIGHLIGHTS

- 150' of Frontage along State Rd 436.
- Pylon Sign Availability
- A dedicated turn lane to West bound lane of SR-436
- Excellent Visibility
- Ample Parking

RETAIL SPACE IN COLLEGE PARK

Semoran Crossings is a prominent retail center located at 2192 E Semoran Boulevard in the heart of Apopka, Florida. Strategically positioned along the high-traffic corridor of State Road 436, this dynamic shopping center offers exceptional visibility and accessibility, making it a prime location for retail businesses seeking to capture the growing consumer base in Apopka and North Orange County.

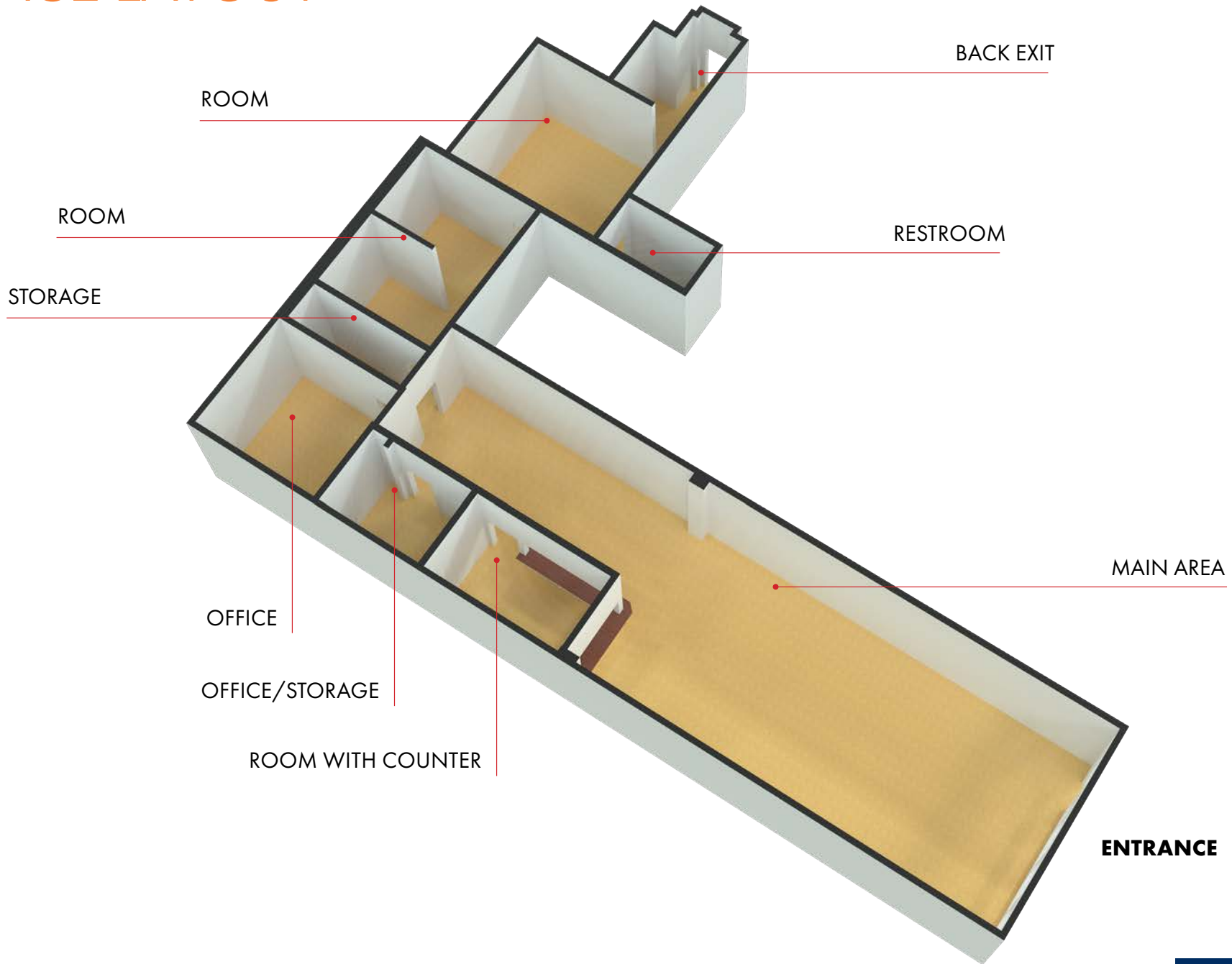


Garrett Gleiter
 Garrett@4acre.com
 407.539.4514

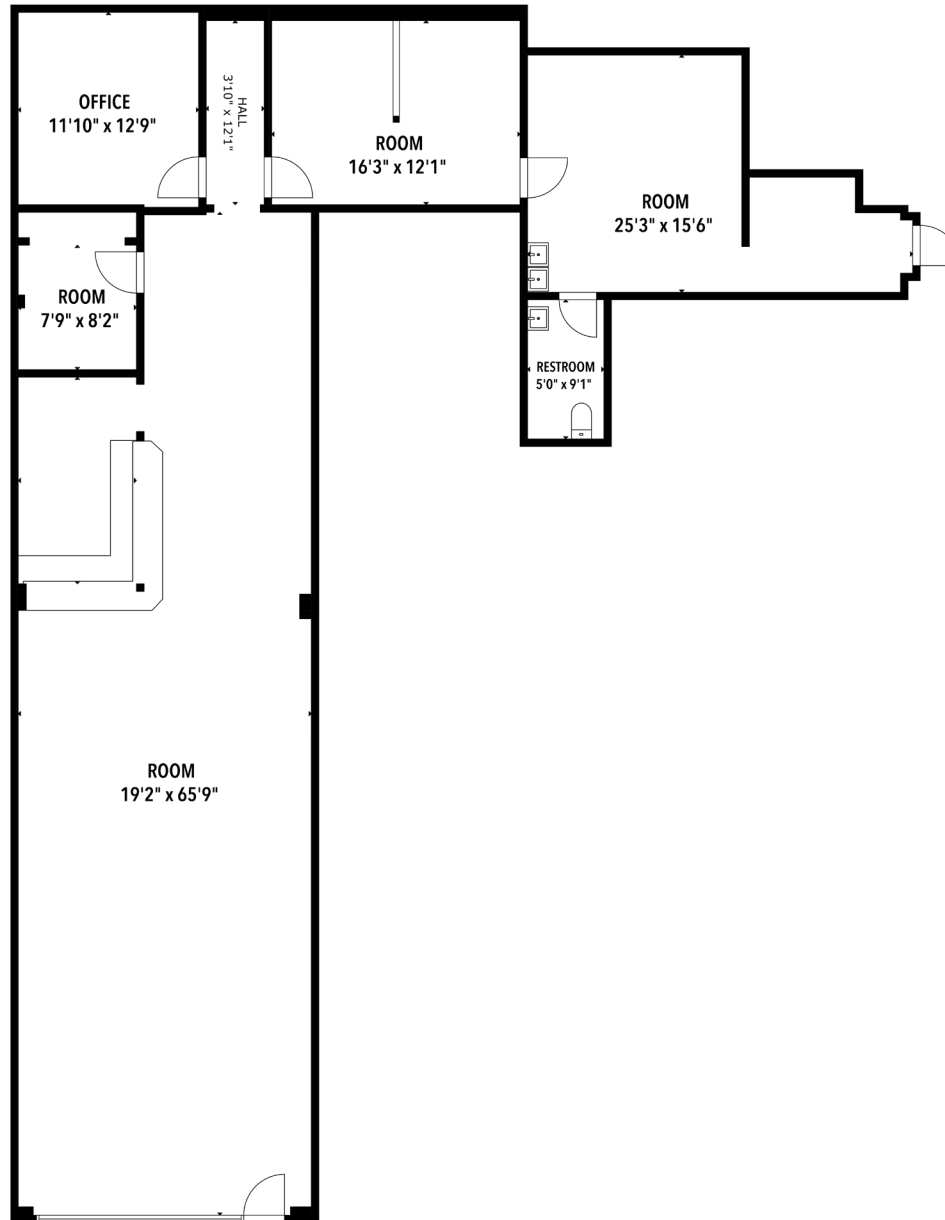


Nicholas Fouraker CCIM
 nick@4acre.com
 407.601.1466

SPACE LAYOUT



FLOOR PLAN



INTERIORS



Main Area



Main with Counter



Front Entrance



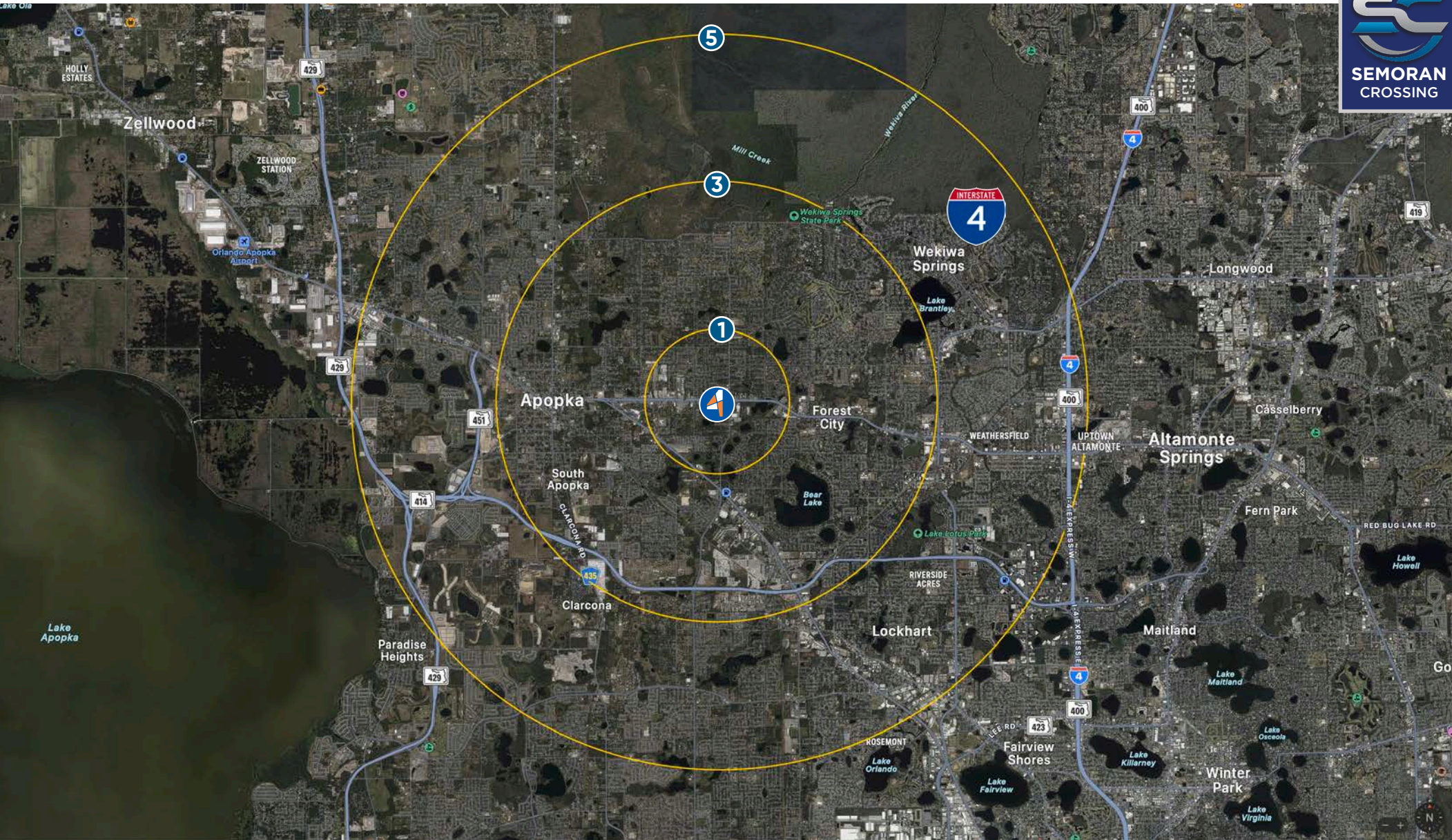
Back Room

AERIAL



POINTS OF INTEREST





LOCATION & DEMOGRAPHICS

Radius	Population	HH Income	Businesses	Employees
1-Mile	11,621	\$68,782	503	4,086
3-Mile	70,802	\$93,290	2,994	23,386
5-Mile	188,948	\$88,064	8,181	63,336



Garrett Gleiter
Garrett@4acre.com
407.539.4514

Nicholas Fouraker CCIM
Nick@4acre.com
407.601.1466

4 Acre Commercial Real Estate (4 Acre) does not represent or warranty the accuracy of the information contained herein. Such information has been given to 4 Acre by the owner of the property or obtained from other sources deemed reliable. 4 Acre has no reason to doubt its accuracy, but does not guarantee it. The reviewer(s) of this document is encouraged to perform their own research for their own purposes to verify the dependability of the information being reviewed. All information should be verified by reviewer(s) prior to purchase or lease. Unless otherwise noted, the property is being offered as-is, where is, with all faults. This information represents the proprietary work product of 4 Acre Realty, LLC and may not be copied, reproduced, modified, distributed, published, transmitted, or otherwise disclosed without the express written consent of 4 Acre Realty, LLC.