

Medical / Professional Office Building

801 Douglas Ave, Altamonte Springs, FL 32714



Overview: Great Signage and Exposure. Frontage on I-4 and Douglas Ave. Express Lane Exit just one block away for quick access from I-4. Located between 436 & 434. Building located at the front entrance of the office park. Parking: Ratio 5.05 per 1,000. ADA Bathroom Compliant.



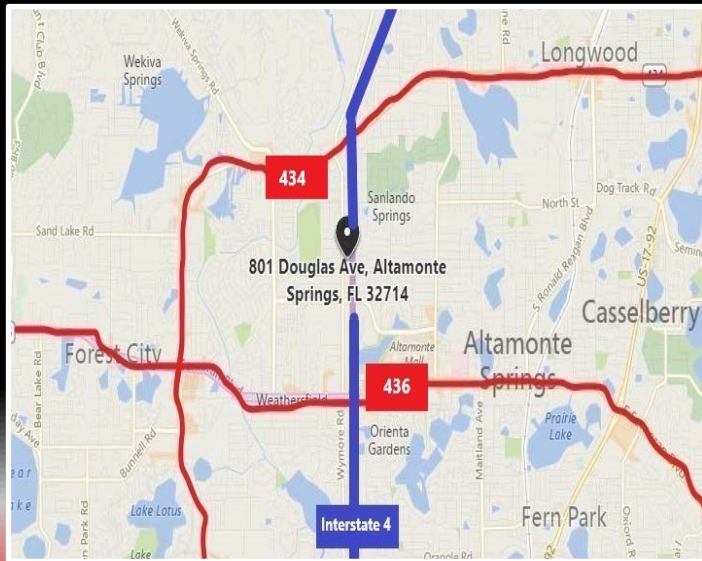
David Lundberg
(407) 701-4400
dlundberg@cepadvisors.com

Greg Kainz
(407) 310-2718
gkainz@cepadvisors.com



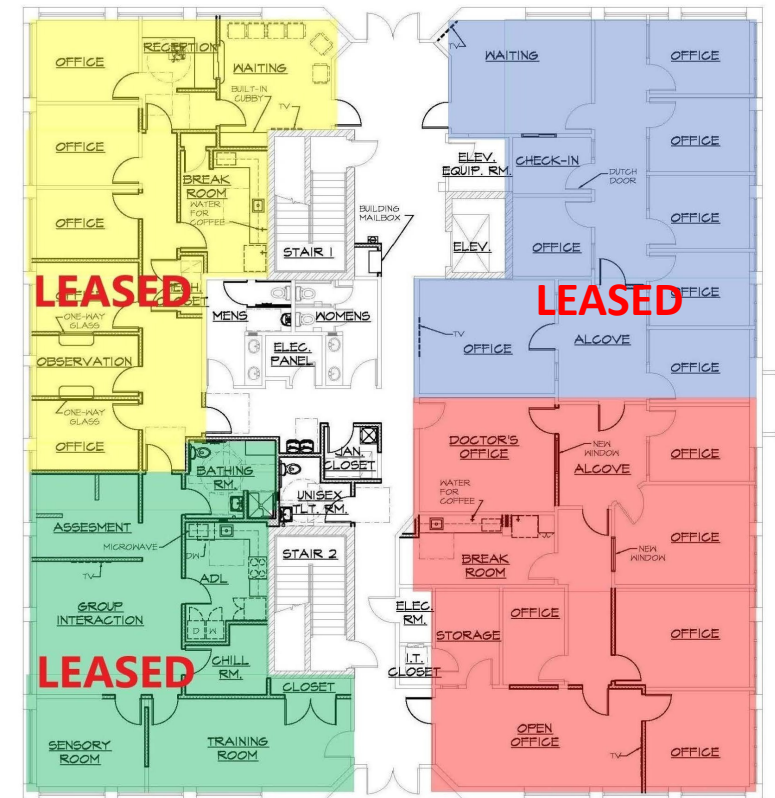
Property Description:

Building is located at the entrance of the Park. Fully built out 1st Floor medical office w/ multiple private exam rooms & offices.
Building and Monument Signage available.



Property Highlights:

24 Hour Access
Building & Signage Opportunity
Douglas Ave & I-4 visibility
Medical Impact Fees have been paid



Suite 1004- 2,182 SF

Suite Size: 2,182 sf
Lease Rate: \$16.45 psf Triple-Net



David Lundberg
(407) 701-4400
dlundberg@cepadvisors.com



Greg Kainz
(407) 310-2718
gkainz@cepadvisors.com



LEGAL DISCLAIMER:

INFORMATION GIVEN HEREWITH IS OBTAINED FROM SOURCES CONSIDERED RELIABLE; HOWEVER, WE ARE NOT RESPONSIBLE FOR MISSTATEMENT OF FACTS, ERRORS, OMISSIONS, PRIOR SALE, AND WITHDRAWAL FROM MARKET, CHANGE IN PRICE OR AVAILABILITY WITHOUT NOTICE. THE INFORMATION SUPPLIED HEREIN IS FOR INFORMATION PURPOSES ONLY AND SHALL NOT CONSTITUTE A WARRANTY OR ASSURANCE THAT SAID INFORMATION IS CORRECT. ANY PERSON INTENDING TO RELY UPON THE INFORMATION SUPPLIED HEREIN SHOULD VERIFY SAID INFORMATION INDEPENDENTLY.