

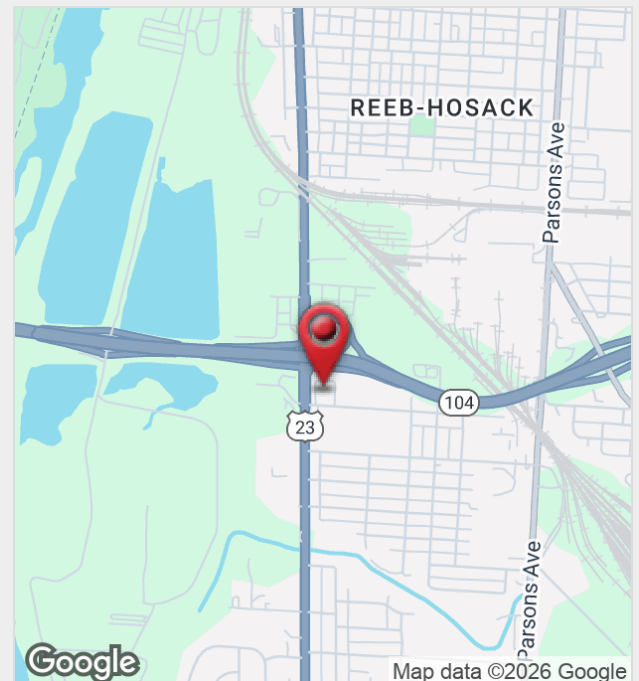
2300 S High Street

2300 S High St. Columbus, Ohio 43207

Property Features

- Available Now
- Ground Floor Retail Space
- Newly Built Dering Family Homes
- 6,496 Gross Leasable Area
- Move in Ready Daycare Buildout
- 4,086 SF of Classroom Area
- Occupancy at 46 currently
- 1,521 SF Playground Area connected
- Modern and Versatile Layout
- E Use Breakroom and Commercial Kitchen
- Reception and Circulation Areas
- 4 Handwashing Stations
- 6 Restrooms total for staff and children

Lease Rate: \$12 SF/Yr (NNN)



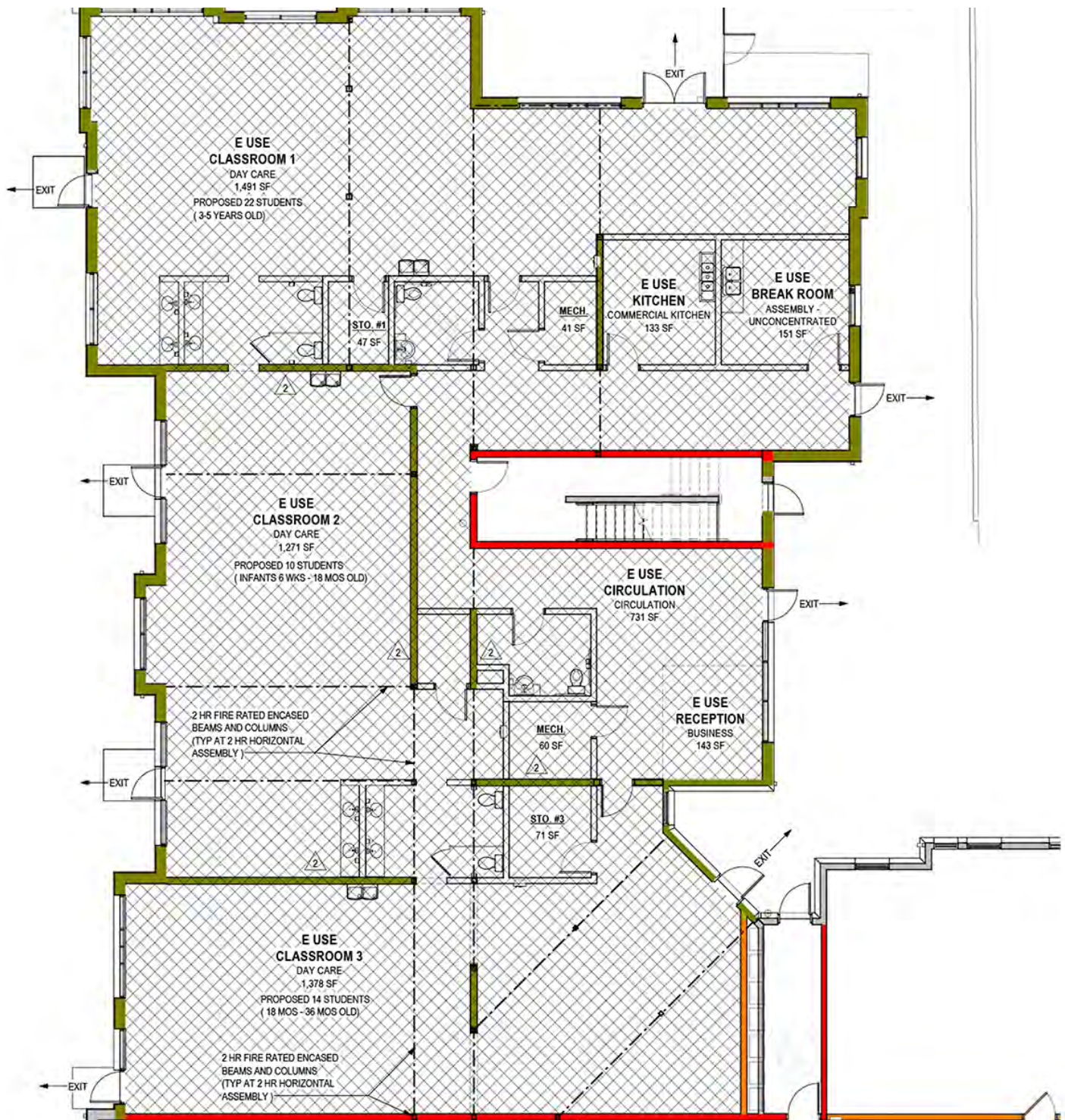
For more information:

John Mally

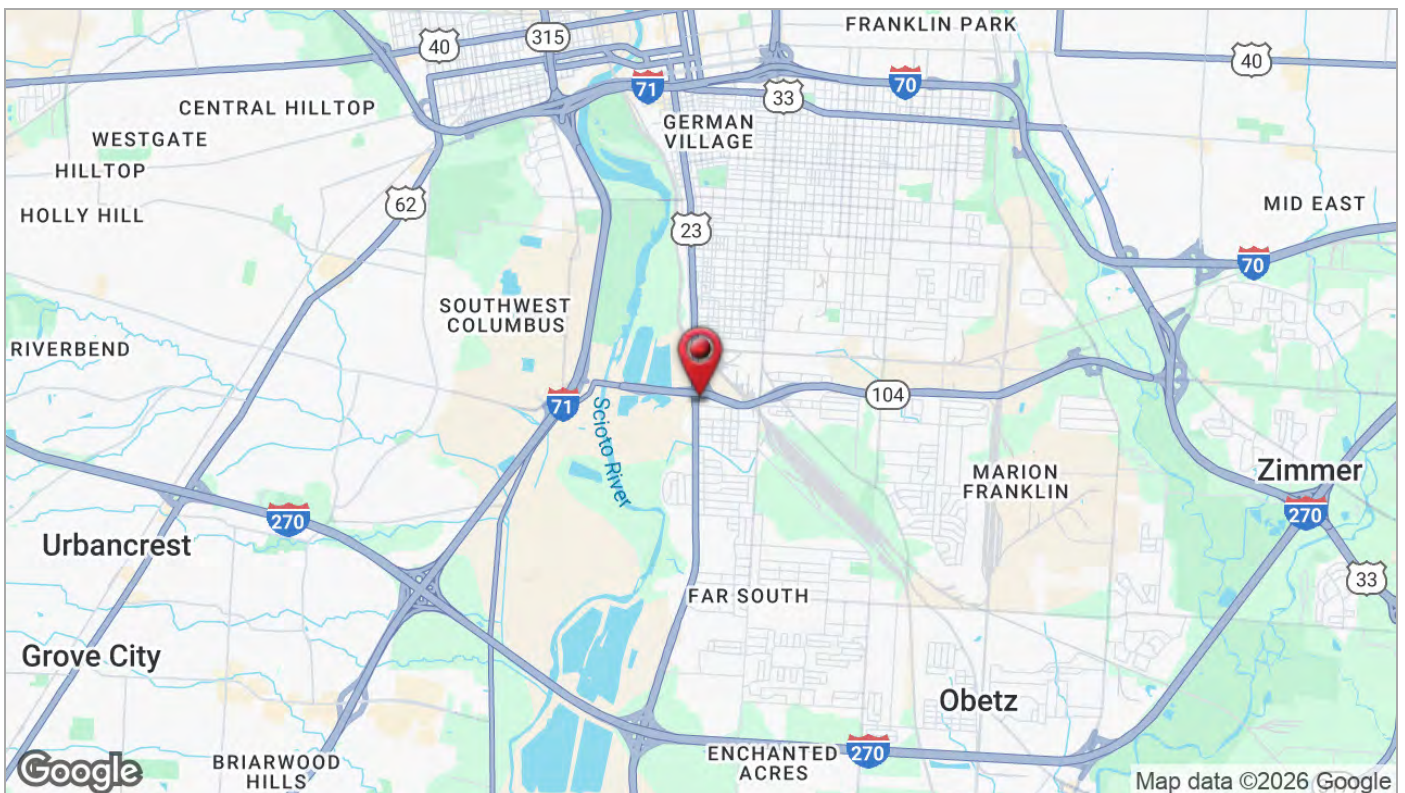
614 629 5254 • jmally@ohioequities.com

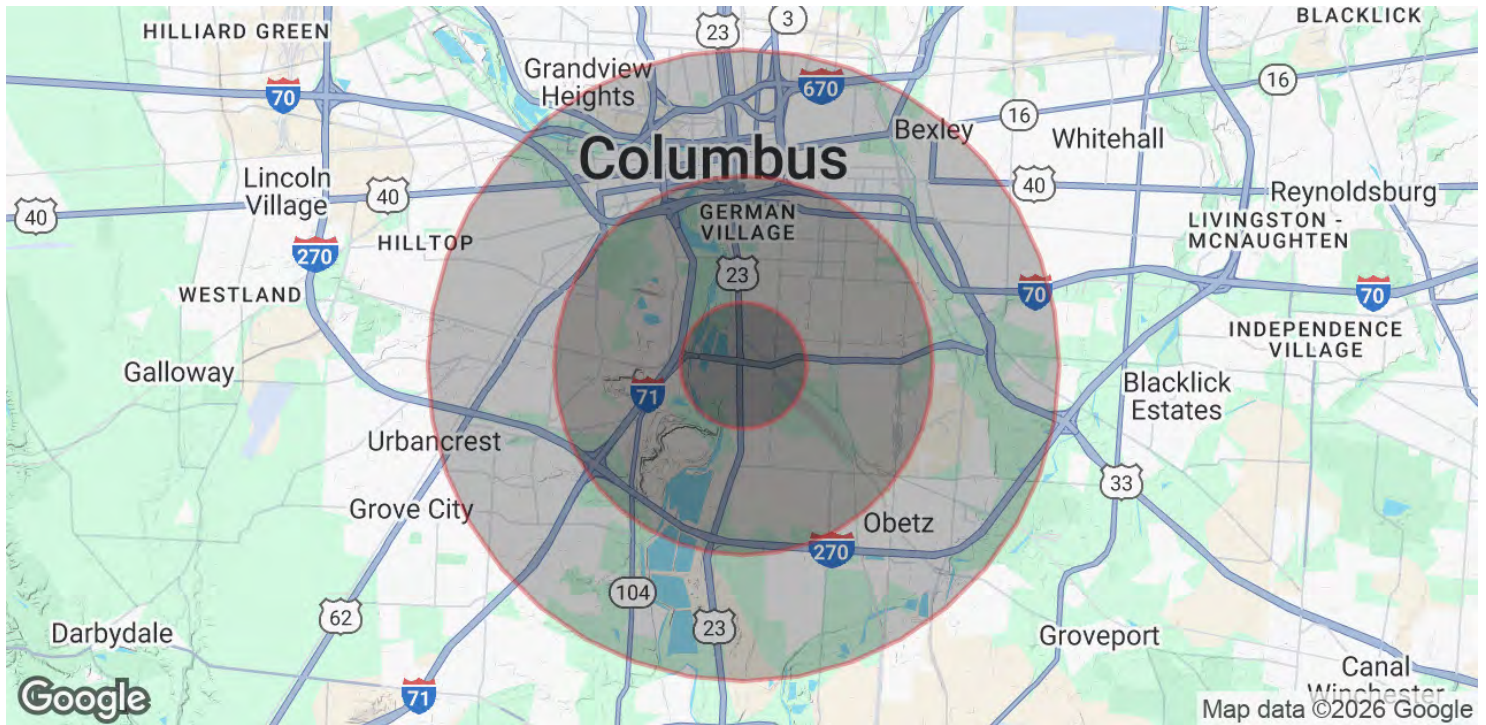


SPACE	SUITE #	SPACE USE	LEASE RATE	LEASE TYPE	SIZE (SF)	AVAILABILITY
Suite 200	200	Community Center	\$12.00 SF/YR	NNN	6,496 SF	Now









POPULATION

	1 MILE	3 MILES	5 MILES
Total Population	5,138	73,496	223,982
Average Age	41	39	38
Average Age (Male)	41	38	38
Average Age (Female)	41	39	39

HOUSEHOLDS & INCOME

	1 MILE	3 MILES	5 MILES
Total Households	2,129	31,367	97,808
# of Persons per HH	2.4	2.3	2.3
Average HH Income	\$64,323	\$76,394	\$80,306
Average House Value	\$194,039	\$279,435	\$296,139

Demographics data derived from AlphaMap