

# AVAILABLE FOR LEASE

**403 HWY 183, Powdersville, SC 29673**



- +/- 10,750 sf Showroom/Shop
- (100 % Conditioned Space)
- +/- .8 of an Acre
- Between Exits 39 & 40 off I-85 South
- Great Signage Available
- Building A
- 4 Drive In Doors
- Anderson County
- TMS 2370005015
- Interstate 85 Visibility

**Bradford Johnson, CCIM**  
**RE/MAX Results**  
400 E McBee Avenue, Ste 112  
Greenville, SC 29601  
864.230.1884 Cellular  
[brad@bradjohnson-ccim.net](mailto:brad@bradjohnson-ccim.net)

**Becky Call**  
**RE/MAX Results**  
400 E McBee Avenue, Ste 112  
Greenville, SC 29601  
864.230.1884 585-409-1869  
[becky@bradjohnson-ccim.net](mailto:becky@bradjohnson-ccim.net)

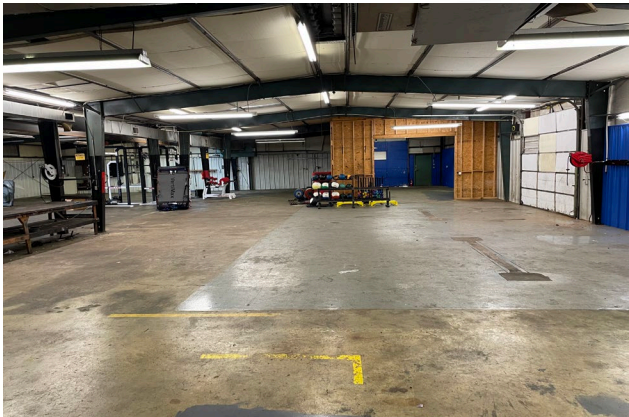


All information deemed to be reliable, but not guaranteed. It is your responsibility to confirm any and all information

**A Better Way in**  
**Commercial Real Estate**

# AVAILABLE FOR LEASE

**403 HWY 183, Powdersville, SC 29673**



**Bradford Johnson, CCIM**  
RE/MAX Results  
400 E McBee Avenue, Ste 112  
Greenville, SC 29601  
864.230.1884  
[brad@bradjohnson-ccim.net](mailto:brad@bradjohnson-ccim.net)

**Becky Call**  
RE/MAX Results  
400 E McBee Avenue, Ste 112  
Greenville, SC 29601  
585-409-1869  
[becky@bradjohnson-ccim.net](mailto:becky@bradjohnson-ccim.net)



All information deemed to be reliable, but not guaranteed. It is your responsibility to confirm any and all information

**A Better Way in**  
Commercial Real Estate



# AVAILABLE FOR LEASE

**403 HWY 183, Powdersville, SC 29673**



Bradford Johnson, CCIM  
RE/MAX Results  
400 E McBee Avenue, Ste 112  
Greenville, SC 29601  
864.230.1884 Cellular  
[brad@bradjohnson-ccim.net](mailto:brad@bradjohnson-ccim.net)

Becky Call  
RE/MAX Results  
400 E McBee Avenue, Ste 112  
Greenville, SC 29601  
585-409-1869  
[becky@bradjohnson-ccim.net](mailto:becky@bradjohnson-ccim.net)

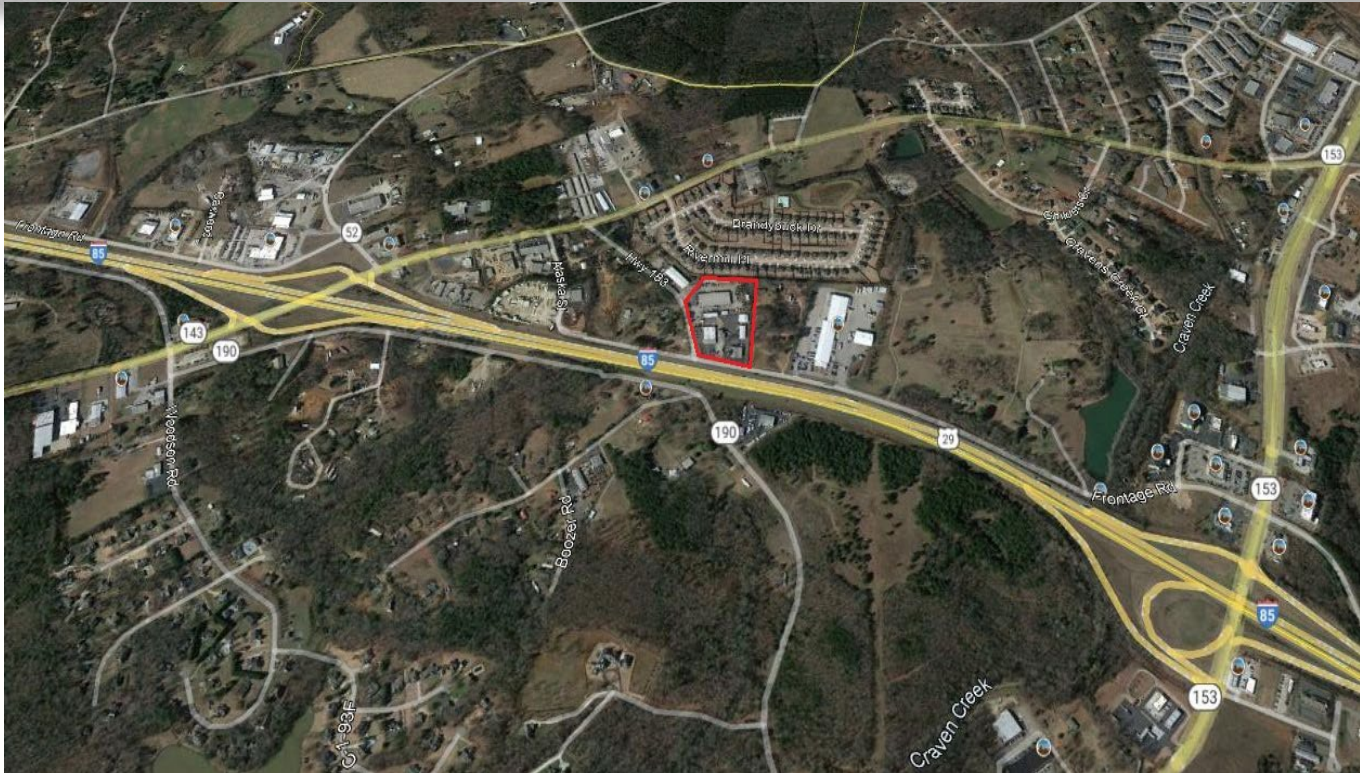


A Better Way in  
Commercial Real Estate



# AVAILABLE FOR LEASE

**403 HWY 183, Powdersville, SC 29673**



- +/- 10,750 sf Showroom/Shop
- (100 % Conditioned Space)
- +/- .8 of an Acre
- Between Exits 39 & 40 I-85 South
- Great Signage Available
- Building A
- 4 Drive In Doors
- Anderson County
- TMS 2370005015
- Interstate 85 Visibility

**Bradford Johnson, CCIM**  
RE/MAX Results  
400 McBee Avenue, Ste 400  
Greenville, SC 29601  
864.230.1884  
[brad@bradjohnson-ccim.net](mailto:brad@bradjohnson-ccim.net)

**Becky Call**  
RE/MAX Results  
400 E McBee Avenue, Ste 112  
Greenville, SC 29601  
585-409-1869  
[becky@bradjohnson-ccim.net](mailto:becky@bradjohnson-ccim.net)



All information deemed to be reliable, but not guaranteed. It is your responsibility to confirm any and all information

**A Better Way in**  
Commercial Real Estate