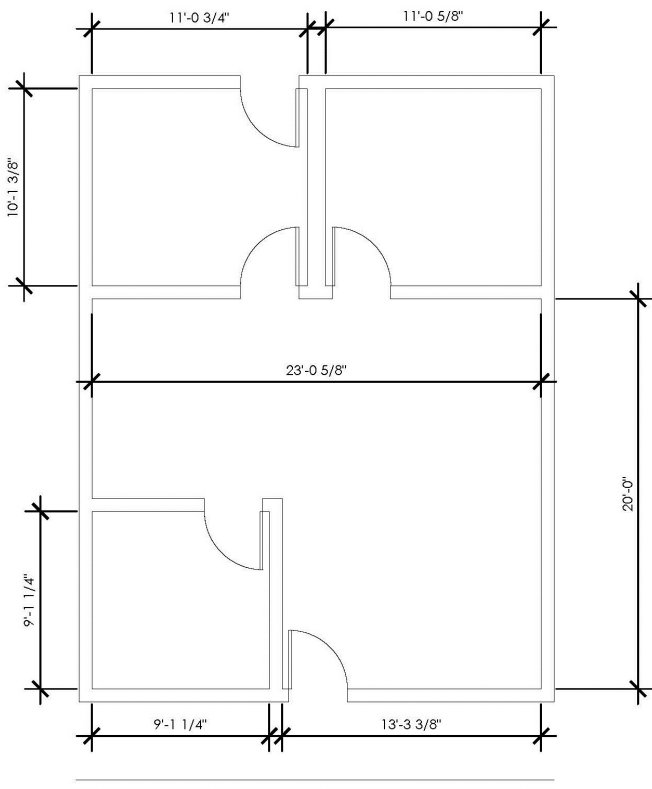


[4455 Morena Blvd # 104 San Diego



PROPERTY HIGHLIGHTS



TYPE:	Professional Office
LEASE RATE:	\$2.00 Gross + E
LEASE TERM:	1-5 years
SIZE:	778 Sq ft
BUILDOUT:	Two Window lined Offices, Conference Room & Open Office
TOUR:	Call Broker to Schedule
HIGHLIGHTS:	<ul style="list-style-type: none"> • Easy of Access to 5 & 52 • Centrally located • Common Area Upgrades • Professional Office Environment • Direct Access to Parking Lot