

FOR LEASE 500 BOYLSTON

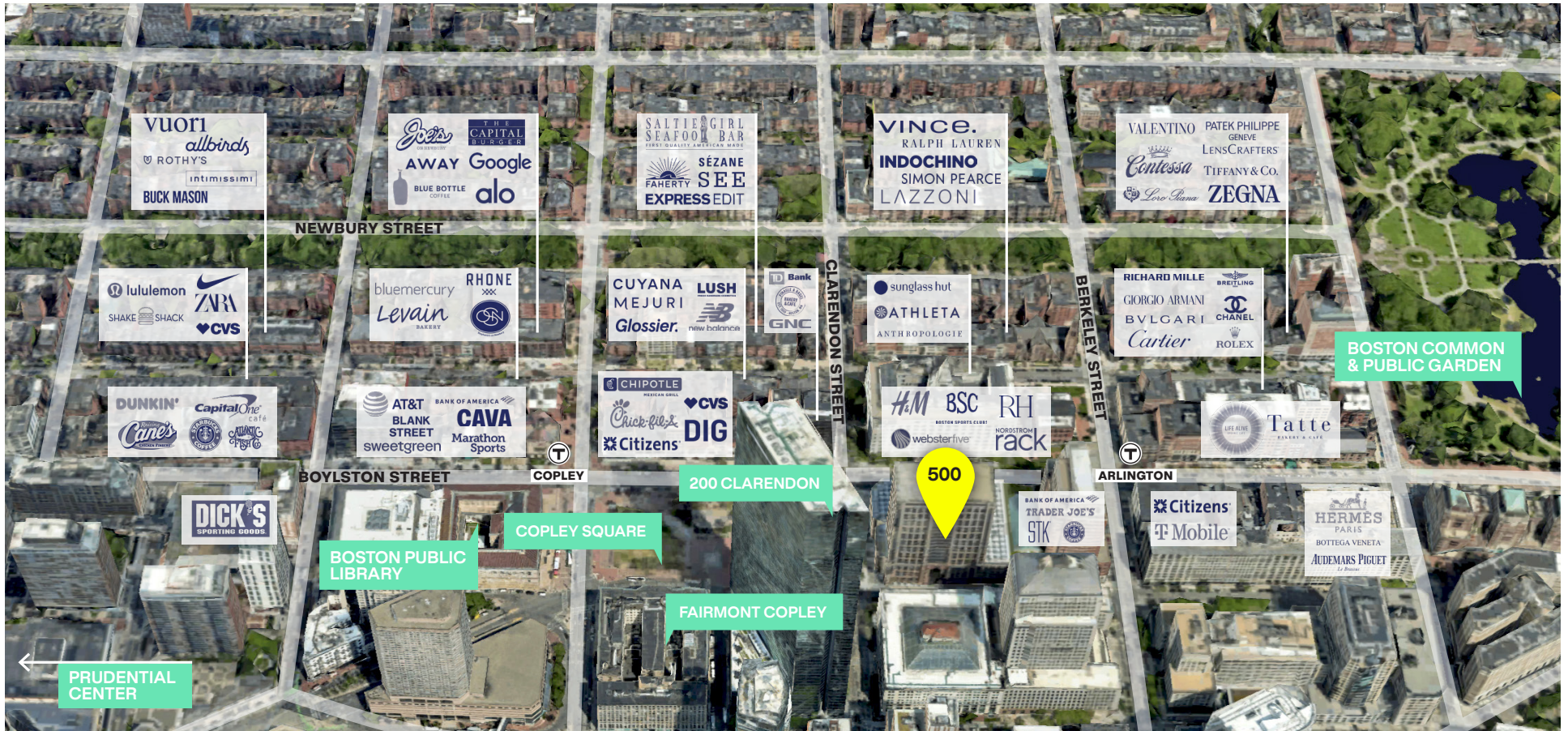
BOSTON, MA

4,612 SF OPPORTUNITY



 **DISTRICT**
REAL ESTATE ADVISORS

OXFORD



LOCATION

The Back Bay submarket is one of the most active retail areas in the city and consists mainly of two one-way streets, Boylston Street and Newbury Street along with two of Boston's only indoor malls – Prudential Center and Copley Place. The area continues to be the dominant retail area primarily due to the existing retail co-tenancy, high office density and occupancy, significant tourism draw, access to public transportation and strong residential population. Boylston Street continues to be a desirable location for food and

beverage tenants, financial institutions and QSR concepts. 500 Boylston, which is situated at the corner of Boylston and Clarendon Street, resides as one of the most preeminent retail corners in the entire city. Newbury Street continues to be the focus of new retail brands entering the market (apparel, jewelry, direct to consumer etc). Over the past 12-18 months the vacancy rate has dropped significantly and the demand for space remains strong.



BACK BAY SPECS

WITHIN 1 MILE RADIUS

\$2.5 BILLION

RETAIL EXPENDITURE

\$202,000

AVERAGE HOUSEHOLD INCOME

90,879

RESIDENTS

12,000+

BUSINESSES

1,000

UNDERGROUND PARKING SPOTS

OFFICE TENANTS

 wayfair

 DRAFT
KINGS

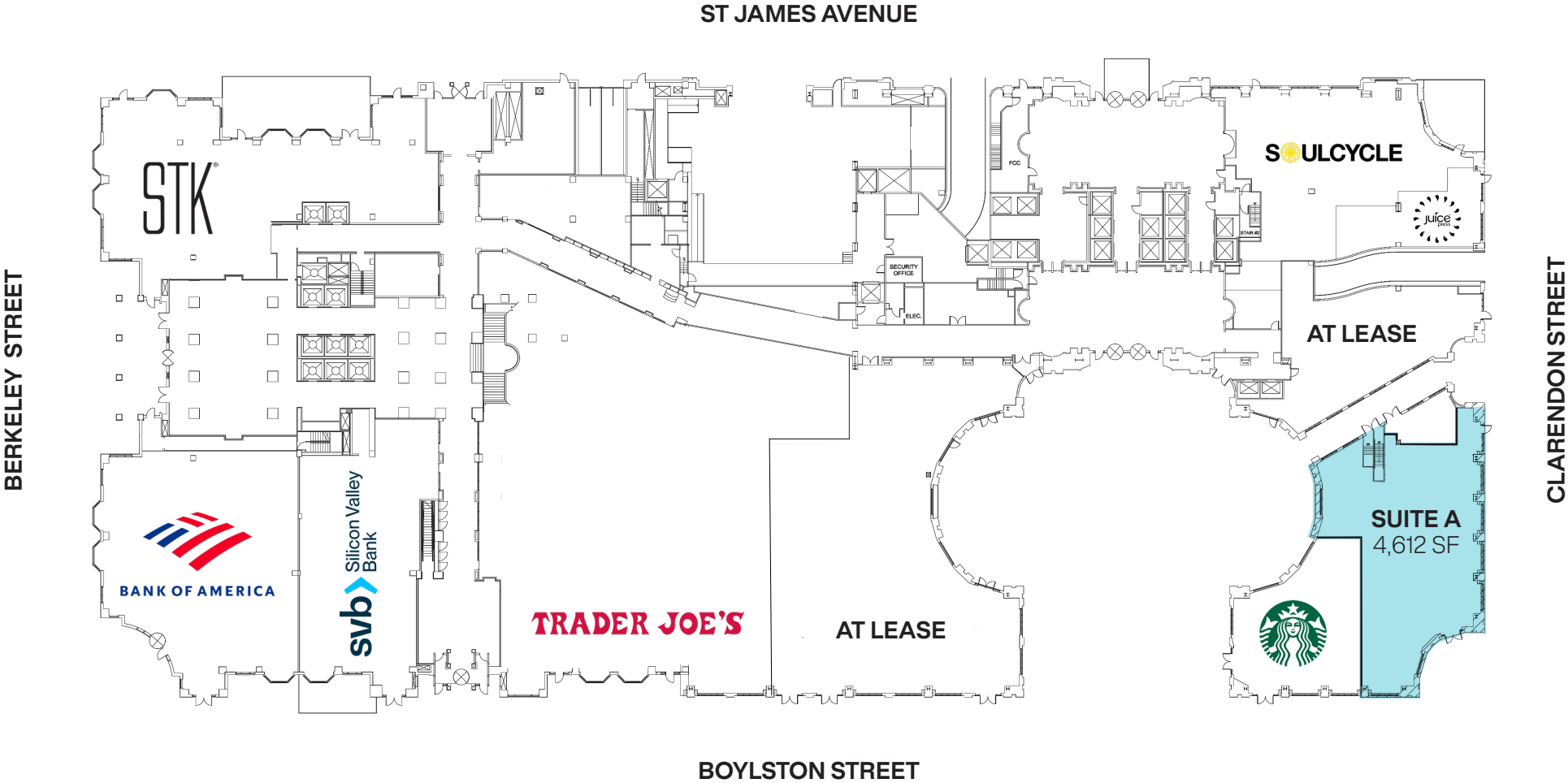
 SUMMIT
PARTNERS

 salesforce

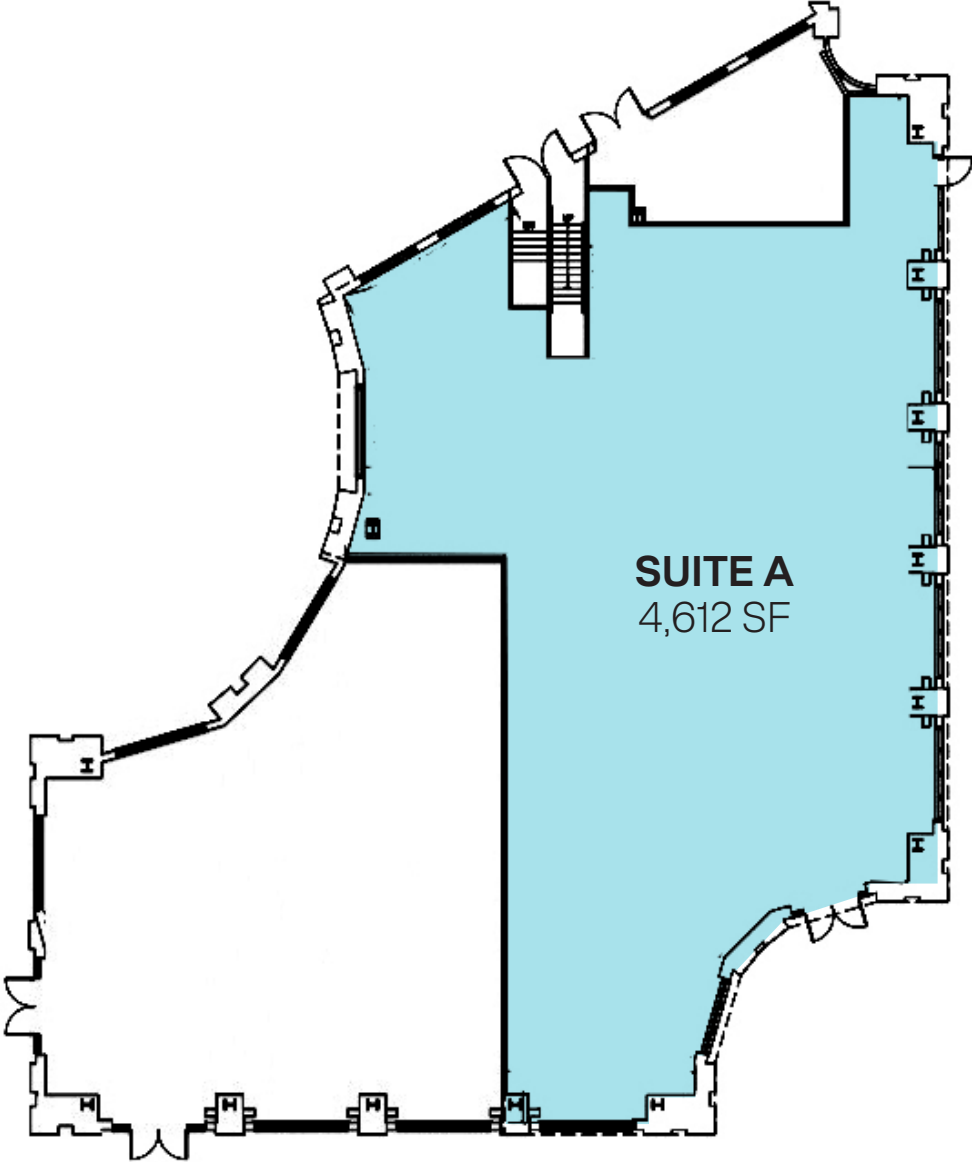
 Cooley

 Skadden

RETAIL MAP



FLOOR PLAN



SUITE A
4,612 SF

135 FT.
OF RETAIL FRONTAGE

15 FT.
HIGH CEILINGS

NEIGHBORS





FIND YOUR DISTRICT



CHRISTOPHER MEARN

Principal

617.595.1544
chris@districtadvisors.com



BECK DANGLER

Vice President

315.723.8511
beck@districtadvisors.com



800 Boylston Street
Suite 420, Boston MA 02199

857.284.7971
districtadvisors.com