



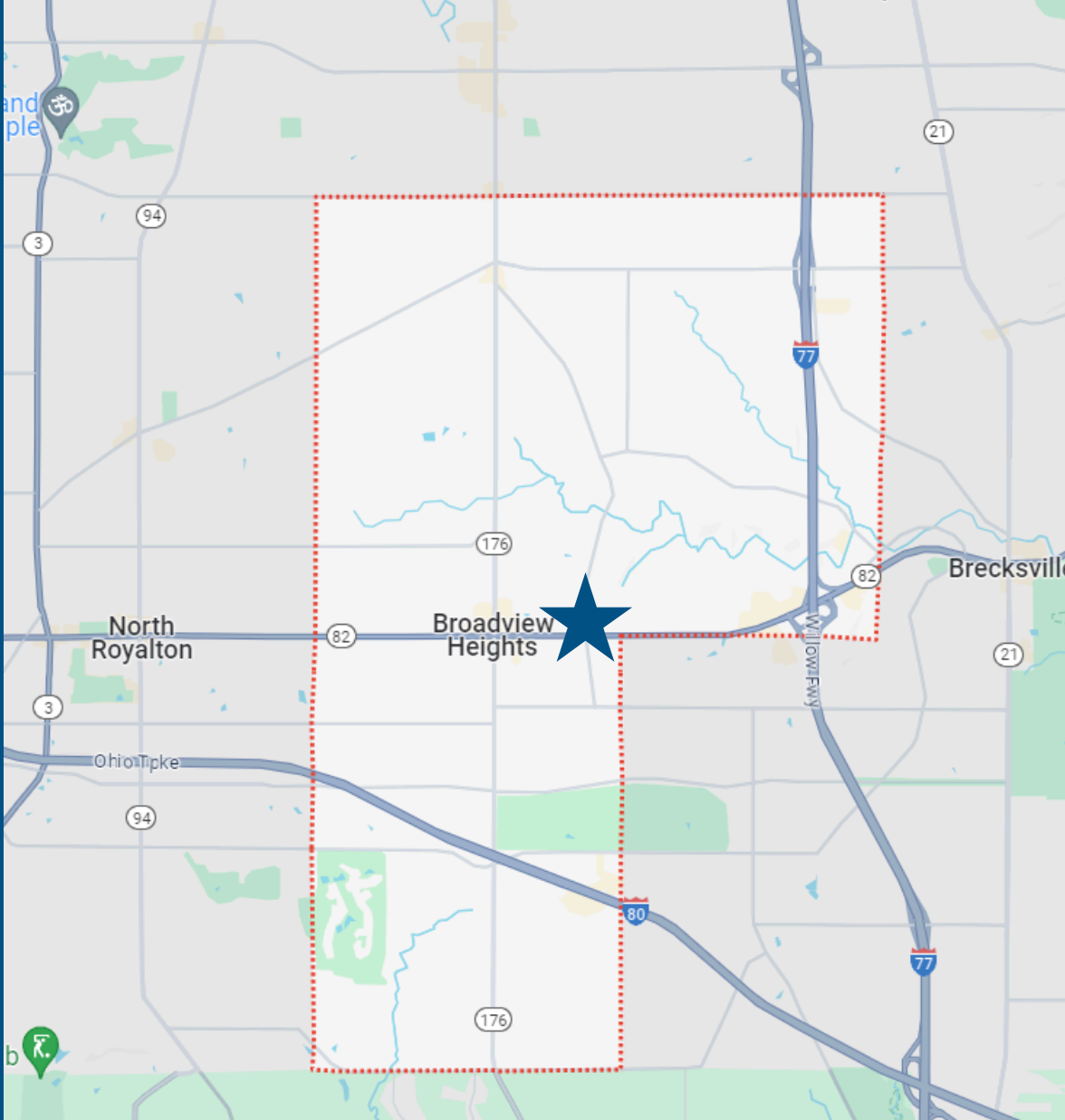
# 3,400 sq/ft Office For Lease

1929 E Royalton Rd. Broadview Heights OH 44147

# 1929 E. ROYALTON ROAD BROADVIEW HEIGHTS, OH

## HIGHLIGHTS

- 3,400 sq/ft of private office with 16 dedicated parking spaces
- Lobby, 7 private offices, conference room, kitchenette, private restrooms
- Sigange on Royalton Rd.  
(23,500 vehicles per day)
- Zoned C-6, which permits a variety of uses, including executive & financial offices, medical offices, more
- Convenient access to I-77 (over 60,000 vehicles per day)
- Household income of nearly \$200,000 within a 1 mile radius of site
- The city of Broadview Heights has a thriving business community with a mix of large retailers, local establishments and successful restaurants



**87,306**  
Population  
(2024 | 5 mile)



**87,306**  
Households  
(2024 | 5 mile)

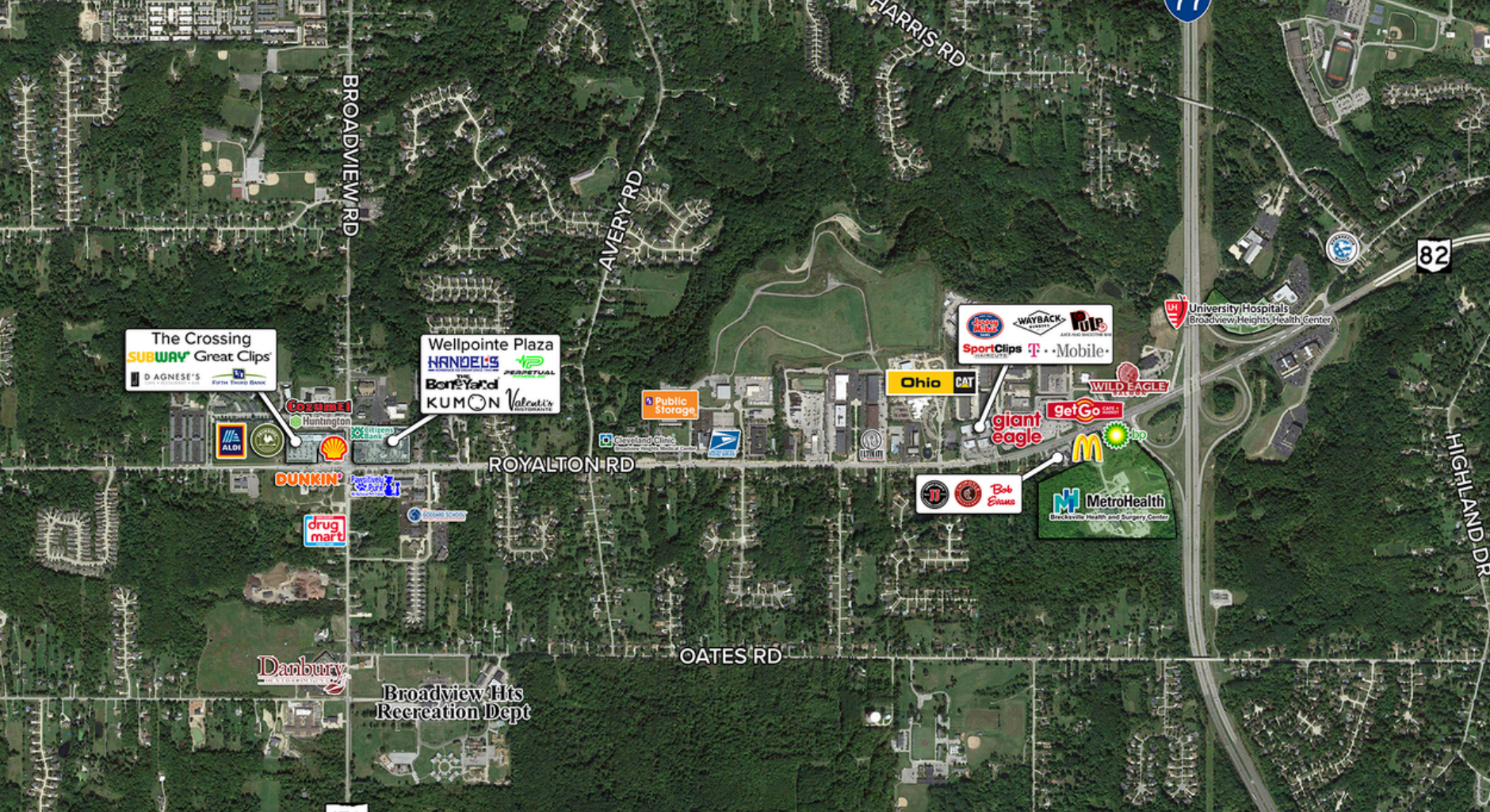


**\$97,312**  
Med. House Income  
(2024 | 5 mile)



**31,227**  
Total Employees  
(2024 | 5 mile)





# 3,400 sq/ft Office For Lease

1929 E. ROYALTON ROAD, BROADVIEW HEIGHTS, OH 44147

**RICH GANIM**

Lead Listing Specialist, Team Leader

[rich@theganimgroup.com](mailto:rich@theganimgroup.com)

440-781-1374

**GANIM REAL ESTATE**

9238 Broadview Rd. Broadview Hts, OH

[info@theganimgroup.com](mailto:info@theganimgroup.com)

