

# 19095 W 151ST TERR

OLATHE, KS 66062



# REECE

COMMERCIAL REAL ESTATE

a Berkshire Hathaway Affiliate

**FOR SALE | C-3 ZONING**



**JIM  
THOME**



913.548.8700



JTHOME@REECECOMMERCIAL.COM

**\$1,015,400 (\$21 PSF)**

- 1.2 ACRE LOT - CURRENTLY AG - 48,352 SQFT
- C-3 ZONING - RETAIL
- HALL BUSINESS PARK
- GREAT VISIBILITY FROM 151ST STREET
- NEXT TO FREDDY'S & NEW DUTCH BROS COFFEE
- 1 BLOCK FROM GARMIN CAMPUS

The information above has been obtained from sources believed reliable. While we do not doubt its accuracy we have not verified it and make no guarantee, warranty or representation about it. It is your responsibility to independently confirm its accuracy and completeness. Any projections, opinions, assumptions, or estimates used are for example only and do not represent the current or future performance of the property. You and your advisors should conduct a careful, independent investigation of the property to determine to your satisfaction the suitability of the property for your needs. © 2020

# 19095 W 151ST TERR

OLATHE, KS 66062



# REECE

COMMERCIAL REAL ESTATE

a Berkshire Hathaway Affiliate



**JIM  
THOME**



913.548.8700



JTHOME@REECECOMMERCIAL.COM

The information above has been obtained from sources believed reliable. While we do not doubt its accuracy we have not verified it and make no guarantee, warranty or representation about it. It is your responsibility to independently confirm its accuracy and completeness. Any projections, opinions, assumptions, or estimates used are for example only and do not represent the current or future performance of the property. You and your advisors should conduct a careful, independent investigation of the property to determine to your satisfaction the suitability of the property for your needs. © 2020

# 19095 W 151ST TERR

OLATHE, KS 66062



# REECE

COMMERCIAL REAL ESTATE

a Berkshire Hathaway Affiliate



**JIM  
THOME**



913.548.8700



JTHOME@REECECOMMERCIAL.COM

The information above has been obtained from sources believed reliable. While we do not doubt its accuracy we have not verified it and make no guarantee, warranty or representation about it. It is your responsibility to independently confirm its accuracy and completeness. Any projections, opinions, assumptions, or estimates used are for example only and do not represent the current or future performance of the property. You and your advisors should conduct a careful, independent investigation of the property to determine to your satisfaction the suitability of the property for your needs. © 2020

# 19095 W 151ST TERR

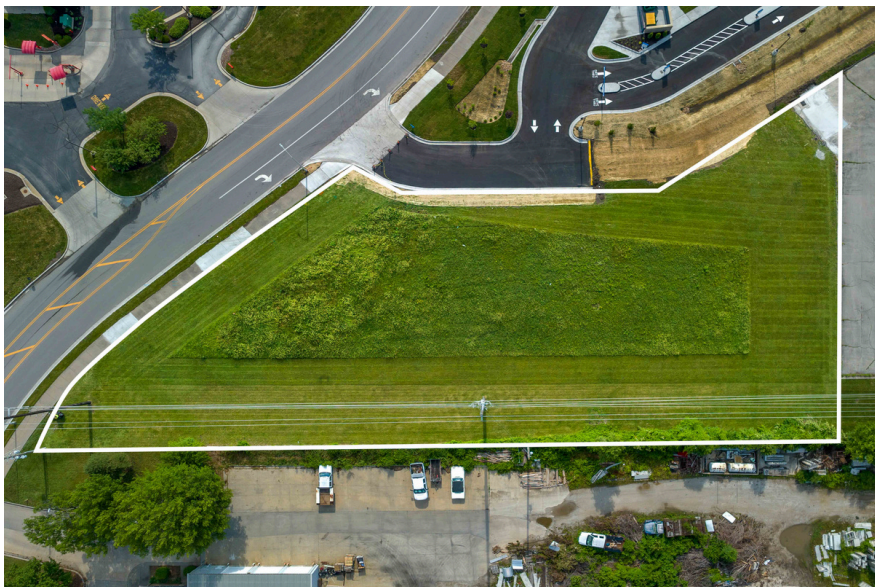
OLATHE, KS 66062



# REECE

COMMERCIAL REAL ESTATE

a Berkshire Hathaway Affiliate



**JIM  
THOME**



913.548.8700



JTHOME@REECECOMMERCIAL.COM

The information above has been obtained from sources believed reliable. While we do not doubt its accuracy we have not verified it and make no guarantee, warranty or representation about it. It is your responsibility to independently confirm its accuracy and completeness. Any projections, opinions, assumptions, or estimates used are for example only and do not represent the current or future performance of the property. You and your advisors should conduct a careful, independent investigation of the property to determine to your satisfaction the suitability of the property for your needs. © 2020

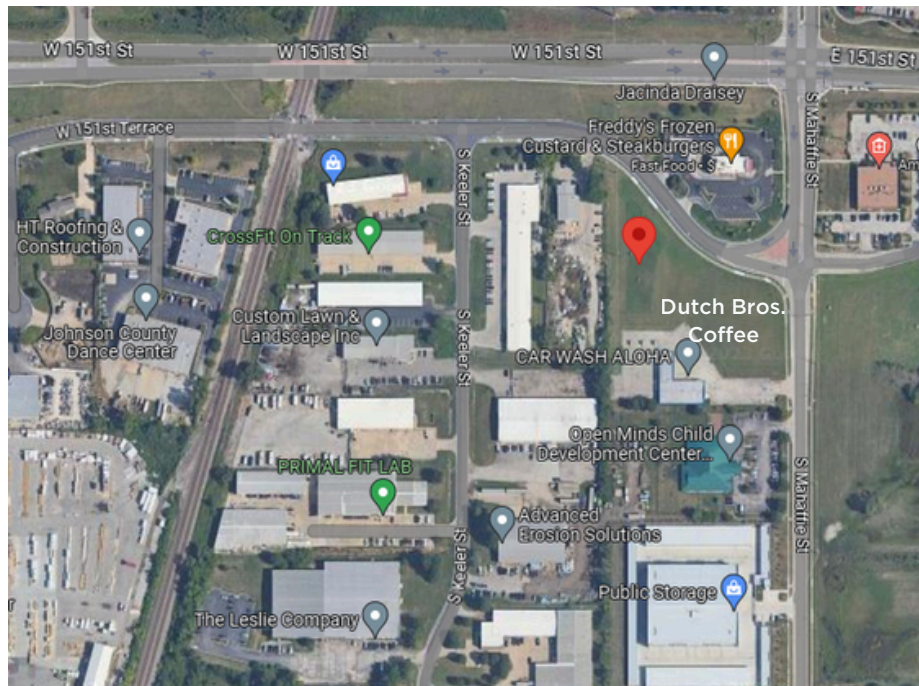
# 19095 W 151ST TERR

OLATHE, KS 66062



**REECE**  
COMMERCIAL REAL ESTATE

a Berkshire Hathaway Affiliate



**JIM  
THOME**



913.548.8700



JTHOME@REECECOMMERCIAL.COM

The information above has been obtained from sources believed reliable. While we do not doubt its accuracy we have not verified it and make no guarantee, warranty or representation about it. It is your responsibility to independently confirm its accuracy and completeness. Any projections, opinions, assumptions, or estimates used are for example only and do not represent the current or future performance of the property. You and your advisors should conduct a careful, independent investigation of the property to determine to your satisfaction the suitability of the property for your needs. © 2020