

Broomfield Flex Spaces for Lease

555 & 557 BURBANK ST | BROOMFIELD, CO

557 BURBANK UNIT A: 950 SF

557 BURBANK UNIT H: 1,400 SF

555 BURBANK UNIT K: 1,800 SF

Rate: \$15.00/SF + \$7.42 NNN

Available: Now

FLEX THOSE FEELS

Get ready for a whole lot of good juju, the kind you can't just buy off the shelf... but you sure can lease it! These warehouse spaces are not only minutes away from Boulder's feel-good vibes, but they also come with some seriously good-vibe neighbors. So, why not hop on this wave of positivity and bring your vision to life right here? Let's keep this good thing going!

PROPERTY HIGHLIGHTS

- Easy access to HWY 287 and only 0.5 miles from US 36
- Unit K features Temperature controlled warehouse & office space
- 10' Drive-In Doors, three phase power, ventilation access



[CLICK HERE](#)
for A virtual tour

[CLICK HERE](#)
for H virtual tour

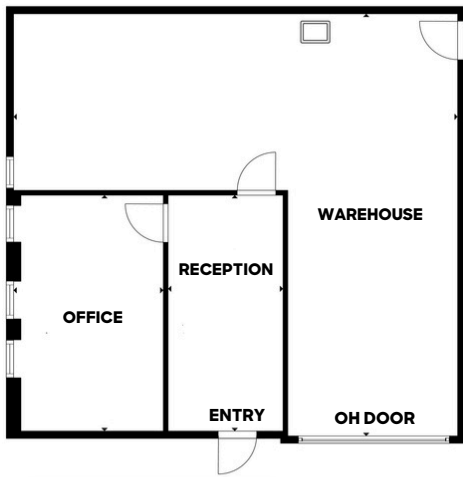
[CLICK HERE](#)
for K virtual tour



LEARN MORE ABOUT THIS PROPERTY

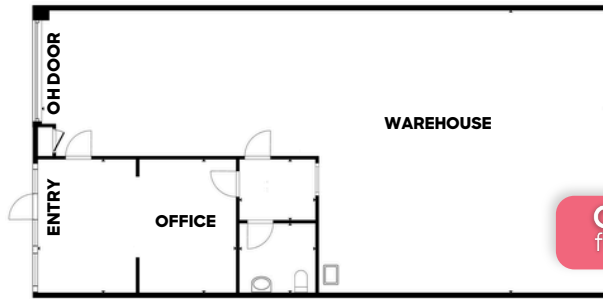
MarketRealEstate.com

UNIT A



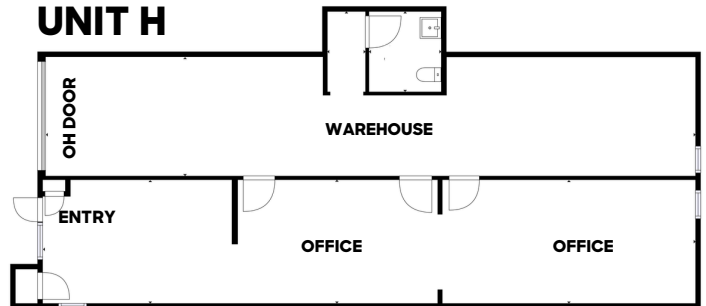
[CLICK HERE for A virtual tour](#)

UNIT K



[CLICK HERE for K virtual tour](#)

UNIT H



[CLICK HERE for H virtual tour](#)



LEARN MORE ABOUT THIS PROPERTY
MarketRealEstate.com

RACHEL ROHRIG
 303 444 4910
 Rachel@MarketBoulder.com

BRITTANY BOUDREAU
 303 444 0566
 Brittany@MarketBoulder.com

