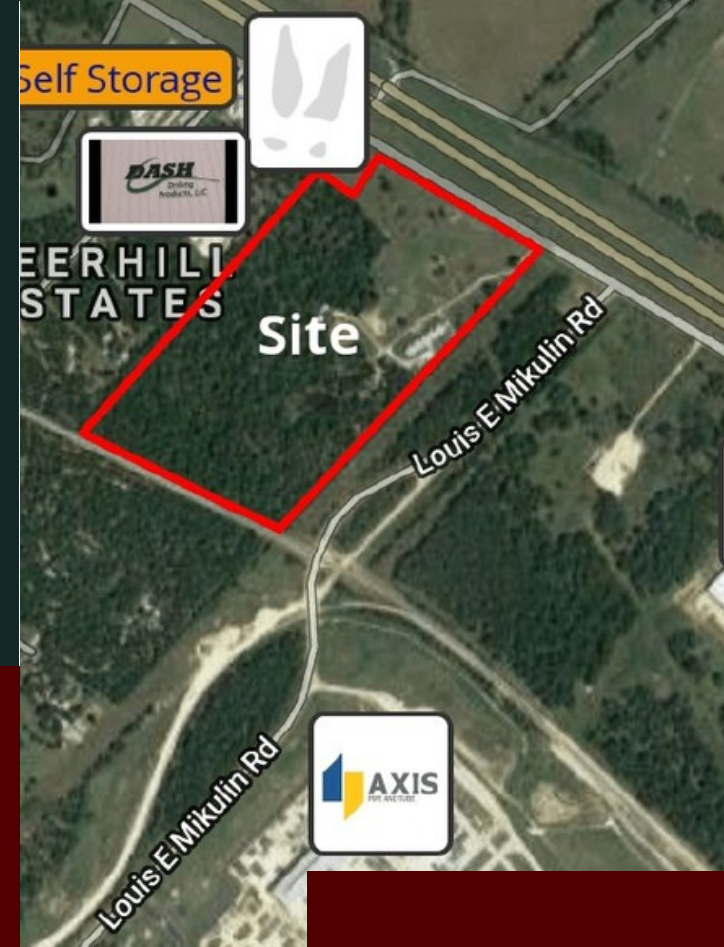


## ABOUT PREMIER BUSINESS PARK

Discover the perfect location for your business with this Built-to-Suite property offering unparalleled customization options to meet your unique needs.

- ✓ Tailor the space to your exact specifications, ensuring it aligns seamlessly with your business requirements.
- ✓ 1 - 20 Acre Plots Available



## FINDING THE PERFECT SPACE FOR YOUR BUSINESS



Commercial  
Property Manager

**EMILY S**

Get In Touch Now : +1 (979)595-4293

### CONTACT US :



+1 (979)595-4293



8733 N. State Highway 6  
Bryan, TX 77807



emily@wasteequipmenttrs.com

## Premier Business Park

8733 N. State Highway 6  
Bryan, Texas  
77807

## ABOUT THE PROPERTY

- Enjoy the advantage of a prime location with direct access to Highway 6.
- Benefit from high visibility along the bustling Highway 6, capturing the attention of passing traffic and potential customers



## BUILD-TO-SUIT

The direct connection to the highway ensures convenient access for both customers and suppliers, making logistics more efficient.

## THE FEATURES

- Built-to-Suite Flexibility ✓
- Strategic Location ✓
- High Visibility ✓
- Convenient Access ✓
- Fiber Internet ✓
- Septic ✓
- 3 Phase Power Available ✓
- 4" Water Main ✓

## CONTACT US FOR MORE INFORMATION

Get in touch with us today to talk about the diverse range of spaces we have available to suit your business needs. Our team is eager to explore how we can tailor a space to enhance your business operations.



## WE BUILD SPACES THAT BUILD BUSINESSES