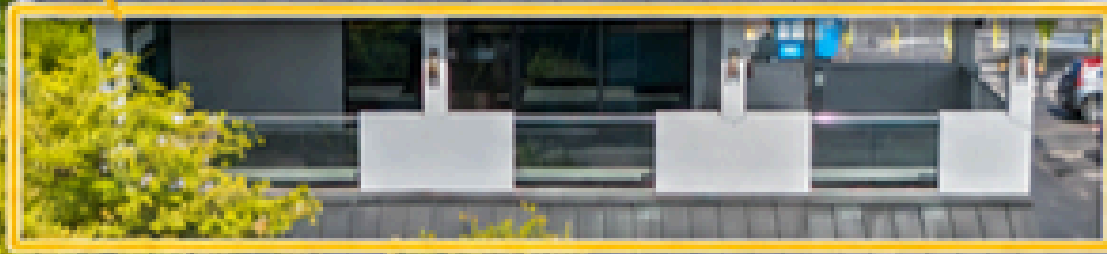


SECOND FLOOR
AVAILABLE



WILTON DRIVE

SECOND GENERATION BAR
1,934 SQUARE FEET + PATIO

NATIVE
REALTY.

OVERVIEW



Address	2010 Wilton Drive (2 nd Floor), Wilton Manors, Florida 33305
Size	1,934 Square Feet (Includes Covered Patio)
Price	\$50.00/SF NNN (est. \$15/SF)
Zoning	A&E District
Parking	Ample Street Parking + Shared On-Site Parking

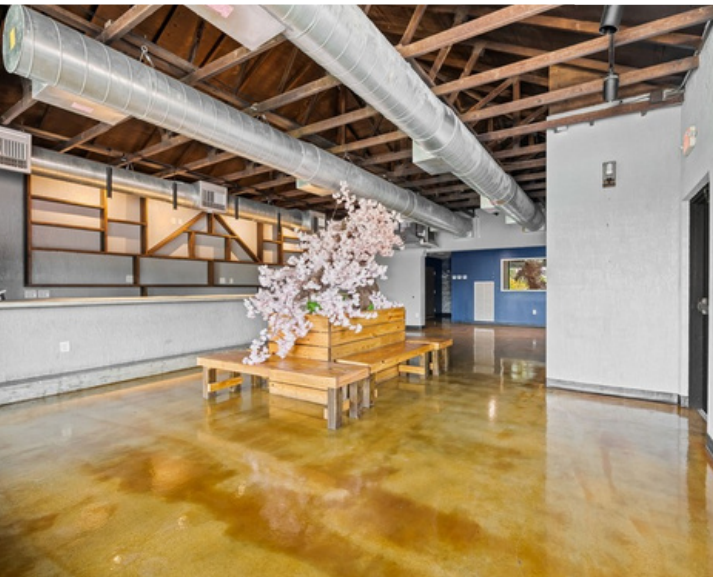
SOUGHT AFTER WILTON DRIVE LOCATION



Wilton Drive - One of South Florida's most vibrant and recognizable entertainment districts, anchored by a dynamic mix of restaurants, nightlife, boutique retail, and community-driven businesses. Known for its highly walkable corridor and strong local identity, Wilton Drive attracts residents and visitors seeking unique dining, social, and lifestyle experiences. Centrally located minutes from Downtown Fort Lauderdale, Flagler Village, and the beaches, Wilton Manors offers exceptional connectivity within a thriving urban neighborhood.



SECOND GENERATION BAR



SECOND GENERATION BAR





OUTDOOR ACTIVATION



AI GENERATED RENDERING OF OUTDOOR ACTIVATION



INDOOR/OUTDOOR BAR



AI GENERATED RENDERING OF INDOOR/OUTDOOR BAR



WALKABLE + STEPS TO EVERYTHING ON THE DRIVE.

noMANORS
bar & lounge

HUNTERS
NIGHTCLUBS
WILTON MANORS

GYM
SPORTS BAR



SUSHI  SONG

 **The West End**
LOUNGE



SURROUND YOUR BUSINESS
WITH SOME OF WILTON
DRIVE'S MOST EXCITING LIST
OF CURATED TENANTS AND
PLUG INTO ONE OF WILTON
MANORS MOST DYNAMIC
NEIGHBORHOODS.



THE BEAN
♦ ESPRESSO BAR ♦

DRYINK



APT
9f



TULLIO'S
TACOS & TEQUILA

PRIDE LAW



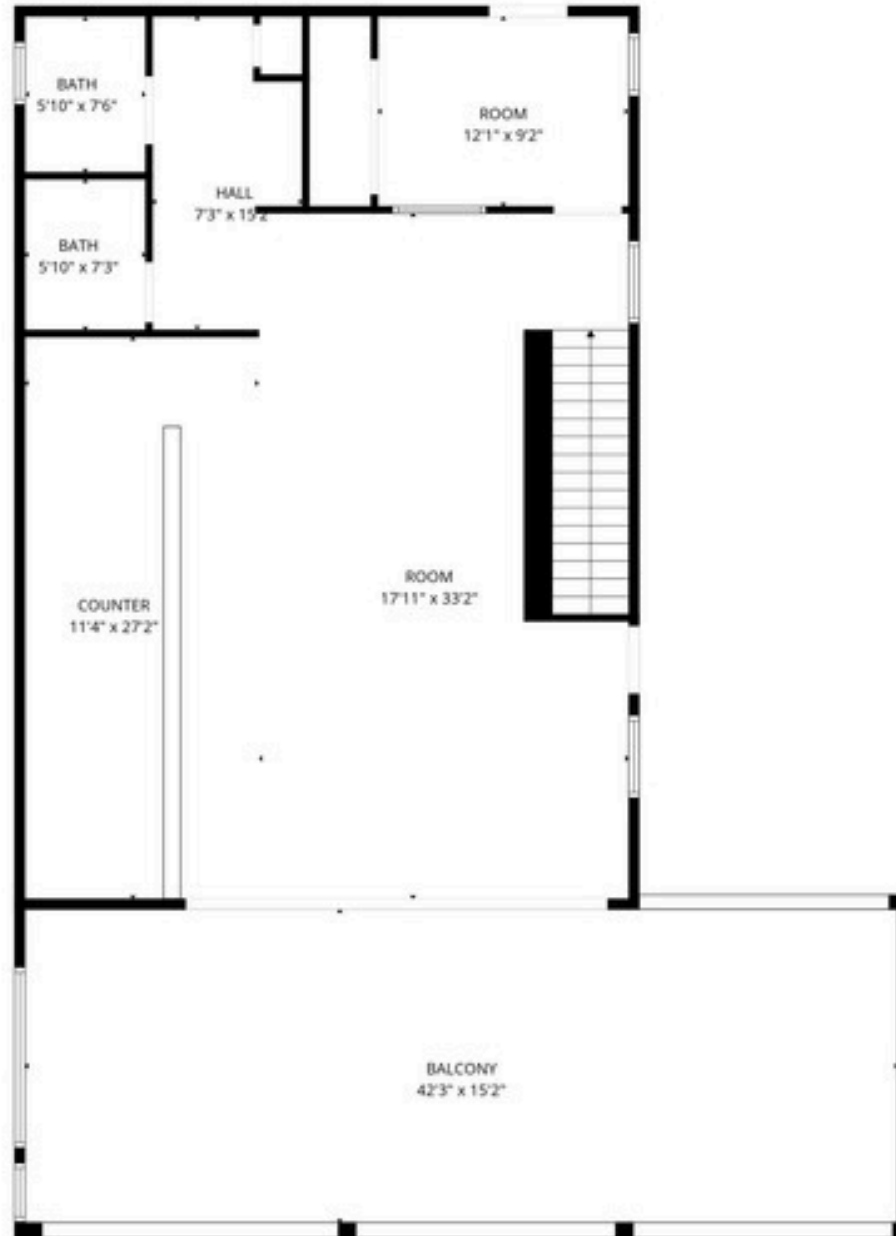
JAVA JOES
• COFFEE HOUSE •

 **PRIDE
FACTORY**

**BAGELS
& CO**



FLOOR PLAN



CONTACT



KALEY TUNING

kt@nativerealty.com
(954) 871 - 8927

Native Realty Co. is a Licensed Real Estate Broker. This offering is subject to errors, omissions and change of price. As such no warranty or representation, expressed or implied, is made to the accuracy or completeness of the information contained herein. Any reliance on this information is solely at your own risk.