

FOR LEASE

BELL TOWER OFFICES
2627 WEST FLORIDA AVENUE
HEMET, CA



JANET F. KRAMER, JD, CCIM
951.600.8634 x702
janetk@svn.com
CalDRE #01351570

PROPERTY SUMMARY

BELL TOWER OFFICES | 2627 WEST FLORIDA AVENUE | HEMET, CA



TENANT ROSTER		
SUITE	TENANT	SF
100/101	BEAUTY SCHOOL	±9,896
102	VACANT	±1,377
107/108	VACANT	±1,728
109	VACANT	±866
200/201	VACANT	±2,653
202	VACANT	±882
203	AUTO REGISTRATION	±496
204	ENGINEERING	±490
205	REALTOR	±473
206	VACANT	±408
207/208	VACANT	±2,017



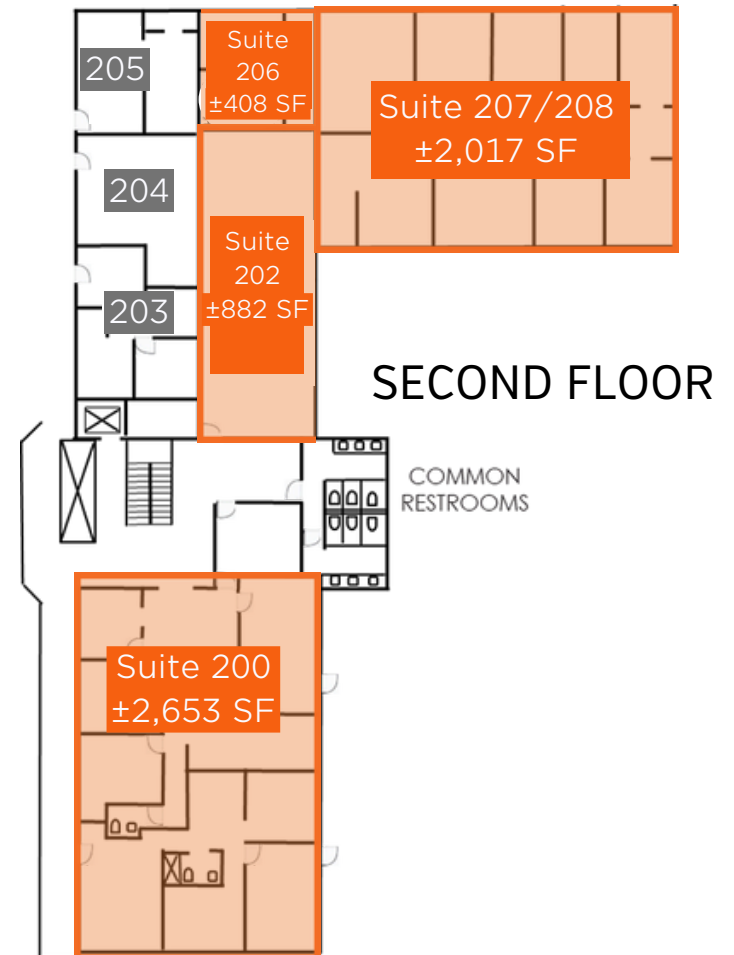
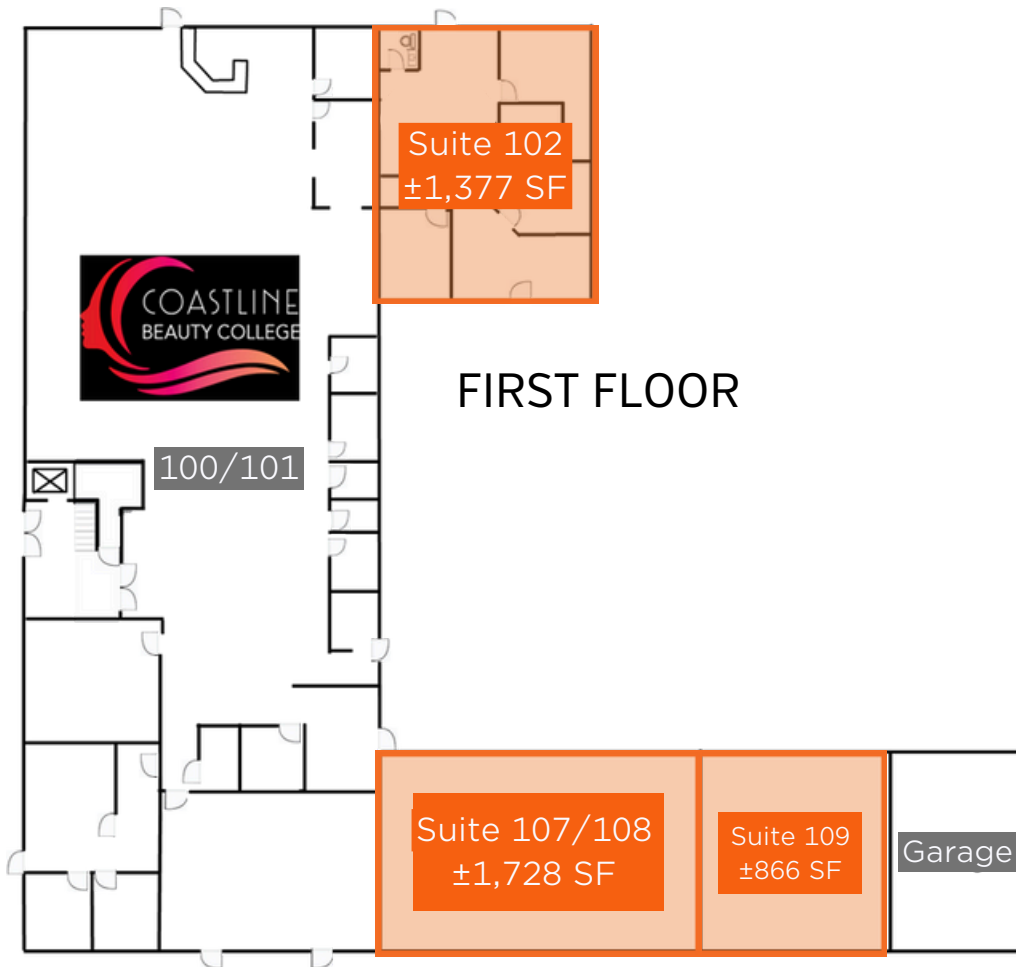
JANET F. KRAMER, JD, CCIM
951.600.8634 x702
janetk@svn.com
CaIDRE #01351570



This statement with the information it contains is given with the understanding that negotiations relating to the purchase, renting or leasing of this property shall be conducted through this office. The information while not guaranteed has been secured from sources we believe to be reliable however, it is up to the buyer, tenant or landlord to verify the information and conduct appropriate due diligence. SVN | Insight, 2025

PROPERTY SUMMARY

BELL TOWER OFFICES | 2627 WEST FLORIDA AVENUE | HEMET, CA



JANET F. KRAMER, JD, CCIM
951.600.8634 x702
janetk@svn.com
CaIDRE #01351570



RETAILER MAP

BELL TOWER OFFICES | 2627 WEST FLORIDA AVENUE | HEMET, CA



JANET F. KRAMER, JD, CCIM
951.600.8634 x702
janetk@svn.com
CaIDRE #01351570



DEMOGRAPHICS

BELL TOWER OFFICES | 2627 WEST FLORIDA AVENUE | HEMET, CA



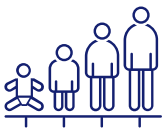
- State California
- County Riverside
- Mayor Jackie Peterson
- Website hemetca.gov

POPULATION

Source: ESRI



100,936
POPULATION

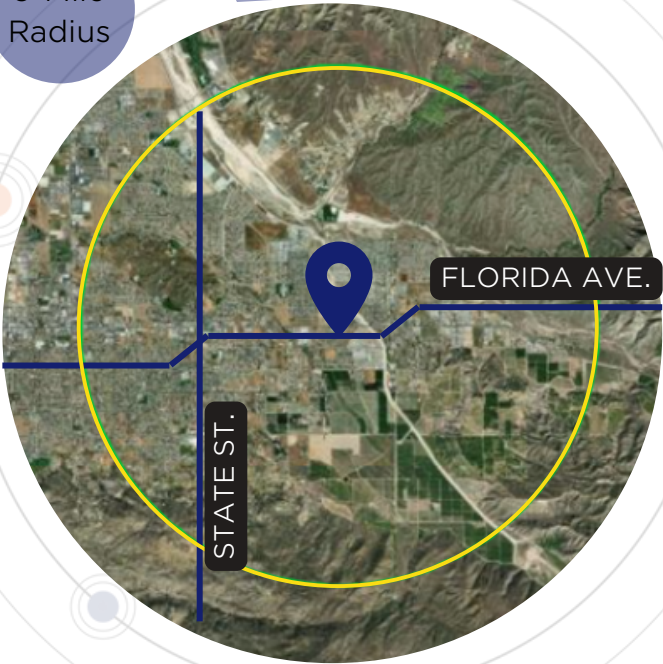


38.9
MEDIAN AGE



35,494
HOUSEHOLDS

3-Mile
Radius



EMPLOYMENT



43%
WHITE COLLAR



33%
BLUE COLLAR



24%
SERVICES



10%
UNEMPLOYMENT RATE

EDUCATION



34%
HIGH SCHOOL
GRADUATE



32%
SOME COLLEGE



17%
BACHELORS/GRAD/
PROF DEGREE

INCOME



\$58,958
MEDIAN HOUSEHOLD
INCOME



\$28,090
PER CAPITA
INCOME



\$135,206
MEDIAN NET
WORTH

JANET F. KRAMER, JD, CCIM
951.600.8634 x702
janetk@svn.com
CalDRE #01351570

