

SUBLEASE AVAILABLE

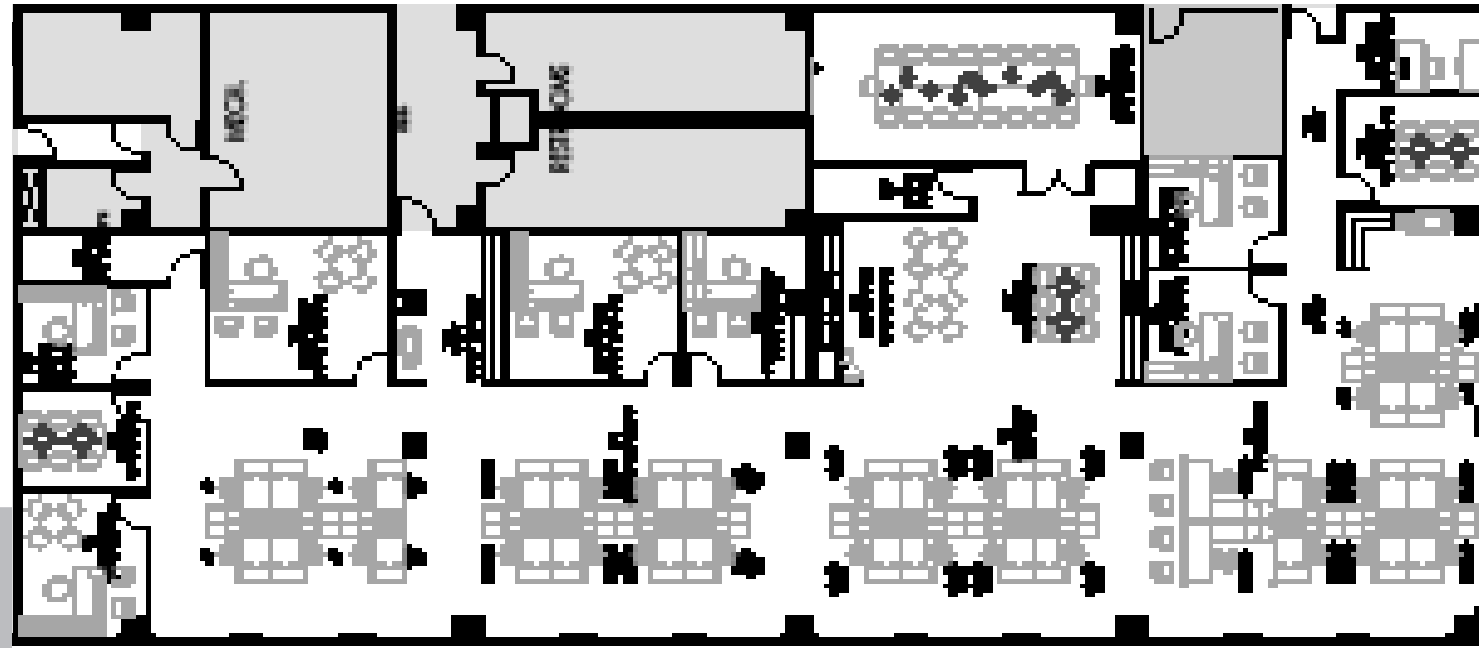


19111 N Dallas Pky, Dallas, TX 75287



INTERCHANGE OFFICE CENTER

FLOORPLAN



SPACE HIGHLIGHTS

- ▶ Premises: Suite 170 - 8,112 SF
- ▶ Term: February 28, 2027
- ▶ Availability: Immediately
- ▶ FF&E Included





BROKER CONTACT

MaryMichael McCartin
+ 1 214 458 5535
marymichael.mccartin@jll.com