

MRG

For Lease

441E Tremont Ave

Full Building For Lease

5,360 sq ft | 441 E Tremont Ave | Bronx, NY 10457

BRONX PULMONARY CENTER
PULMONARY, ASTHMA
& SLEEPING DISORDERS

441 E.

718-583-9240

441 E.

PROPERTY DETAILS



OVERVIEW

- **Address:** 441 E Tremont Ave Bronx, NY 10457
- **Cross Streets:** Washington and Park ave
- **Neighborhood:** Bronx

SPACE DETAILS

- **Size:** 5,360 sq ft
- **Frontage:** 110 ft
- **Ceiling Height:** 14 ft on the ground floor, 12 ft on the 2nd floor

HIGHLIGHTS

- Bi-level retail and office
- ADA accessible
- Wrap around frontage

TRANSPORTATION

- 🚆 3rd Avenue – 138th Street (6 Train), 5–7 min walk, 0.3 mi
- 🚌 Bx15 at the corner, Bx5, Q50, Bx23 within 1–3 min walk
- ✈️ LaGuardia (LGA): 30 min drive – JFK: 25 min drive

DEMOGRAPHICS

- **Residential Population:** 155,954
- **Mean Household Income:** \$107,700
- **Daytime Population:** 160,000

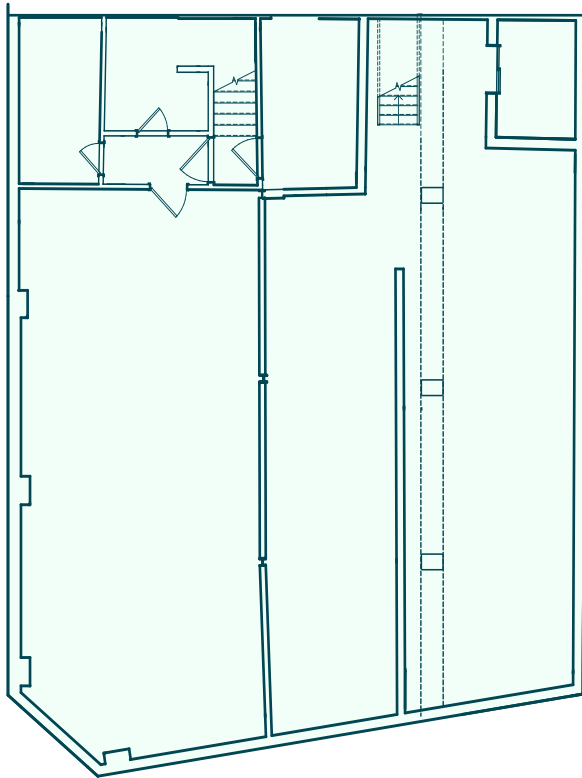
NEIGHBORS

CTown Supermarket, CVS Pharmacy, Metro by T-Mobile, Door Depot, Tremont Discount Inc, Pizzeria San Diego, Praga Lounge, Kennedy

FLOOR PLANS

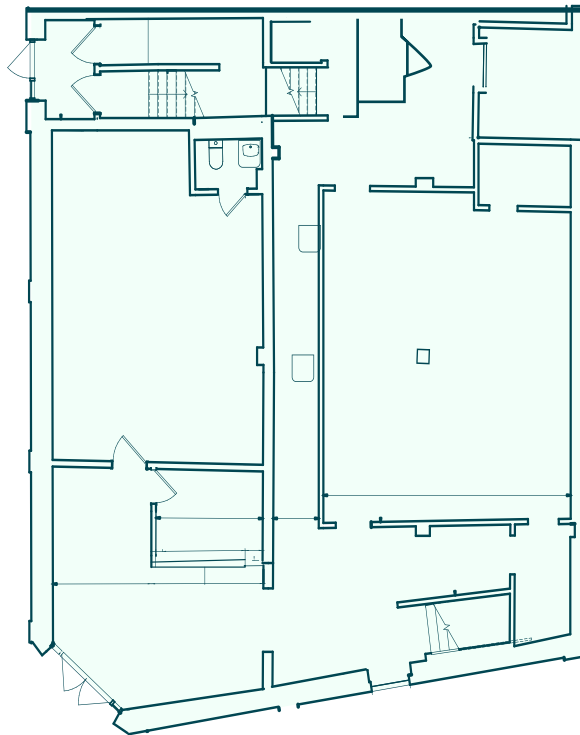
2ND FLOOR

2,680 sq ft



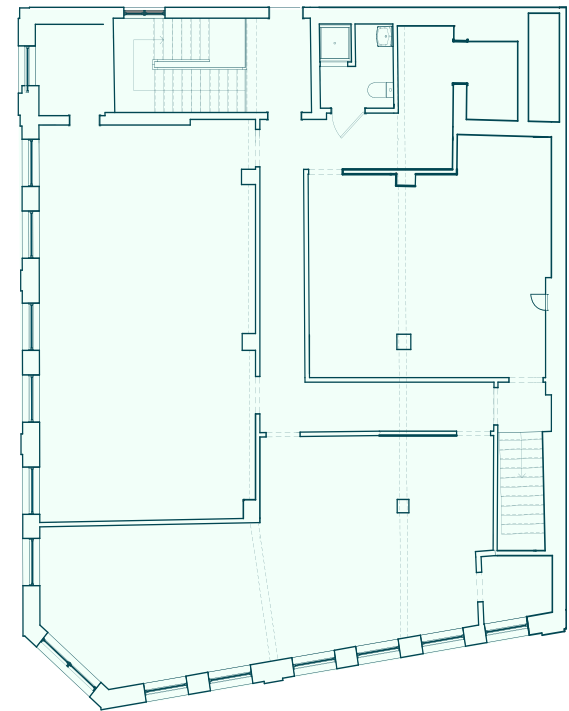
GROUND FLOOR

4942.49 sq ft



BASEMENT

2840.05 sq ft



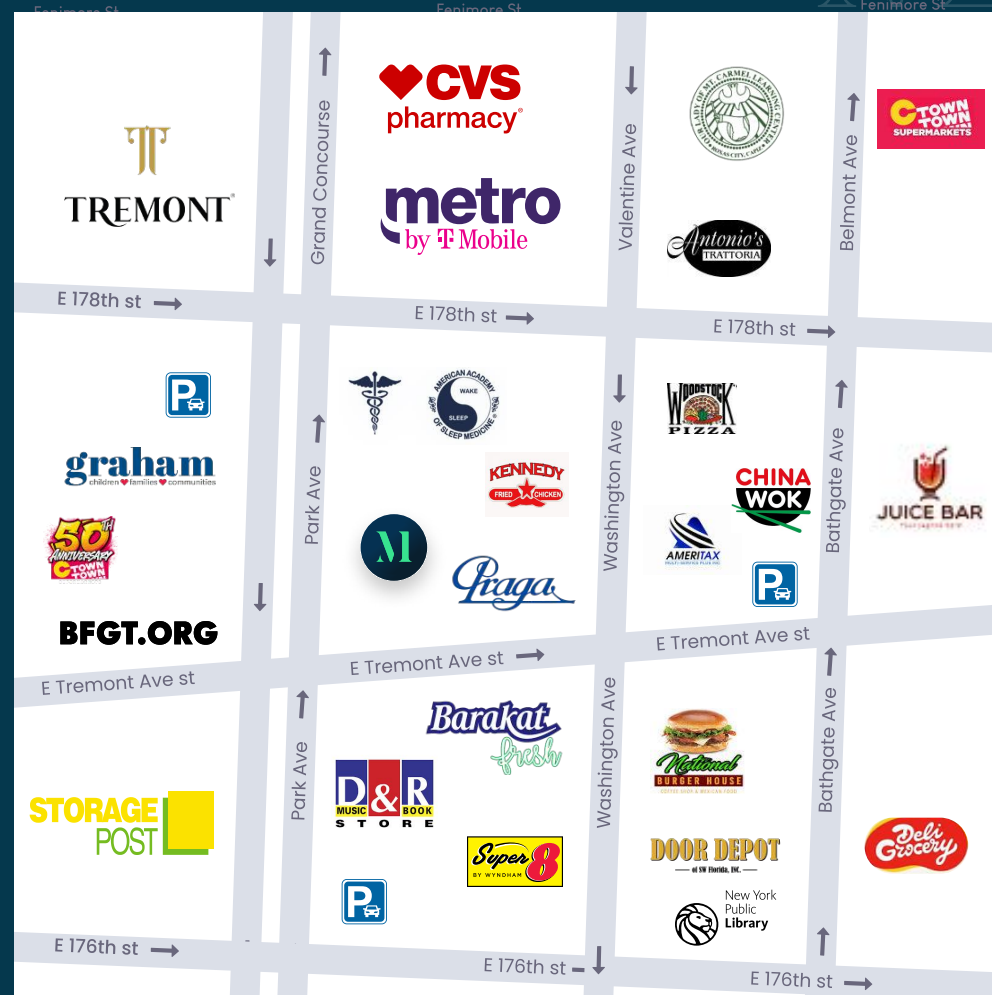
441 E Tremont Ave, Bronx, NY 10457

MRG

441 E Tremont Ave Bronx, NY 10457

FOR MORE INFORMATION
PLEASE CONTACT:

ZACK SETTON
212-314-4684 Ext.106
Zack@mrgny.com



Full Building For Lease For Lease