



## **APEX PARK**

**970,000 SF INDUSTRIAL PARK  
OPPORTUNITY**

**62 ACRES OF PRIME IN-FILL SPACE  
LOCATED IN ARDEN HILLS, MINNESOTA**

**CBRE**



**HEMPEL**  
REAL ESTATE



**62 ACRES OF LAND IN ARDEN HILLS**



**BUILD-TO-SUIT OPTIONS**



**PRIME IN-FILL LOCATION**



**CLOSE PROXIMITY TO RICE CREEK AMENITIES**



**IMMEDIATE ACCESS TO I-35W**



**DELIVERY 2027**



**5-BUILDING MASTER PLAN TOTALING 970,000 SF OF INDUSTRIAL SPACE AVAILABLE**

# PROPERTY HIGHLIGHTS

Blaine

Lino Lakes



**APEX PARK**



Roseville

Maple

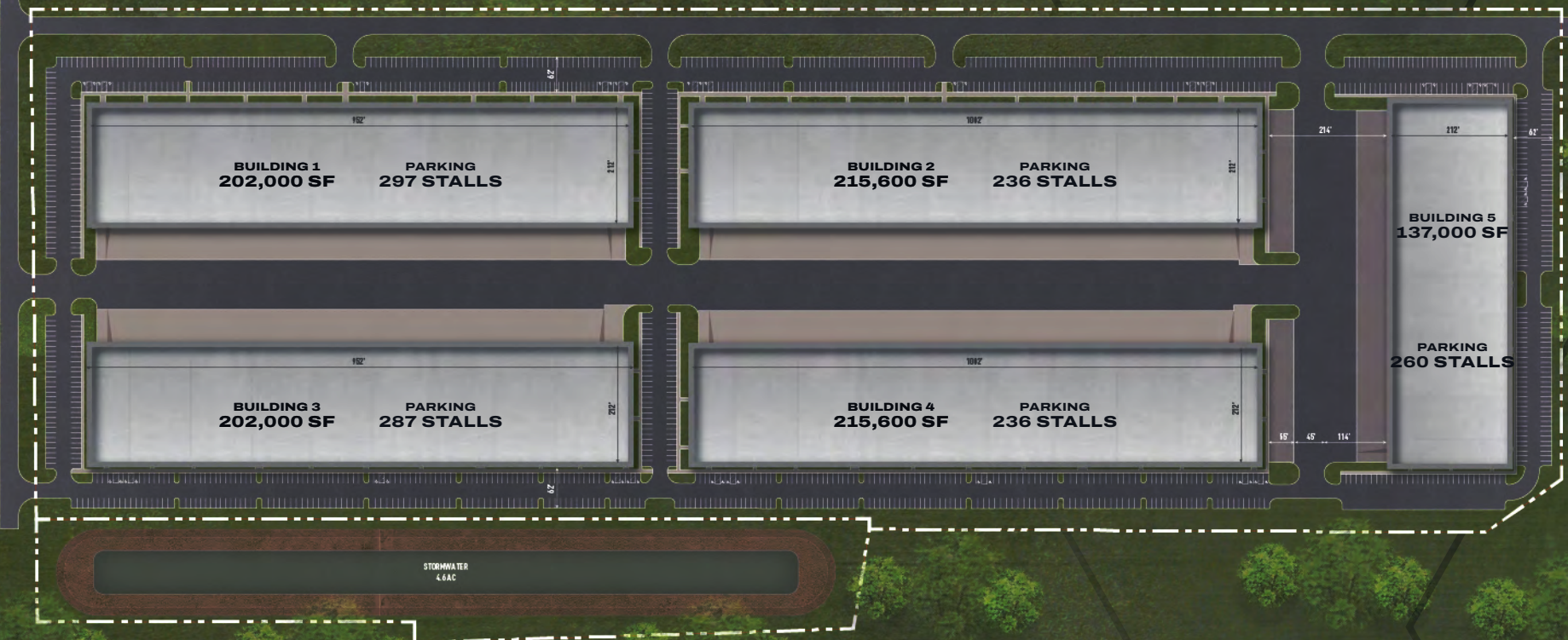
MINNEAPOLIS

SAINT PAUL

Edina

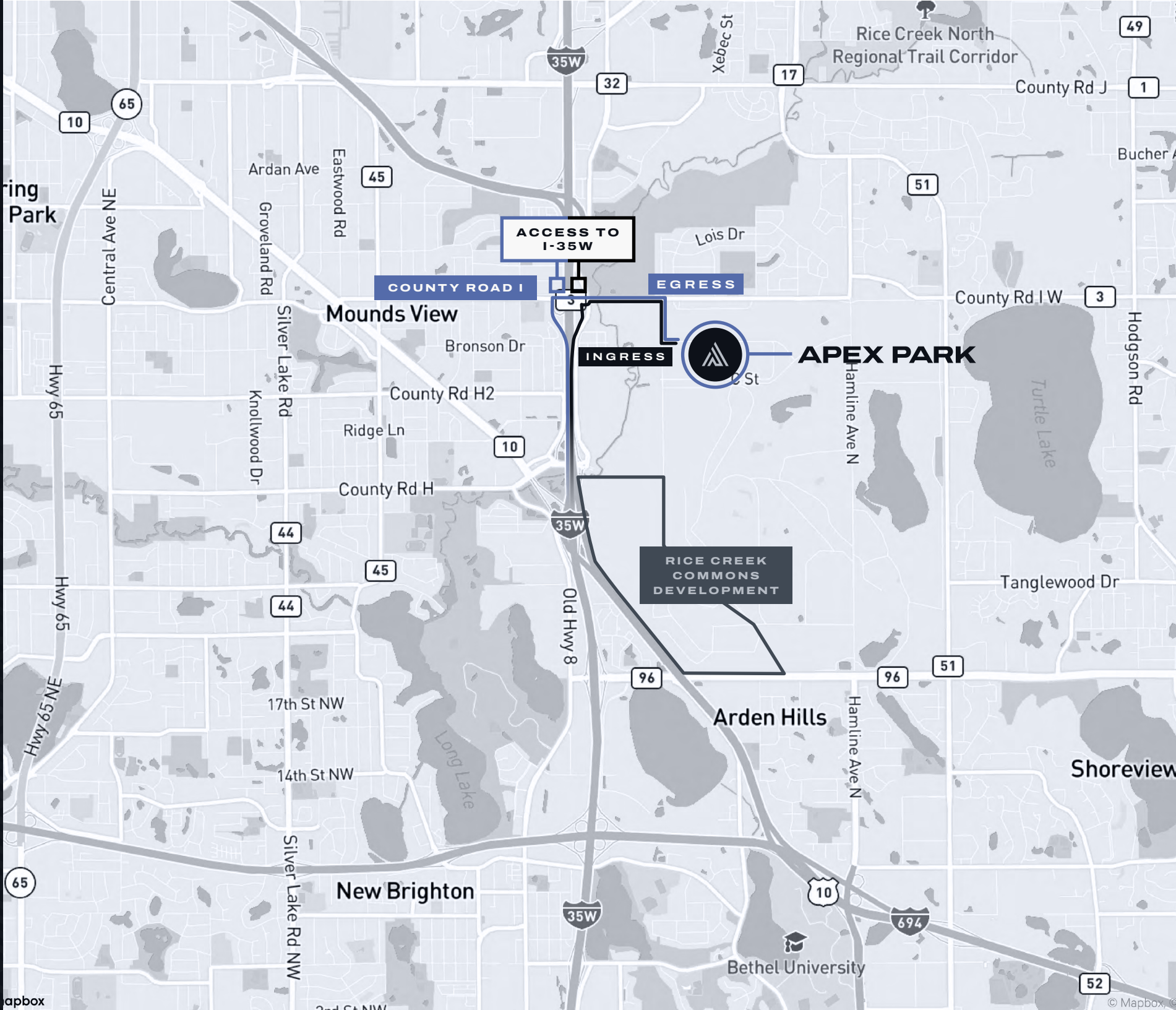
Richfield

MSP

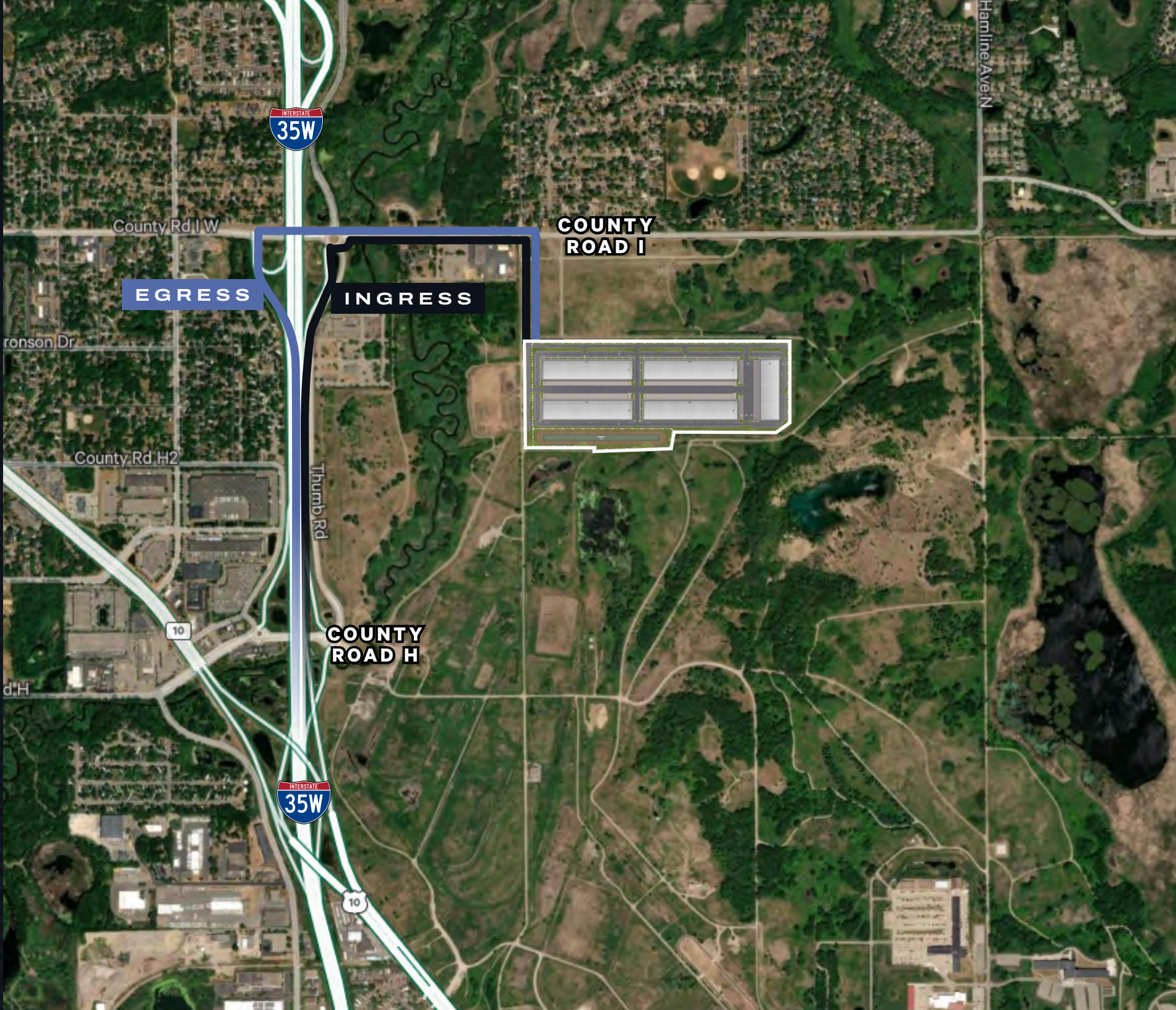


# CONCEPTUAL SITE PLAN

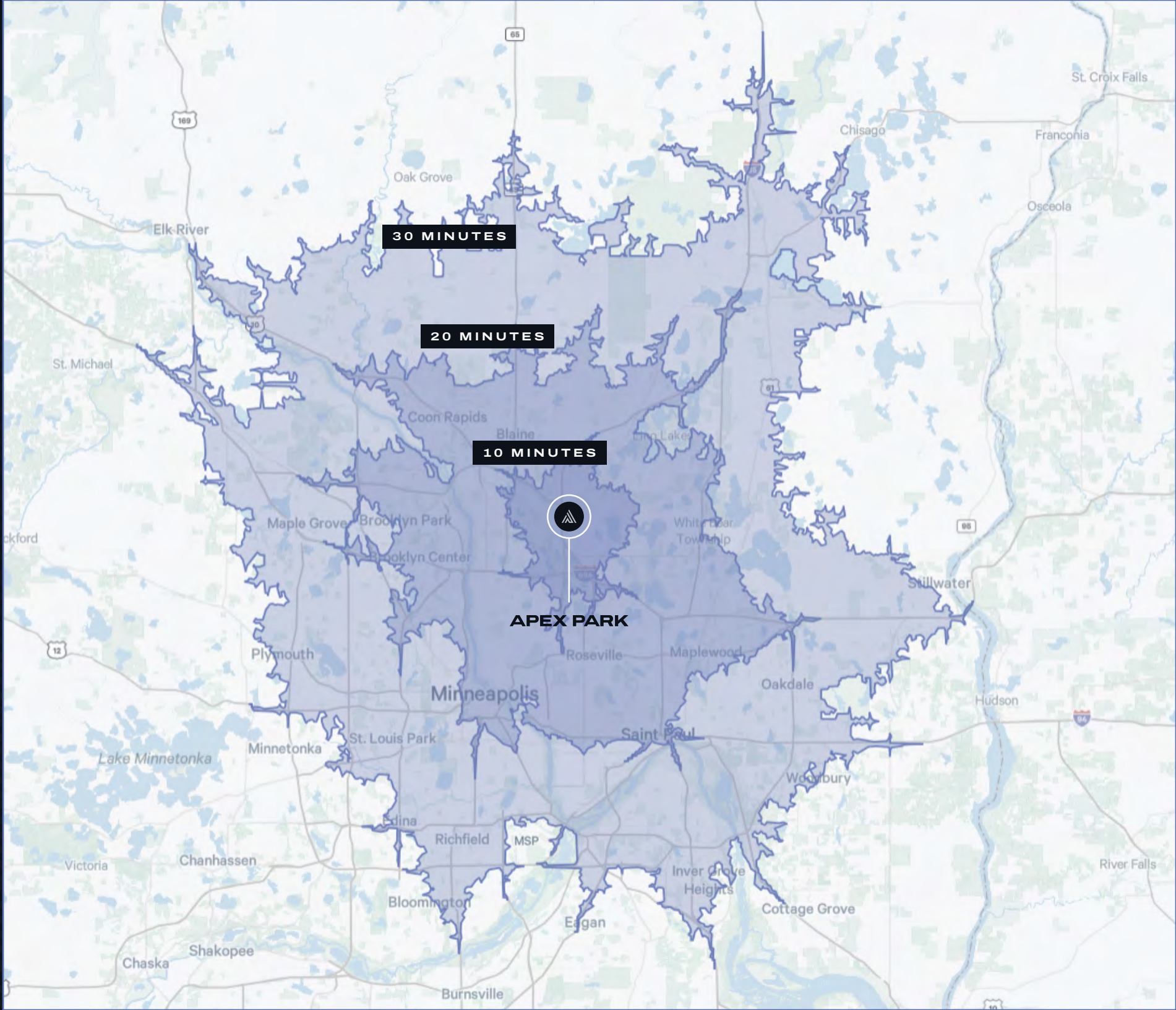
ACCESS MAP



AERIAL



DRIVE TIME MAP



AMENITY MAP





**DAN  
SWARTZ**

Executive Vice President  
+1 952 924 4652  
dan.swartz@cbre.com

**AUSTIN  
LOVIN**

First Vice President  
+1 612 336 4255  
austin.lovin@cbre.com

©2026 CBRE, Inc. All rights reserved. This information has been obtained from sources believed reliable, but has not been verified for accuracy or completeness. You should conduct a careful, independent investigation of the property and verify all information. Any reliance on this information is solely at your own risk. CBRE and the CBRE logo are service marks of CBRE, Inc. All other marks displayed on this document are the property of their respective owners, and the use of such logos does not imply any affiliation with or endorsement of CBRE. Photos herein are the property of their respective owners. Use of these images without the express written consent of the owner is prohibited. PMStudio\_September2025

**CBRE**



**HEMPEL**  
REAL ESTATE