

Chelsea Piers

Pier 62

at Eleventh Ave and West 22nd Street

Offices for Lease



**NEW YORK'S ULTIMATE
PLAYGROUND**



THE DANA COMMERCIAL TEAM
EST. 1911
Douglas Elliman
REAL ESTATE

PROPERTY DETAILS

PREMISES; PIER 62

Offices: 15,428 sq ft

Possible additional space: 4,102

Will divide to 1,493—see plan p.5

POSSESSION

Immediate

CEILINGS

12 Feet

ASKING RENT

\$80 psf

FEATURES

- On-Site Parking Available
- Lots of Natural Light
- Column-Free Space
- Overlooking the Hudson River
- Tenant-Controlled HVAC
- Close to The High Line, Google, Chelsea Market, and Hudson River Park

62 CHELSEA PIERS

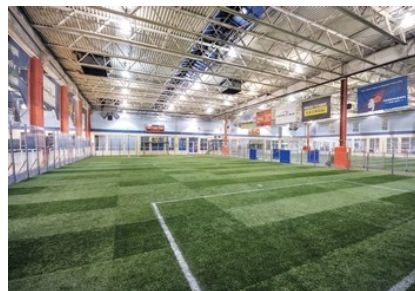
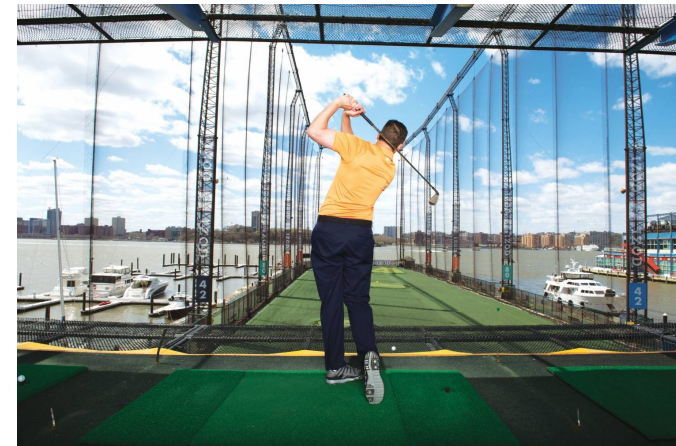
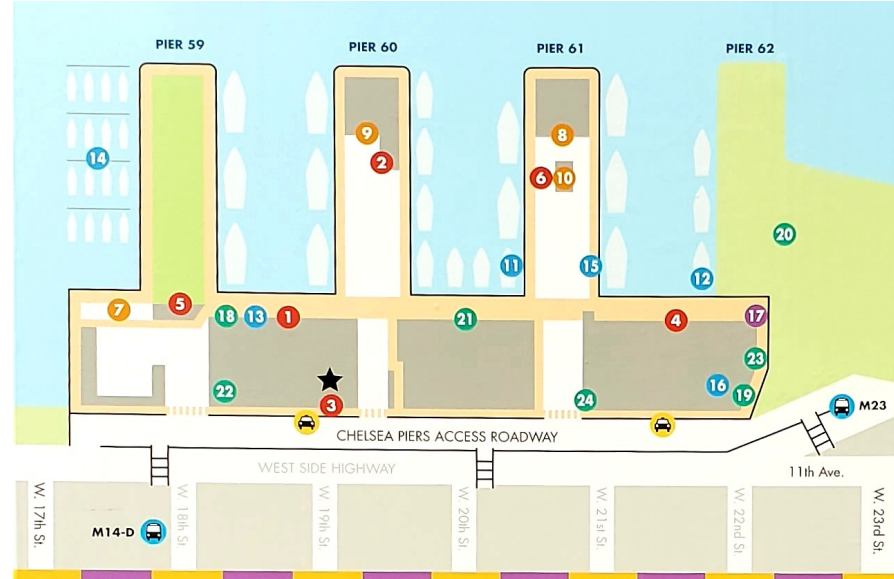
AT ELEVENTH AVENUE AND WEST 22ND STREET





CHELSEA PIERS NEW YORK

EST. NY 1995



SPORTS VENUES

- Bowlmor Lanes 1
- Chelsea Piers Fitness 2
- Evolve Barre Studio 3
- Field House 4
- Golf Club 5
- Sky Rink 6

EVENT SITES

- Current 7
- The Lighthouse 8
- Pier Sixty 9
- Sunset Terrace (Enter at Sky Rink) 10

MARITIME CENTER

- Bateaux New York 11
- Classic Harbor Line 12
- MarineMax 13 14
- Spirit Cruises (Docking & Ticket Booth) 15
- Spirit Cruises (Offices) 16

RESTAURANTS

- Bowlmor Lanes (Bar and Grill) 1
 - fresh&co 17
 - Piers Pizza Company (Sky Rink) 6
- ## SPECIALTY SHOPS & SERVICES
- New York Golf Center 5
 - Skater's Edge Pro Shop 6

ALSO AT CHELSEA PIERS

- Capital One Bank ATMs 18 19
- Chelsea Cove, Hudson River Park 20
- Corporate Offices 19
- History Wall 21
- Pier 59 Studios 22
- Public Restrooms 23
- Security (24-hrs.) 24

chelseapiers.com   

Exclusively Represented by:

THE DANA COMMERCIAL TEAM

AT DOUGLAS ELLIMAN REAL ESTATE

GARY DANA

516-946-7207

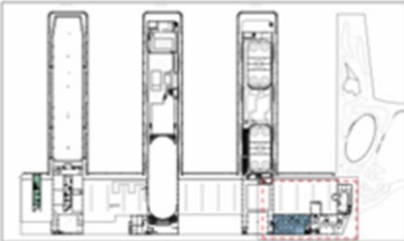
RICK DANA

917-952-0624

gdana@elliman.com

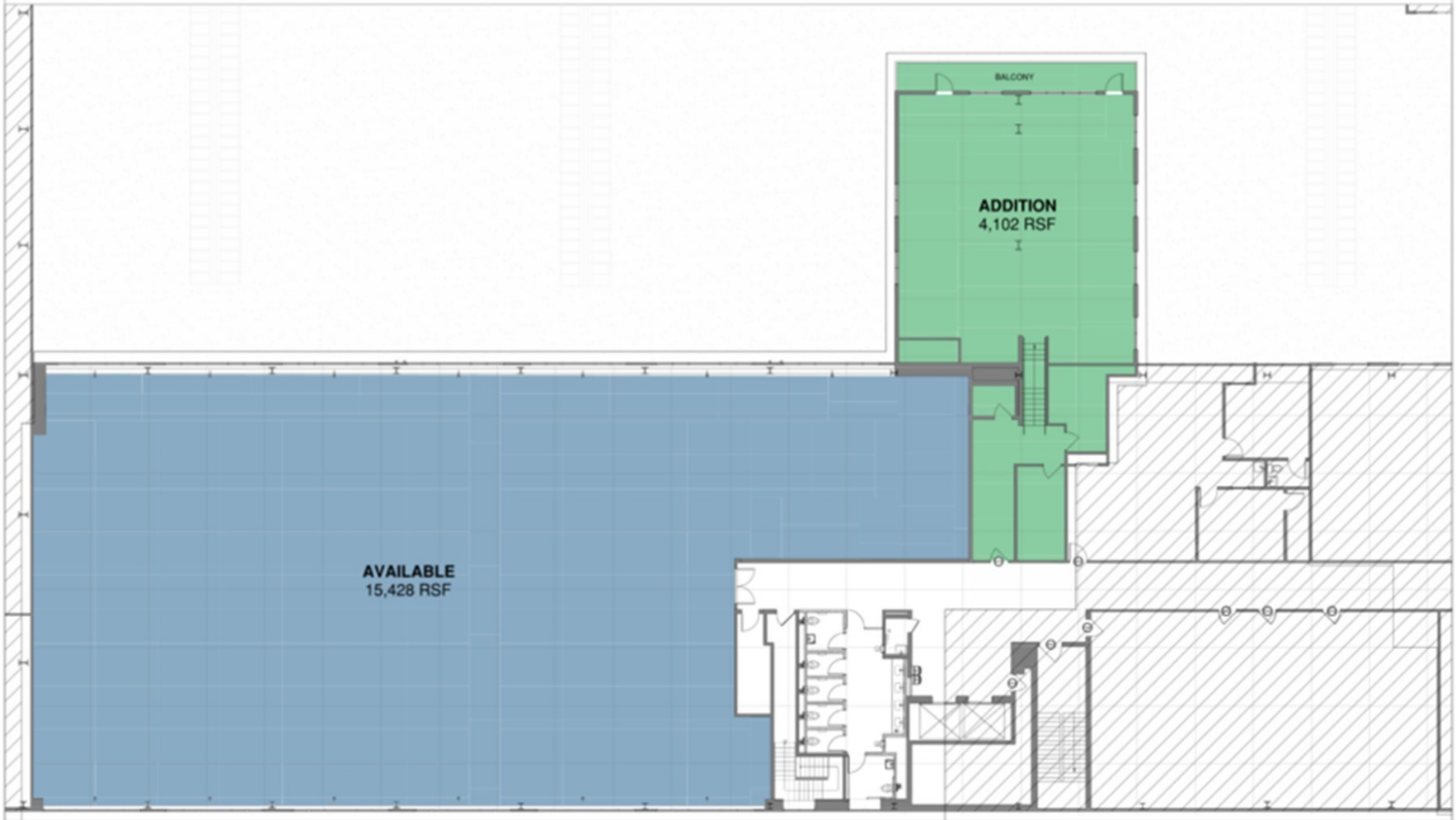
rdana@elliman.com





LOCATION - SECOND FLOOR MEZZANINE

	RSF
AVAILABLE	15,428 RSF
ADDITION	4,102 RSF
TOTAL	19,530 RSF



PIER 62 OFFICE - Proposed Single Office

UPDATE:12/18/2024

