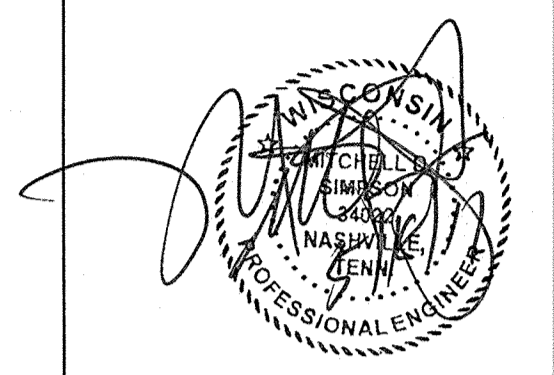
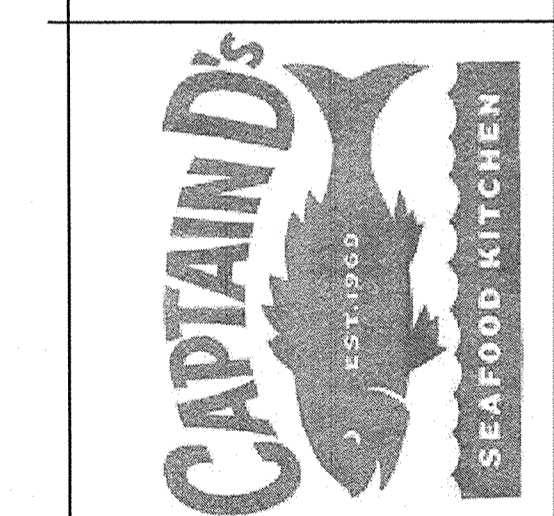


G:\17072\M-1.DGN
5/17/2017
3:52:01 PM



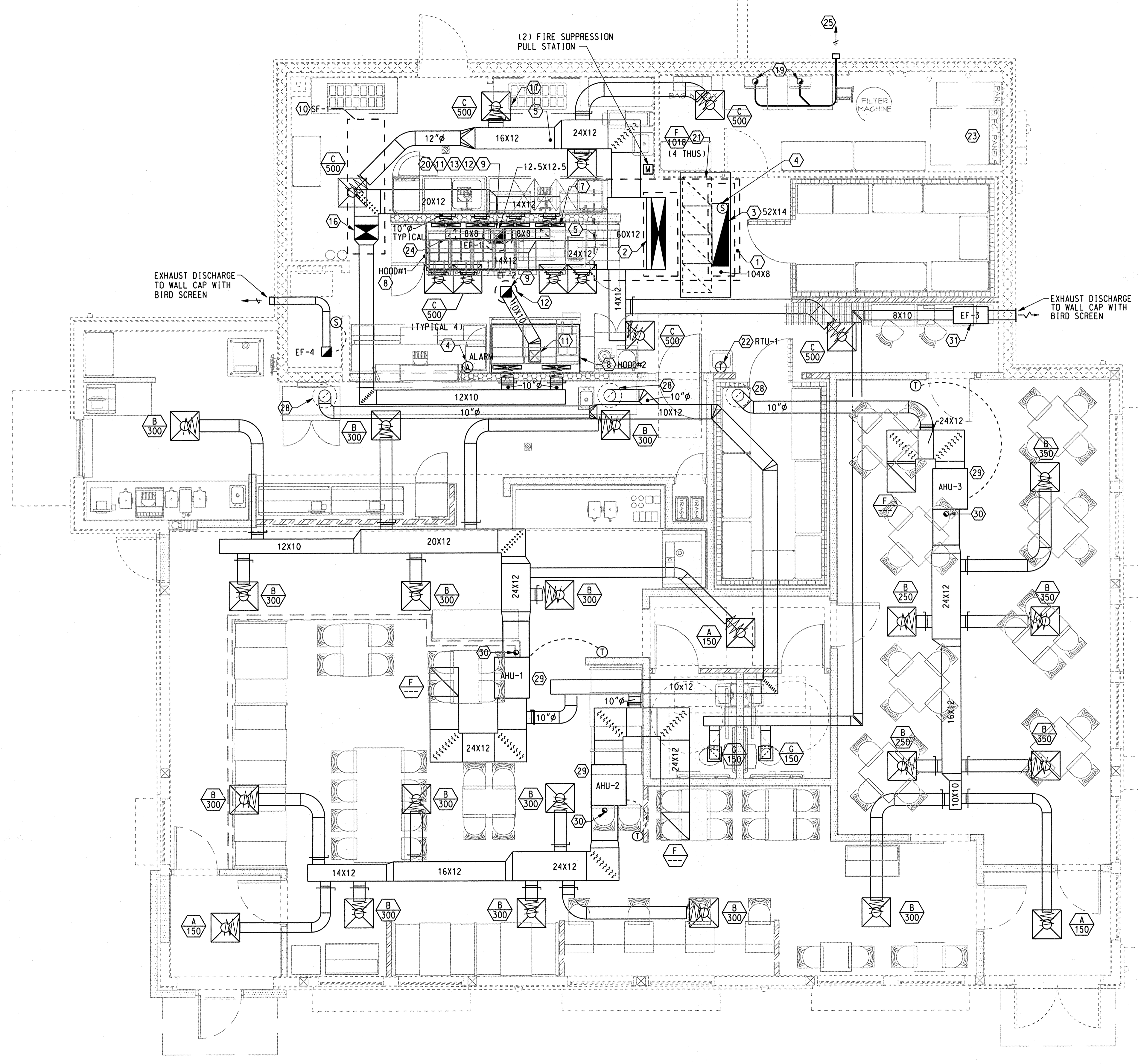
A NEW LOCATION FOR
CAPTAIN D'S
7320 W GOOD HOPE ROAD
MILWAUKEE, WI 53223
CAPTAIN D'S, LLC
624 GRASSMERE PARK DRIVE,
SUITE 30
NASHVILLE, TN 37211



Job Number:
68C-0157
Revisions:

MAY 18, 2017
M-1
H.V.A.C.
FLOOR PLAN

- HVAC PLAN NOTES:**
- ROOFTOP UNIT. REFER TO MECHANICAL ROOF PLAN.
 - SUPPLY AIR DUCT FROM UNIT ON ROOF. OFFSET IN CURB AS REQ'D TO AVOID ROOF STRUCTURE.
 - RETURN AIR DUCT FROM UNIT ON ROOF. OFFSET IN CURB AS REQ'D TO AVOID ROOF STRUCTURE.
 - DUCT MOUNTED SMOKE DETECTOR FOR UNIT SHUTDOWN. PROVIDE AN AUDIO AND VISUAL ALARM IN AN APPROVED LOCATION. ALARM SHALL BE LABELED "DUCT TROUBLE".
 - DUCTWORK LOCATED BELOW ROOF JOISTS, TYPICAL.
 - THERMOSTAT SENSOR FOR UNIT DESIGNATED, MOUNT ON WALL @ 66" A.F.F.
 - MAKE-UP AIR CONNECTION AT HOOD. REFER TO HOOD DRAWINGS, TYPICAL ALL.
 - KITCHEN HOOD, FURNISHED BY HOOD VENDOR, RECEIVED & INSTALLED BY MECHANICAL CONTRACTOR. REFER TO HOOD DRAWINGS.
 - KITCHEN HOOD EXHAUST FAN ON ROOF. REFER TO MECHANICAL ROOF PLAN. INTERLOCK WITH HOOD CONTROLS.
 - MAKE-UP AIR UNIT SF-1 ON ROOF. REFER TO MECHANICAL ROOF PLAN.
 - KITCHEN HOOD EXHAUST COLLAR. WELD EXHAUST DUCT TO COLLAR. REFER TO HOOD DRAWINGS, TYPICAL.
 - KITCHEN HOOD EXHAUST DUCT UP TO FAN ON ROOF. DUCT SHALL BE 16 GA. EXTERNALLY WELDED LIQUID TIGHT STEEL. DUCT SHALL BE ENCAPSULATED WITH A RATED DUCT WRAP. REFER TO DETAIL ON SHEET M-4.
 - HOOD EXHAUST DUCT SHALL SLOPE DOWN TO HOOD AT A MINIMUM OF 1/4" PER FT., TYPICAL.
 - RESTROOM EXHAUST FAN ON ROOF. REFER TO MECHANICAL ROOF PLAN.
 - RESTROOM EXHAUST DUCT UP TO FAN ON ROOF.
 - MAKE-UP AIR DUCT FROM UNIT ON ROOF.
 - PROVIDE INSULATED PLENUM ABOVE SUPPLY GRILLE. TYPICAL FOR THIS TYPE OF AIR DEVICE.
 - PROVIDE MANUAL VOLUME CONTROL DAMPER, TYPICAL.
 - REFER TO PLUMBING DRAWINGS FOR WATER HEATING VENTING. COORDINATE WITH PLUMBING CONTRACTOR.
 - PROVIDE CODE REQUIRED CLEANOUT AT HOOD EXHAUST DUCT ELBOWS, TYPICAL. PROVIDE SIGN AT CLEANOUT THAT READS "GREASE DUCT CLEANOUT - DO NOT OBSTRUCT"
 - PROVIDE PLENUM ABOVE RETURN AIR GRILLE. COORDINATE WITH STRUCTURE, TYPICAL.
 - THERMOSTAT SENSOR FOR UNIT DESIGNATED, MOUNT @ 66" A.F.F.
 - THERMOSTAT FOR ROOFTOP UNITS MOUNTED IN MAIN ELECTRICAL / TEMPERATURE PANEL.
 - 8x8 EXHAUST CONNECTION (TYPICAL 2).
 - PROVIDE CONCENTRIC VENTING AND INSTALL PER MANUFACTURER'S RECOMMENDATIONS. SEE ARCHITECTURAL EXTERIOR ELEVATIONS FOR EXACT MOUNTING HEIGHT AND LOCATION.
 - CRITICAL LOCATION - HOLD DUCTWORK AS HIGH AS POSSIBLE TO ALLOW INSTALLATION OF LIGHT FIXTURES BELOW.
 - (2) FIRE SUPPRESSION PULL STATION.
 - EXISTING OUTSIDE AIR INTAKE TO BE REUSED AND INCREASED IN SIZE TO 10"φ.
 - AIR HANDLING UNIT MOUNTED HORIZONTALLY ABOVE CEILING.
 - 3"φ FLUE UP TO PENETRATE THROUGH ROOF.
 - INLINE EXHAUST FAN MOUNTED ABOVE CEILING.



H.V.A.C.
FLOOR PLAN
SCALE 1/4" = 1'-0"

4'-0" / in.
rsouthall