

ONE HUNDRED WILSHIRE BLVD
FOR LEASE

100 WILSHIRE

 CUSHMAN &
WAKEFIELD

[CUSHMANWAKEFIELD.COM](https://cushmanwakefield.com)



100

WILSHIRE BLVD
SANTA MONICA

AVAILABLE SF	SIZE	OCCUPANCY
SUITE 155	1,962 RSF	IMMEDIATE
SUITE 600	2,628 RSF	AVAILABLE 2/2026
SUITE 625	4,752 RSF	AVAILABLE 2/2026
SUITE 630	2,046 RSF	AVAILABLE 2/2026
SUITE 640	1,800 RSF	AVAILABLE 2/2026
SUITE 850	3,835 RSF	IMMEDIATE
SUITE 860	1,465 RSF	AVAILABLE 4/2026
SUITE 910	1,863 RSF	AVAILABLE 11/2025
SUITE 1755	2,169 RSF	IMMEDIATE
SUITE 2040	2,500 RSF	IMMEDIATE

PROPERTY HIGHLIGHTS

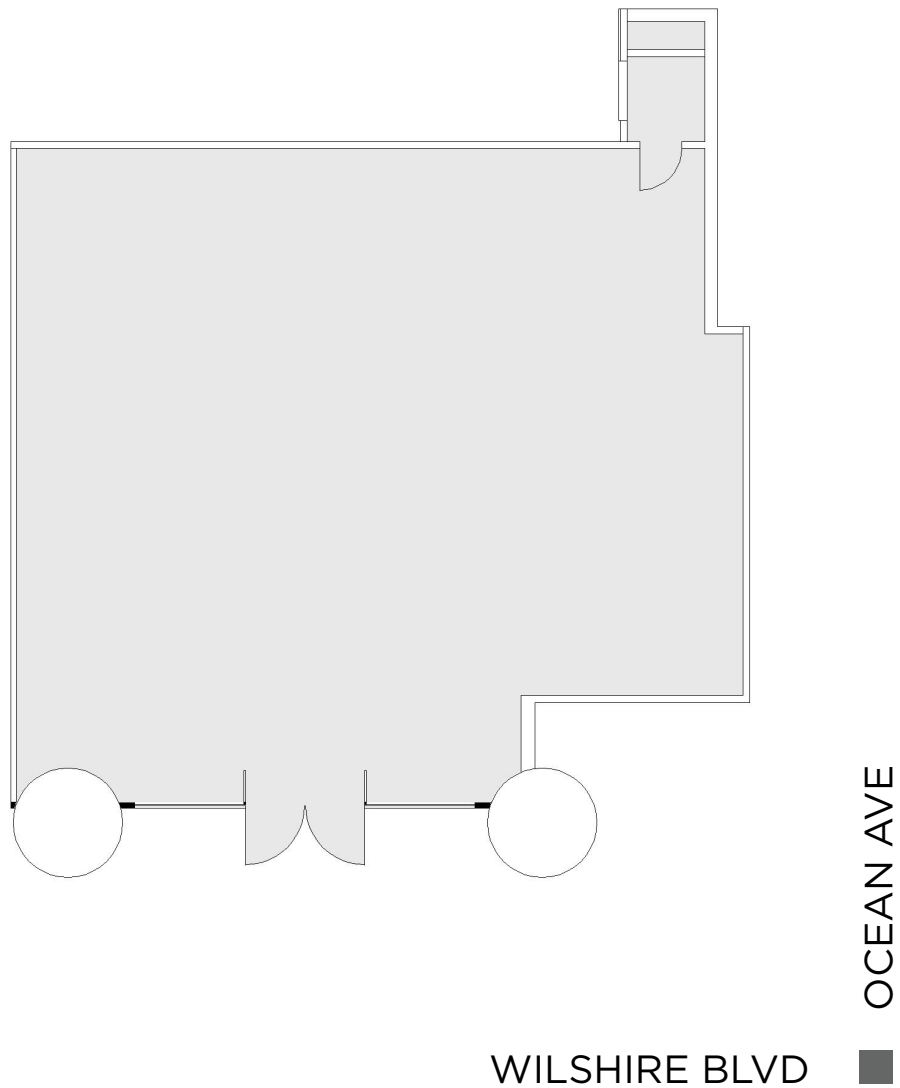
100 Wilshire Boulevard is Santa Monica's only high rise office tower featuring unobstructed views of the Pacific Ocean, the Santa Monica Mountains and the Westside.

Located within walking distance to the 3rd Street Promenade, Palisades Park, the Santa Monica Pier and numerous restaurants, hotels, and entertainment amenities. 100 Wilshire is Southern California's preeminent office address and now features a freshly renovated lobby, elevators and landscaping.

SUITE 155
IMMEDIATE
1,962 RSF

100
WILSHIRE BLVD
SANTA MONICA

Rare ground floor availability with storefront
along Wilshire Boulevard.

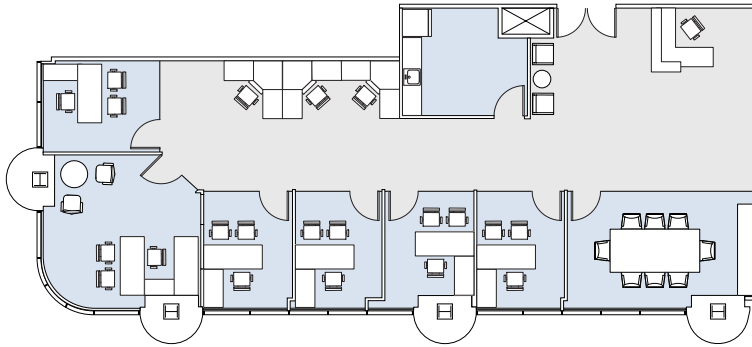


↑
N

100
WILSHIRE BLVD
SANTA MONICA

SUITE 600
AVAILABLE 2/2026
2,628 RSF

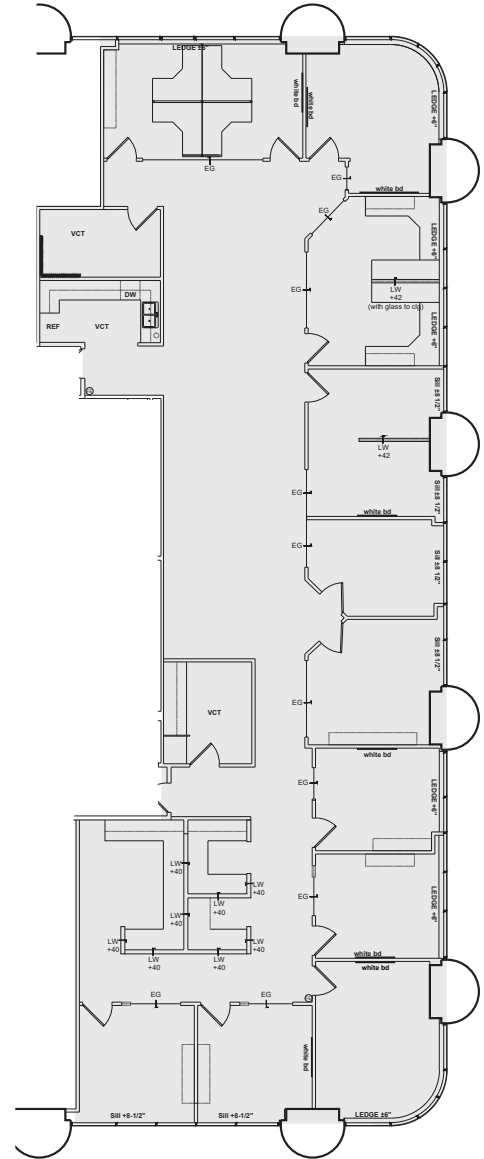
WILSHIRE



OCEAN AVE

SUITE 625
IMMEDIATE
4,752 RSF

100
WILSHIRE BLVD
SANTA MONICA



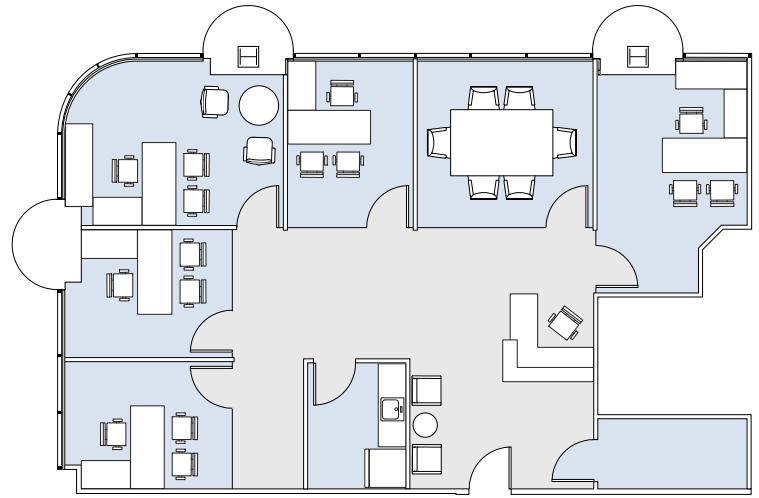
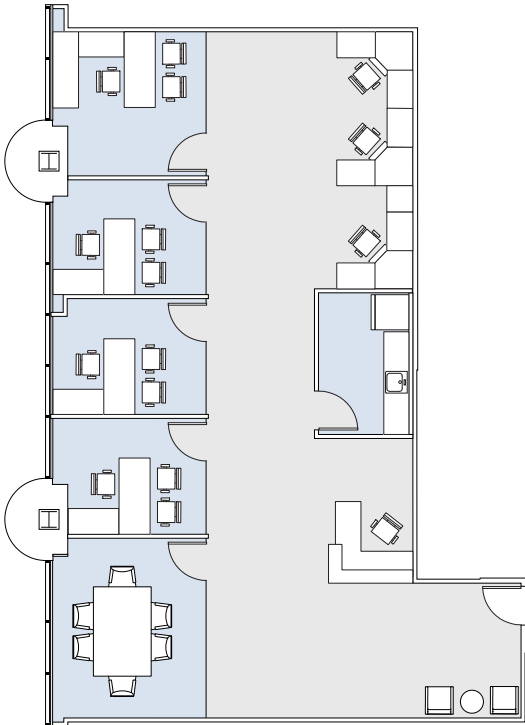
100
WILSHIRE BLVD
SANTA MONICA

SUITE 630
AVAILABLE 2/2026
2,046 RSF

SUITE 640
AVAILABLE 2/2026
1,800 RSF

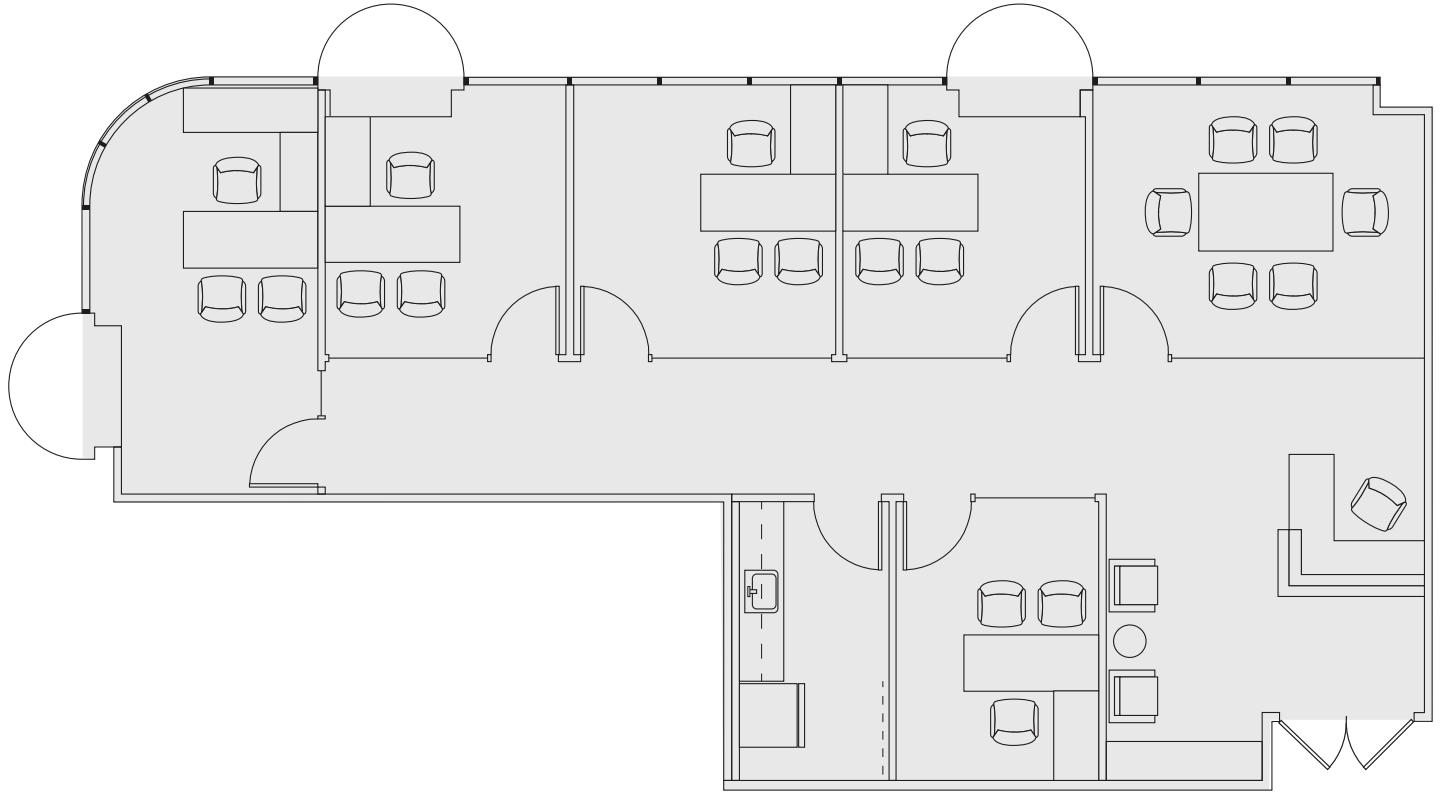
100
WILSHIRE BLVD
SANTA MONICA

WILSHIRE



OCEAN AVE

OCEAN AVE



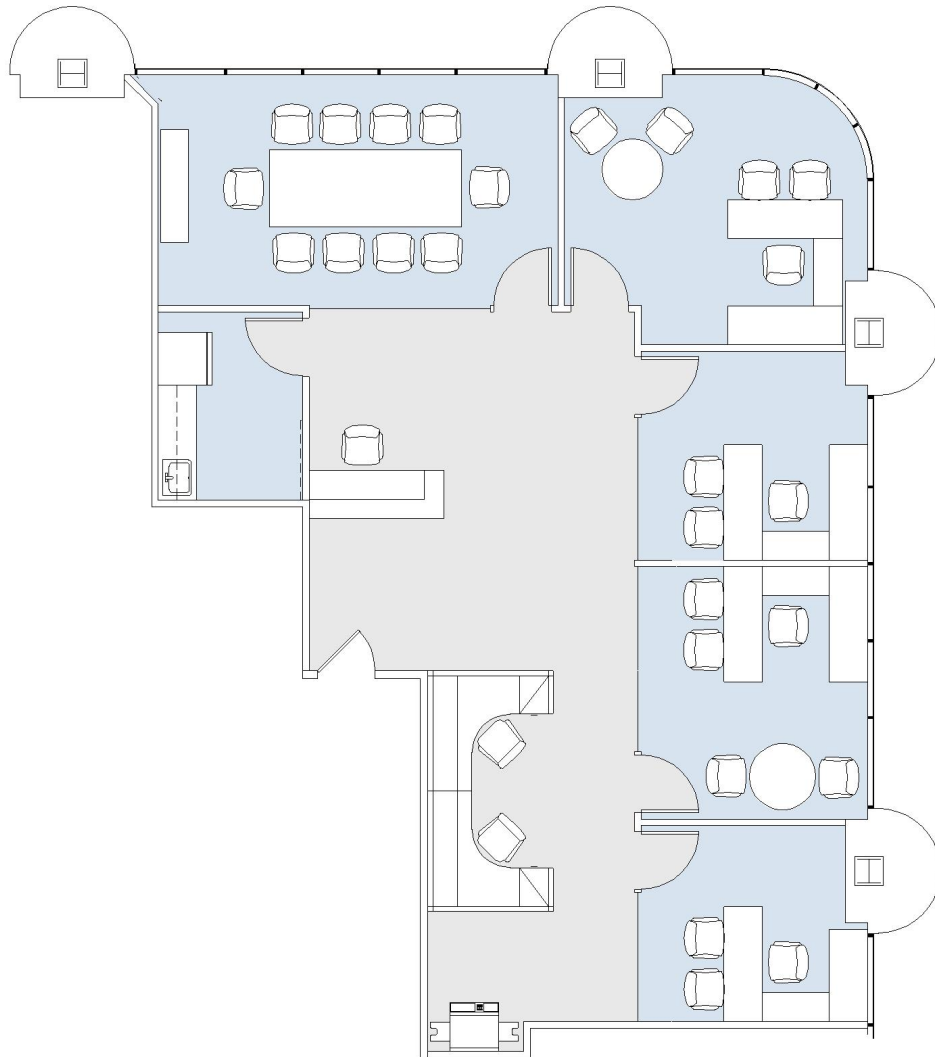
SUITE 910
AVAILABLE 11/1/2025
1,863 RSF

100
WILSHIRE BLVD
SANTA MONICA

SUITE 1755
IMMEDIATE
2,169 RSF

100
WILSHIRE BLVD
SANTA MONICA

WILSHIRE

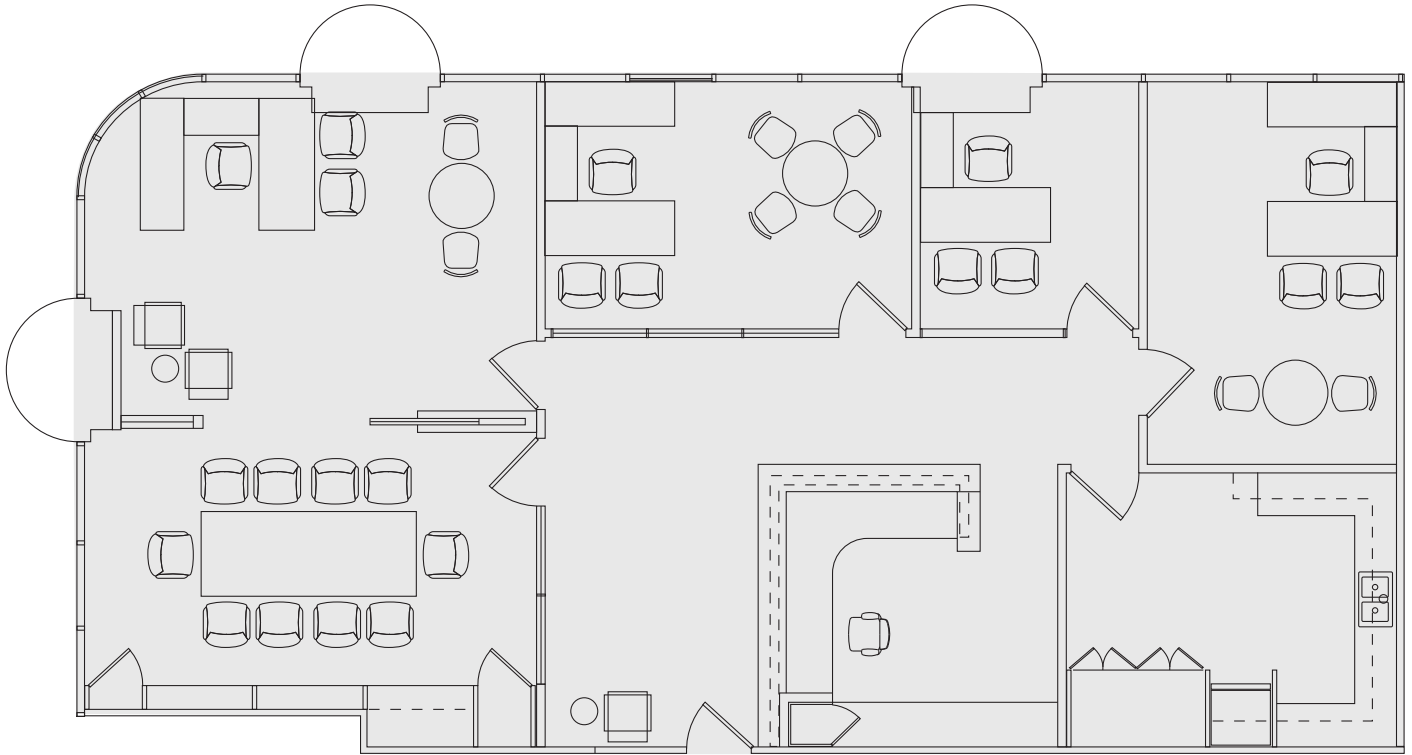


OCEAN AVE

SUITE 2040
IMMEDIATE
2,500 RSF

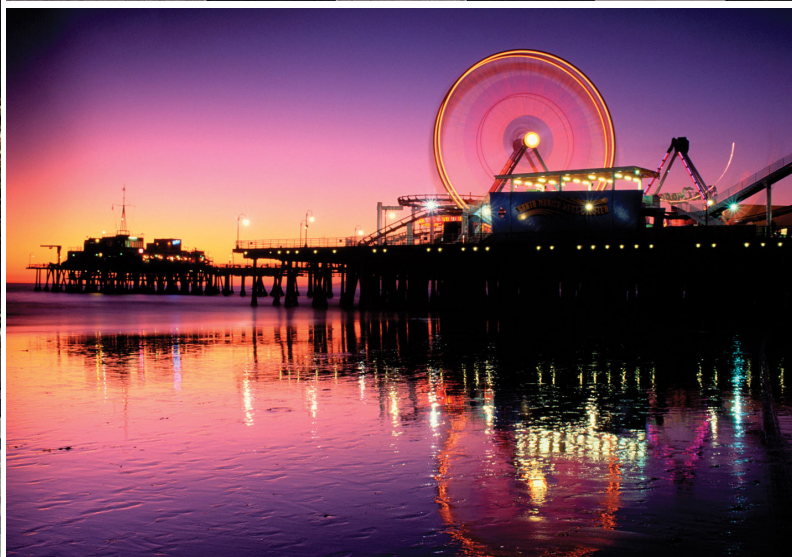
100
WILSHIRE BLVD
SANTA MONICA

OCEAN AVE









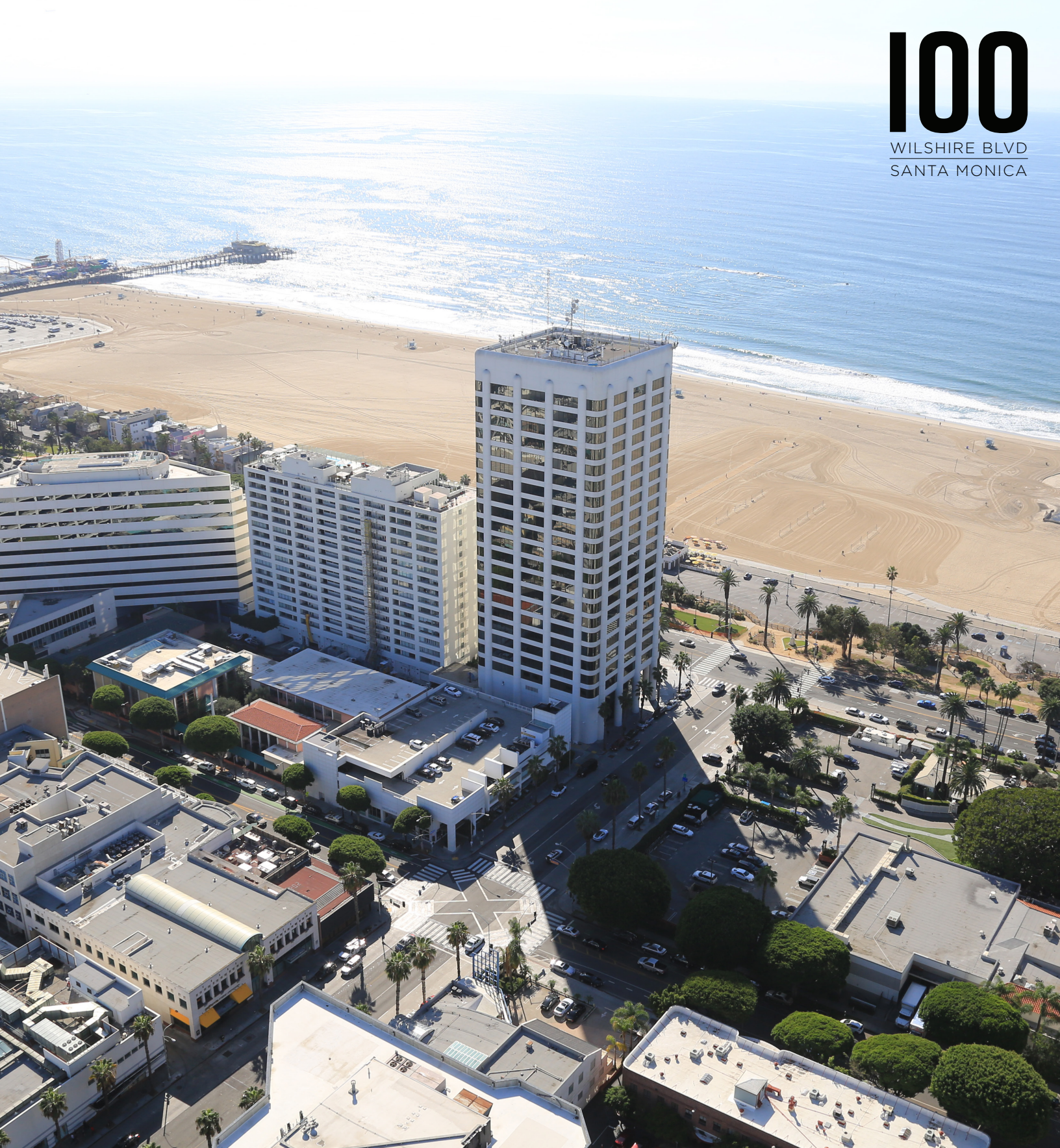
AMENITIES

- 1 **100 WILSHIRE BLVD**
- 2 PALIHOUSE
- 3 THE HUNTLEY HOTEL
- 4 FAIRMONT HOTEL
- 5 THE BUNGALOW
- 6 SOUL CYCLE
- 7 HILLSTONE
- 8 WALLY'S SANTA MONICA
- 9 TENDER GREENS
- 10 SANTA MONICA FARMER'S MARKET
- 11 HOTEL SHANGRI-LA
- 12 ELEPHANTE
- 13 SUGAR FISH
- 14 THE MISFIT
- 15 BLUE PLATE OYSTERETTE
- 16 BOA STEAKHOUSE
- 17 SUSHI ROKU
- 18 WATERGRILL
- 19 THE CRAFTSMAN
- 20 BLUE PLATE TACO
- 21 SHORE HOTEL
- 22 SANTA MONICA PIER
- 23 MERCADO
- 24 SANTA MONICA PLACE
- 25 FRITTO MISTO
- 26 UMAMI BURGER
- 27 PHILZ COFFEE
- 28 ESTERS WINE BAR
- 29 BODEGA WINE BAR



100

WILSHIRE BLVD
SANTA MONICA



ERIC OLOFSON, II

CA Lic 00901159

+1 310 595 2216

eric.olofson@cushwake.com

SCOTT MENKUS

CA Lic 01476553

+1 310 595 2211

scott.menkus@cushwake.com



©2025 Cushman & Wakefield. All rights reserved. The information contained in this communication is strictly confidential. This information has been obtained from sources believed to be reliable but has not been verified. NO WARRANTY OR REPRESENTATION, EXPRESS OR IMPLIED, IS MADE AS TO THE CONDITION OF THE PROPERTY (OR PROPERTIES) REFERENCED HEREIN OR AS TO THE ACCURACY OR COMPLETENESS OF THE INFORMATION CONTAINED HEREIN, AND SAME IS SUBMITTED SUBJECT TO ERRORS, OMISSIONS, CHANGE OF PRICE, RENTAL OR OTHER CONDITIONS, WITHDRAWAL WITHOUT NOTICE, AND TO ANY SPECIAL LISTING CONDITIONS IMPOSED BY THE PROPERTY OWNER(S). ANY PROJECTIONS, OPINIONS OR ESTIMATES ARE SUBJECT TO UNCERTAINTY AND DO NOT SIGNIFY CURRENT OR FUTURE PROPERTY PERFORMANCE. COE-PM-WEST- 10/02/25