

FOR LEASE

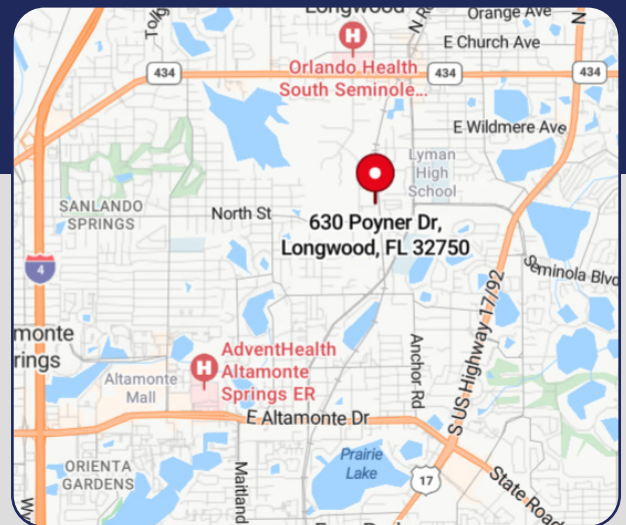


## GRADE LEVEL WAREHOUSE

630 Poyner Drive, Longwood, FL 32750

### 3,000 SF AVAILABLE

- > 3,000 SF available (2,250 SF warehouse, 750 SF office)
- > 14' - 18' clear height
- > Drive-through setup (front and rear doors)
- > Additional high storage space
- > Excellent parking, roughly six spaces with some additional parking behind space
- > One front load 12' x 12' grade level roll-up door
- > One rear 12' x 12' grade level door
- > Immediately available
- > **\$4,500.00/month, CAM included, tenant pays utilities**



**Bill Bywater, CCIM**

D 407.206.5736

O 407.206.7300

bill@bywater.com



1209 Edgewater Drive

Suite 100

Orlando, FL 32804

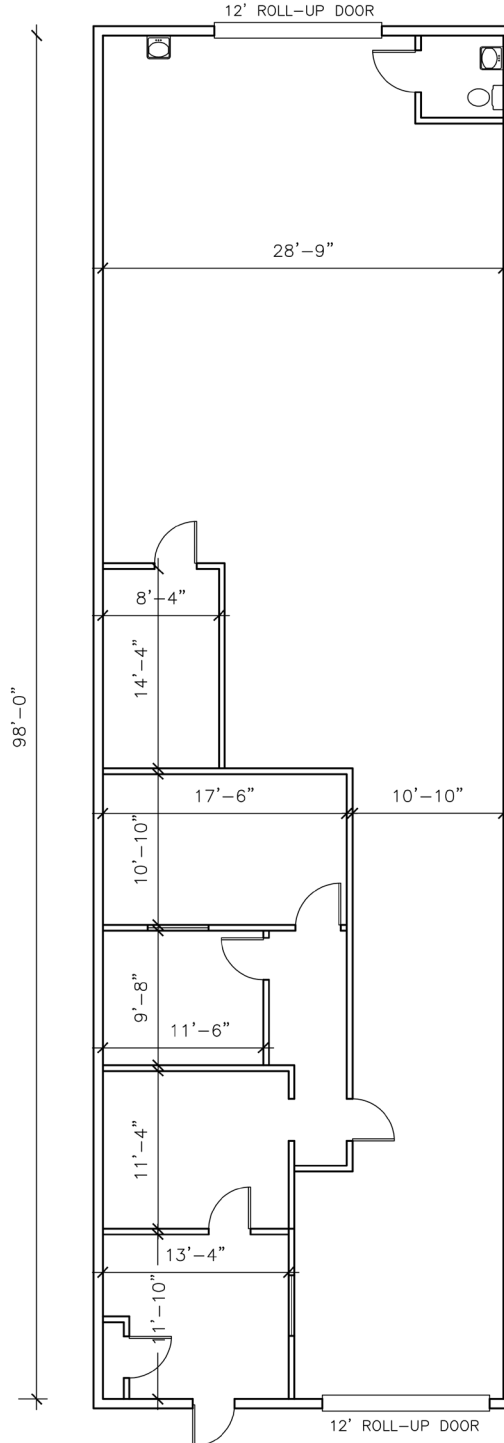
407.206.7300 Main

www.bywater.com

# GRADE LEVEL WAREHOUSE

630 Poyner Drive, Longwood, FL 32750

## FLOORPLAN



1209 Edgewater Drive, Suite 100 | Orlando, FL 32804 | 407.206.7300 | [www.bywater.com](http://www.bywater.com)

The information contained herein was obtained from sources deemed reliable and is assumed to be correct. It is not guaranteed by The Bywater Company.

# GRADE LEVEL WAREHOUSE

630 Poyner Drive, Longwood, FL 32750



1209 Edgewater Drive, Suite 100 | Orlando, FL 32804 | 407.206.7300 | [www.bywater.com](http://www.bywater.com)

The information contained herein was obtained from sources deemed reliable and is assumed to be correct. It is not guaranteed by The Bywater Company.