

SIGNATURE PLACE – DOWNTOWN ST. PETERSBURG CLASS A OFFICE SPACE FOR LEASE



147 2nd Avenue S, St. Petersburg, Florida 33701
Downtown St. Petersburg Submarket

- Up to 6,380 RSF Office Space Available!
- **Lease Rates starting at \$37.50 per RSF Full-Service Gross.**
- Gross Rate includes all Operating Expenses with a Base Year Pass-Through.
- Garage Parking @ 1 space per 1,000 RSF leased.
- Newer Class A Office Space + Best location in downtown St. Petersburg!
- Signature Place is located off I-375 with close proximity to major office buildings, numerous restaurants, retail shopping, hotels, museums, Albert Whitted Airport, the Pier & the Marina.
- Located within 35 minutes of 85% of all households in the Tampa Bay Area, Signature Place is a quick drive from Clearwater, Tampa, west St. Petersburg, Sarasota and Bradenton!

ECHELON

Echelon Real Estate Services, LLC
Licensed Real Estate Broker



For More Information Please Contact:

Michael S. Talmadge
mtalmadge@echelonre.com

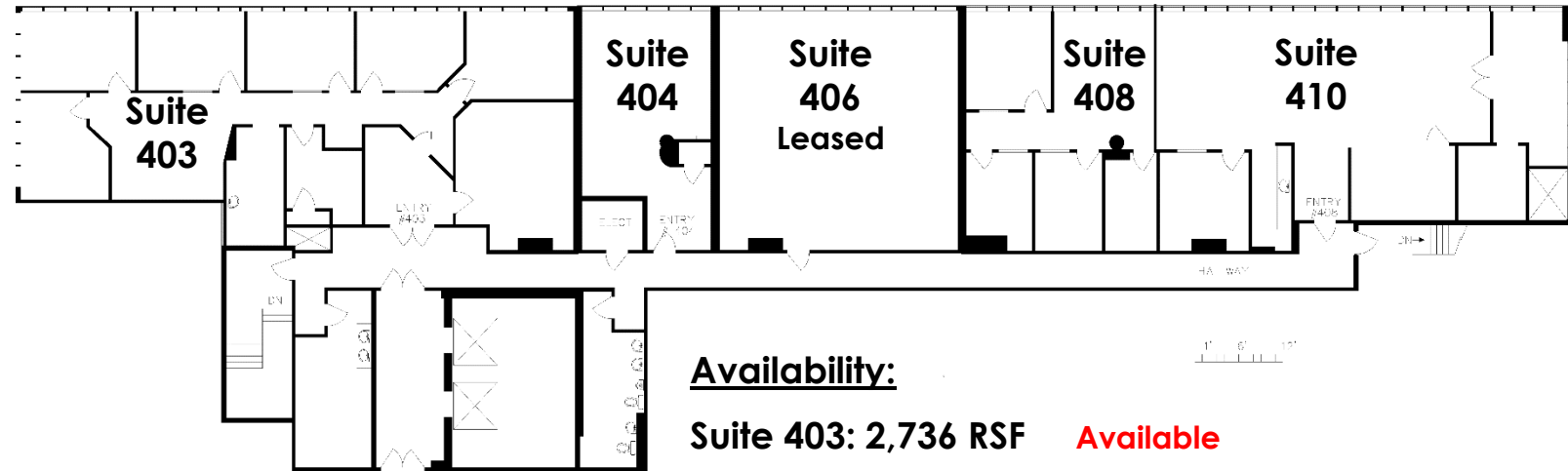
727.214.4650

www.eresproperties.com

SIGNATURE PLACE – DOWNTOWN ST. PETERSBURG CLASS A OFFICE SPACE FOR LEASE



4th Floor Availability



Availability:

- Suite 403: 2,736 RSF **Available**
- Suite 404: 646 RSF **Fully-Furnished \$2500/month**
- Suite 408: 958 RSF **Available 9/2025**
- Suite 410: 2,040 RSF **Available**
- Total: 6,380 RSF

ECHELON

Echelon Real Estate Services, LLC
Licensed Real Estate Broker



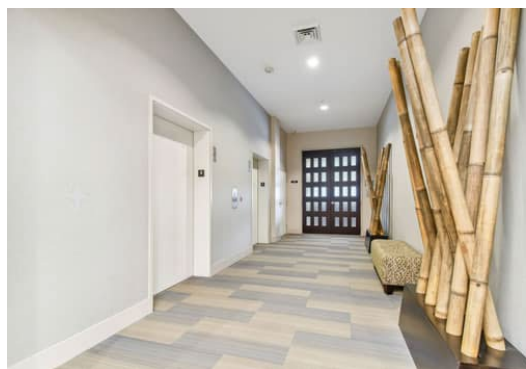
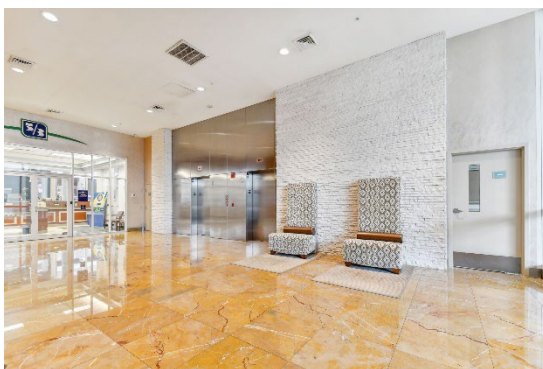
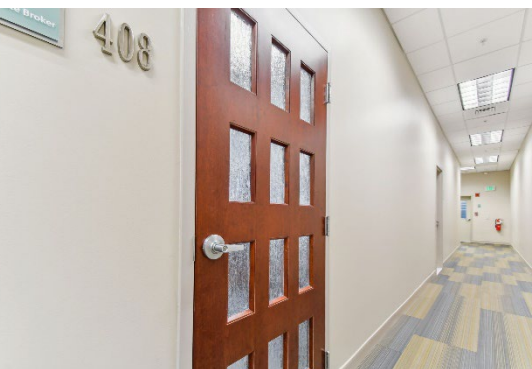
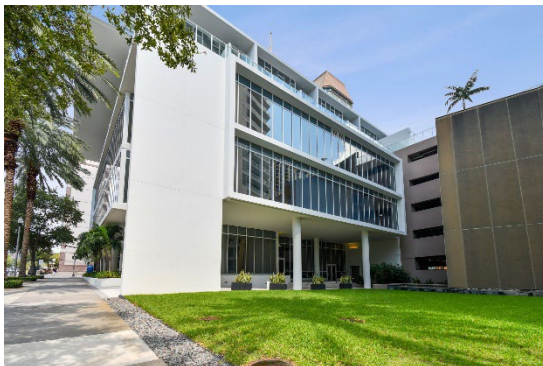
For More Information Please Contact:

Michael S. Talmadge
mtalmadge@echelonre.com

727.214.4650

www.eresproperties.com

SIGNATURE PLACE – DOWNTOWN ST. PETERSBURG CLASS A OFFICE SPACE FOR LEASE



ECHELON

Echelon Real Estate Services, LLC
Licensed Real Estate Broker



For More Information Please Contact:

Michael S. Talmadge

mtalmadge@echelonre.com

727.214.4650

www.eresproperties.com