



FOR LEASE

3701 Long Beach Blvd

LONG BEACH, CA 90807



Total 8,850 SF of Available Office Space
\$2.00/SF Broker Bonus | PRICE REDUCED!

GEORGE RUSSELL
310.996.2206
george.russell@kidder.com
LIC N° 00595025

**Kidder
Mathews**

This information supplied herein is from sources we deem reliable. It is provided without any representation, warranty, or guarantee, expressed or implied as to its accuracy. Prospective Buyer or Tenant should conduct an independent investigation and verification of all matters deemed to be material, including, but not limited to, statements of income and expenses. Consult your attorney, accountant, or other professional advisor.

KIDDER.COM

Property Details

[illegible]

Suite 424 1,379 SF



Kidder Mathews

FOR LEASE

Amenities Map

3701 LONG BEACH BLVD, LONG BEACH, CA 90807



KIDDER.COM

This information supplied herein is from sources we deem reliable. It is provided without any representation, warranty, or guarantee, expressed or implied as to its accuracy. Prospective Buyer or Tenant should conduct an independent investigation and verification of all matters deemed to be material, including, but not limited to, statements of income and expenses. Consult your attorney, accountant, or other professional advisor.

km Kidder Mathews

FOR LEASE

Property Photos

3701 LONG BEACH BLVD, LONG BEACH, CA 90807



KIDDER.COM

This information supplied herein is from sources we deem reliable. It is provided without any representation, warranty, or guarantee, expressed or implied as to its accuracy. Prospective Buyer or Tenant should conduct an independent investigation and verification of all matters deemed to be material, including, but not limited to, statements of income and expenses. Consult your attorney, accountant, or other professional advisor.

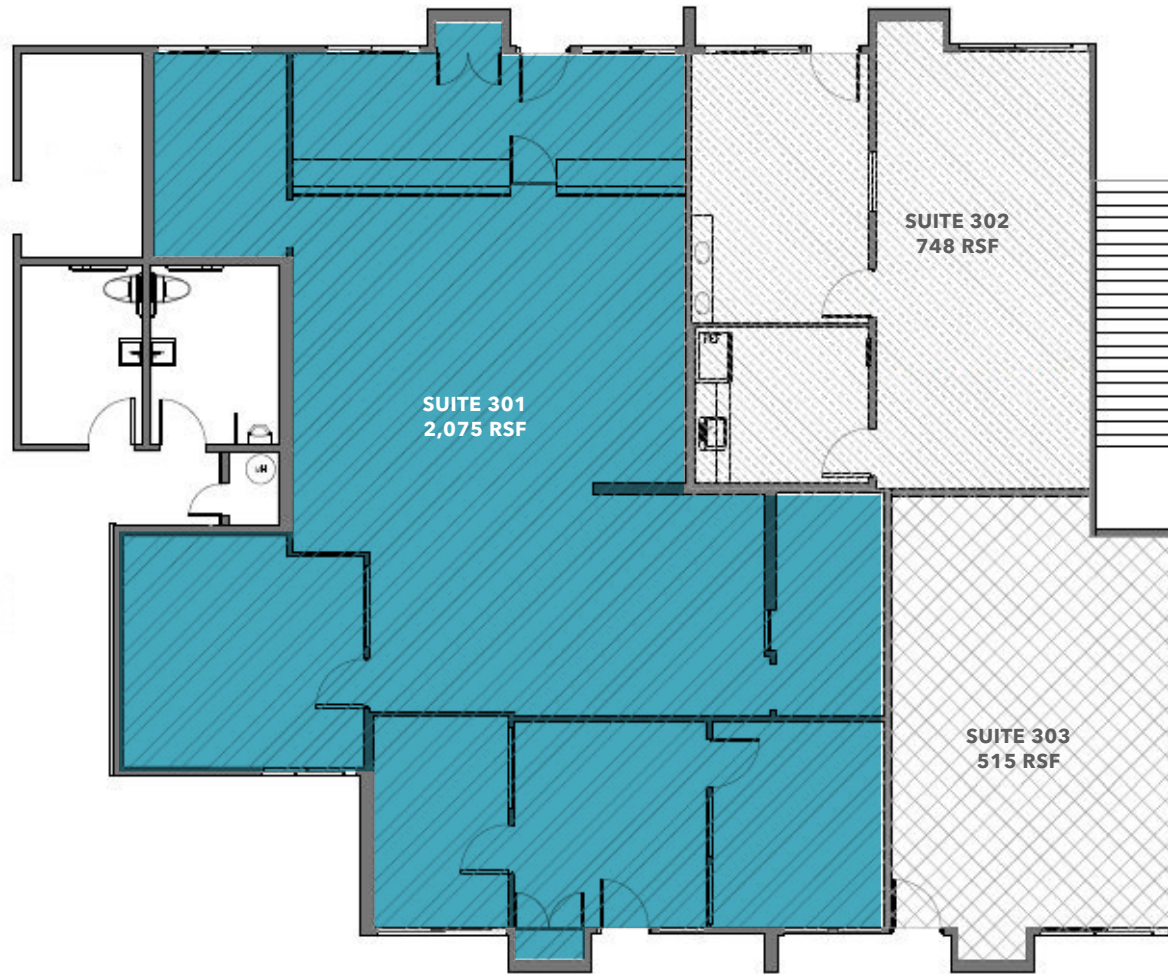
km Kidder Mathews

FOR LEASE

Floor Plans

3701 LONG BEACH BLVD, LONG BEACH, CA 90807

1st Floor - Suite 301



2,075 SF

AVAILABLE SPACE

1ST FLOOR KEY PLAN



KIDDER.COM

This information supplied herein is from sources we deem reliable. It is provided without any representation, warranty, or guarantee, expressed or implied as to its accuracy. Prospective Buyer or Tenant should conduct an independent investigation and verification of all matters deemed to be material, including, but not limited to, statements of income and expenses. Consult your attorney, accountant, or other professional advisor.

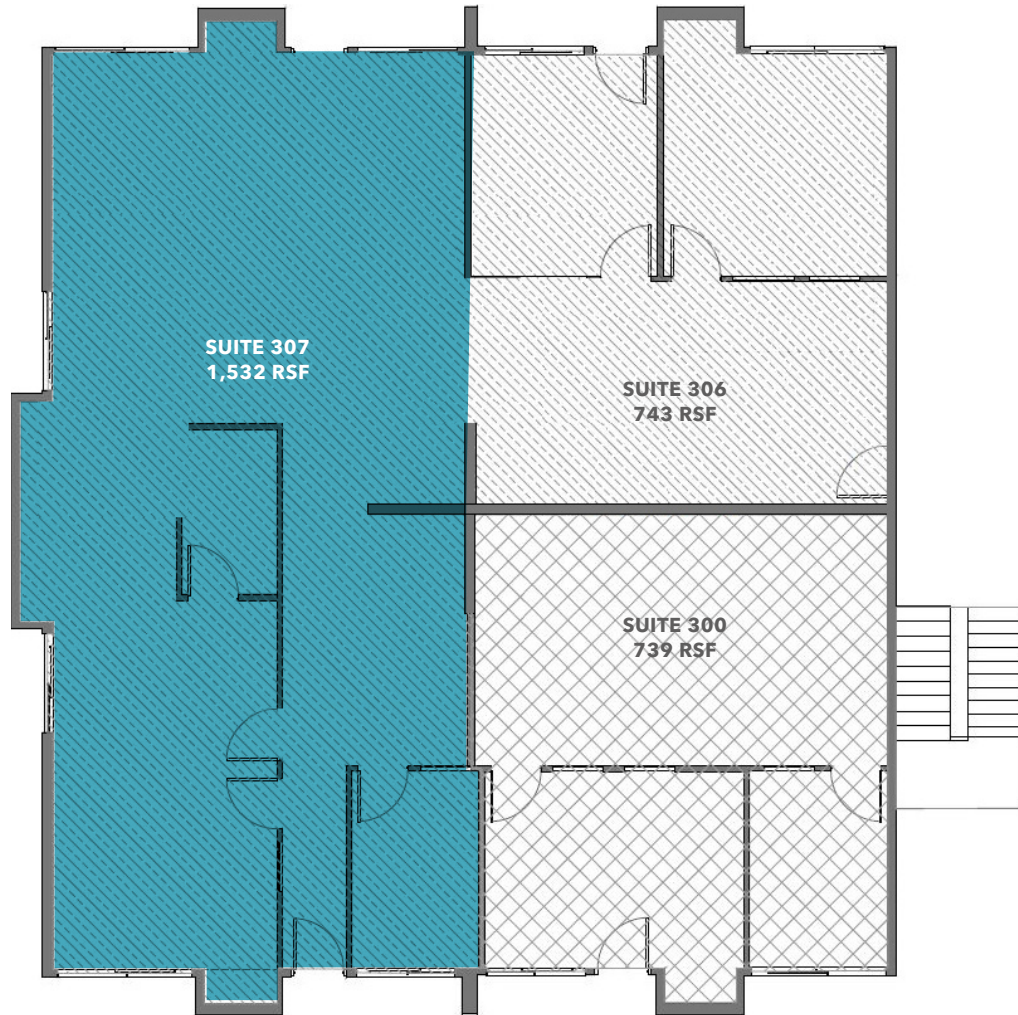
km Kidder
Mathews

FOR LEASE

Floor Plans

3701 LONG BEACH BLVD, LONG BEACH, CA 90807

1st Floor - Suite 306 & 307



1,532 SF

AVAILABLE SPACE

1ST FLOOR KEY PLAN



KIDDER.COM

This information supplied herein is from sources we deem reliable. It is provided without any representation, warranty, or guarantee, expressed or implied as to its accuracy. Prospective Buyer or Tenant should conduct an independent investigation and verification of all matters deemed to be material, including, but not limited to, statements of income and expenses. Consult your attorney, accountant, or other professional advisor.

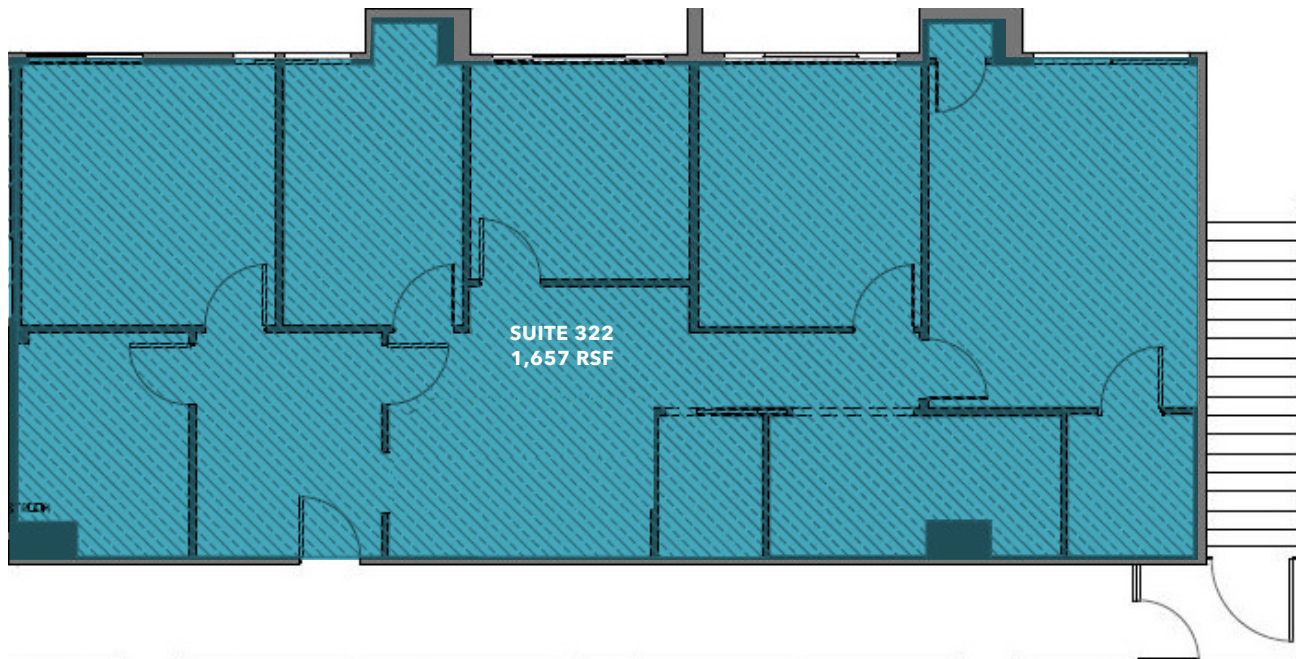
km Kidder
Mathews

FOR LEASE

Floor Plans

3701 LONG BEACH BLVD, LONG BEACH, CA 90807

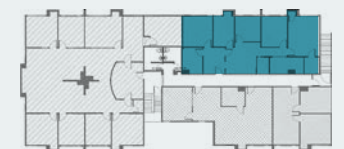
2nd Floor - Suite 322



1,657 SF

AVAILABLE SPACE

2ND FLOOR KEY PLAN



KIDDER.COM

This information supplied herein is from sources we deem reliable. It is provided without any representation, warranty, or guarantee, expressed or implied as to its accuracy. Prospective Buyer or Tenant should conduct an independent investigation and verification of all matters deemed to be material, including, but not limited to, statements of income and expenses. Consult your attorney, accountant, or other professional advisor.

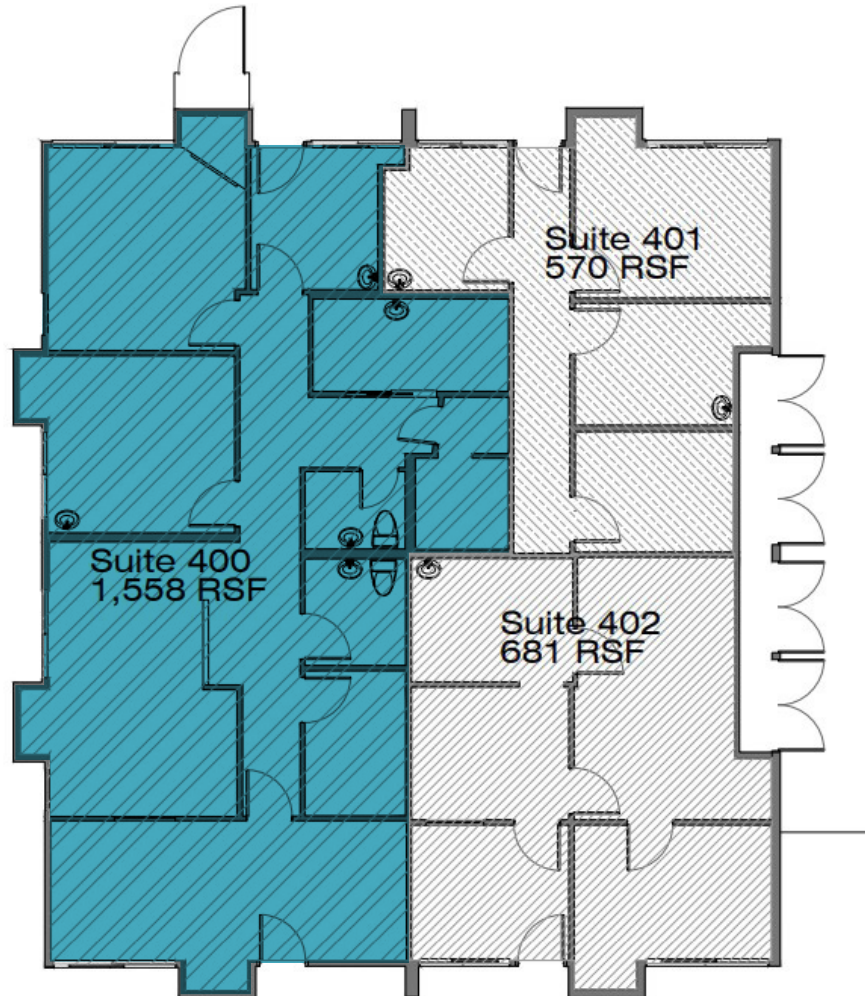
km Kidder Mathews

FOR LEASE

Floor Plans

3701 LONG BEACH BLVD, LONG BEACH, CA 90807

1st Floor - Suite 400



Suite 401
570 RSF

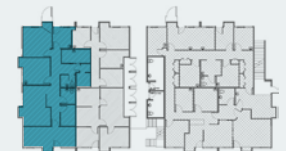
Suite 402
681 RSF

Suite 400
1,558 RSF

1,558 SF

AVAILABLE SPACE

1ST FLOOR KEY PLAN



KIDDER.COM

This information supplied herein is from sources we deem reliable. It is provided without any representation, warranty, or guarantee, expressed or implied as to its accuracy. Prospective Buyer or Tenant should conduct an independent investigation and verification of all matters deemed to be material, including, but not limited to, statements of income and expenses. Consult your attorney, accountant, or other professional advisor.

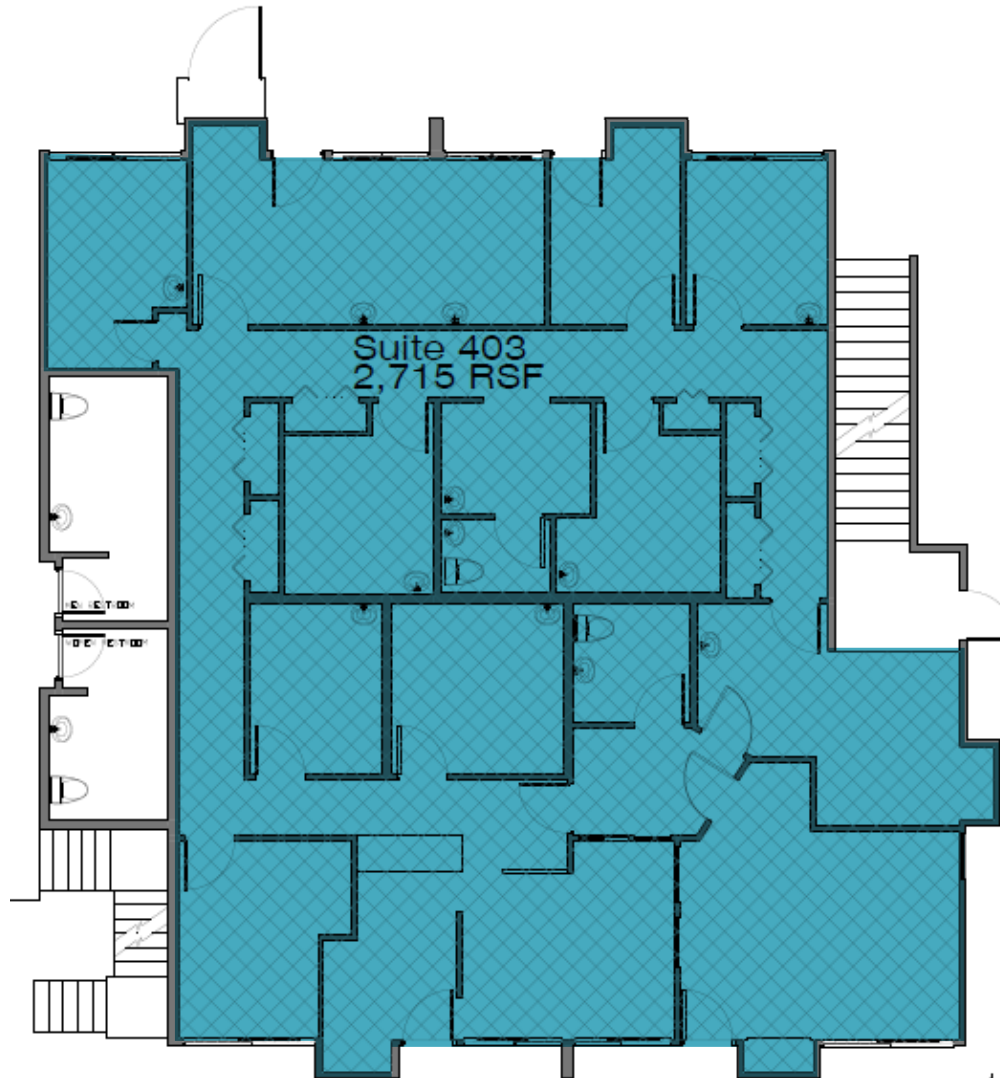
km Kidder
Mathews

FOR LEASE

Floor Plans

3701 LONG BEACH BLVD, LONG BEACH, CA 90807

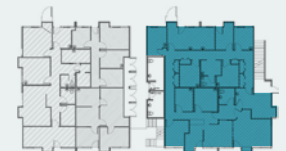
1st Floor - Suite 403



2,715 SF

AVAILABLE SPACE

1ST FLOOR KEY PLAN



KIDDER.COM

This information supplied herein is from sources we deem reliable. It is provided without any representation, warranty, or guarantee, expressed or implied as to its accuracy. Prospective Buyer or Tenant should conduct an independent investigation and verification of all matters deemed to be material, including, but not limited to, statements of income and expenses. Consult your attorney, accountant, or other professional advisor.

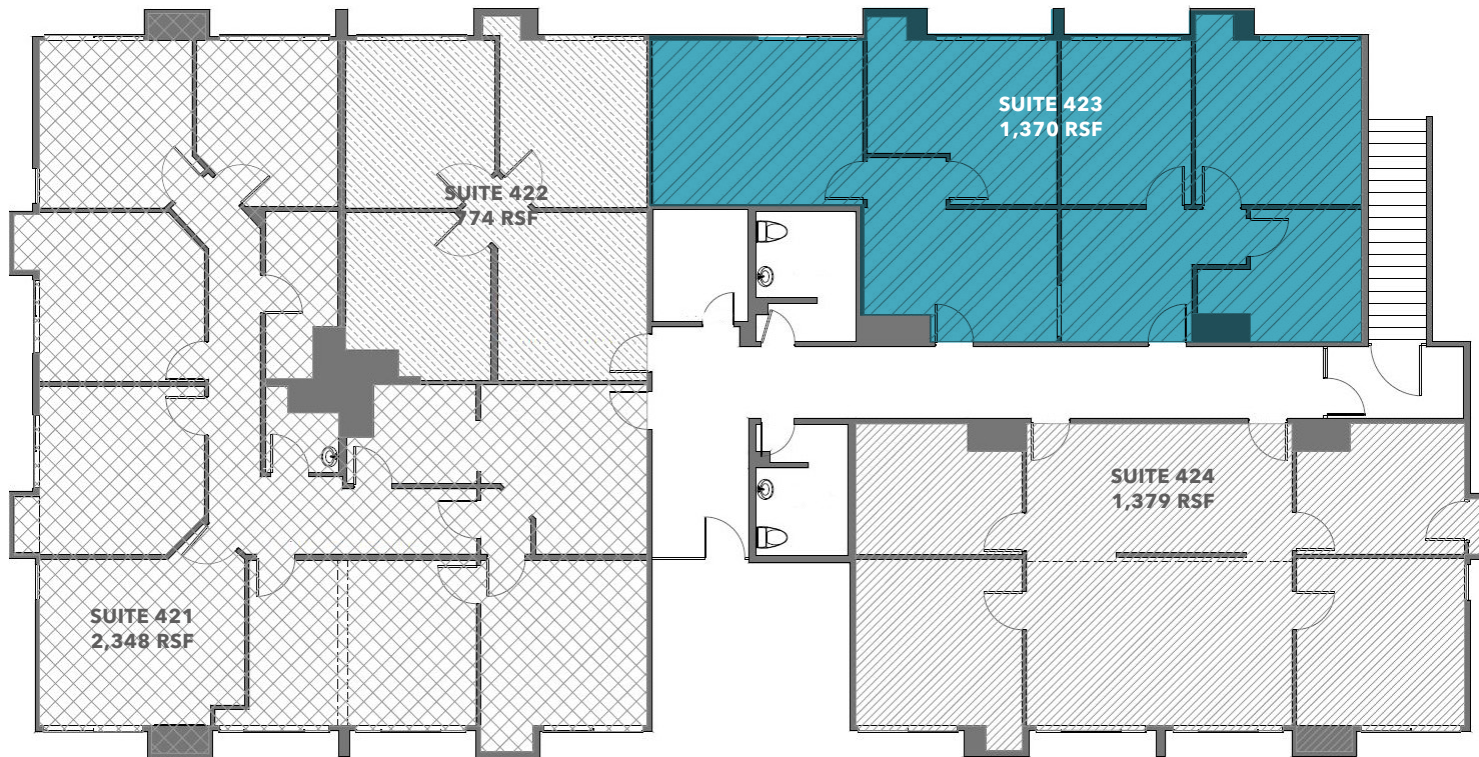
km Kidder
Mathews

FOR LEASE

Floor Plans

3701 LONG BEACH BLVD, LONG BEACH, CA 90807

2nd Floor - Suite 423



1,370 SF

AVAILABLE SPACE

2ND FLOOR KEY PLAN



KIDDER.COM

This information supplied herein is from sources we deem reliable. It is provided without any representation, warranty, or guarantee, expressed or implied as to its accuracy. Prospective Buyer or Tenant should conduct an independent investigation and verification of all matters deemed to be material, including, but not limited to, statements of income and expenses. Consult your attorney, accountant, or other professional advisor.

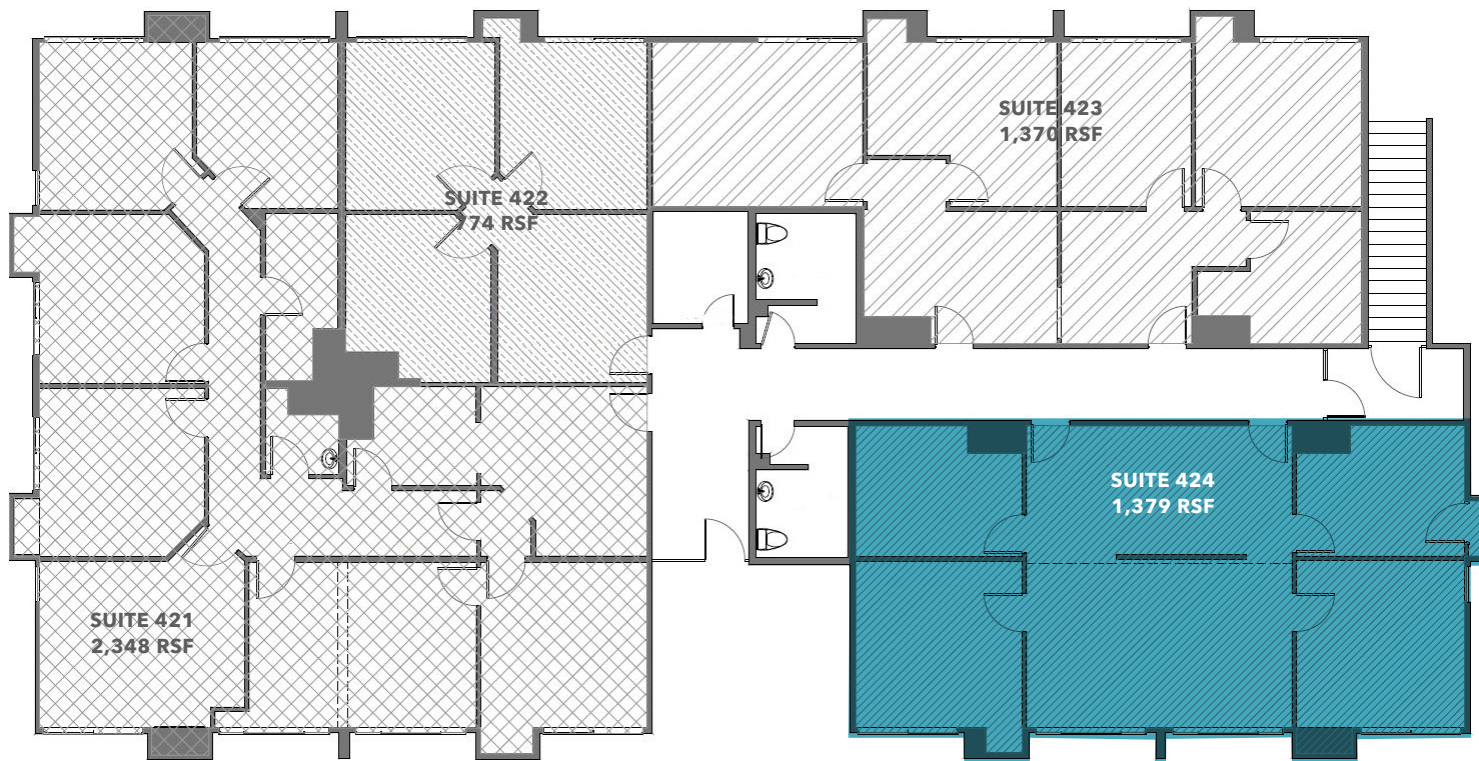
km Kidder Mathews

FOR LEASE

Floor Plans

3701 LONG BEACH BLVD, LONG BEACH, CA 90807

2nd Floor - Suite 424



1,379 SF

AVAILABLE SPACE

2ND FLOOR KEY PLAN



KIDDER.COM

This information supplied herein is from sources we deem reliable. It is provided without any representation, warranty, or guarantee, expressed or implied as to its accuracy. Prospective Buyer or Tenant should conduct an independent investigation and verification of all matters deemed to be material, including, but not limited to, statements of income and expenses. Consult your attorney, accountant, or other professional advisor.

km Kidder Mathews