

For Sale

CBRE

# 2221 East Murray Holladay Rd

Holladay, Utah

0.61 Acre Site



**For Sale**

2221 East Murray Holladay Road | Holladay, Utah



# Public

Zoning

# .61

Acres

# 1982

Year Built

## Property Information

### Specifications

Property Address 2221 East Murray Holladay Rd

Municipality Holladay, Utah

List Price \$925,000

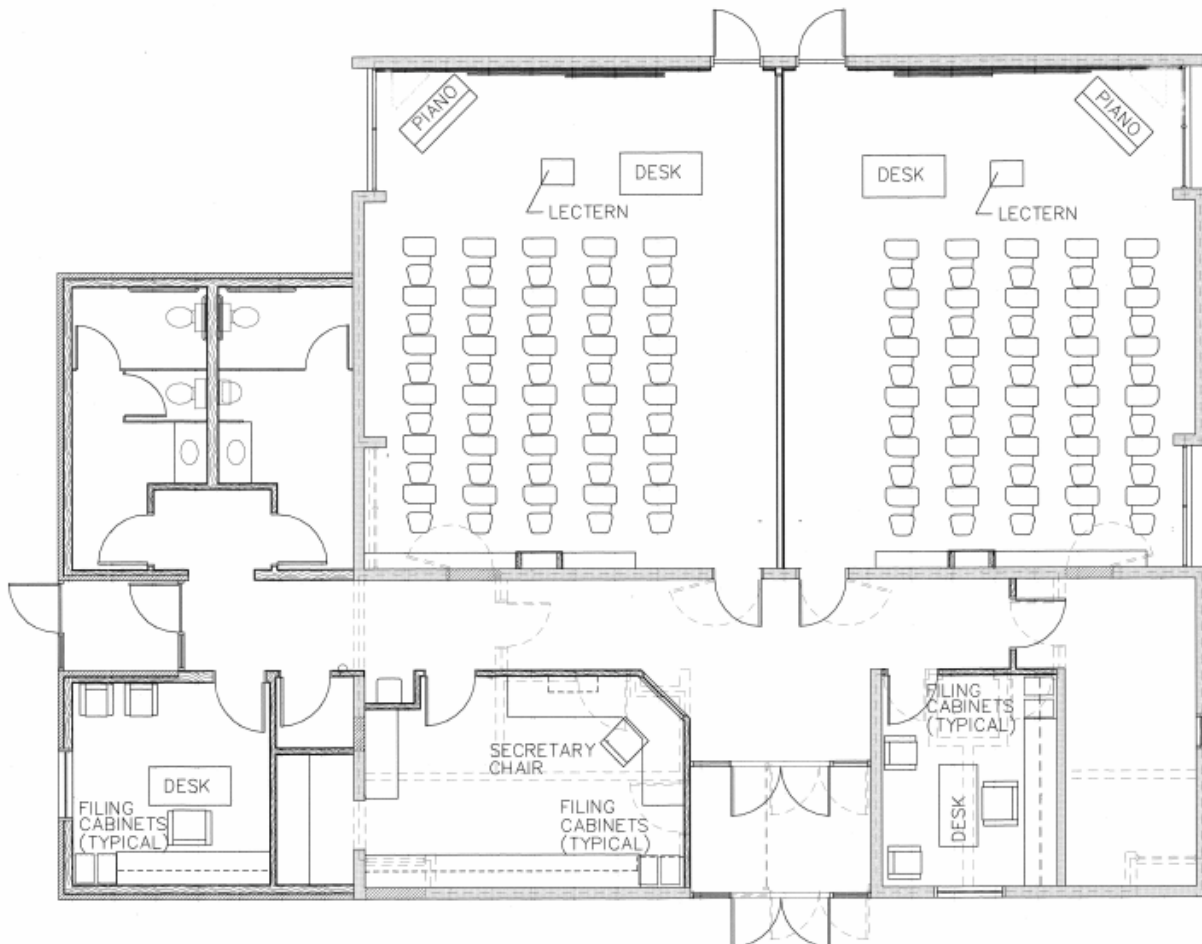
Building Square Feet 3,484 SF

Property Acreage 0.61

Zoning Code Public

### Zoning Description

*Zoning and allowed uses must be confirmed with city.*

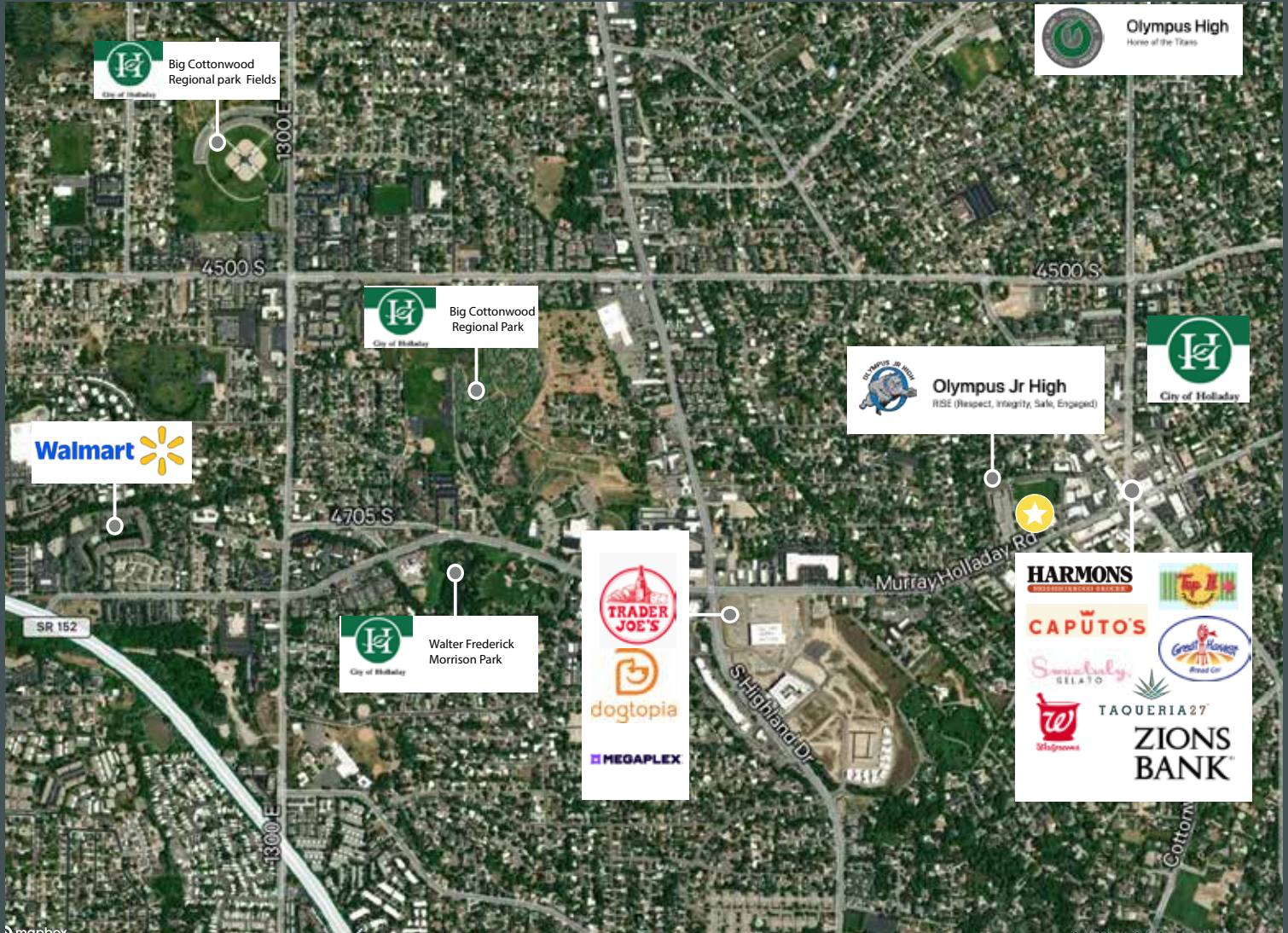


For Sale

2221 East Murray Holladay Road | Holladay, Utah

For Sale

# Area Map



## Contact Us

### Kreg Peterson

First Vice President  
+1 801 869 8092  
kreg.peterson@cbre.com

### Cole Bennee

Associate  
+1 +1 801 869 8098  
cole.bennee@cbre.com

### Erik Simper

Transaction Management Director  
+1 801 869 8016  
erik.simper@cbre.com

© 2025 CBRE, Inc. All rights reserved. This information has been obtained from sources believed reliable, but has not been verified for accuracy or completeness. You should conduct a careful, independent investigation of the property and verify all information. Any reliance on this information is solely at your own risk. CBRE and the CBRE logo are service marks of CBRE, Inc. All other marks displayed on this document are the property of their respective owners, and the use of such logos does not imply any affiliation with or endorsement of CBRE. Photos herein are the property of their respective owners. Use of these images without the express written consent of the owner is prohibited.