

**FOR  
LEASE**

**2362 MARITIME DR  
ELK GROVE, CA**

**±2,292 SF OFFICE SPACE AVAILABLE**



**3D Tour  
Click Here**



**CHASE BURKE**  
916.705.8132  
CHASE@ROMECPRE.COM  
DRE: 01879336

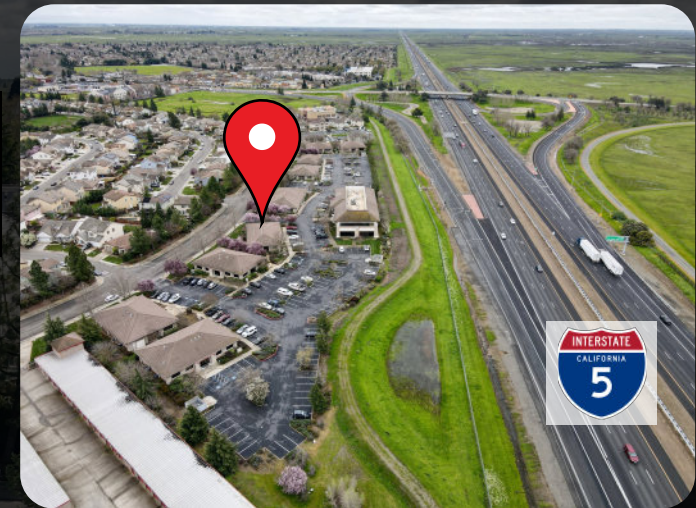
**ANDY JONSSON**  
916.813.8409  
ANDY@ROMECPRE.COM  
DRE: 02076108

**ROME**  
REAL ESTATE GROUP

# MARITIME PLAZA

"TURN-KEY" OFFICE SPACE FOR LEASE

FOR LEASE	SIZE	LEASE RATE
Suite 100	±2,292 SF	\$2.35 PSF, FSG



## PROPERTY HIGHLIGHTS:

- **Great Location:** Just 0.8 miles from Interstate 5 and minutes from shopping centers and amenities.
- **Modern Office Spaces:** Class "B" Office building with a well-designed layout, including open spaces, private rooms, bathroom, and storage.
- **Convenient Accessibility:** Easily accessible from major roadways, ensuring a smooth commute for employees and clients.
- **Ample Parking:** 16 surface parking spaces provide hassle-free parking for staff and visitors.
- **Thriving Business Environment:** Located in a growing Elk Grove community with strong demand for medical and office space.



PROPERTY ZONING

MP

SACRAMENTO COUNTY



AVERAGE

\$113,283

WITHIN 5 MILES

HOUSEHOLD INCOME



**STRONG  
TRAFFIC COUNTS**

I-5: 93,385 ADT

ELK GROVE BLVD:

93,000 ADT

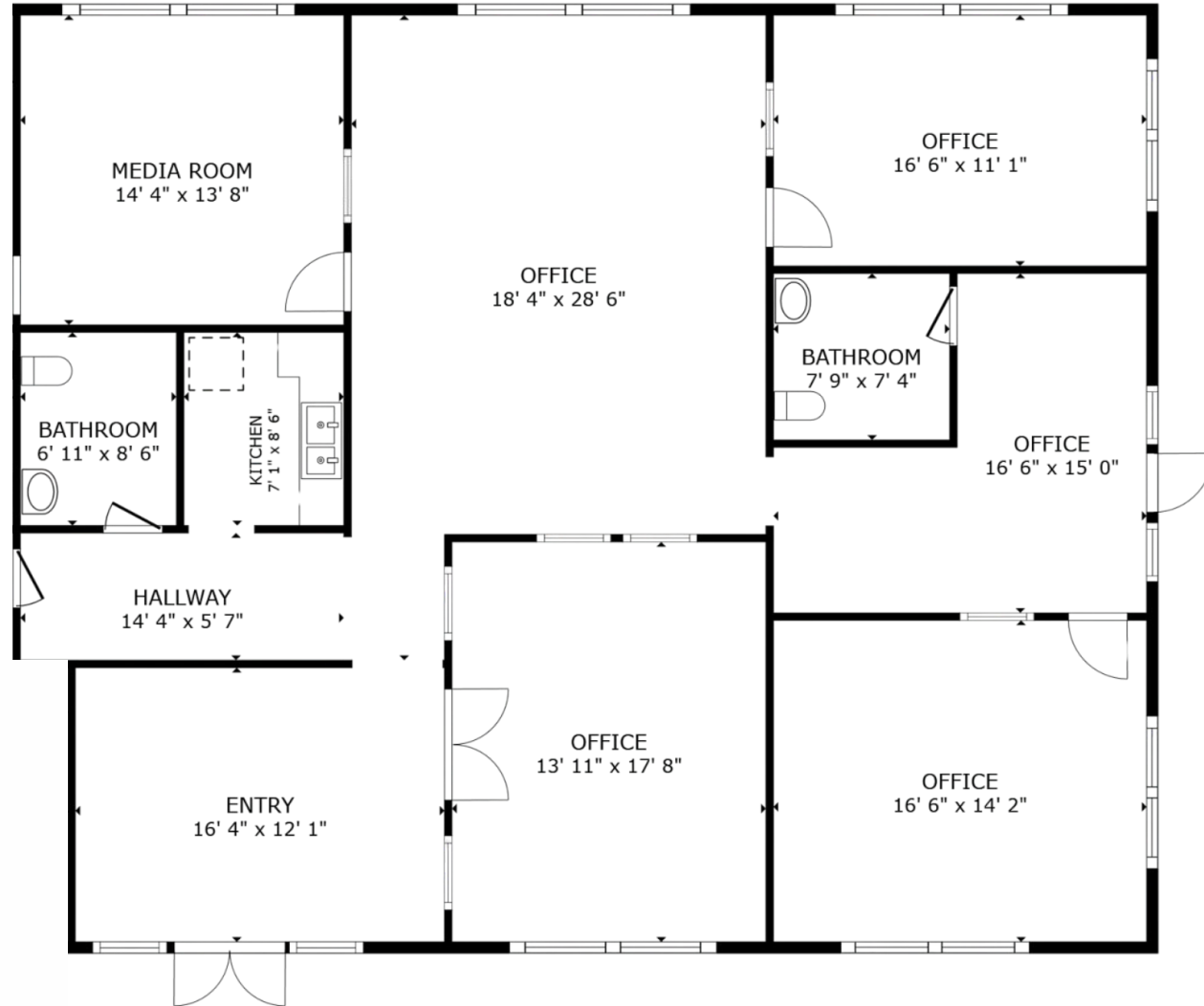
**SUITE 100:**  
**± 2,292 SQ. FT.**

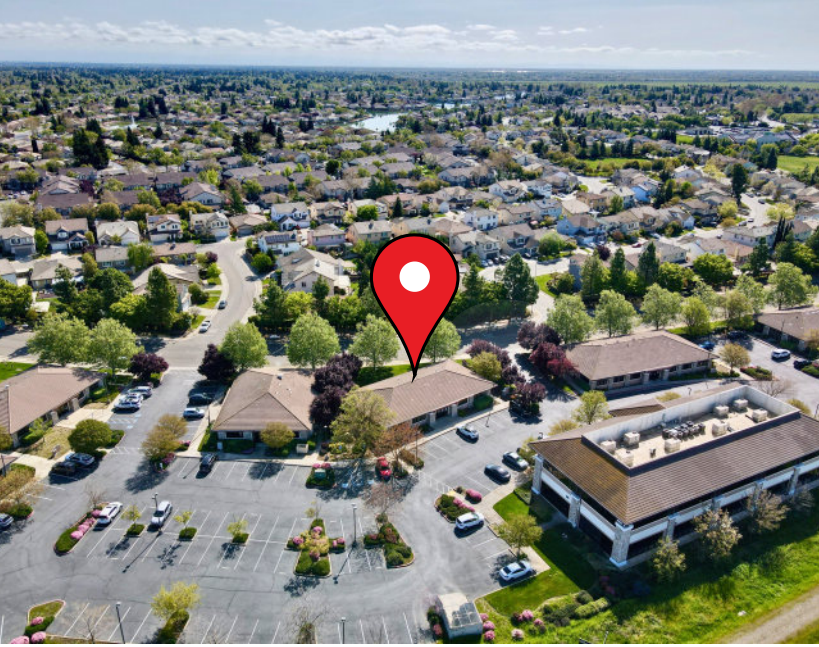
**\$2.35 PSF, FSG**

**3D Tour**  
**Click Here** 

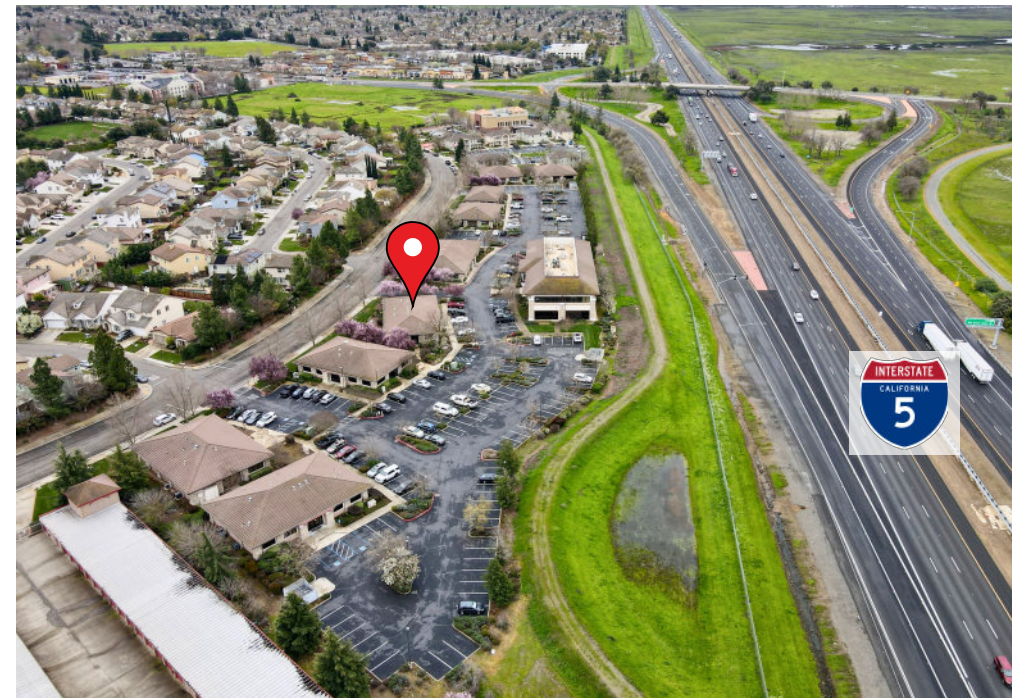


**INTERIOR PHOTOS**





# EXTERIOR PHOTOS



# IMMEDIATE VICINITY AERIAL



CONSUMNES RIVER BLVD

target sam's club

HOBBY LOBBY RC Willey  
Walmart  
Chick-fil-A jamba

EST. 1970  
COSUMNES RIVER COLLEGE



BRUCEVILLE RD

FRANKLIN BLVD

TACO BELL Wendy's Shell KFC Chevron

target Michael's  
Total Wine & MORE  
Party City

PROPERTY LOCATION



LAGUNA BLVD

Holiday Inn Express AN IHG HOTEL ARCO  
Rescate coffee McDonald's Huckleberry's ORIGINAL Pete's DONUTS Kacie's  
Smog'N'go PIZZA PASTA GRILL Chevron Shell

SAFeway BEL AIR ROUND TABLE PIZZA ROYALTY  
CVS pharmacy Jack in the box W

ELK GROVE BLVD

CALIFORNIA NORTHSTATE UNIVERSITY  
OZ KOREAN BBQ

Raley's SUPERCUTS  
CHIPOTE STARBUCKS

TRADER JOE'S COSTCO WHOLESALE KOHL'S

# DEMOGRAPHIC SUMMARY REPORT

2362 MARITIME DR, ELK GROVE, CA 95758



## POPULATION 2024 ESTIMATE

1-MILE RADIUS 11,033  
5-MILE RADIUS 179,755  
10-MILE RADIUS 574,827

## POPULATION 2029 PROJECTION

1-MILE RADIUS 11,047  
5-MILE RADIUS 180,898  
10-MILE RADIUS 578,634



## HOUSEHOLD INCOME 2024 AVERAGE

1-MILE RADIUS \$152,605.00  
5-MILE RADIUS \$113,283.00  
10-MILE RADIUS \$105,111.00

## HOUSEHOLD INCOME 2024 MEDIAN

1-MILE RADIUS \$124,454.00  
5-MILE RADIUS \$94,483.00  
10-MILE RADIUS \$83,885.00



## POPULATION 2024 BY ORIGIN

	1-MILE RADIUS	5-MILE RADIUS	10-MILE RADIUS
WHITE	3,326	40,908	160,503
BLACK	1,268	25,175	68,496
HISPANIC ORIGIN	2,030	44,181	156,601
AM.INDIAN & ALASKAN	64	1,798	7,168
ASIAN	3,856	59,512	162,283
HAWAIIAN/PACIFIC ISLAND	86	3,864	10,298
OTHER	2,432	48,499	166,079

# CONTACT US!

TO LEARN MORE ABOUT  
THIS OFFICE SUITE



*Chase Burke*

PARTNER | RETAIL BROKERAGE  
AND INVESTMENT SALES

916.705.8132

chase@romecre.com

DRE: 01879336



(916) 932-2199



CHASE@ROMECPRE.COM

ANDY@ROMECPRE.COM



@ROMECPREGROUP



2901 K STREET, SUITE 306, SACRAMENTO, CA 95816

101 PARKSHORE DRIVE, SUITE 100, FOLSOM, CA 95630



*Andy Jonsson*

PARTNER | RETAIL BROKERAGE  
AND INVESTMENT SALES

916.813.8409

andy@romecre.com

DRE: 02076108

