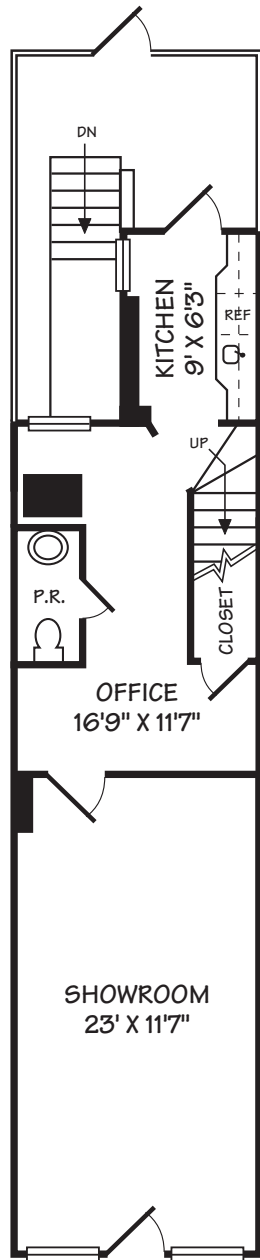


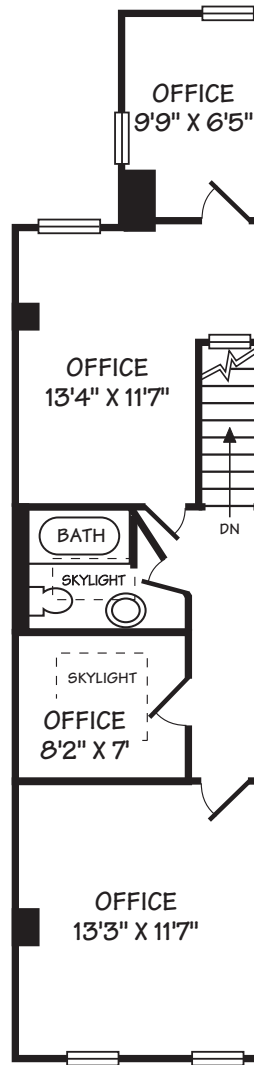
1411 H STREET NE, WASHINGTON, DC

©2023 B. SMITH

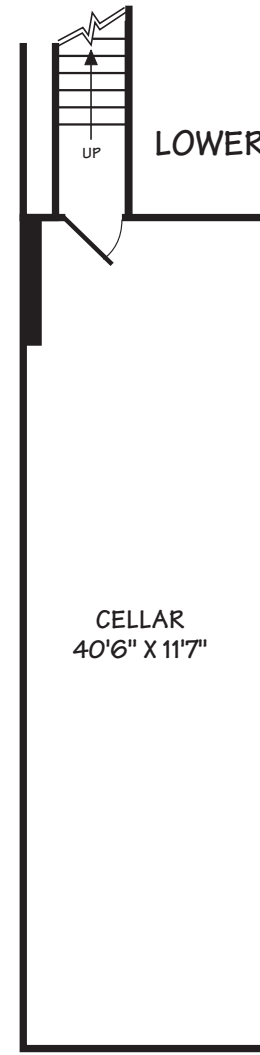
ALL ILLUSTRATIONS AND DIMENSIONS ARE APPROXIMATE AND MAY VARY FROM ACTUAL STRUCTURE. DIMENSIONS HAVE BEEN ROUNDED. ALL INFORMATION DEEMED RELIABLE BUT NOT GUARANTEED. WWW.INTERIORFOOTPRINTS.COM



FIRST FLOOR
10' CEILING



SECOND FLOOR
8'-11' VAULTED CEILINGS



LOWER FLOOR