



413 APPLGROVE ST NW
North Canton, Ohio 44720

AVAILABLE SF	5,225
WAREHOUSE SF	2,800
OFFICE SF	2,425
LEASE RATE	\$8.00/SF/NNN
CAM	\$2.25/SF
MONTHLY RATE	\$4,463.02
YEAR BUILT	1999
ZONING	NC-GBB

Property Details

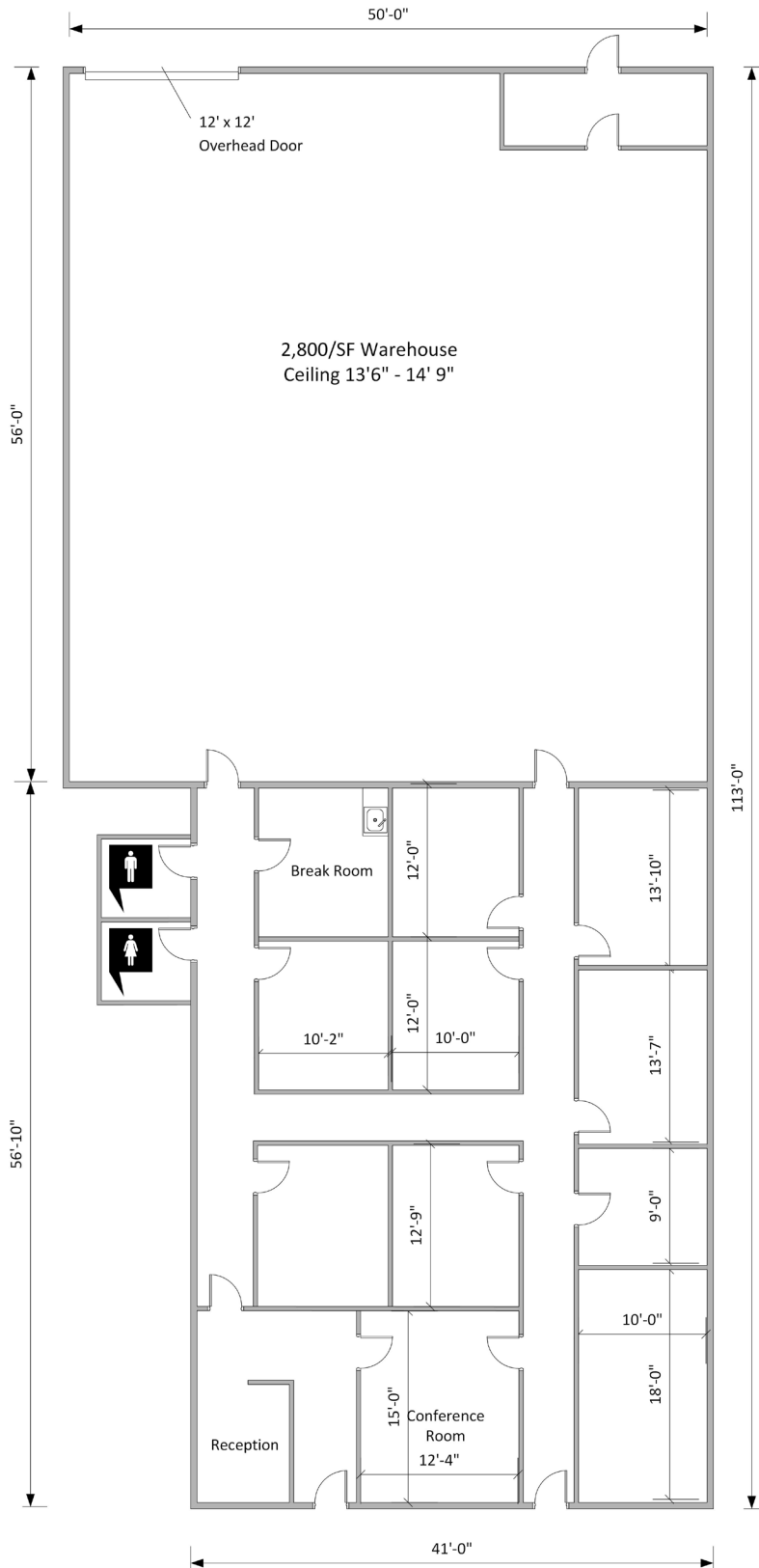
- 5,225/SF Flex space available for lease.
- Space consists of 9 offices, reception, conference room, and approximately 2,800/SF of warehouse.
- (1) 12 x 12 overhead door at rear of building.
- Great North Canton location with easy access to I-77 as well as restaurants and shopping.

Dan Spring, SIOR

P 330 497 6249
dan@naispring.com

Kelly Sober, CCIM

P 330 497 9837
kelly@naispring.com

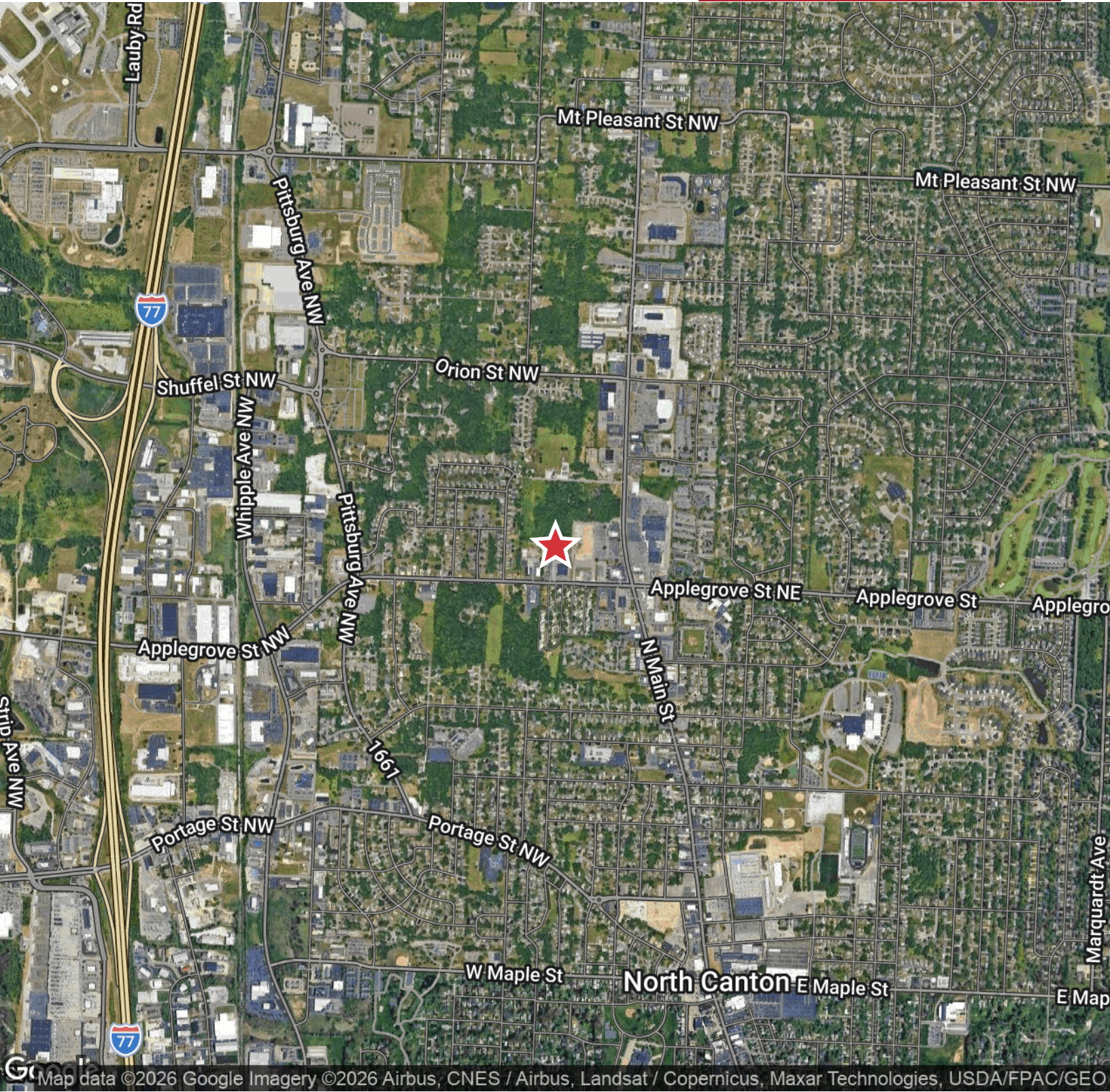


*DIMENSIONS ARE APPROXIMATE. THIS INFORMATION IS FROM RELIABLE SOURCES BUT IS NOT GUARANTEED AND IS SUBJECT TO CHANGE

NO WARRANTY OR REPRESENTATION, EXPRESS OR IMPLIED, IS MADE AS TO THE ACCURACY OF THE INFORMATION CONTAINED HEREIN, AND THE SAME IS SUBMITTED SUBJECT TO ERRORS, OMISSIONS, CHANGE OF PRICE, RENTAL OR OTHER CONDITIONS, PRIOR SALE, LEASE OR FINANCING, OR WITHDRAWAL WITHOUT NOTICE, AND OF ANY SPECIAL LISTING CONDITIONS IMPOSED BY OUR PRINCIPALS NO WARRANTIES OR REPRESENTATIONS ARE MADE AS TO THE CONDITION OF THE PROPERTY OR ANY HAZARDS CONTAINED THEREIN ARE ANY TO BE IMPLIED.

8234 Pittsburg Ave NW
North Canton, OH 44720
+1 330 966 8800
naispring.com

413 APPLGROVE ST NW
North Canton, Ohio 44720



Map data ©2026 Google Imagery ©2026 Airbus, CNES / Airbus, Landsat / Copernicus, Maxar Technologies, USDA/FPAC/GEO

NO WARRANTY OR REPRESENTATION, EXPRESS OR IMPLIED, IS MADE AS TO THE ACCURACY OF THE INFORMATION CONTAINED HEREIN, AND THE SAME IS SUBMITTED SUBJECT TO ERRORS, OMISSIONS, CHANGE OF PRICE, RENTAL OR OTHER CONDITIONS, PRIOR SALE, LEASE OR FINANCING, OR WITHDRAWAL WITHOUT NOTICE, AND OF ANY SPECIAL LISTING CONDITIONS IMPOSED BY OUR PRINCIPALS NO WARRANTIES OR REPRESENTATIONS ARE MADE AS TO THE CONDITION OF THE PROPERTY OR ANY HAZARDS CONTAINED THEREIN ARE ANY TO BE IMPLIED.

8234 Pittsburg Ave NW
North Canton, OH 44720
+1 330 966 8800
naispring.com