

THE EISENHOWER

290 W. Mount Pleasant Avenue | Livingston, NJ

NEW COWORKING SPACE AVAILABLE

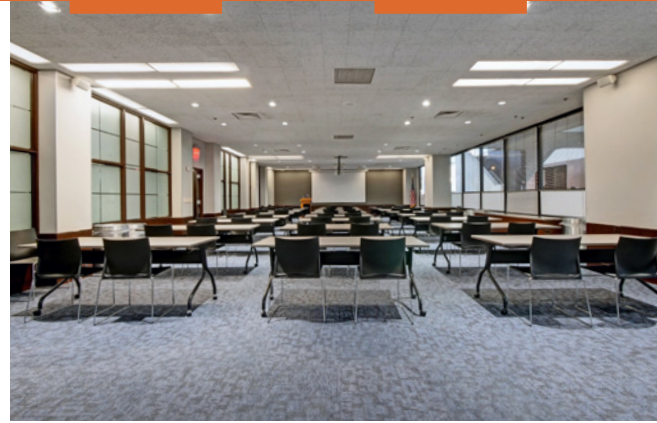
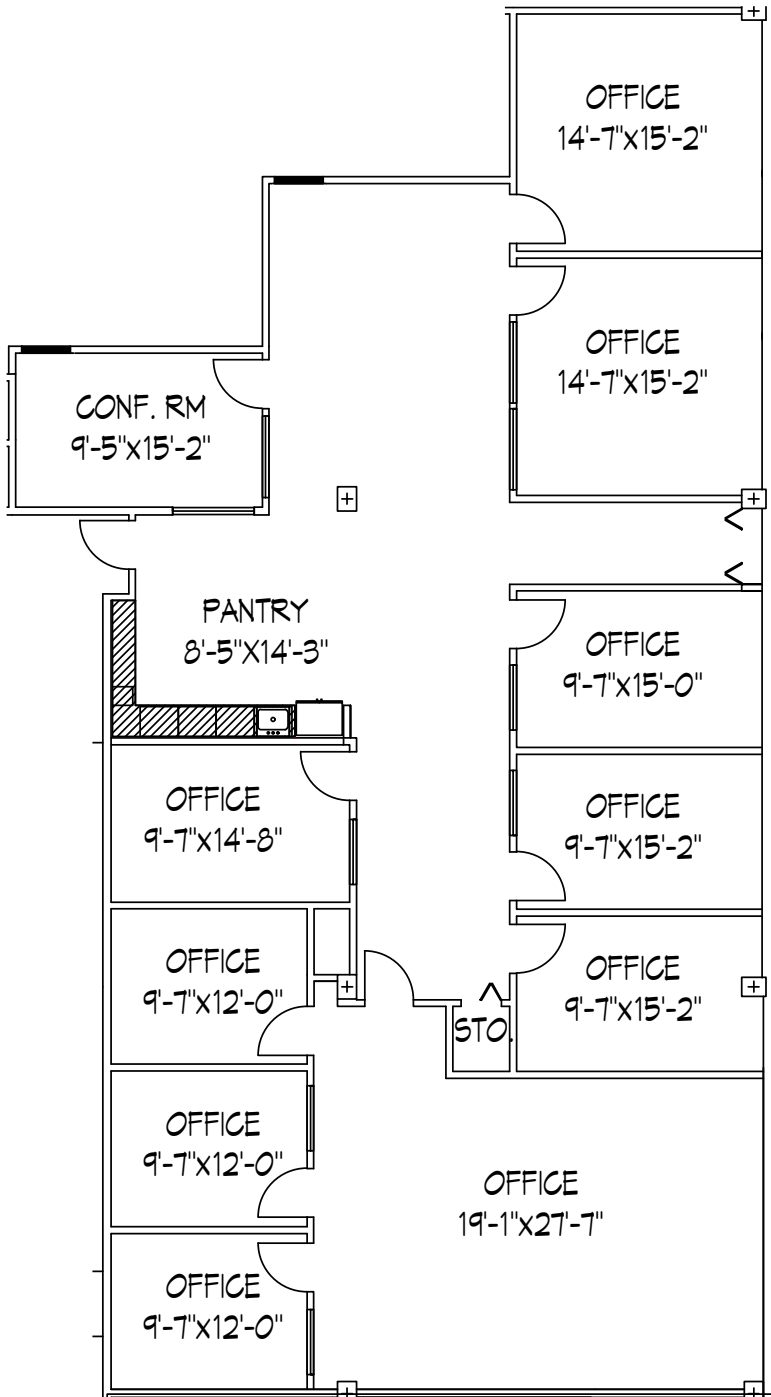
**BIG AMENITIES
FOR
SMALL TENANTS**

CBRE

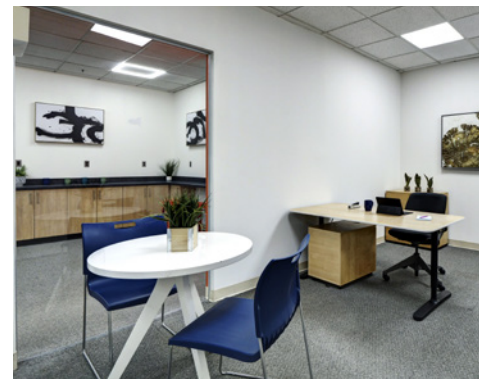
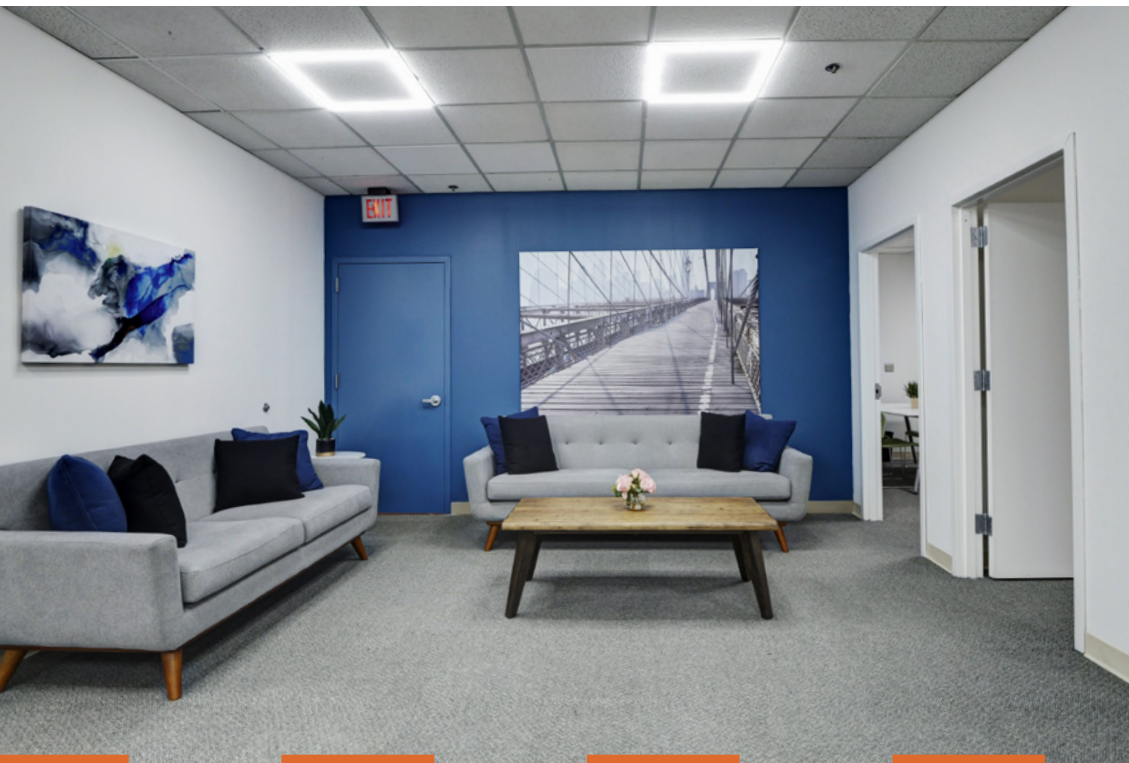
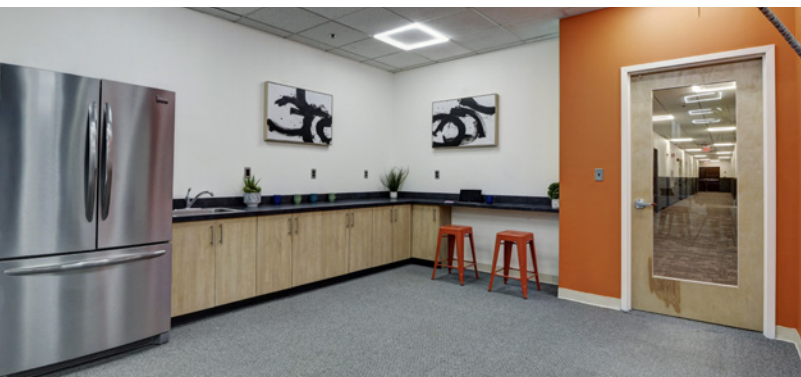
OFFERING A MULTITUDE OF ON-SITE AND WALKABLE AMENITIES
TO SERVE THE NEEDS OF TODAY'S OFFICE USER.

AVAILABLE COWORKING SPACE

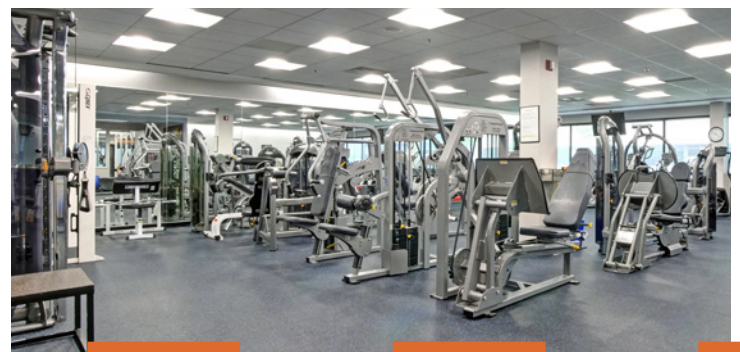
FLOORPLAN



AVAILABLE COWORKING SPACE



FEATURES



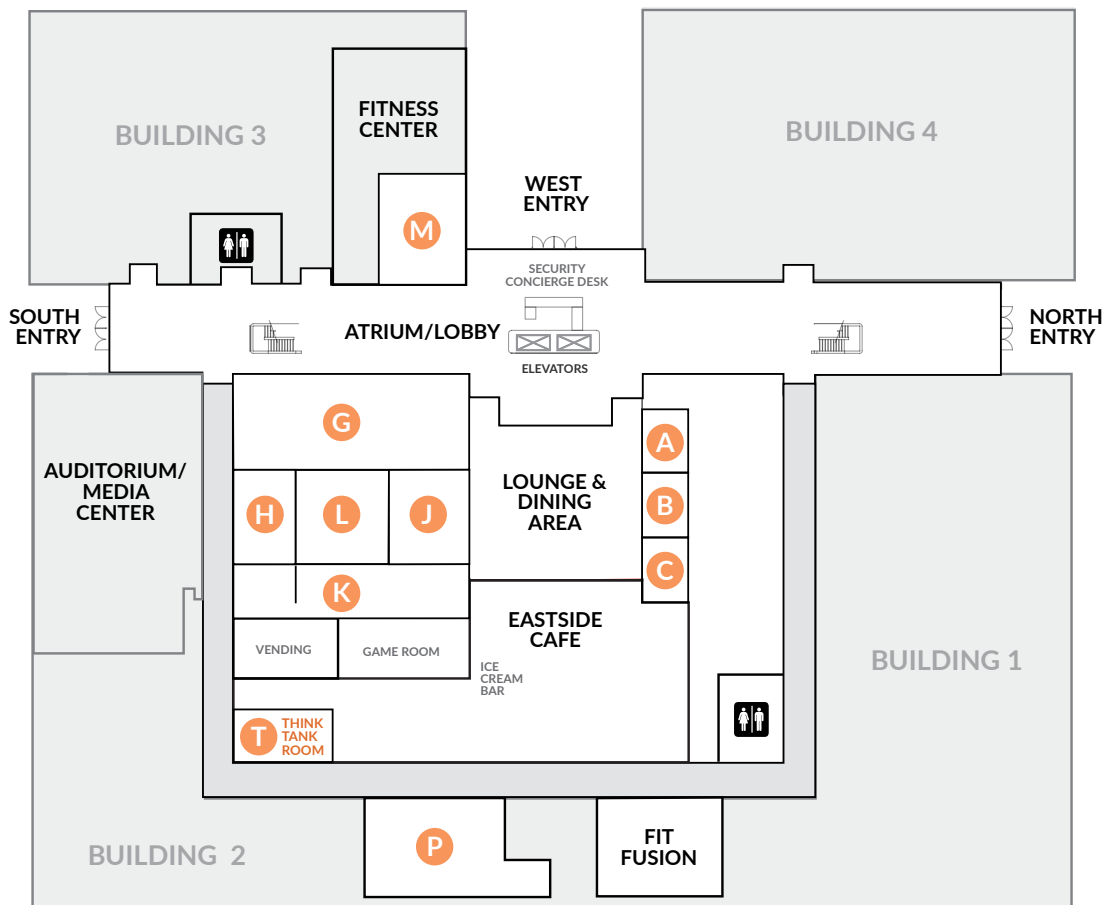
- Powered in part by an on-site solar panel field and is **LEED Silver** and **Energy Star** certified.
- Long-term, local ownership with on-site management & security.
 - Built, owned and managed by **Eastman Companies**.
 - Forty-five year old, third generation Livingston-based landlord with a **1.5 MSF** portfolio and **8 MSF** developed.
- Fitness oasis.
- Lobby recently renovated.
- Extensive conference facilities.
- Adjacent walkable amenities including **Starbucks**, **Shake Shack** and **Blaze Pizza**. Accessible via new **retail walkway**.
- Immediate access to retail including **The Shoppes at Livingston Circle** featuring **Aldi**, **Blu Alehouse**, **Ike's Bagels** and **Paris Baguette**.

AMENITIES

UNPARALLELED ON-SITE AMENITIES:

- Extensive conference facilities including state-of-the-art 220 person auditorium, 10-60 person conference rooms, and breakout rooms (Total of 10 rooms)
- Full-service cafeteria with on-site catering
- 4 new electric car charging stations with an additional 8 coming soon
- Fitness oasis with on-site gym, personal training, spin room, Dink Pad for pickleball and boot camp classes
- 4+ per 1,000 SF parking ratio including parking deck and covered executive parking
- Game room
- Outdoor dining areas
- New co-working suites available
- Rotating program of tenant appreciation events

FIRST FLOORPLAN



AREA AMENITIES



Onsite Amenities

- Eastside Café
- Personal Training with *It's Beyond Fitness*
- Full Service Gym
- Conference Center with Multiple Conference Rooms
- 200 Seat Auditorium
- Game Room
- Electric Car Chargers
- Covered Parking
- Generator Capacity Available

JON MEISEL

Senior Vice President

+1 732 509 2843

jonathan.meisel@cbre.com

DAN CASEY

First Vice President

+1 201 712 5808

dan.casey@cbre.com

ERIN WENZLER

Vice President

+1 201 712 5893

erin.wenzler@cbre.com



© 2024 CBRE, Inc. All rights reserved. This information has been obtained from sources believed reliable but has not been verified for accuracy or completeness. CBRE, Inc. makes no guarantee, representation or warranty and accepts no responsibility or liability as to the accuracy, completeness, or reliability of the information contained herein. You should conduct a careful, independent investigation of the property and verify all information. Any reliance on this information is solely at your own risk. CBRE and the CBRE logo are service marks of CBRE, Inc. All other marks displayed on this document are the property of their respective owners, and the use of such marks does not imply any affiliation with or endorsement of CBRE. Photos herein are the property of their respective owners. Use of these images without the express written consent of the owner is prohibited.