

# Pacific Corporate Center

10398 Pacific Center Court, San Diego, CA



## Reinvented Workplace Highlights



Approximately  
32,087 SF Available



30 ft Clear Height  
with Grade & Dock High  
Loading



Spec Laboratory  
Improvements



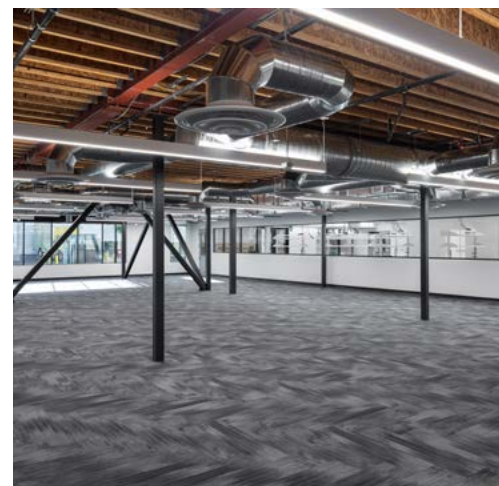
Part of a 1,500,000 SF  
Scalable Portfolio



Situated in Sorrento  
Mesa Among the Most  
Innovative Life Science  
Companies



Indoor/Outdoor  
Connectivity for  
Collaboration & Lounge  
Space



# Project Specifications

- Dock-high and grade level loading
- Slab-to-slab height:  
First floor - 30 ft 2 in  
Second floor - 16 ft 8 in
- 2500 Amps
- 480/277 Volts, 3 phase
- 300 - 350 kw generator 480 volts, 3 phase
- 2.8/1,000 parking ratio
- Fully sprinklered

# Project Amenities

- Shared large collaboration and break room
- Training center for up to 50+ people
- Boardroom and conferencing center for up to 20+ people
- Showers and lockers
- Private restrooms
- Building signage available

