



4160 Piedmont Pkwy.

Greensboro, North Carolina 27292

Property Information

- Available: Suite 113 | ±1,389 SF
- Heart of the Triad Location
- Easy access to Wendover Ave., Hwy 68, I-40 & Hwy 311. Ten minutes from PTI Airport
- Building recently renovated
- Fiber optics to building
- Dedicated key card access
- Surface Parking – Ratio: 4.14/1000 RSF
- Monument Signage
- Variety of shopping and dining options nearby
- 2021 Demographics

	1 Mile	3 Miles	5 Miles
Population	2,943	40,252	106,480
Households	1,511	17,645	46,052
Avg. HH Income	\$75,764	\$84,036	\$80,914



For more information, contact:

Nancy Cox

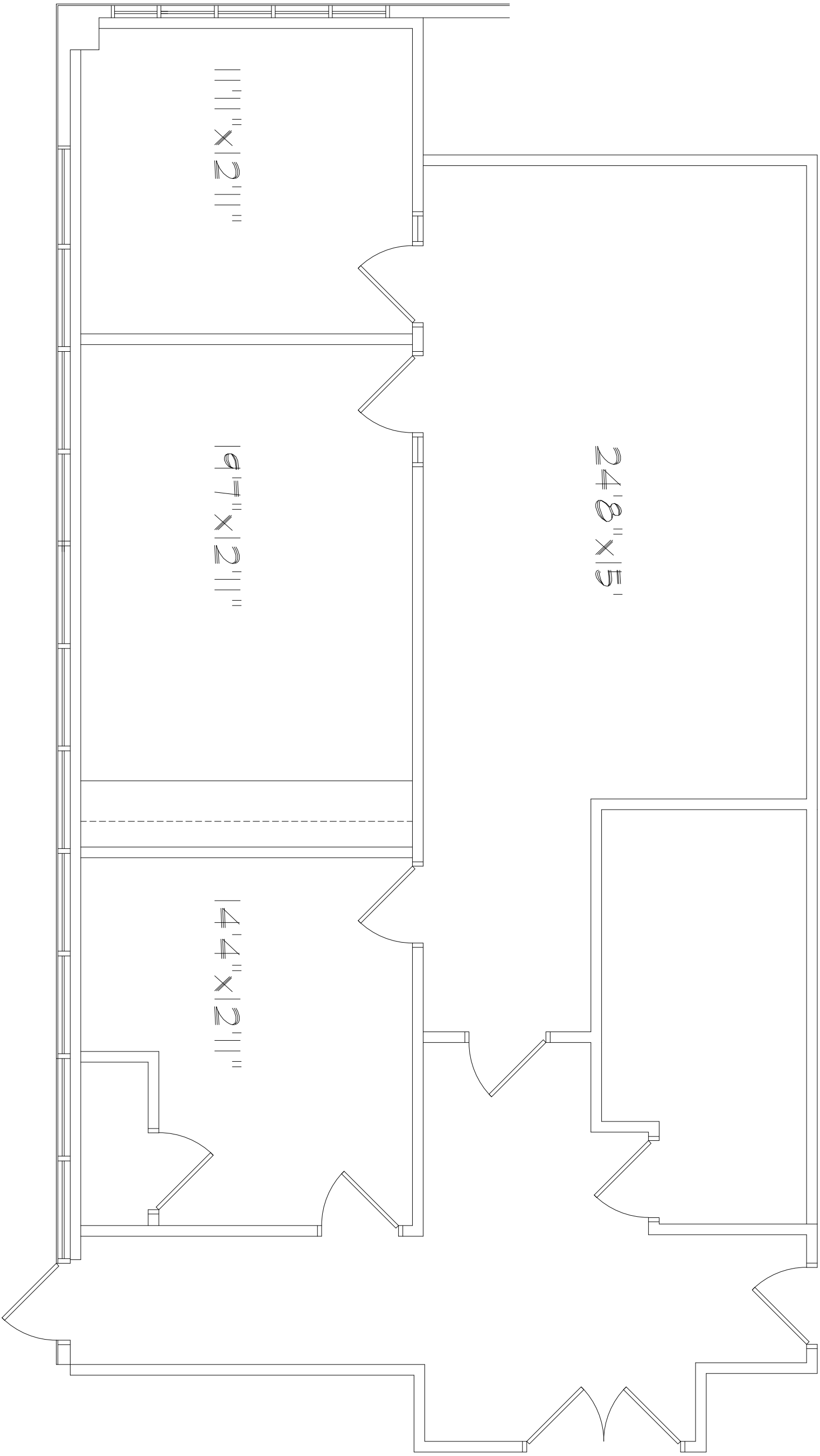
+1 336 686 5388 • ncox@naipt.com

NO WARRANTY OR REPRESENTATION, EXPRESS OR IMPLIED, IS MADE AS TO THE ACCURACY OF THE INFORMATION CONTAINED HEREIN, AND THE SAME IS SUBMITTED SUBJECT TO ERRORS, OMISSIONS, CHANGE OF PRICE, RENTAL OR OTHER CONDITIONS, PRIOR SALE, LEASE OR FINANCING, OR WITHDRAWAL WITHOUT NOTICE, AND OF ANY SPECIAL LISTING CONDITIONS IMPOSED BY OUR PRINCIPALS NO WARRANTIES OR REPRESENTATIONS ARE MADE AS TO THE CONDITION OF THE PROPERTY OR ANY HAZARDS CONTAINED THEREIN ARE ANY TO BE IMPLIED.

348 N. Elm Street
Greensboro, North Carolina 27401

+1 336 373 0995

naipt.com



4160 PIEDMONT PARKWAY

