

Office/Warehouse | For Lease

11842 S 33rd W Ave | Sapulpa, OK 74107

WIGGIN
PROPERTIES, LLC



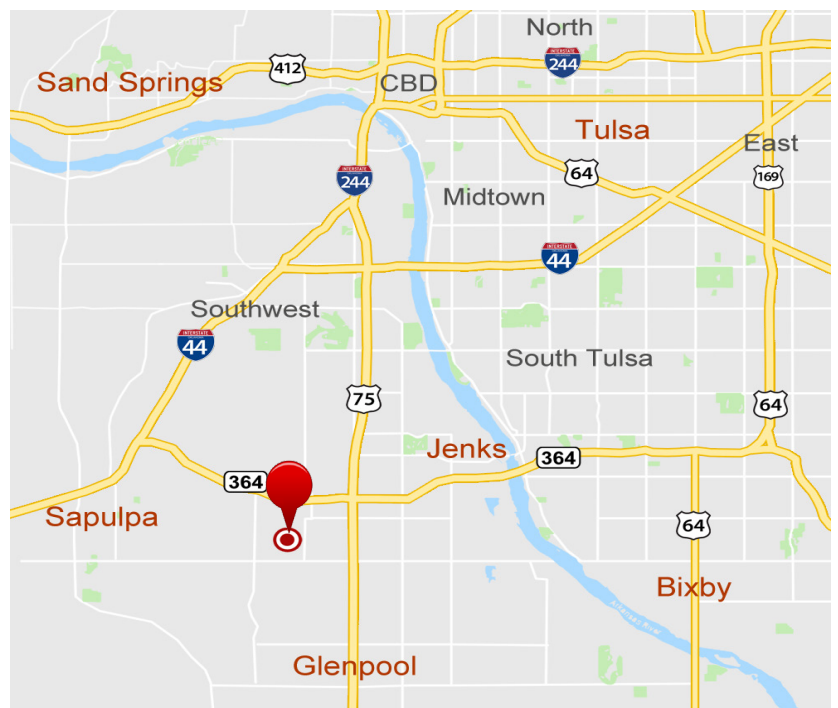
Available Space

±10,000 SF

±3,000 SF Office

Property Features

- Reception Area, (3) Offices, (3) Restrooms, and (1) Conference Room
- 3-Phase Power
- Partially Climate Controlled
- (1) 12'x12' Overhead Door
- (1) 12'x12' Dock Door With Leveler
- Partially Fenced; Shared Yard
- 21' Clear Height
- Zoned CG
- Built in 1996
- Ample Parking
- Can Be Combined With Adjacent Suite For Entire ±15,000 SF Building



John Watchous

Advisor

918.991.8519

jwatchous@wiginprop.com

Shawna Hale, CCIM

Advisor

918.282.8664

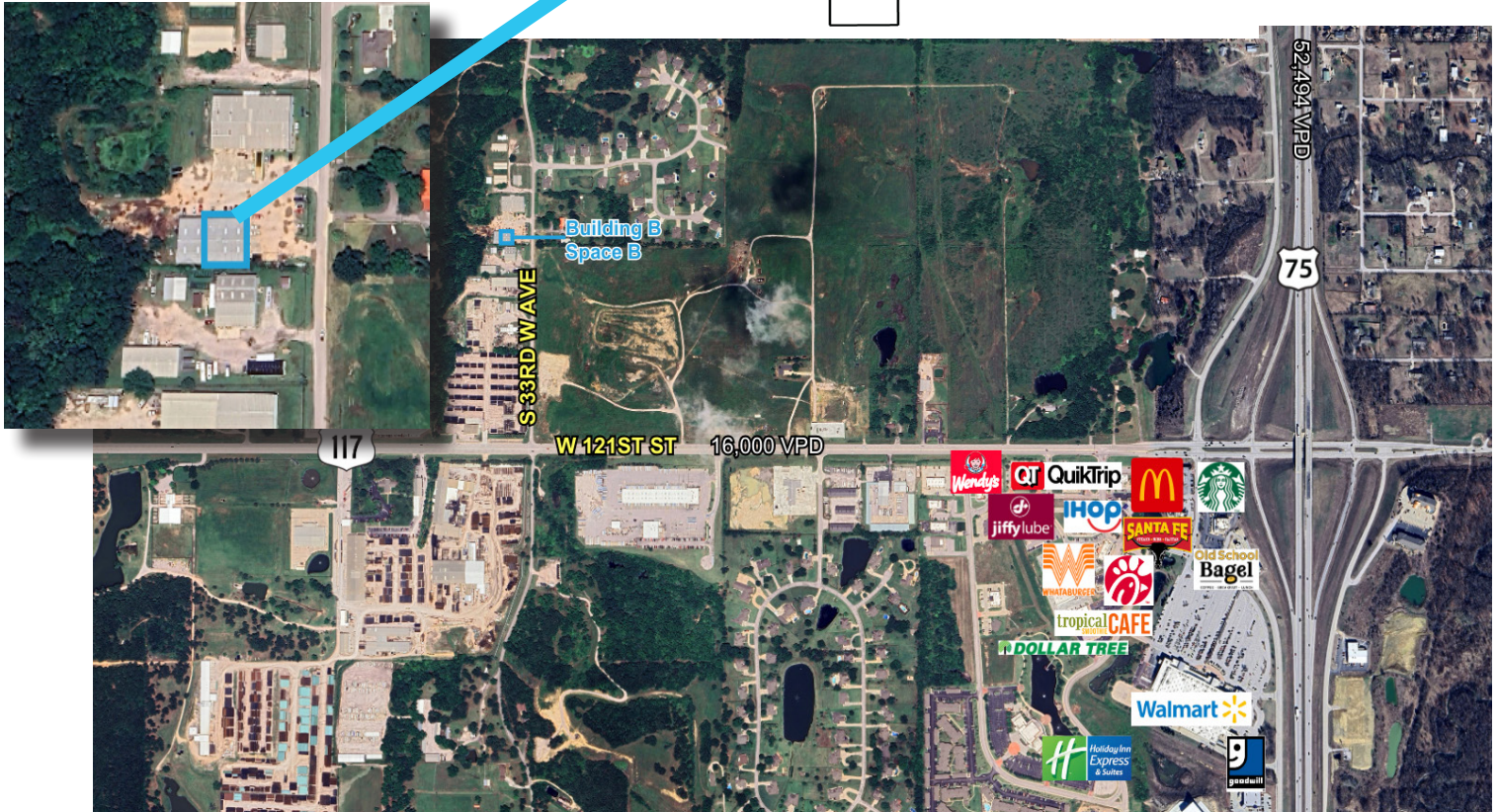
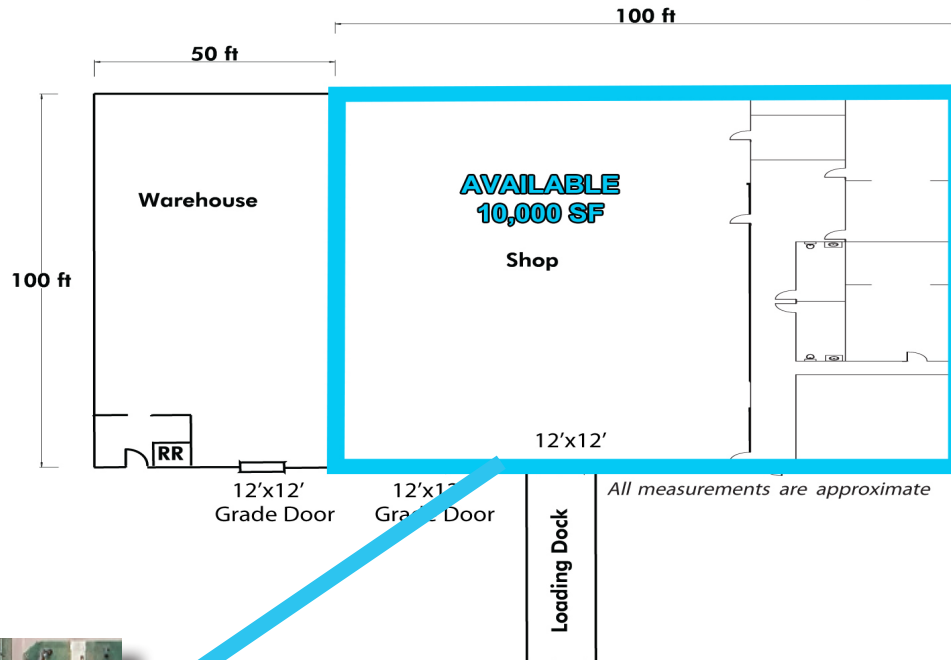
shale@wiginprop.com

Office/Warehouse | For Lease

11842 S 33rd W Ave | Sapulpa, OK 74107

WIGGIN

PROPERTIES, LLC



John Watchous

Advisor

918.991.8519

jwatchous@wigginprop.com

Shawna Hale, CCIM

Advisor

918.282.8664

shale@wigginprop.com

This material is provided for information purposes only. It is from sources believed to be reliable. However, Wiggin Properties makes no warranties or representations, expressed or implied, as to the accuracy or sufficiency of the information. It is presented subject to errors, omissions, changes or withdrawal without notice. Square footage is provided by the local County Assessor or the Owner. Photos and graphics with copyrights by Costar, Google, Wiggin Properties and independent contractors are used with permission.