

330-332
NORTH ERWIN ST.
CARTERSVILLE, GA
30120

For Sale or Lease
Two Buildings Totaling 8,000 +/- SF

BRANDON HUFT

Vice President
404.942.2009
bhuft@kingindustrial.com

ROBERT GRAHAM

Vice President
404.942.2051
rgraham@kingindustrial.com

KING
*Industrial
Realty, Inc.*

Industrial • Commercial • Investment
404.942.2000 | kingindustrial.com

FOR SALE OR LEASE
TWO BUILDINGS
TOTALING 8,000 +/- SF

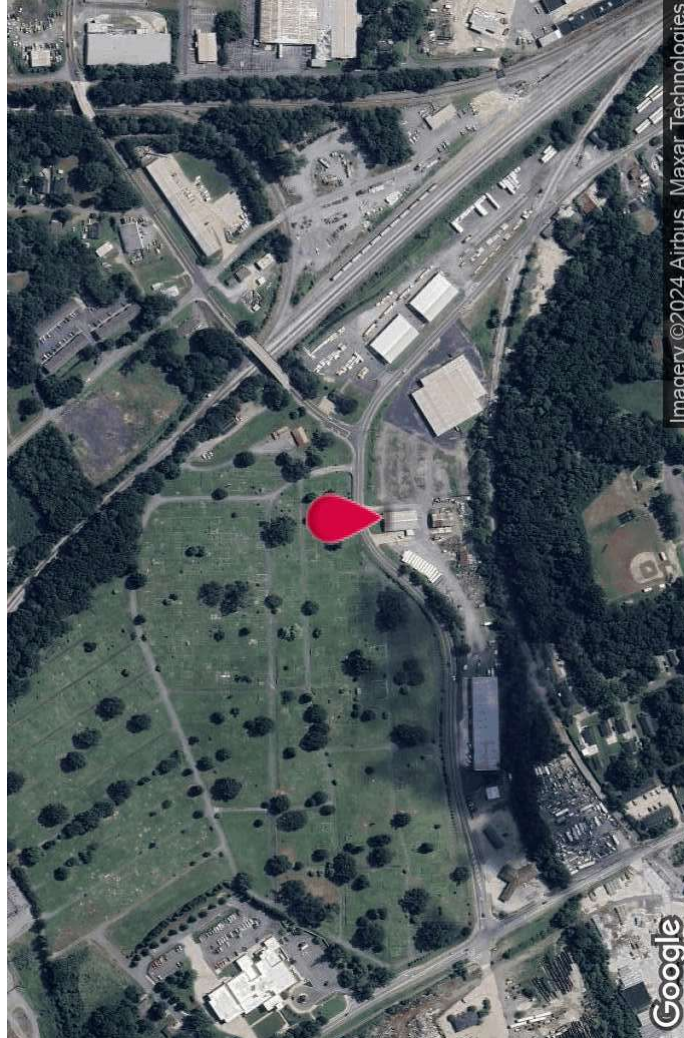


PROPERTY HIGHLIGHTS

- Office / Warehouse (Main Building)
- 5,000 +/- SF
- 1,200 +/- SF Office
- 2 Drive - In Doors
- Storage Shed
- 3,000 +/- SF
- 23' Clear Height at Center
- 2 Oversized Drive - In Doors
- 2 +/- Acres Outside Storage Yard
- Buildings and Outside Storage Yard can be Leased Together or Separately

OFFERING SUMMARY

Lot Size:	3.469 +/- Acres (2 Parcels)
Building Size:	8,000 +/- SF (Two Buildings)
Zoning:	M2



BRANDON HUFT

Vice President
404.942.2009

bhuft@kingindustrial.com

ROBERT GRAHAM

Vice President
404.942.2051

rgraham@kingindustrial.com

Every effort has been made to provide accurate information, but no liability is assumed for errors or omissions.

ADDITIONAL PHOTOS



BRANDON HUFT

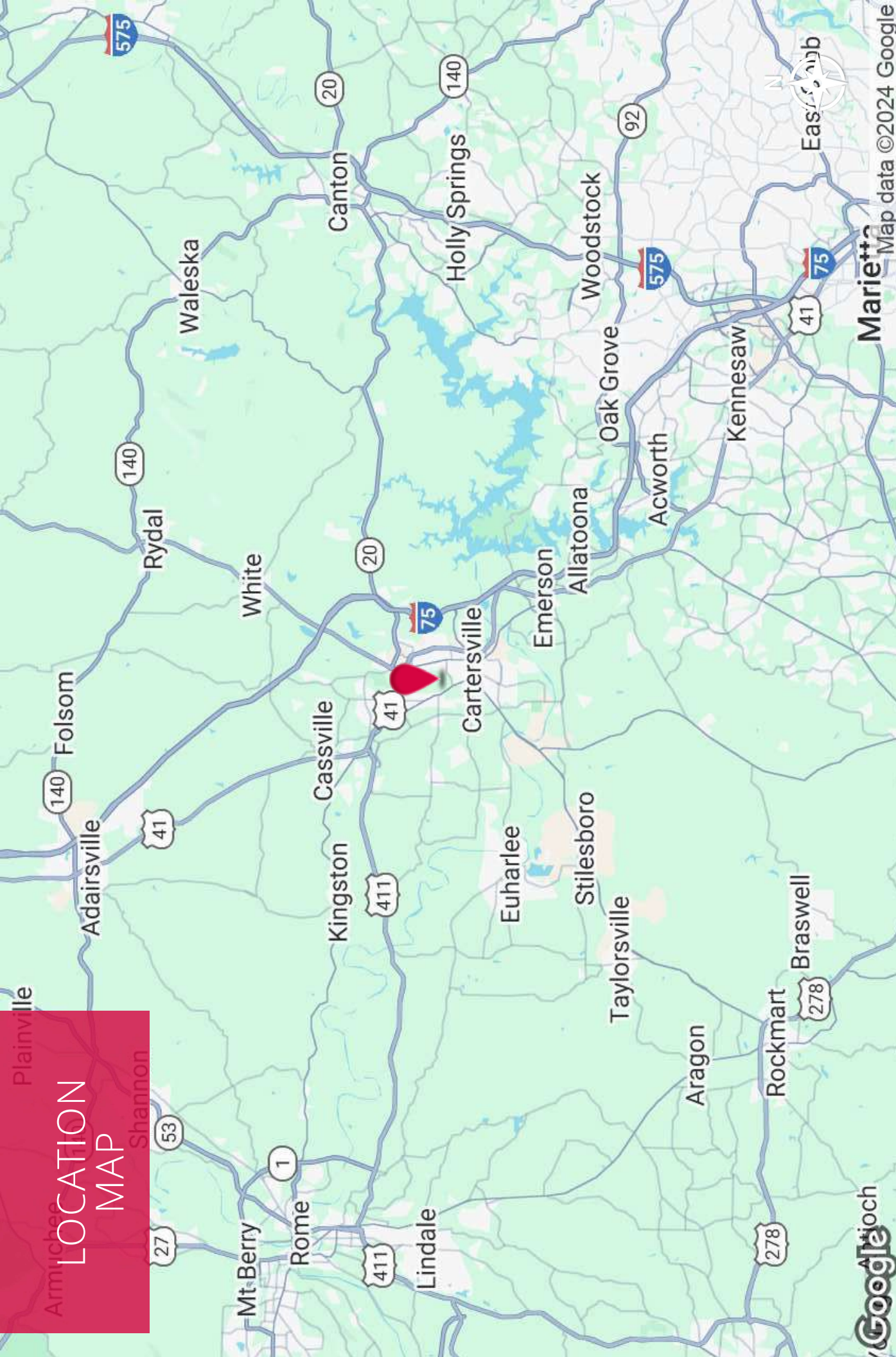
Vice President
404.942.2009
bhuft@kingindustrial.com

ROBERT GRAHAM

Vice President
404.942.2051
rgraham@kingindustrial.com

Every effort has been made to provide accurate information, but no liability is assumed for errors or omissions.

LOCATION
MAP



KING Industrial Realty, Inc. **CORFAC** INTERNATIONAL
Industrial • Commercial • Investment
404.942.2000 | kingindustrial.com

BRANDON HUFT
Vice President
404.942.2009
bhuft@kingindustrial.com

ROBERT GRAHAM
Vice President
404.942.2051
rgraham@kingindustrial.com

Every effort has been made to provide accurate information, but no liability is assumed for errors or omissions.

Map data ©2024 Google



EXCLUSIVELY LISTED BY:

BRANDON HUFT

Vice President

bhuft@kingindustrial.com

404.942.2009

ROBERT GRAHAM

Vice President

rgraham@kingindustrial.com

404.942.2051

KING
*Industrial
Realty, Inc.*

Industrial • Commercial • Investment
404.942.2000 | kingindustrial.com