

630 PLAZA DRIVE

SUITE 150

HIGHLANDS RANCH, CO 80129

16,080 RSF

OFFICE SUBLEASE | AVAILABLE IMMEDIATELY



BUILDING SPECIFICATIONS

HIGHLIGHTS

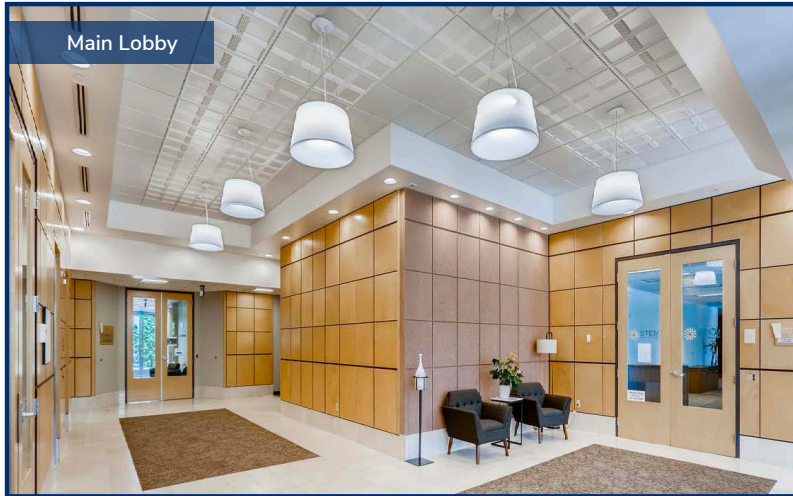
- Ample Parking with EV Charging
- Easy Access to 470 / Lucent Boulevard Interchange
- Walking Distance to Coffee, Restaurants, Hotels and Fitness Concepts
 - Postino, Starbucks, Torchy's Tacos, Snarf's Sandwiches, Prost Brewing Company and more
- Plug and Play
- Updated Fitness Center with Showers and Lockers
- Common Conference Room for Tenant Use
- Unparalleled Class A Finishes Throughout

Building	Highlands Ranch Business Park
Address	630 Plaza Drive Suite 150 Highlands Ranch, CO 80129
Size	16,080 RSF
Asking Rate	\$9.80/FSG
Available	Immediately
Available Through	March 31, 2026

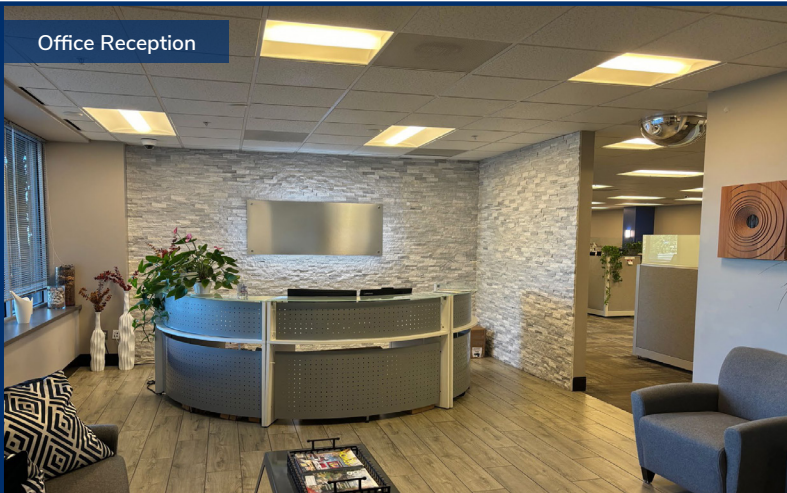
Entry



Main Lobby



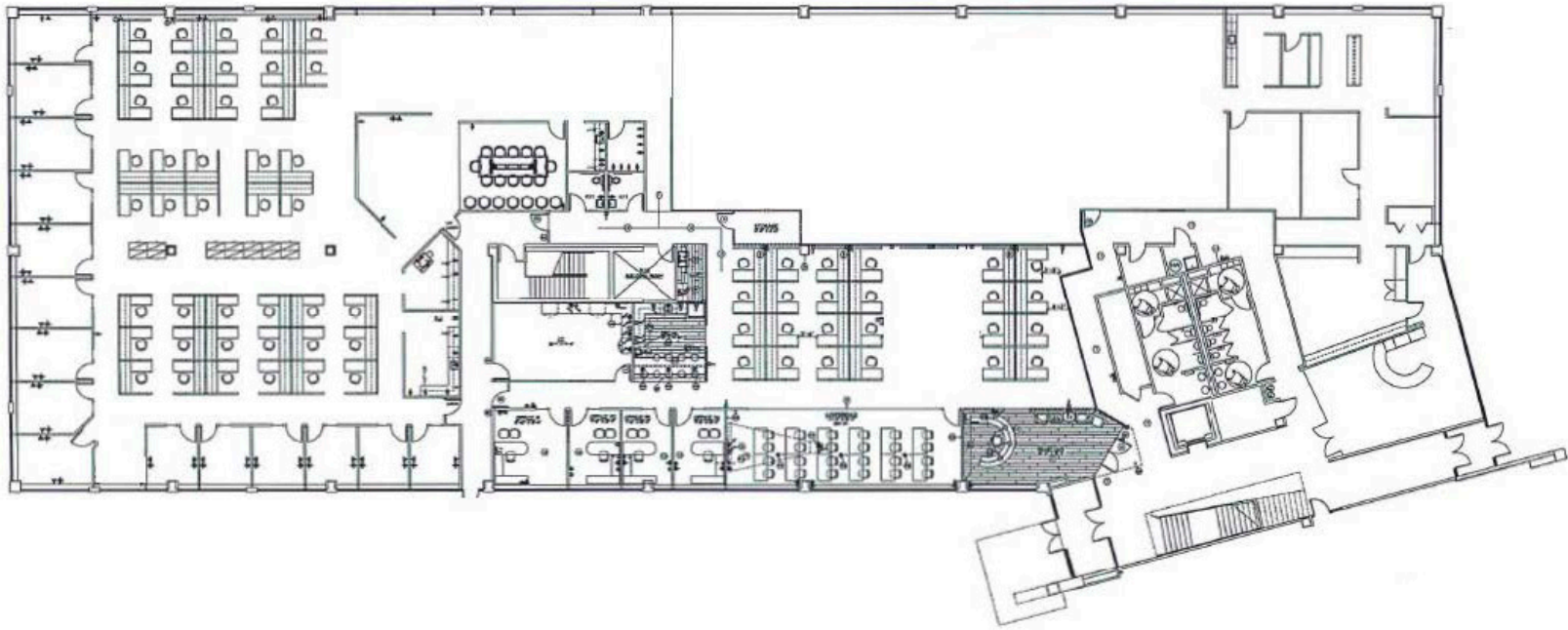
Office Reception



Office Spaces



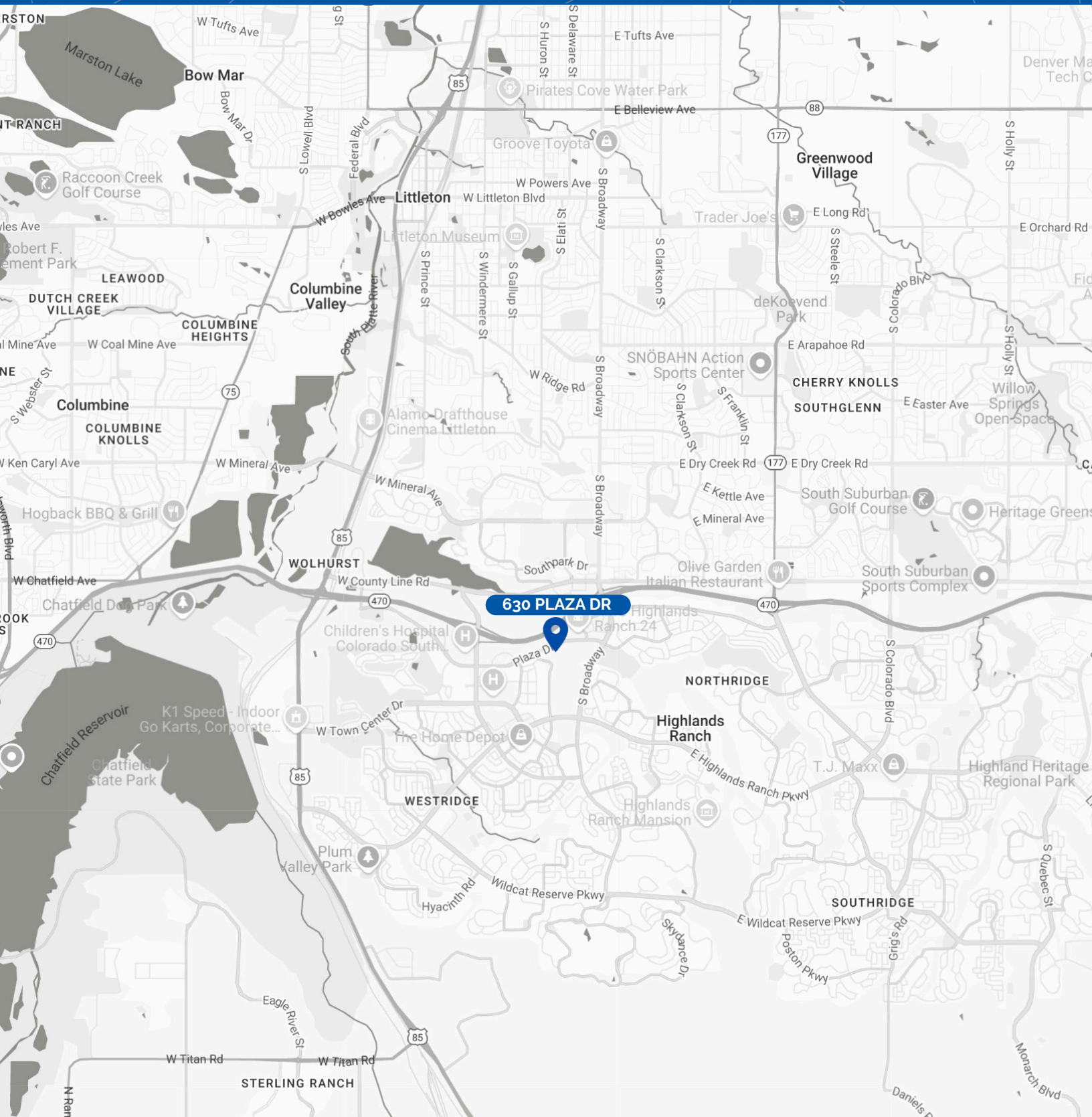
FLOOR PLAN



SPACE FEATURES

- 86 Workstations
- 15 Private Offices
- 3 Meeting Rooms
- Multiple Kitchen Spaces
- In-Suite Private Restrooms
- Building Signage Opportunity

MAP



FOR LEASE INFORMATION:

MARC FELDMAN
marc.feldman@streamrealty.com
303.957.5307

TYLER HERMAN
tyler.herman@streamrealty.com
303.957.5306

