

# MEDICAL & PROFESSIONAL OFFICE CONDO FOR SALE

Suites A, B, C | +/- 6,000 SF

11600 ATLANTIS PLACE. ALPHARETTA, GA 30022



*Suite A*

*Suite B*

*Suite C*



**Connor Cohen**

Brokerage Associate  
W: 404-841-9665 X 113  
M: 678-429-6098  
ccohen@conecommercial.com



**Luke Zabinski**

Vice President - Capital Markets & Leasing  
W: 404-841-9665 X 102  
M: 404-680-7764  
lzabinski@conecommercial.com

Information contained herein may have been provided by the seller, landlord or other outside sources. While deemed reliable, it may be estimated, projected, limited in scope and is subject to change or inaccuracies. Pertinent information should be independently confirmed prior to lease or purchase offer or within an applicable due diligence period.

# PROPERTY DETAILS

**11600 ATLANTIS PLACE. ALPHARETTA, GA 30022**

This listing offers a 4,000 sq. ft. First Floor office space (Suites A, B, C) with a spacious, functional layout and direct ground-level access. The property also includes a 2,000 sq. ft. mostly built-out basement and includes kitchenette and space for storage or additional offices.

With flexible options for use, this property is an excellent choice for businesses seeking versatility.

✔ **Move in Ready & Minimal HOA Fees**

✔ **Ideal for Medical or Professional Office Use**

- 2 offices with sinks for medical use & ability to add plumbing to 3 more offices

✔ **Separate Entrance to Downstairs Space**

- Includes kitchenette and full shower

✔ **Large Reception Area & Lobby, Ample Storage/Filing Spaces**

## Offering Summary

Total Square Feet **4,000 +/- SF First Level**  
**2,000 +/- SF Basement**

Suites A, B, C **First Floor Plus Basement**

Price **Inquire for Pricing**

## Nearby Infrastructure

Avalon **6 minutes, 1.8 miles**

GA-400 **5 minutes, 1.1 miles**

Northside Medical Campus **7 minutes, 2.3 miles**

Wellstar North Medical Center **14 minutes, 3.9 miles**



**Cone Commercial Real Estate**  
2964 Hardman Ct NE,  
Atlanta, GA 30305  
(404) 841-9665  
info@conecommercial.com

### Connor Cohen

Brokerage Associate

W: 404-841-9665 X 113

M: 678-429-6098

ccohen@conecommercial.com

### Luke Zabinski

Vice President- Capital Markets & Leasing

W: 404-841-9665 X 102

M: 404-680-7764

lzabinski@conecommercial.com

# PROPERTY PHOTOS

11600 ATLANTIS PLACE. ALPHARETTA, GA 30022



**Cone Commercial Real Estate**  
2964 Hardman Ct NE,  
Atlanta, GA 30305  
(404) 841-9665  
info@conecommercial.com

**Connor Cohen**  
Brokerage Associate  
W: 404-841-9665 X 113  
M: 678-429-6098  
ccohen@conecommercial.com

**Luke Zabinski**  
Vice President- Capital Markets & Leasing  
W: 404-841-9665 X 102  
M: 404-680-7764  
lzabinski@conecommercial.com

Information contained herein may have been provided by the seller, landlord or other outside sources. While deemed reliable, it may be estimated, projected, limited in scope and is subject to change or inaccuracies. Pertinent information should be independently confirmed prior to lease or purchase offer or within an applicable due diligence period.



**Cone Commercial Real Estate**  
2964 Hardman Ct NE,  
Atlanta, GA 30305  
(404) 841-9665  
info@conecommercial.com

**Connor Cohen**  
Brokerage Associate  
W: 404-841-9665 X 113  
M: 678-429-6098  
ccohen@conecommercial.com

**Luke Zabinski**  
Vice President- Capital Markets & Leasing  
W: 404-841-9665 X 102  
M: 404-680-7764  
lzabinski@conecommercial.com

Information contained herein may have been provided by the seller, landlord or other outside sources. While deemed reliable, it may be estimated, projected, limited in scope and is subject to change or inaccuracies. Pertinent information should be independently confirmed prior to lease or purchase offer or within an applicable due diligence period.

# FLOOR PLANS

11600 ATLANTIS PLACE. ALPHARETTA, GA 30022



**Cone Commercial Real Estate**  
2964 Hardman Ct NE,  
Atlanta, GA 30305  
(404) 841-9665  
info@conecommercial.com

**Connor Cohen**

Brokerage Associate

W: 404-841-9665 X 113

M: 678-429-6098

ccohen@conecommercial.com

**Luke Zabinski**

Vice President- Capital Markets & Leasing

W: 404-841-9665 X 102

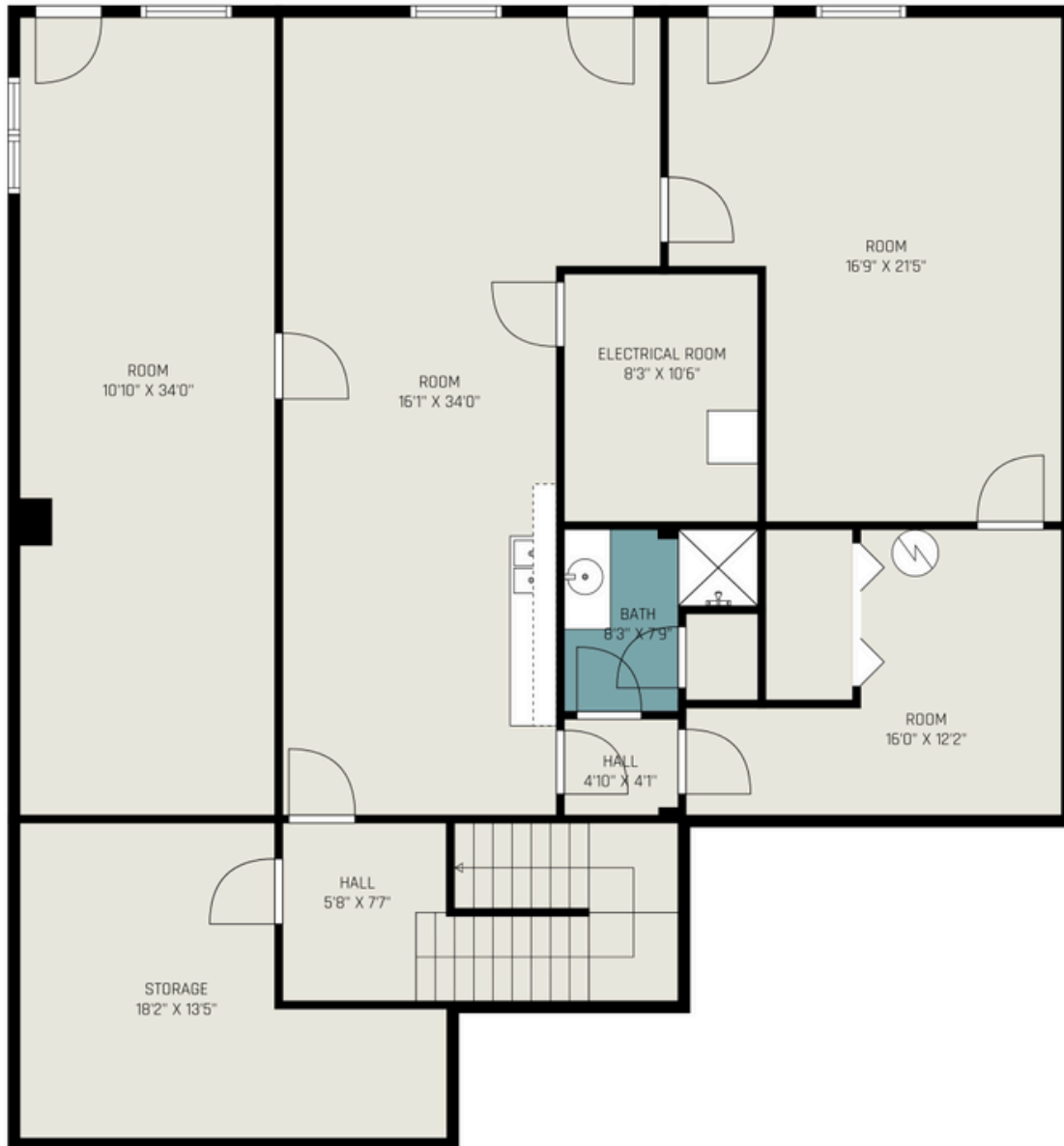
M: 404-680-7764

lzabinski@conecommercial.com

Information contained herein may have been provided by the seller, landlord or other outside sources. While deemed reliable, it may be estimated, projected, limited in scope and is subject to change or inaccuracies. Pertinent information should be independently confirmed prior to lease or purchase offer or within an applicable due diligence period.

# FLOOR PLANS

11600 ATLANTIS PLACE. ALPHARETTA, GA 30022



**Cone Commercial Real Estate**  
2964 Hardman Ct NE,  
Atlanta, GA 30305  
(404) 841-9665  
info@conecommercial.com

**Connor Cohen**  
Brokerage Associate  
W: 404-841-9665 X 113  
M: 678-429-6098  
ccohen@conecommercial.com

**Luke Zabinski**  
Vice President- Capital Markets & Leasing  
W: 404-841-9665 X 102  
M: 404-680-7764  
lzabinski@conecommercial.com

# AREA MAP

11600 ATLANTIS PLACE. ALPHARETTA, GA 30022



**Cone Commercial Real Estate**  
2964 Hardman Ct NE,  
Atlanta, GA 30305  
(404) 841-9665  
info@conecommercial.com

**Connor Cohen**  
Brokerage Associate  
W: 404-841-9665 X 113  
M: 678-429-6098  
ccohen@conecommercial.com

**Luke Zabinski**  
Vice President- Capital Markets & Leasing  
W: 404-841-9665 X 102  
M: 404-680-7764  
lzabinski@conecommercial.com