

DENALI

— LOGISTICS PARK —

BUILDING 1
6650 N. DENALI ST.

248,692 SF
AVAILABLE

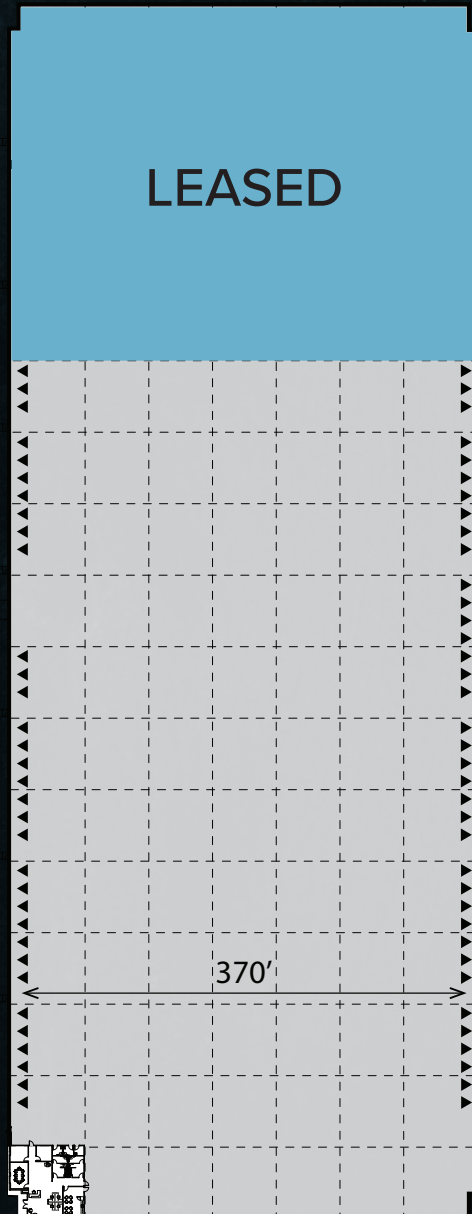
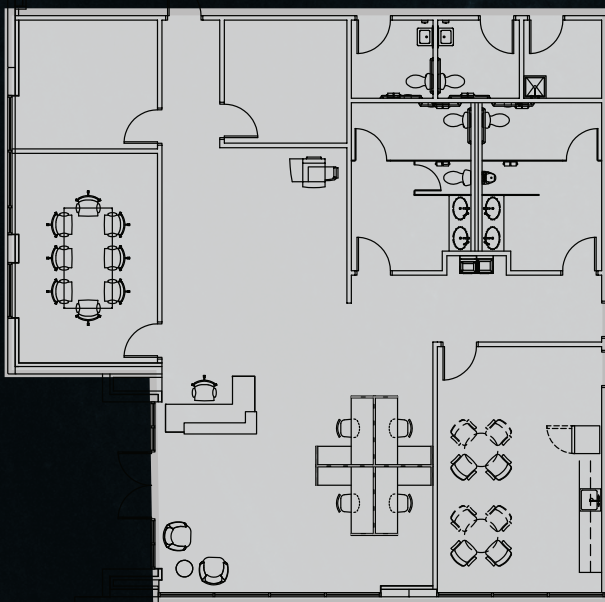


DIVISIBLE TO 62,428 SF | 2,377 SPEC SUITE

BUILDING DETAILS

Building Size:	248,692 SF
Divisible:	62,428 SF
Dock Doors:	68
Drive in Doors:	2
Existing Auto Spaces:	129
Existing Trailer Spaces:	46
Clear Height:	40'
Building Depth:	370'
Column Spacing:	56' x 50'
Power:	3,400 amps

SPEC SUITE | 2,377 SF



EXCEED YOUR GOALS AT DENVER'S SUMMIT



HIGHLIGHTS

- ADDITIONAL TRAILER / AUTO PARKING AVAILABLE
- ZONING ALLOWS FOR WIDE RANGE OF INDUSTRIAL USES
- FENCED/SECURED STORAGE PERMITTED
- ONE OF THE ONLY 40' CLEAR CROSSDOCK CONFIGURATIONS IN THE MARKET



STATE OF THE ART NEW
CONSTRUCTION



3 BUILDINGS TOTALING
759,620 SF ON 216 ACRES



BTS SITES AVAILABLE UP
TO 1,209,000 SF



AIRPORT DISTRICT
ZONING ([MORE INFO](#))

Colliers

T.J. Smith, SIOR
+1 303 283 4576
tj.smith@colliers.com

Nick Rice
+1 720 833 4620
nick.rice@colliers.com

Riggs Winz
+1 303 283 4571
riggs.winz@colliers.com



Hines



[CLICK TO VIEW WEBSITE](#)

This communication has been prepared by Colliers Denver for advertising and/or general information only. Colliers Denver makes no guarantees, representations or warranties of any kind, expressed or implied, regarding the information including, but not limited to, warranties of content, accuracy and reliability. Any interested party should undertake their own inquiries as to the accuracy of the information. Colliers Denver excludes unequivocally all inferred or implied terms, conditions and warranties arising out of this document and excludes all liability for loss and damages arising there from. This publication is the copyrighted property of Colliers Denver and/or its licensor(s). © 2024. All rights reserved. This communication is not intended to cause or induce breach of an existing listing agreement.