

FOR LEASE



FOR LEASE

WAKEMED MEDICAL PARK OF CARY

210 Ashville Ave Cary, NC 27518



CAPITAL ASSOCIATES®

WAKEMED MEDICAL PARK OF CARY

210 Ashville Ave Cary, NC 27518

PROPERTY TYPE	Medical Office
BUILDING SIZE	125,000 SF
LEASING RATE	\$29.00/SF
TICAM	\$9.45/SF
LEASE TYPE	NNN
YEAR BUILT	2020
COUNTY	Wake
LOCATION	Cary, NC
FLOORS	5
PARKING	4.63/1,000 SF



BRET MULLER
bmuller@capitalassociates.com
919.523.4200

WES JOHNSON
wjohnson@capitalassociates.com
919.422.4853



**CAPITAL
ASSOCIATES.**

WAKEMED MEDICAL PARK OF CARY

210 Ashville Ave Cary, NC 27518

CAMPUS HIGHLIGHTS

- WakeMed Cary Hospital is the only full service hospital in Cary, NC and is a Level III Trauma Center
- **HOSPITAL SERVICES INCLUDE:** Advanced Gastrointestinal Center, Critical Care & Emergency Department, Endoscopy, Heart & Vascular, Imaging, Laboratory, Nutrition, Neurodiagnostics/Sleep Center, Pregnancy & Childbirth, Rehabilitation, Surgical, Transfusion & Pain Management, and Weight Loss Services.
- Hospital has nine operating rooms, two minor procedure rooms, and cystoscopy and endoscopy suites
- Campus includes a Primary Stroke Center and a Nationally Accredited Chest Pain Center
- Image services on campus have been designated a Diagnostic Imaging Center of Excellence by the American College of Radiology

AREA AMENITIES

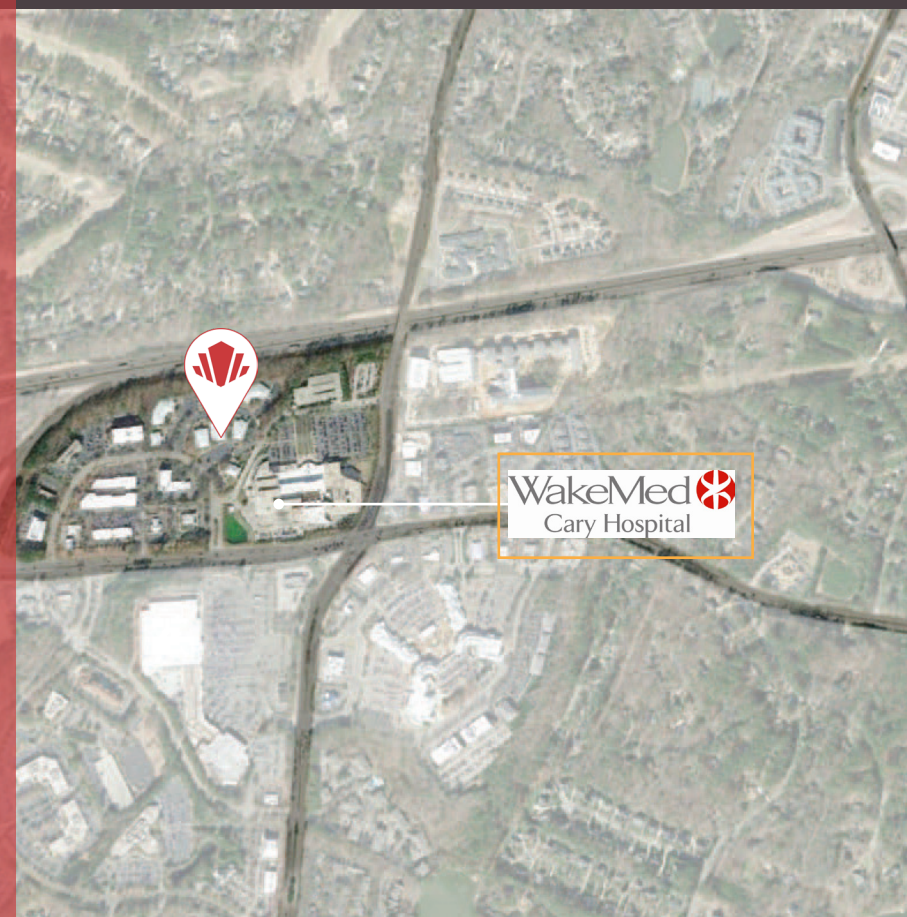
- WakeMed Medical Park of Cary is in the heart of the Triangle area of North Carolina, between Raleigh and the renowned Research Triangle Park which is among the top regions in the country to live and work
- Several international businesses have headquarters in Cary including Caterpillar, MetLife and SAS Institute Inc., the largest privately held software developer in the world

BRET MULLER

bmuller@capitalassociates.com
919.523.4200

WES JOHNSON

wjohnson@capitalassociates.com
919.422.4853





LOBBY

Modern Inviting Entry with Ample Seating Areas

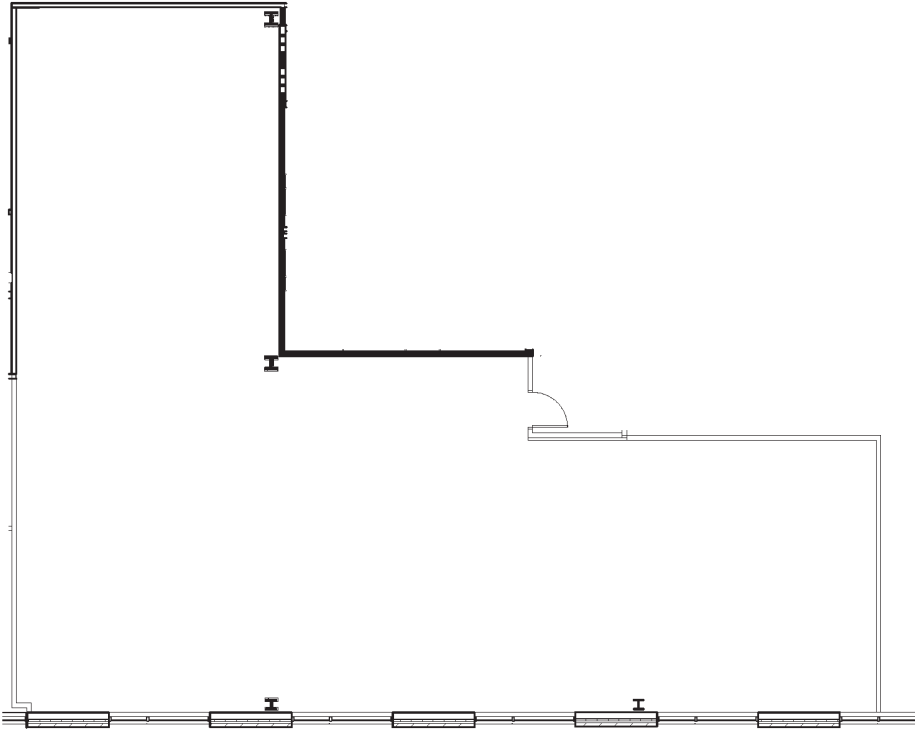
WAKEMED MEDICAL PARK OF CARY

210 Ashville Ave Cary, NC 27518

AVAILABLE

4TH FLOOR

3,157 SF



BRET MULLER
bmuller@capitalassociates.com
919.523.4200

WES JOHNSON
wjohnson@capitalassociates.com
919.422.4853

